

La Bonanova, Palma de Mallorca

REF. VPM2403043



Flat for sale in Palma

Features

- ✓ Views
- ✓ AACC
- ✓ Backyard
- ✓ Has parking
- ✓ Heating
- ✓ Terrace
- ✓ Lift

Price

749,500 €

Surface

130 m²

Bedrooms

3

Bathrooms

2



Located in the sought after residential area of La Bonanova, only a few minutes away from the shopping centre "Porto Pi", the promenade, the Club de Mar, this exterior flat of approx.

120 sqm east facing, with spectacular views to the Bay, the Cathedral and only a few minutes away from the centre of Palma, close to the best national and international schools. Surrounded by nature it has a communal area with large open spaces. The property has been completely reformed with quality elements ideal for those who want to enjoy a quiet place, but with the comfort of living with all the services of the city. The large garden terrace of 60sqm that surrounds the

house provides a haven of peace, this ground floor stands out for its luminosity and its beautiful sea views.

The entrance leads to the spacious living-dining room, with open plan kitchen, all with spectacular views where you can enjoy quiet evenings. The sleeping area consists of three exterior double bedrooms with access to the terrace, one of them en suite and the other two bedrooms share a bathroom. The equipment includes air conditioning and heating by SPLIT in all the rooms, stoneware floors, interior and exterior aluminium carpentry with double glazing Climalit,...

Contact us,
we will be happy to assist you,
to offer you more details and information.

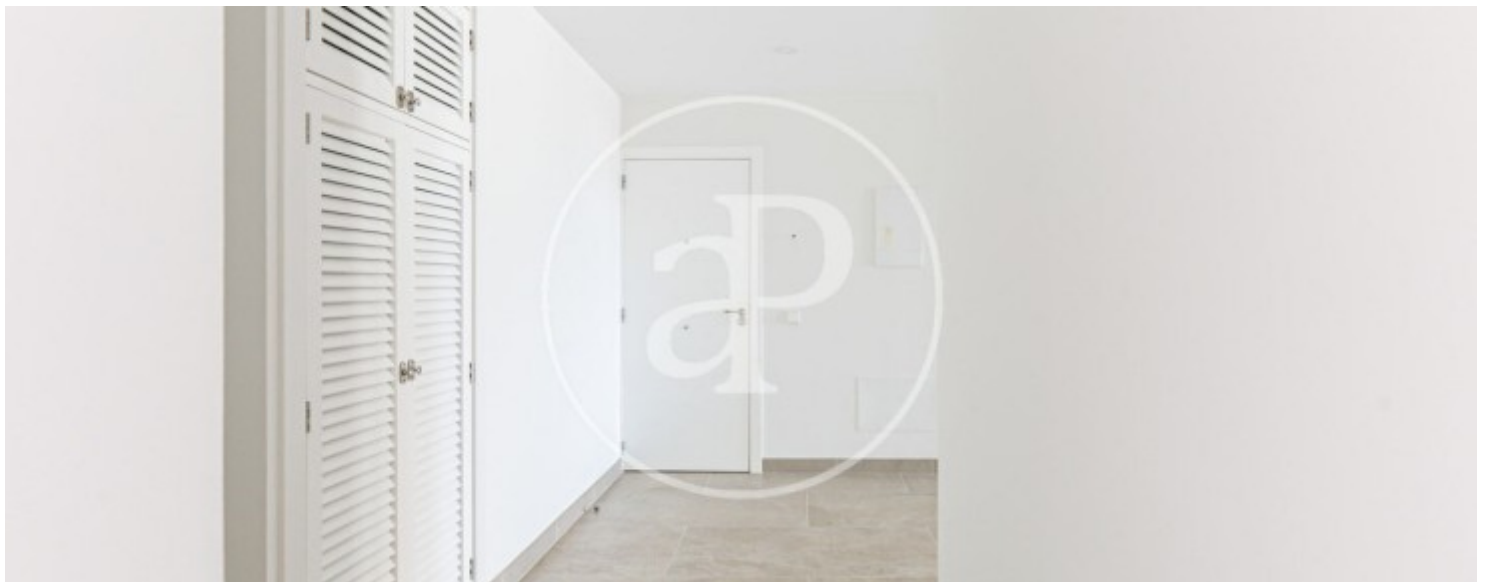
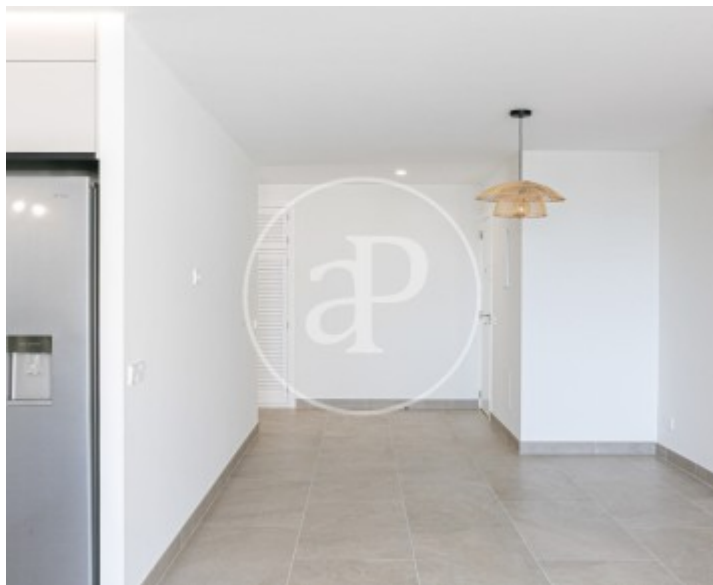
La Bonanova, Palma de Mallorca

REF. VPM2403043



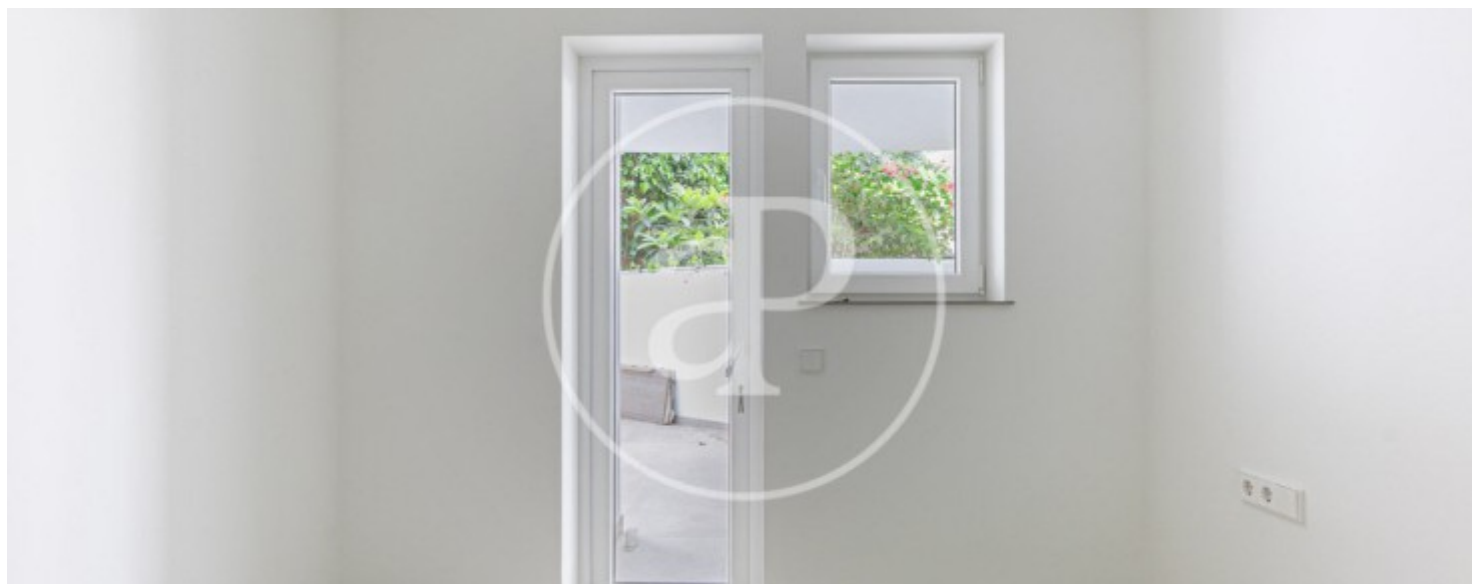
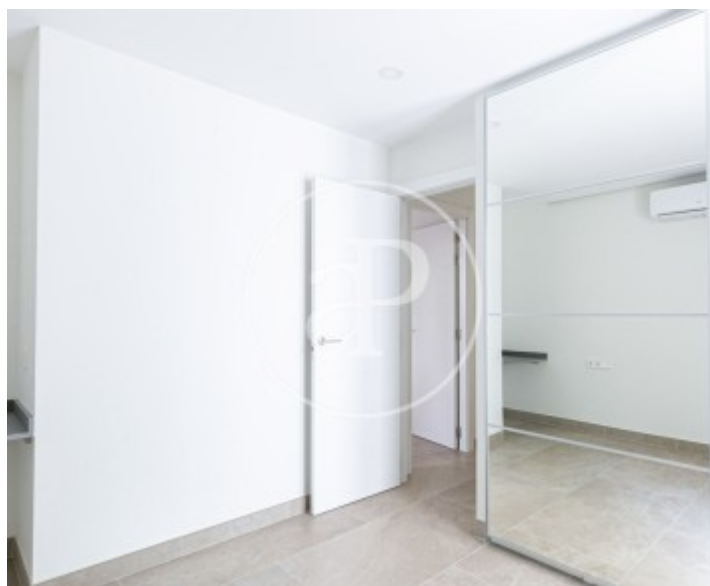
La Bonanova, Palma de Mallorca

REF. VPM2403043



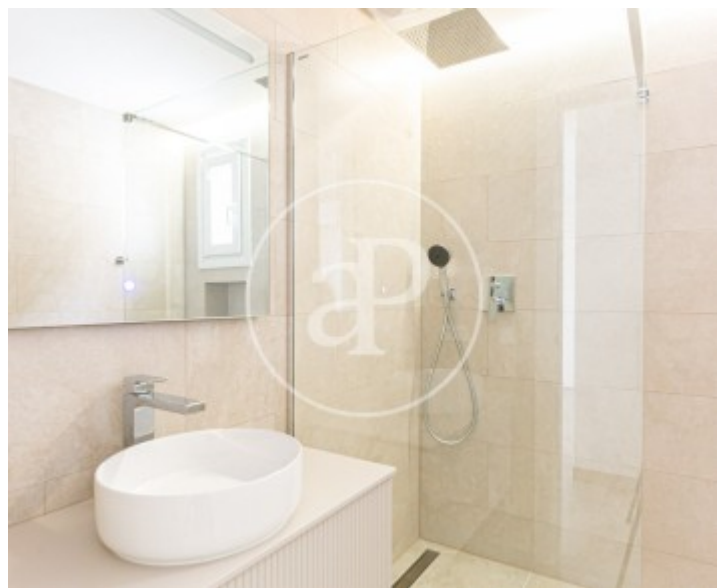
La Bonanova, Palma de Mallorca

REF. VPM2403043



La Bonanova, Palma de Mallorca

REF. VPM2403043



The information about any property is not binding to any offer or contract. Any verbal or written declaration made by aProperties with regards to the value or condition of the property should not be considered accurate or factual. The pictures make reference to some parts of the property at the times that they were taken. The areas, dimensions and distances that are given are approximate and should be checked by the client. The images are computer generated and are just an approximate indication of the real appearance of the property; these may change at any time. The information with regards to the property may also change at any time.



For **more information** or
to make an appointment

apropertiespalma@aproperties.es
Tel: 871 16 01 60
www.aproperties.es