

La Bonanova, Palma de Mallorca

REF. APMS2605009

Penthouse for rent in La Bonanova

Features

- ✓ Views
- ✓ Furnished
- ✓ Terrace
- ✓ Pool
- ✓ Has parking
- ✓ Heating
- ✓ AACC
- ✓ Backyard
- ✓ Lift

Price
2,500 €

Surface

90 m²

Bedrooms

2

Bathrooms

2



Located in the upper part of La Bonanova, this beautiful duplex penthouse offers access to a ?????? chill-out area and magnificent views of Bellver Castle. It is part

of a modern residential building with high-quality finishes, featuring a lift, gardens and two large communal swimming pools. On the second floor, this 118 m² duplex penthouse features a spacious and bright living-dining room with access to a terrace offering stunning views of the castle and Bellver forest, alongside a fully equipped independent kitchen with high-end appliances and a separate laundry area. The night area includes two exterior bedrooms with built-in wardrobes, one with an en-suite

bathroom and the other with direct access to the terrace, where only the sound of birds from the pine forest can be heard. A second bathroom with a bathtub completes this level. From the terrace, you access the upper floor, where a rooftop solarium of approximately 80 m² awaits, complete with a private pool, chill-out area, barbecue and sauna, offering spectacular views of the mountains and the iconic Bellver Castle, perfect for enjoying the cool summer evenings. The property features marble and parquet flooring, solid oak interior carpentry, white aluminium exterior carpentry with...

Contact us,
we will be happy to assist you,
to offer you more details and information.

La Bonanova, Palma de Mallorca

REF. APMS2605009



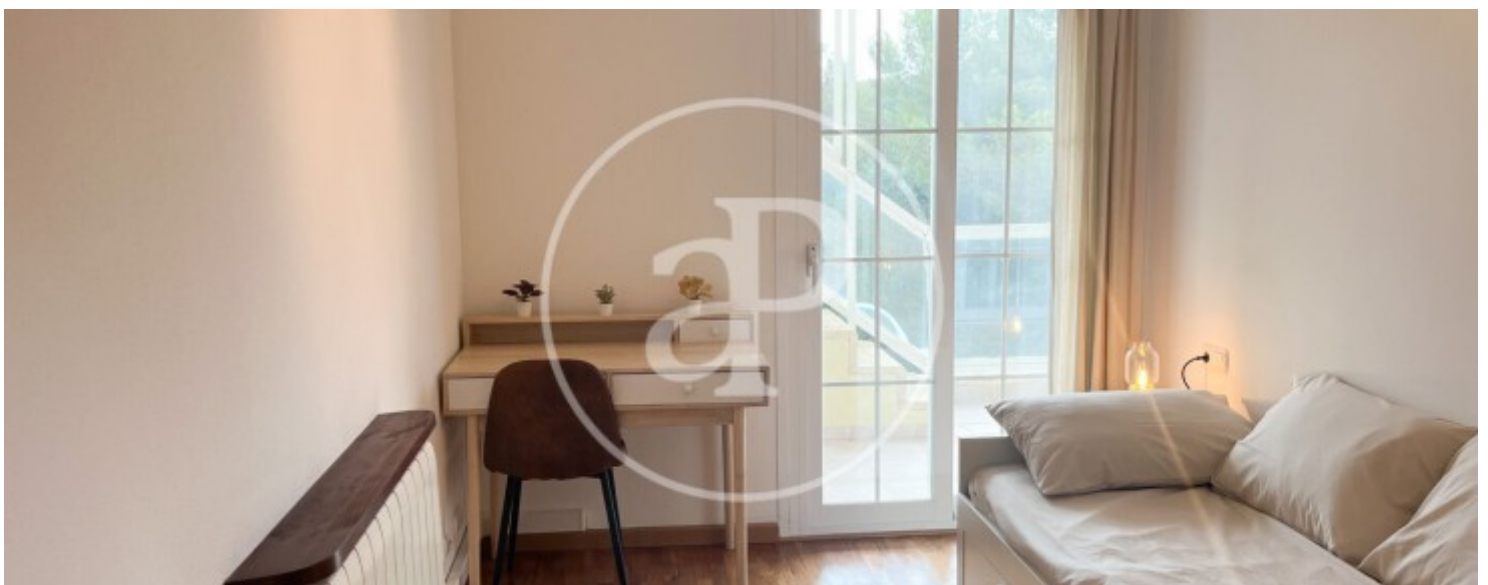
La Bonanova, Palma de Mallorca

REF. APMS2605009



La Bonanova, Palma de Mallorca

REF. APMS2605009



La Bonanova, Palma de Mallorca

REF. APMS2605009



The information about any property is not binding to any offer or contract. Any verbal or written declaration made by aProperties with regards to the value or condition of the property should not be considered accurate or factual. The pictures make reference to some parts of the property at the times that they were taken. The areas, dimensions and distances that are given are approximate and should be checked by the client. The images are computer generated and are just an approximate indication of the real appearance of the property; these may change at any time. The information with regards to the property may also change at any time.

For **more information** or
to make an appointment

apropertiespalma@aproperties.es
Tel: 871 16 01 60
www.aproperties.es