



La Bonanova, Palma de Mallorca

REF. APM2509006

Semi-detached house for rent in La Bonanova

Features

- ✓ Views
- ✓ Furnished
- ✓ Terrace
- ✓ Pool
- ✓ Heating
- ✓ AACC
- ✓ Backyard

Surface

226 m²

Bedrooms

5

Bathrooms

4



Price

4,500 €

In the sought after residential area of La Bonanova, we find this semi-detached house of 220 sqm constructed area and 120 sqm of terrace with a private salt water swimming pool.

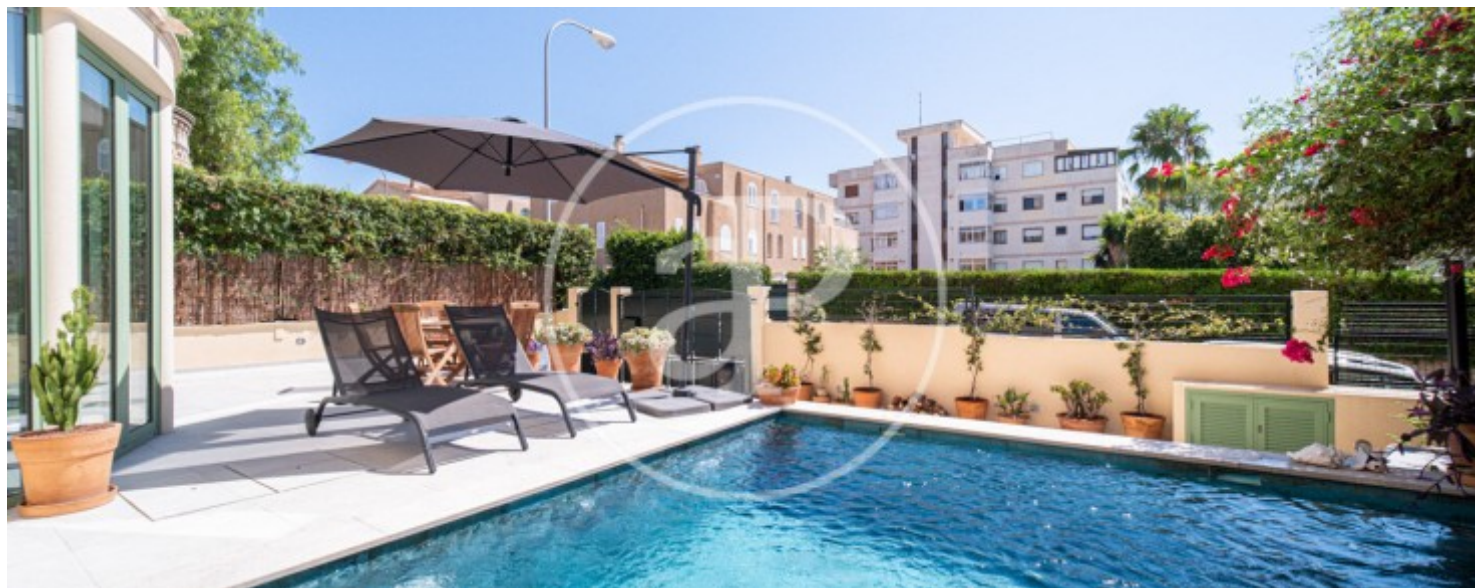
The property is completely renovated with high quality materials and was refurbished in 2021. It has a spacious and bright living-dining room with large windows leading to the terrace, which has a cosy porch and a salt water swimming pool. The kitchen, open to the living room, is fully fitted and equipped, with an industrial style gas cooker and a 90 cm oven. It has a separate laundry area with washing machine, tumble dryer and a water softener. On the same floor there is a guest

toilet and a light patio. Through some stairs we access to the first floor and night area where we find three double bedrooms and two bathrooms. The master bedroom has an en suite bathroom with shower, fitted wardrobes and a dressing room for greater comfort and organisation. On the first floor, we find a bathroom and two double bedrooms with fitted wardrobes. One of the bedrooms has two high single beds with two study areas and a workout space with unbeatable views of the sea. The second bedroom is ideal for use as a play area. It gives access to the roof terrace where you can...

Contact us,
we will be happy to assist you,
to offer you more details and information.

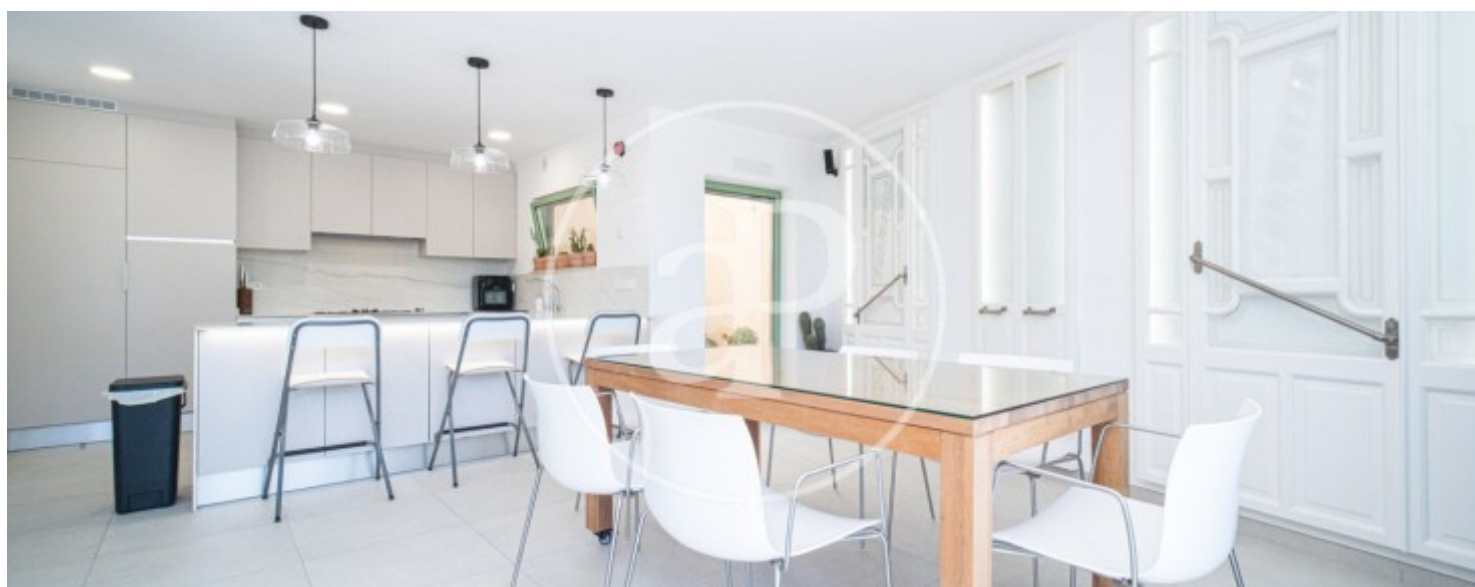
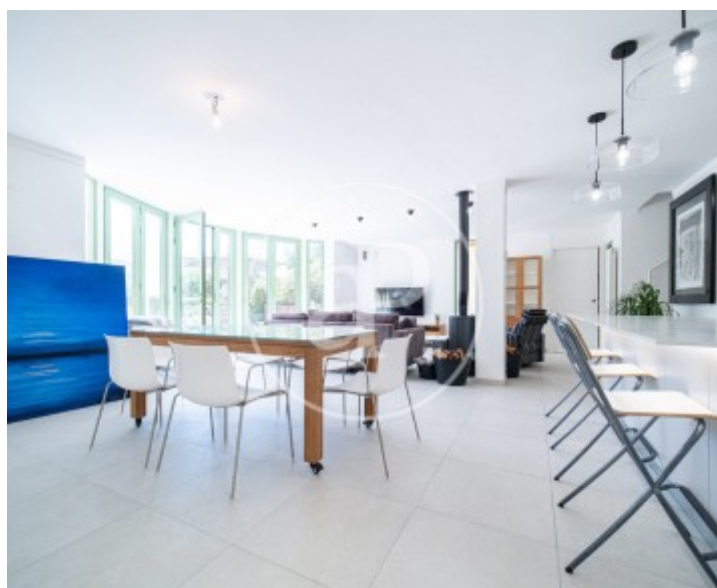
La Bonanova, Palma de Mallorca

REF. APM2509006



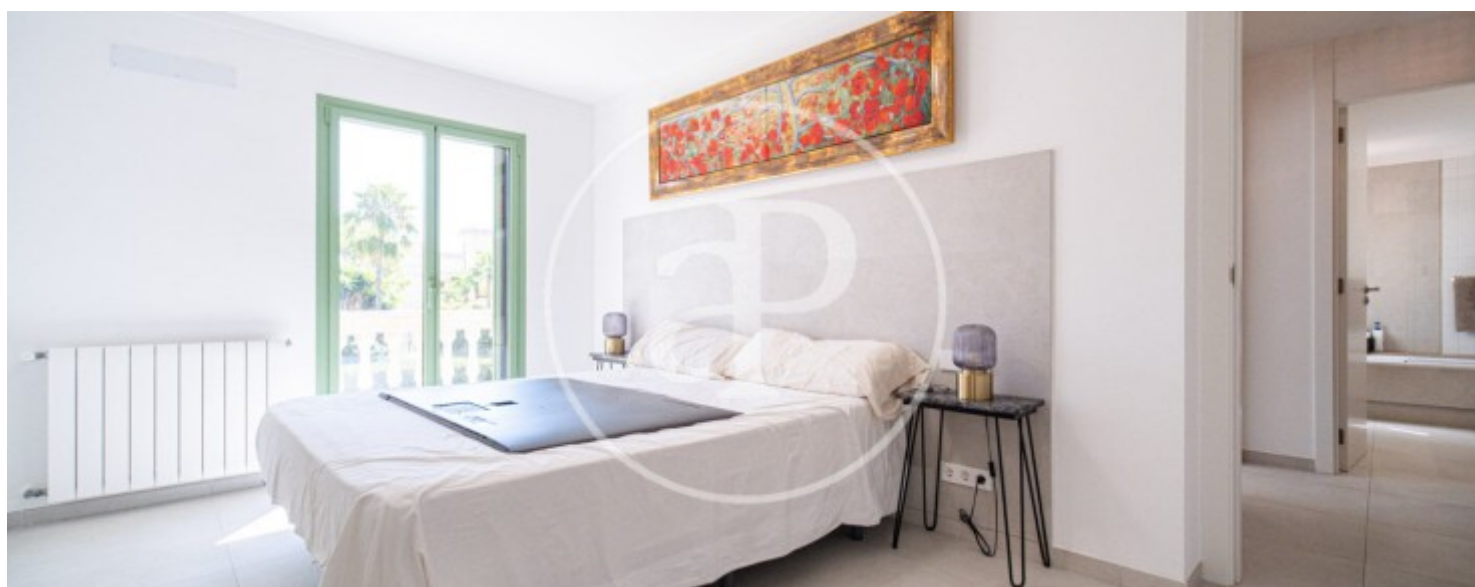
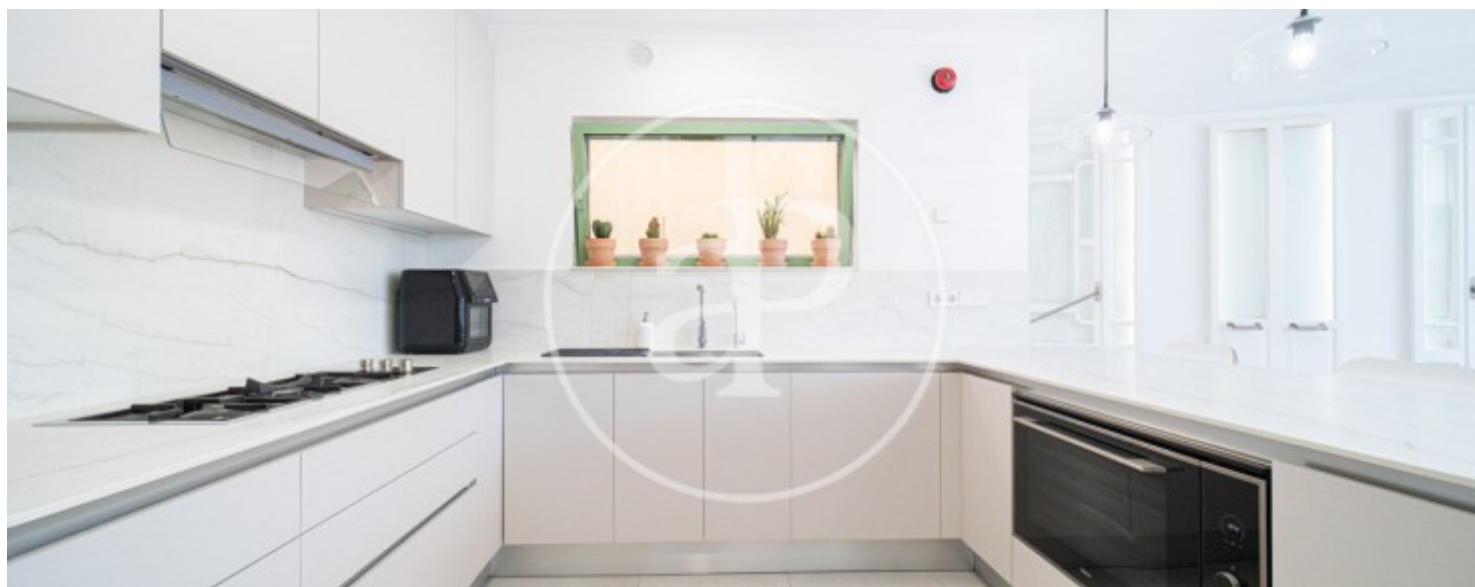
La Bonanova, Palma de Mallorca

REF. APM2509006



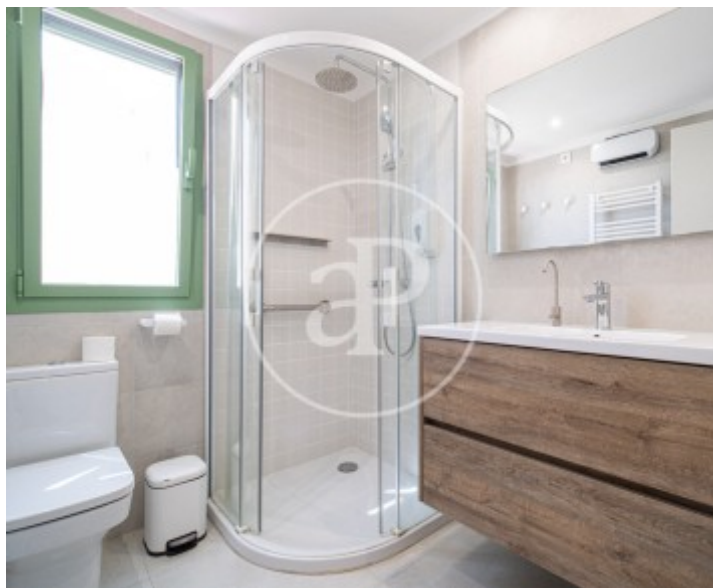
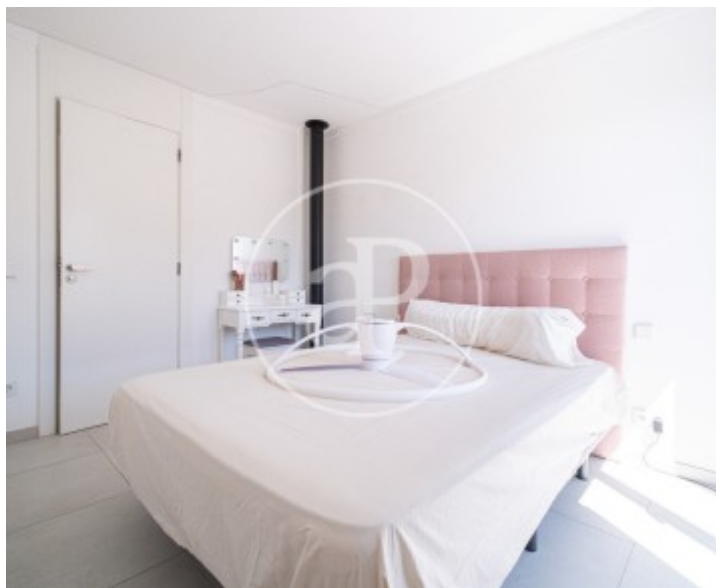
La Bonanova, Palma de Mallorca

REF. APM2509006



La Bonanova, Palma de Mallorca

REF. APM2509006



The information about any property is not binding to any offer or contract. Any verbal or written declaration made by aProperties with regards to the value or condition of the property should not be considered accurate or factual. The pictures make reference to some parts of the property at the times that they were taken. The areas, dimensions and distances that are given are approximate and should be checked by the client. The images are computer generated and are just an approximate indication of the real appearance of the property; these may change at any time. The information with regards to the property may also change at any time.

For **more information** or
to make an appointment

apropertiespalma@aproperties.es
Tel: 871 16 01 60
www.aproperties.es