

La Bonanova, Palma de Mallorca

REF. VPM2305025

Apartment for sale with panoramic views area La Bonanova

Features

- ✓ Views
- ✓ Boxroom
- ✓ Terrace
- ✓ Has parking
- ✓ Heating
- ✓ AACC
- ✓ Lift

Surface

200 m²

Bedrooms

3

Bathrooms

2



Price

1,250,000 €

This penthouse located in the prestigious area of Bonanova with lots of natural light and beautiful sea views from the terrace.

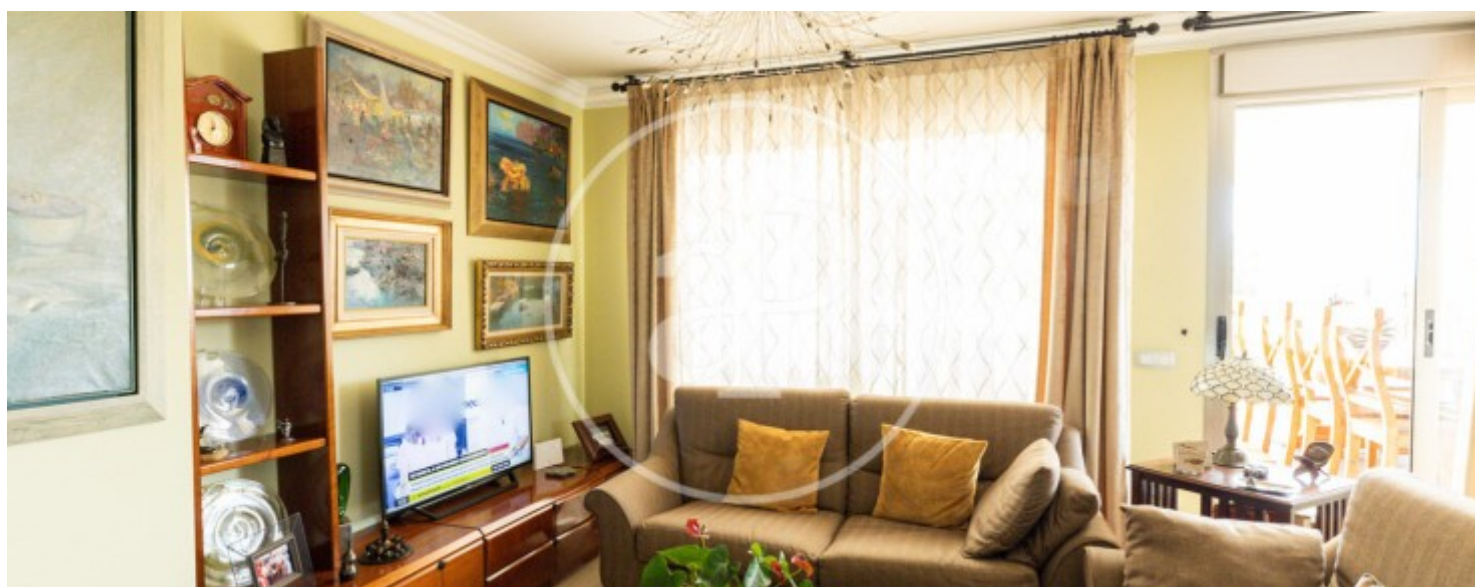
The total constructed area is 146sqm, including 127sqm of floor space and a terrace of 60sqm on the same floor, plus an additional terrace of 80sqm on the upper level. The flat comprises a spacious 12sqm fitted kitchen with utility room, a living/dining room with access to a large terrace and three bedrooms with fitted wardrobes. Two of the bedrooms have direct access to the terrace, which offers stunning views of the surrounding area. There are two bathrooms, one of them en suite. The property also includes a community

pool, two parking spaces and a storage room of about 20 sqm. Other features include air conditioning (hot and cold), armoured door, double glazed windows, central heating, marble floors. Bonanova is a quiet neighbourhood of Palma de Majorca with all services within walking distance, only 3.5 km from the city centre and less than 1.9 km from the beaches of Cala Mayor/San Agustín.

Contact us,
we will be happy to assist you,
to offer you more details and information.

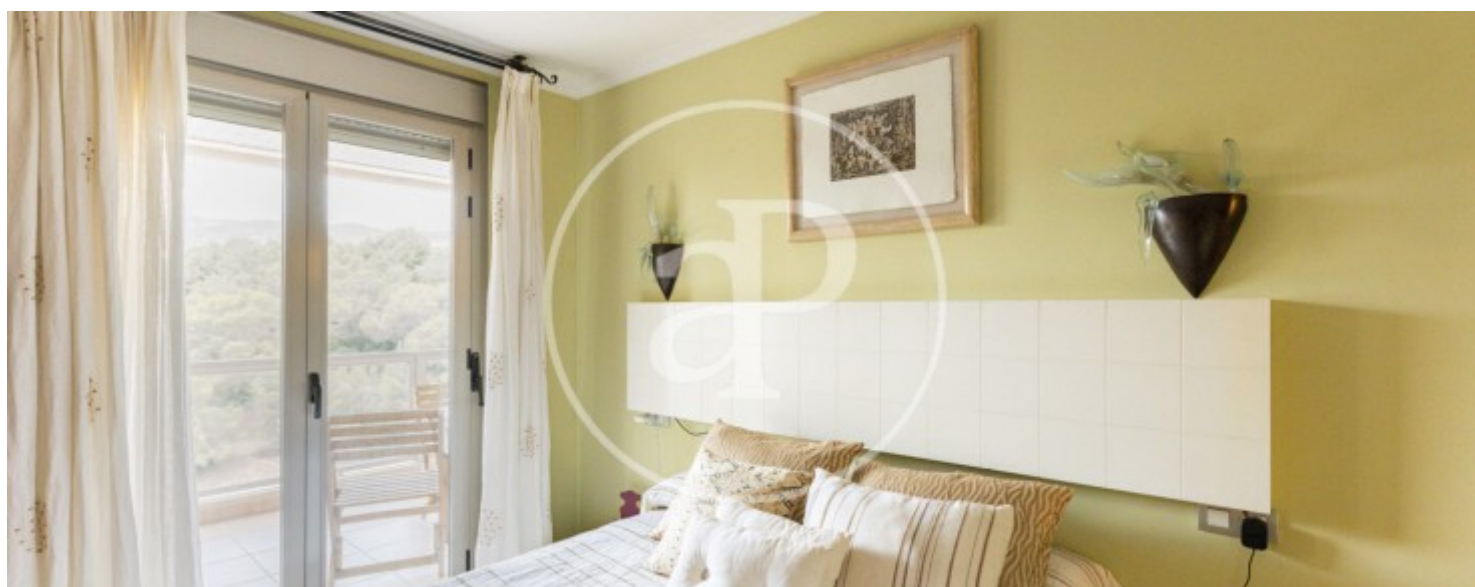
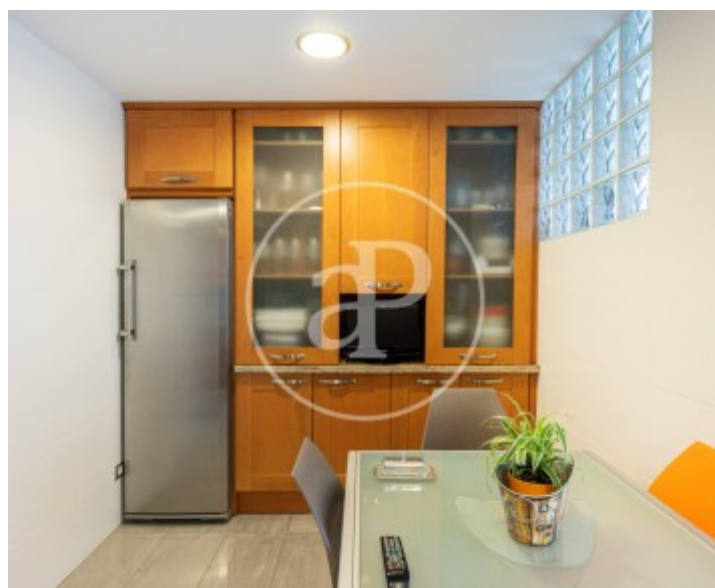
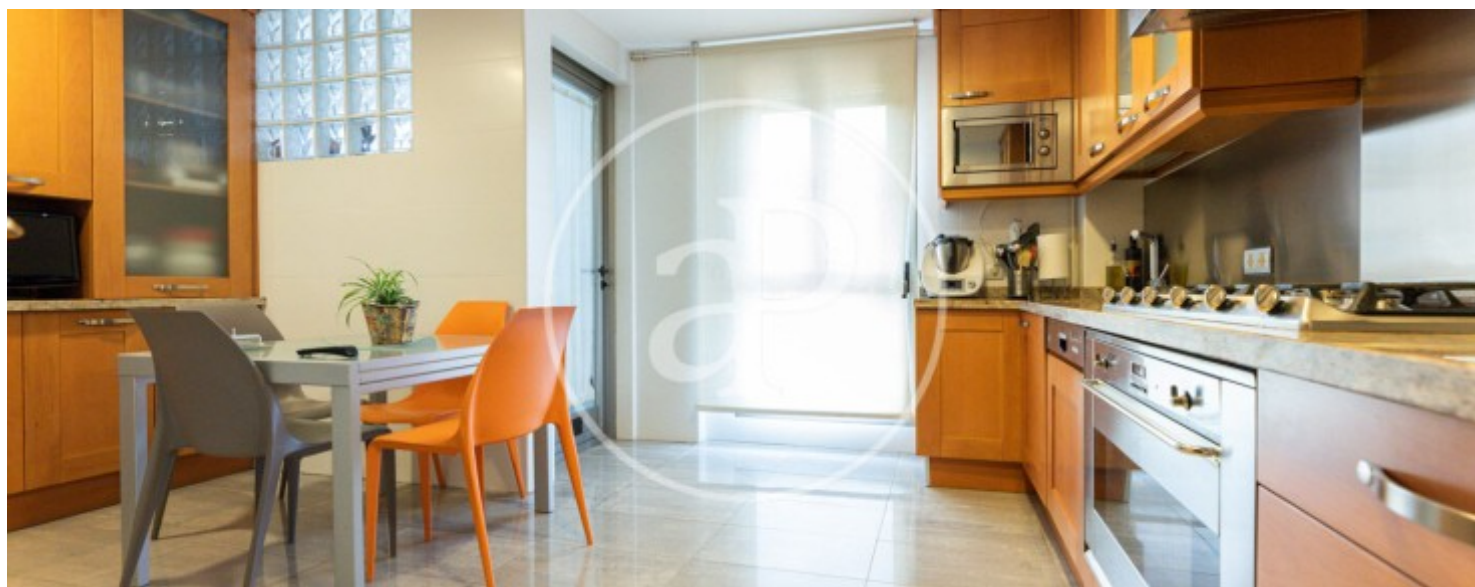
La Bonanova, Palma de Mallorca

REF. VPM2305025



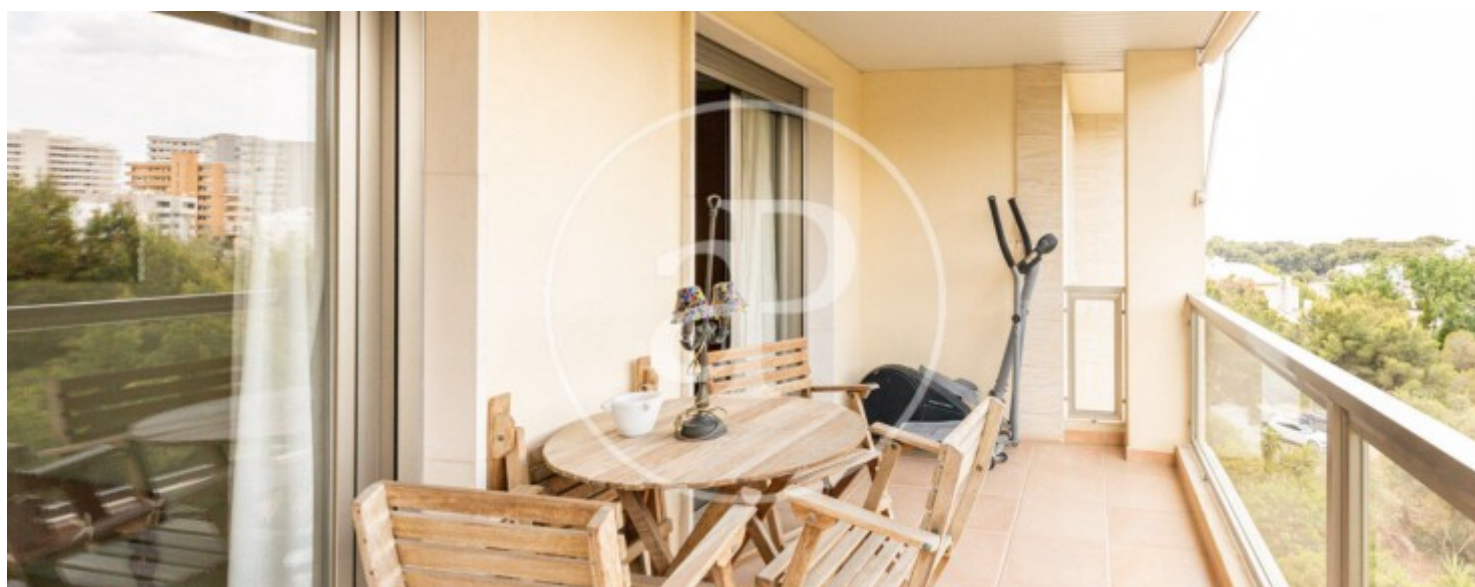
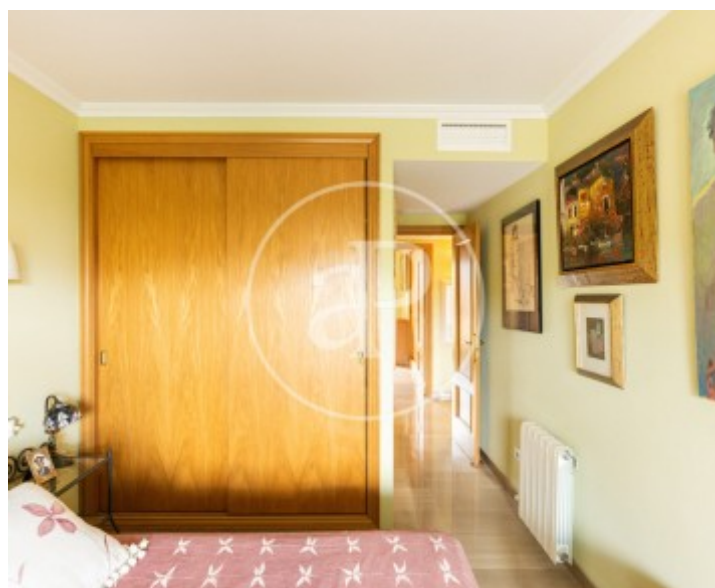
La Bonanova, Palma de Mallorca

REF. VPM2305025



La Bonanova, Palma de Mallorca

REF. VPM2305025



La Bonanova, Palma de Mallorca

REF. VPM2305025



The information about any property is not binding to any offer or contract. Any verbal or written declaration made by aProperties with regards to the value or condition of the property should not be considered accurate or factual. The pictures make reference to some parts of the property at the times that they were taken. The areas, dimensions and distances that are given are approximate and should be checked by the client. The images are computer generated and are just an approximate indication of the real appearance of the property; these may change at any time. The information with regards to the property may also change at any time.

For **more information** or
to make an appointment

apropertiespalma@aproperties.es
Tel: 871 16 01 60
www.aproperties.es