



La Bonanova, Palma de Mallorca

REF. VPM2509009

# Duplex for sale in La Bonanova

## Features

- ✓ Views
- ✓ Heating
- ✓ Furnished
- ✓ Boxroom
- ✓ AACC
- ✓ Terrace
- ✓ Backyard
- ✓ Pool
- ✓ Has parking

Surface

153 m<sup>2</sup>

Bedrooms

4

Bathrooms

3

Price

800,000 €



**This attractive duplex stands out for its bright living room on the first floor, which features a cozy fireplace and a large window that opens onto the outdoor terrace.**

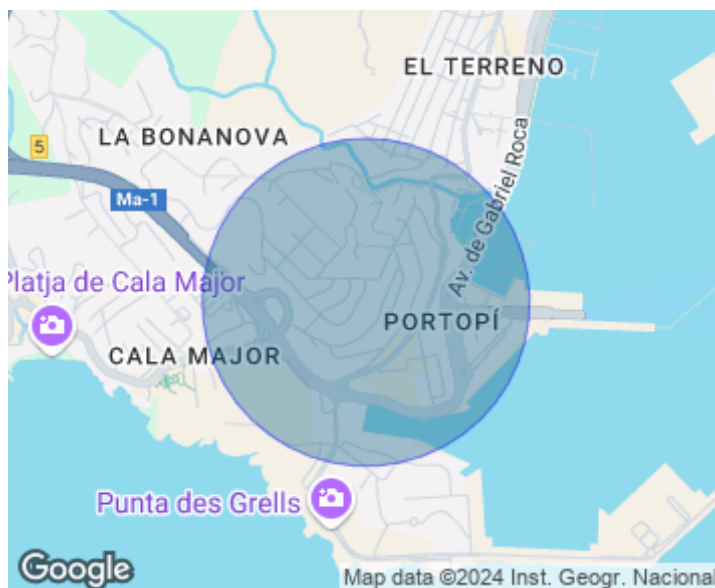
The modern kitchen, fully equipped and with a generous central island, becomes the perfect meeting point for the family. On this floor there is also a practical laundry room and a guest toilet. On the upper floor, four cozy bedrooms are distributed. The master suite, which overlooks the garden, includes a private bathroom. The other three bedrooms, two of them double and one single, ideal for an office, share a complete bathroom that has been recently renovated. The garden, designed in a

charming Mediterranean style, provides direct access from the interior and features a barbecue area and a small wooden casita, perfect for outdoor enjoyment. In the basement, the property includes two parking spaces and two spacious storage rooms, providing extra comfort and functionality. Located in one of the most exclusive and quiet neighborhoods of Palma, La Bonanova is characterized by its upscale residential environment, ideal for families and those looking for a relaxed lifestyle close to the city. This area is known for its proximity to some of the best international schools on the...

**Contact us,**  
we will be happy to assist you,  
to offer you more details and information.

La Bonanova, Palma de Mallorca

REF. VPM2509009





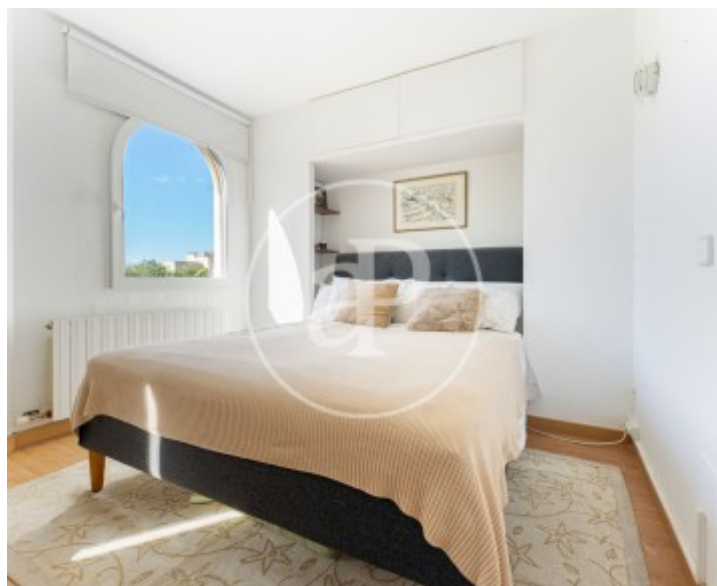
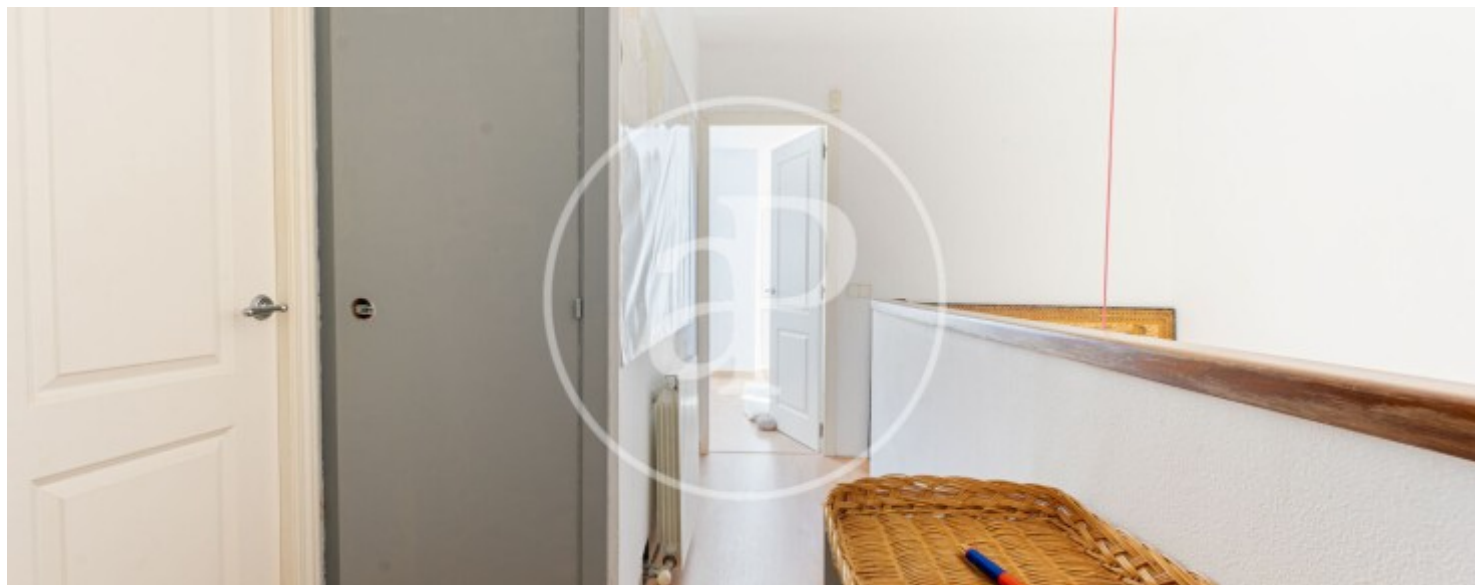
La Bonanova, Palma de Mallorca

REF. VPM2509009



La Bonanova, Palma de Mallorca

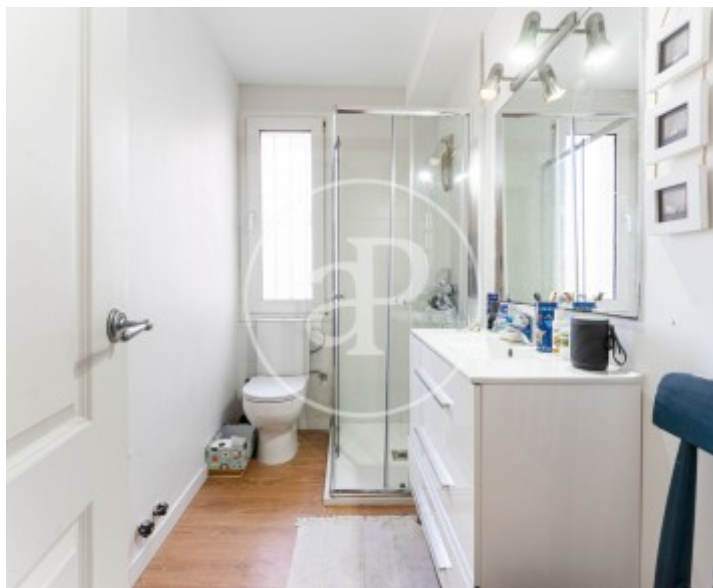
REF. VPM2509009





La Bonanova, Palma de Mallorca

REF. VPM2509009



The information about any property is not binding to any offer or contract. Any verbal or written declaration made by aProperties with regards to the value or condition of the property should not be considered accurate or factual. The pictures make reference to some parts of the property at the times that they were taken. The areas, dimensions and distances that are given are approximate and should be checked by the client. The images are computer generated and are just an approximate indication of the real appearance of the property; these may change at any time. The information with regards to the property may also change at any time.

For **more information** or  
to make an appointment

[apropertiespalma@aproperties.es](mailto:apropertiespalma@aproperties.es)  
Tel: 871 16 01 60  
[www.aproperties.es](http://www.aproperties.es)