



La Bonanova, Palma de Mallorca

REF. VPM2302042

Ground floor apartment for sale with terrace, sea and cathedral views

Features

- ✓ Views
- ✓ Heating
- ✓ Terrace
- ✓ Backyard
- ✓ Lift
- ✓ Has parking

Surface

125 m²

Bedrooms

3

Bathrooms

2

Price

450,000 €



Located in the popular residential area of Bonanova, only a few minutes away from the Porto Pi shopping centre and the famous Club de Mar, this exterior flat of approx.

100 sqm east facing with beautiful views to the sea and the cathedral is in the excellent location of one of the best residential areas in Palma. This residential complex has open spaces in its communal area with large garden areas. The property to renovate, stands out for its brightness and its beautiful sea views. The distribution includes three bedrooms, all exterior and full of light, of which two are doubles and one single with built-in wardrobes, two complete bathrooms, one of them en suite, the

kitchen with direct access to the laundry/utility room and to a spacious terrace which surrounds the whole house. The spacious living-dining room opens onto the front terrace with sea views from where you can enjoy quiet evenings and the emblematic illuminated Cathedral of Palma in the foreground. The equipment includes natural gas heating throughout the house, interior and exterior wood carpentry with Majorcan shutters, plus a parking space at street level, all in a nice residential complex making this property a great property and magnificent INVESTMENT OPPORTUNITY!

Contact us,
we will be happy to assist you,
to offer you more details and information.

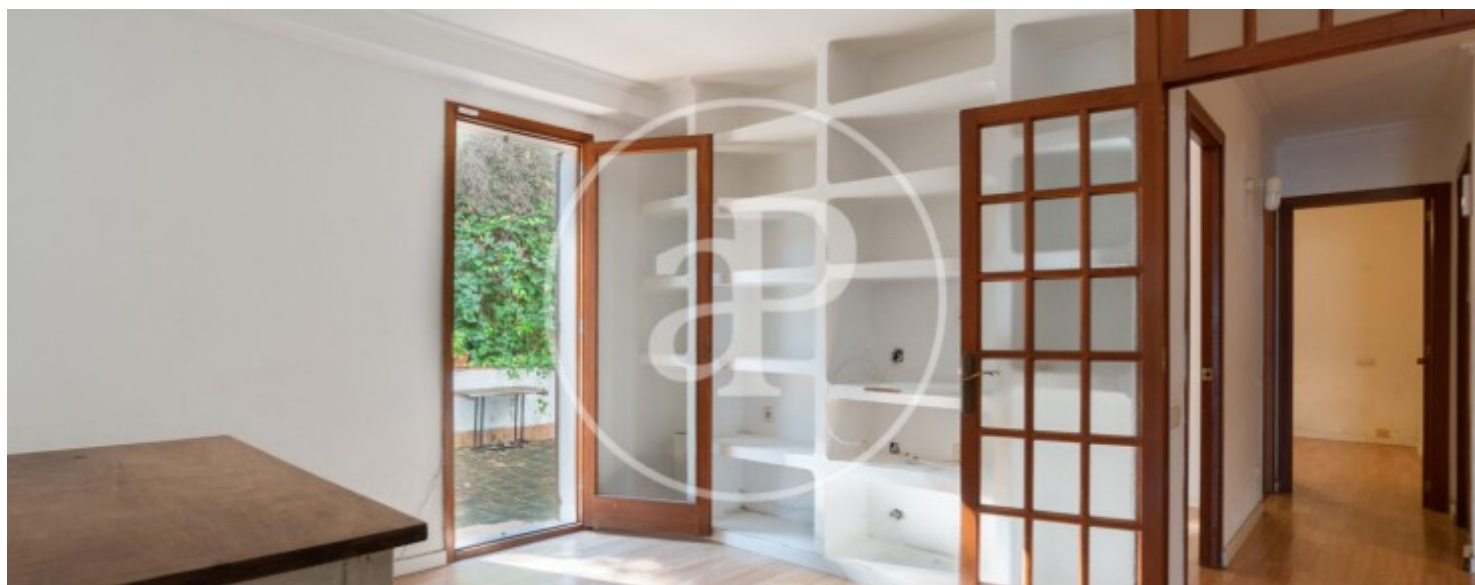
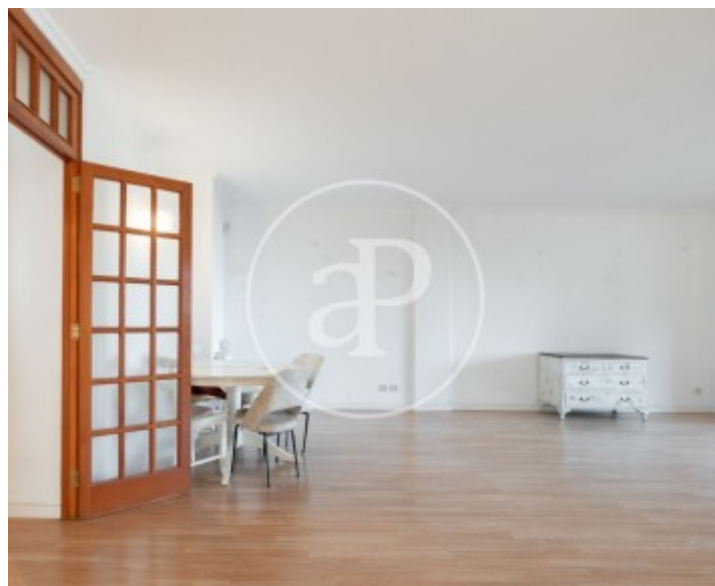
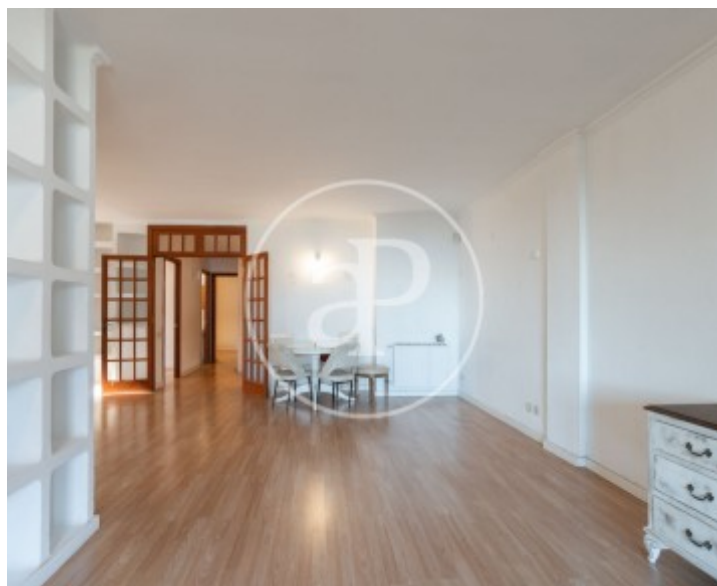
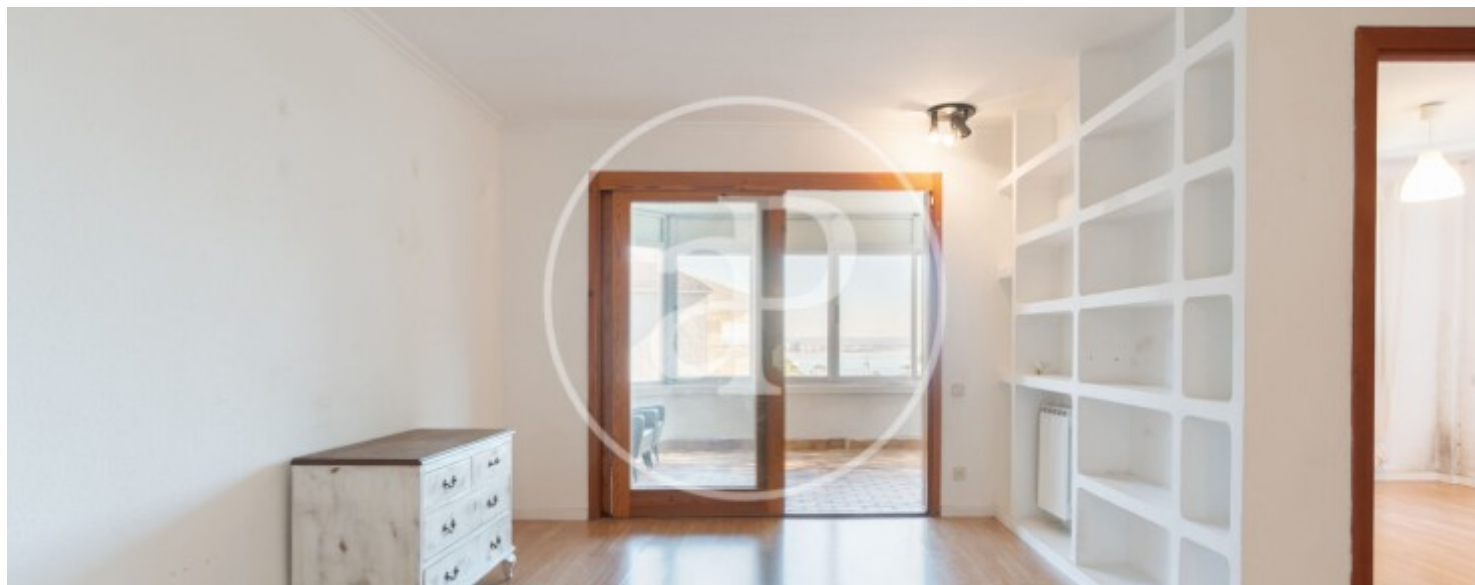
La Bonanova, Palma de Mallorca

REF. VPM2302042



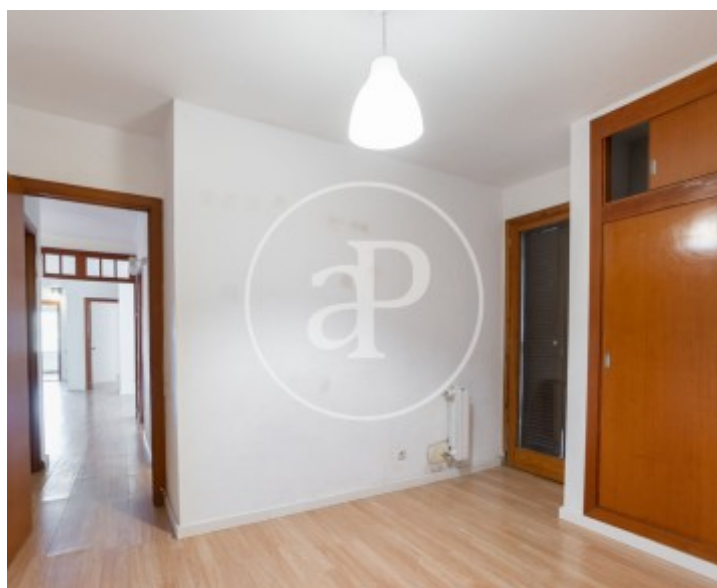
La Bonanova, Palma de Mallorca

REF. VPM2302042



La Bonanova, Palma de Mallorca

REF. VPM2302042



La Bonanova, Palma de Mallorca

REF. VPM2302042



The information about any property is not binding to any offer or contract. Any verbal or written declaration made by aProperties with regards to the value or condition of the property should not be considered accurate or factual. The pictures make reference to some parts of the property at the times that they were taken. The areas, dimensions and distances that are given are approximate and should be checked by the client. The images are computer generated and are just an approximate indication of the real appearance of the property; these may change at any time. The information with regards to the property may also change at any time.

For **more information** or
to make an appointment

apropertiespalma@aproperties.es
Tel: 871 16 01 60
www.aproperties.es