

Génova, Palma de Mallorca

REF. VPM2304033



Duplex with Terrace in Génova (Palma de Mallorca)

Features

- ✓ Views
- ✓ Heating
- ✓ Boxroom
- ✓ AACC
- ✓ Terrace
- ✓ Pool
- ✓ Has parking

Price

1,690,000 €

Surface

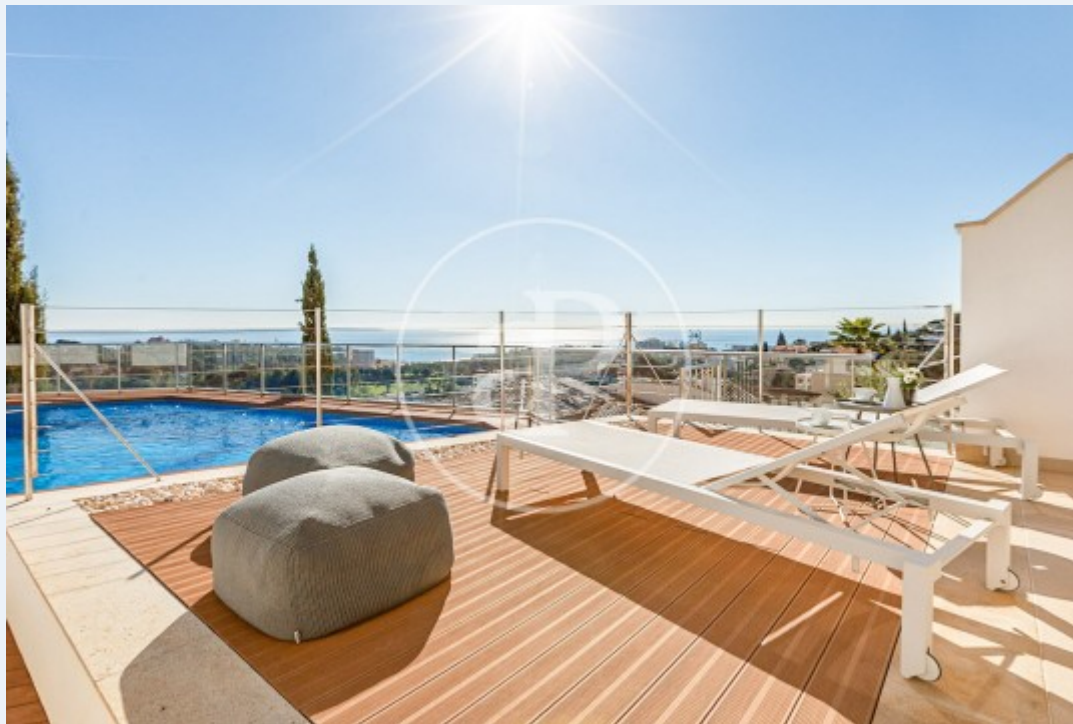
180 m²

Bedrooms

3

Bathrooms

3



Beautiful townhouse with stunning sea views, pool and garage in Génova, Palma! Welcome to this stunning townhouse in Génova.

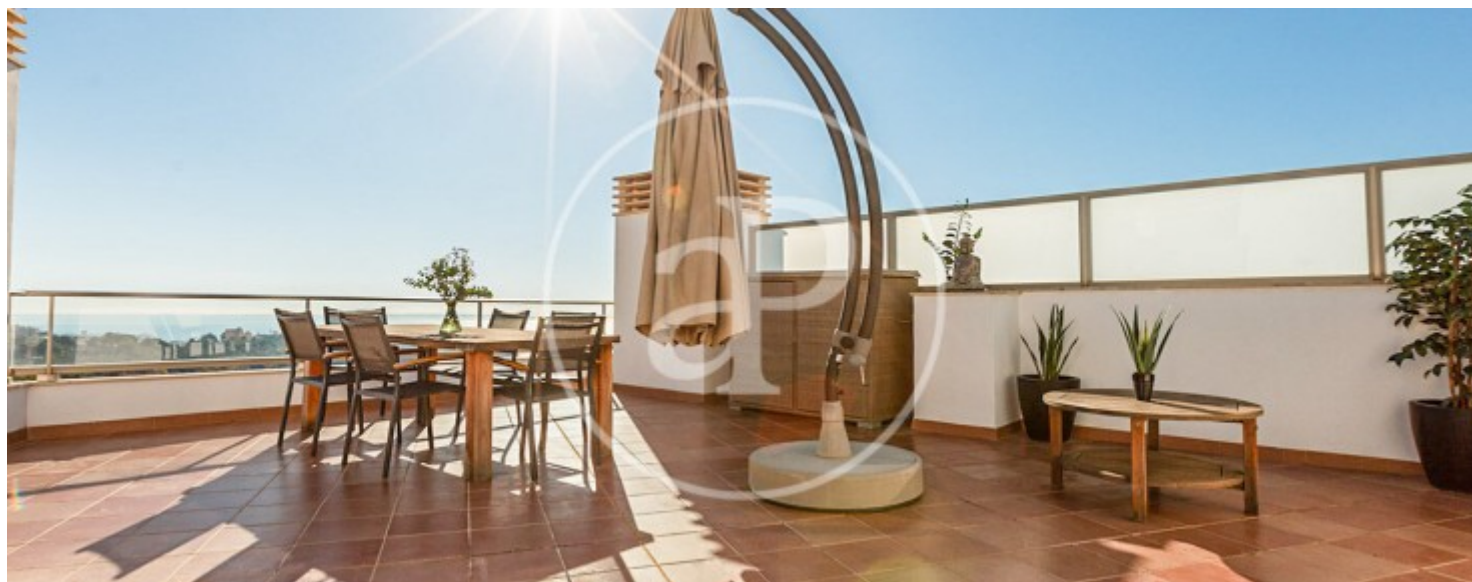
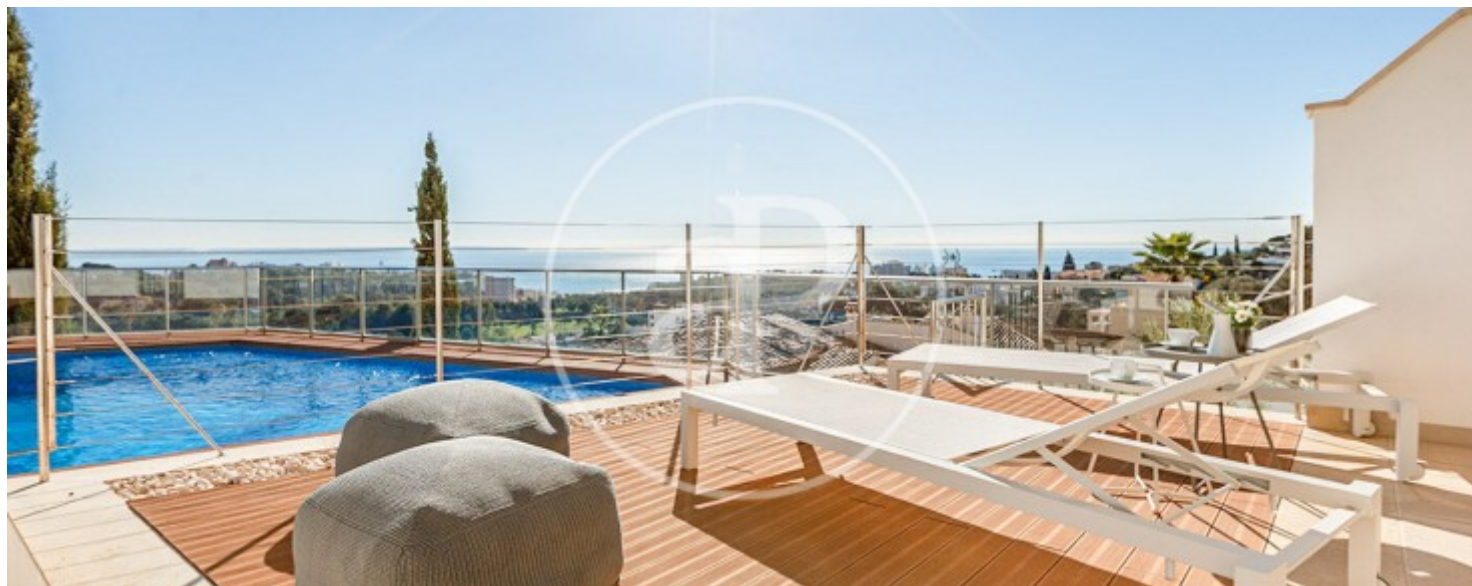
It has 3 bedrooms, 2 bathrooms, 1 guest toilet, several terraces (including the large roof terrace with amazing views), community pool and garage. The living room, dining room and kitchen are open plan and very bright with access to a terrace. Upstairs we find the amazing roof terrace with plenty of space for both the outdoor kitchen and the living and dining area. The view from here is just a breath away and you have a clear view over the bay of Palma. One floor down we find the bedrooms, the master bedrooms

with bathroom en suite and access to the terrace. Two of the three bedrooms have access to the solarium and the community pool with sun loungers. On the lower floor of the house there is a storage room and also direct access to the garage. The house has two parking spaces and easy access from the street. The small and well maintained community has only six townhouses in total. It is a beautiful townhouse with amazing views, in a very good location, close to Palma, nature and the surrounding beaches. Can you imagine living here?

Contact us,
we will be happy to assist you,
to offer you more details and information.

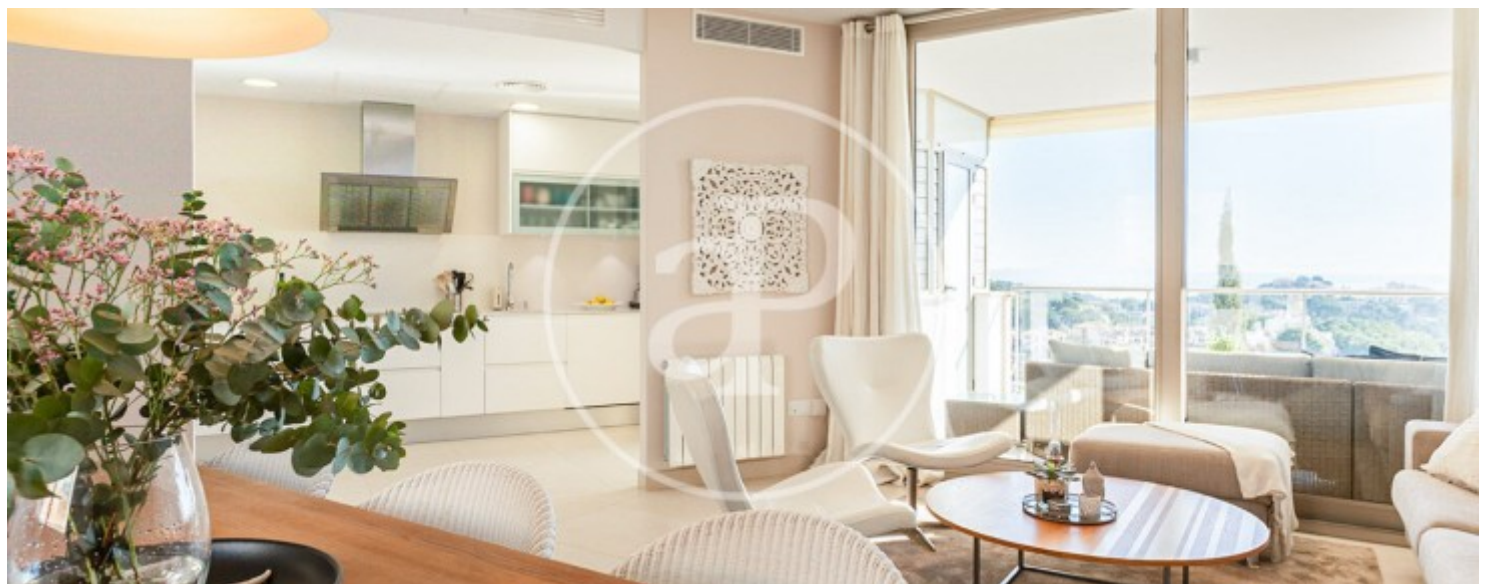
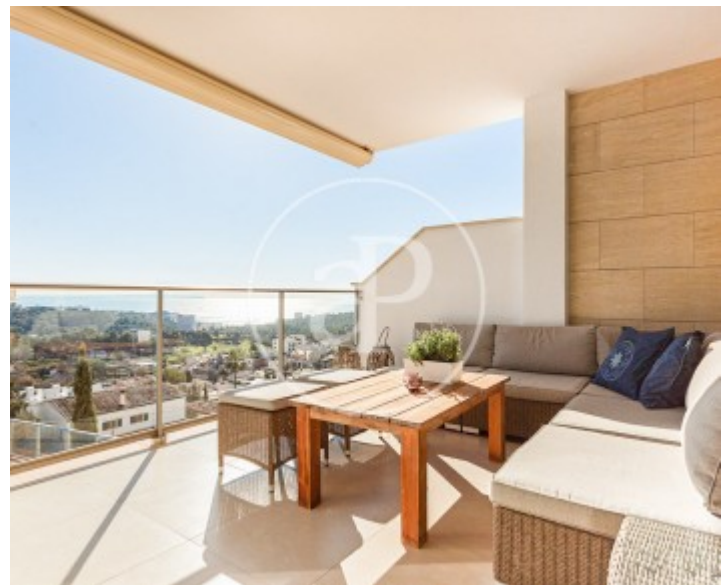
Génova, Palma de Mallorca

REF. VPM2304033



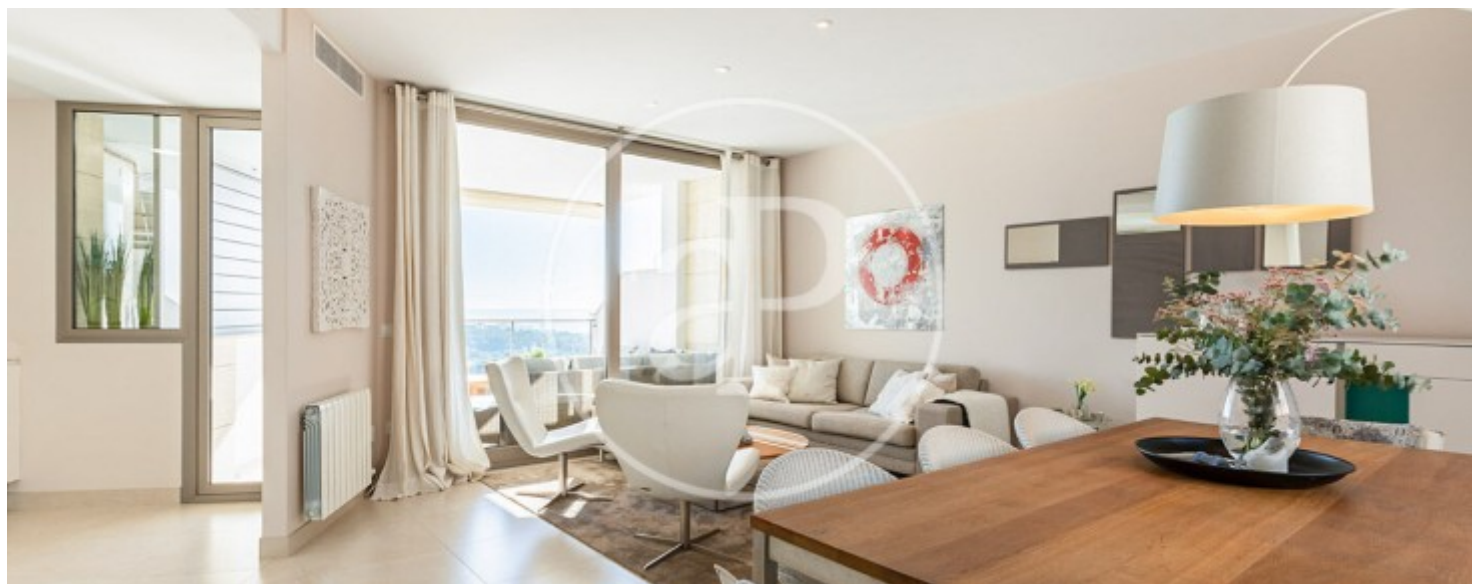
Génova, Palma de Mallorca

REF. VPM2304033



Génova, Palma de Mallorca

REF. VPM2304033





APROPERTIES
REAL ESTATE

Calle Unió 9
07001 Palma
T. 871 16 01 60
www.aproperties.es

Génova, Palma de Mallorca

REF. VPM2304033



The information about any property is not binding to any offer or contract. Any verbal or written declaration made by aProperties with regards to the value or condition of the property should not be considered accurate or factual. The pictures make reference to some parts of the property at the times that they were taken. The areas, dimensions and distances that are given are approximate and should be checked by the client. The images are computer generated and are just an approximate indication of the real appearance of the property; these may change at any time. The information with regards to the property may also change at any time.



For **more information** or
to make an appointment

apropertiespalma@aproperties.es
Tel: 871 16 01 60
www.aproperties.es