

Génova, Palma de Mallorca

REF. VPM2402006

House for sale in Génova

Features

- ✓ Views
- ✓ Heating
- ✓ Boxroom
- ✓ AACC
- ✓ Terrace
- ✓ Backyard
- ✓ Pool
- ✓ Has parking

Surface

320 m²

Plot surface

655 m²

Bedrooms

3

Bathrooms

3



Price

2,300,000 €

Discover this charming residence with a touch of history and modernity in every corner.

Built in 1984 and meticulously renovated in 2022, this property offers a perfect combination of classic elegance and contemporary comforts. Set on a 655SQM plot, the main house boasts spacious interior spaces with a fireplace, a fully equipped kitchen with patio, barbecue and a spectacular wood-burning oven, which connects to the ground floor space and the stunning renovated swimming pool. There is also an attached flat complete with its own living room, bedroom, kitchen and bathroom, ideal for guests or as an independent rental space. Enjoy panoramic views over the bay of Palma

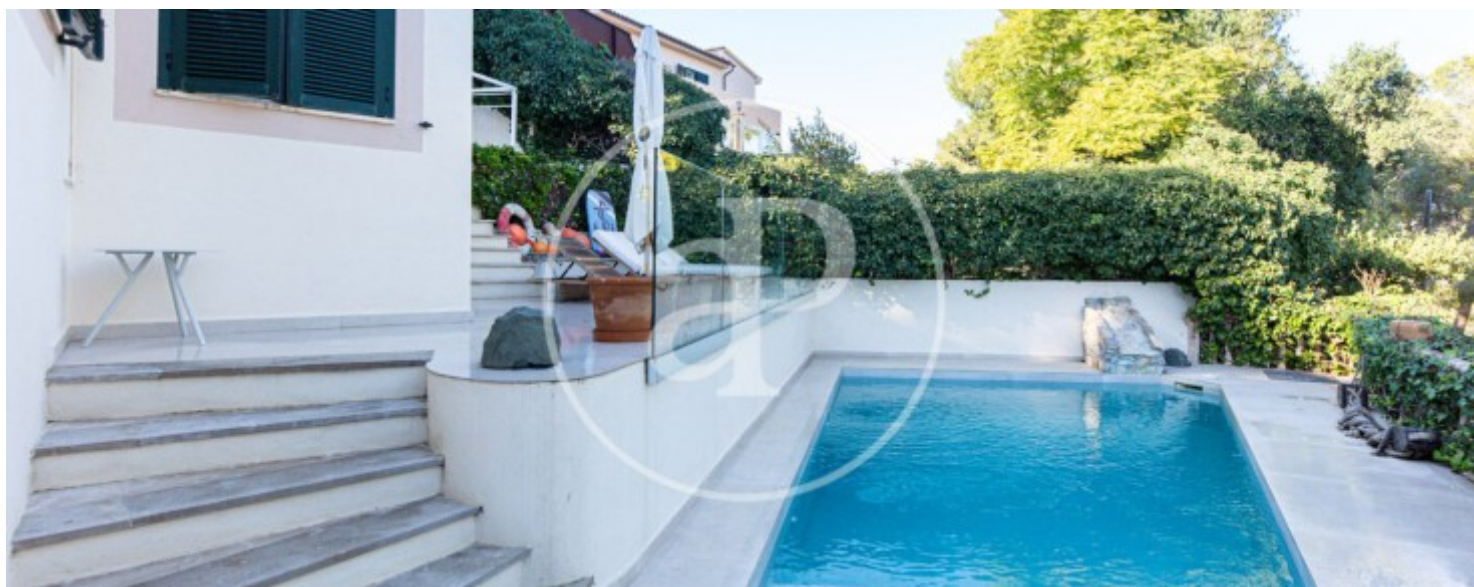
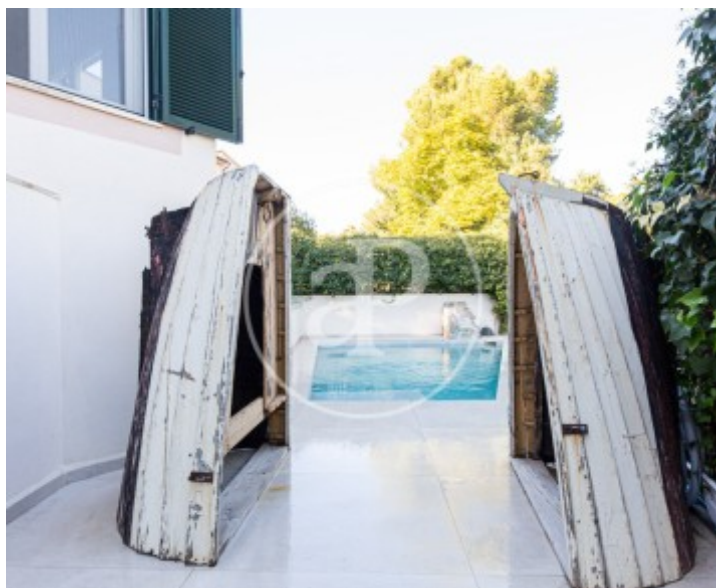
and the majestic Bellver Castle from the private terrace. Upstairs offers an office space and two spacious bedrooms with fitted wardrobes and terrace with panoramic views. The guest toilet has two bathrooms, an extensive separate laundry room, and is equipped with speakers in every corner. Equipped with state-of-the-art security systems, gas central heating, air conditioning, and an integrated sound system throughout the property, this residence offers the perfect balance between luxury and comfort. With a garage for two vehicles and a privileged location in Palma de Mallorca,...

Contact us,

we will be happy to assist you,
to offer you more details and information.

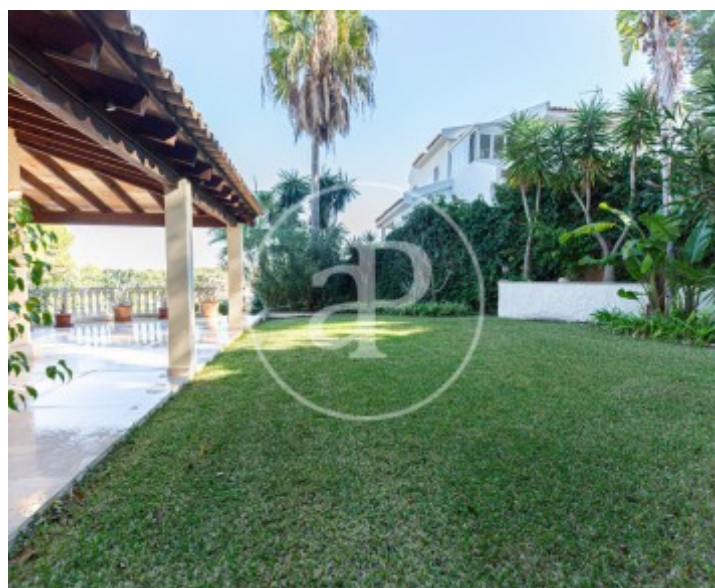
Génova, Palma de Mallorca

REF. VPM2402006



Génova, Palma de Mallorca

REF. VPM2402006



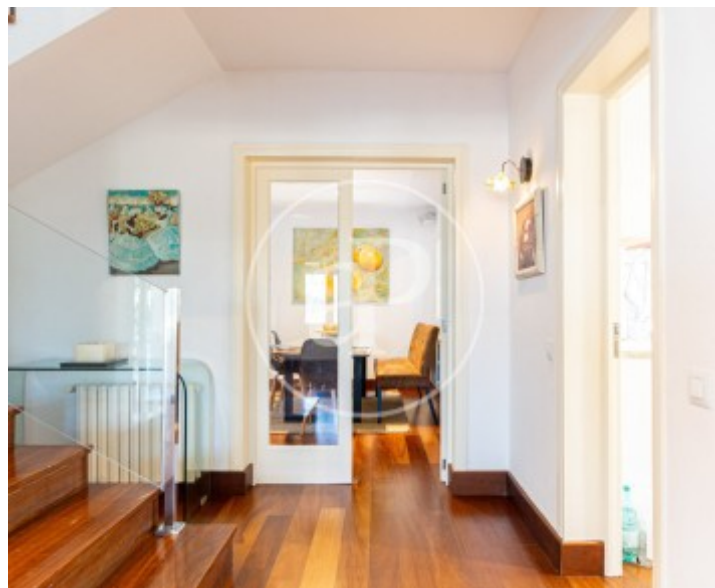
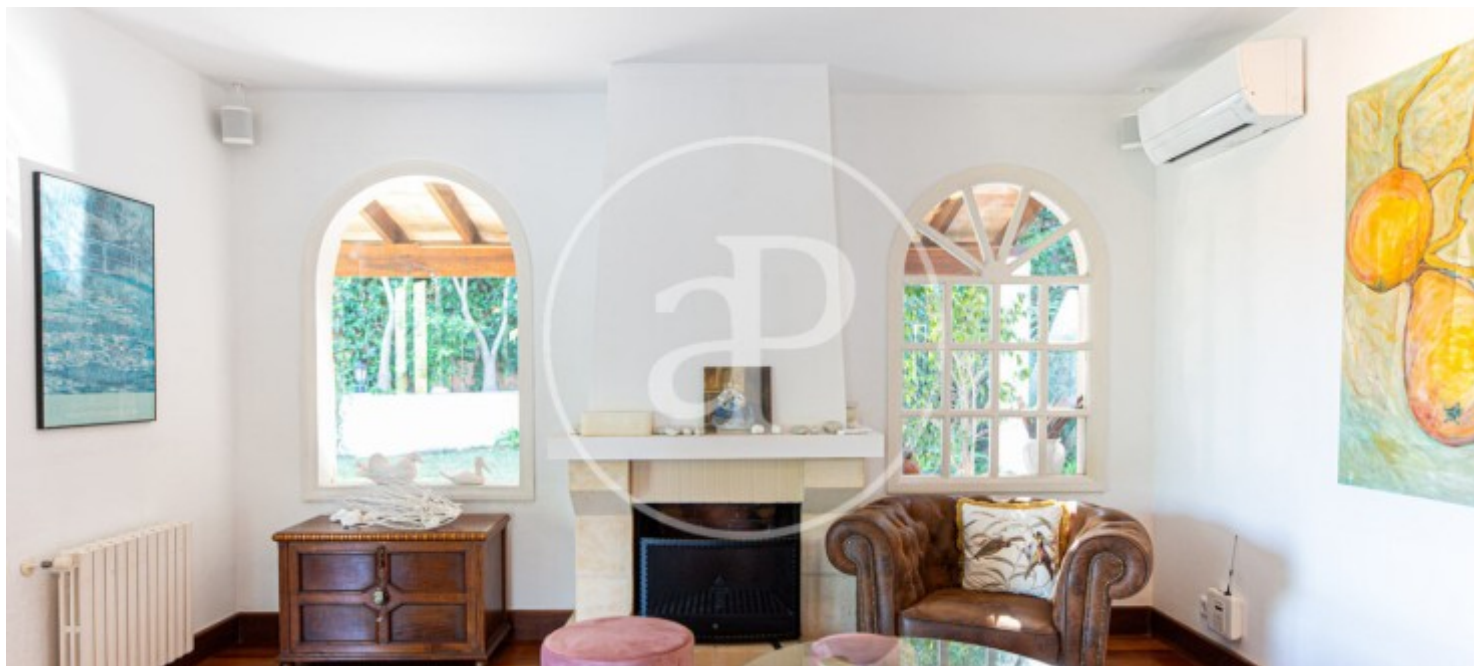
Génova, Palma de Mallorca

REF. VPM2402006



Génova, Palma de Mallorca

REF. VPM2402006



The information about any property is not binding to any offer or contract. Any verbal or written declaration made by aProperties with regards to the value or condition of the property should not be considered accurate or factual. The pictures make reference to some parts of the property at the times that they were taken. The areas, dimensions and distances that are given are approximate and should be checked by the client. The images are computer generated and are just an approximate indication of the real appearance of the property; these may change at any time. The information with regards to the property may also change at any time.

For **more information** or
to make an appointment

apropertiespalma@aproperties.es
Tel: 871 16 01 60
www.aproperties.es