

Establiments - Son Sardina, Palma de Mallorca

REF. VPM2212038



Finca in Establiments

Features

- ✓ Views
- ✓ Heating
- ✓ Boxroom
- ✓ AACC
- ✓ Terrace
- ✓ Backyard
- ✓ Pool
- ✓ Has parking

Price

2,250,000 €

Surface

583 m²

Plot surface

33,000 m²

Bedrooms

6

Bathrooms

3



Great property in a beautiful and quiet environment, where beauty and calmness will surround you.

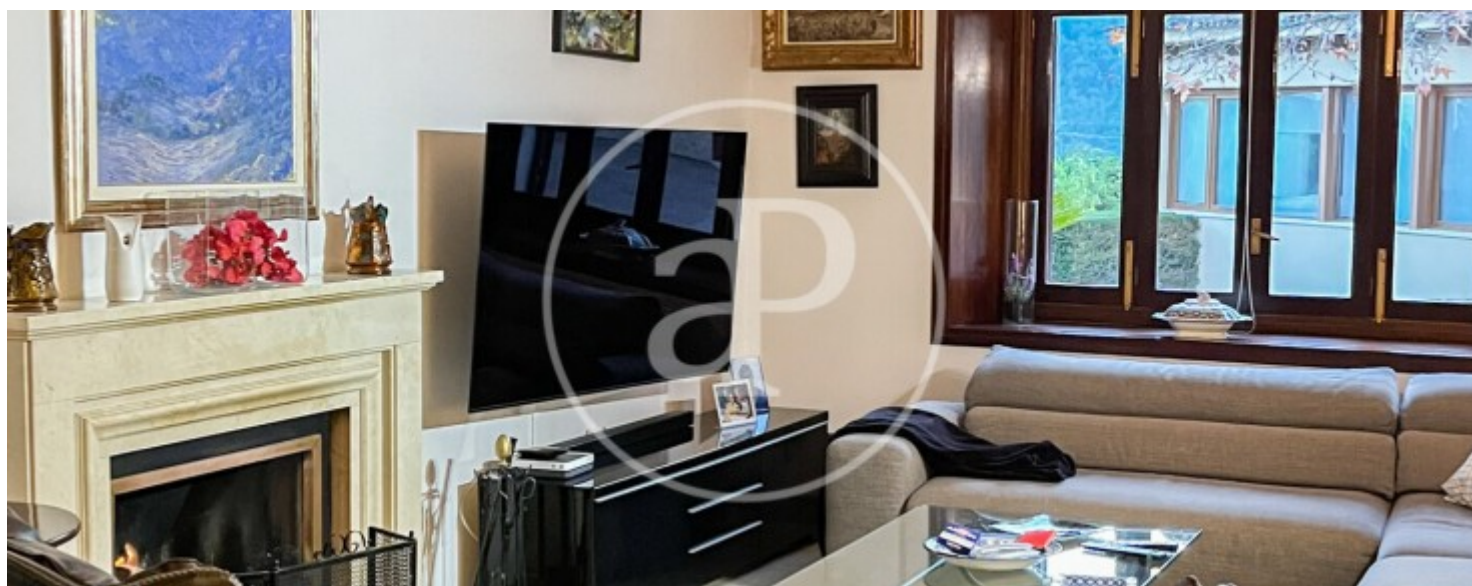
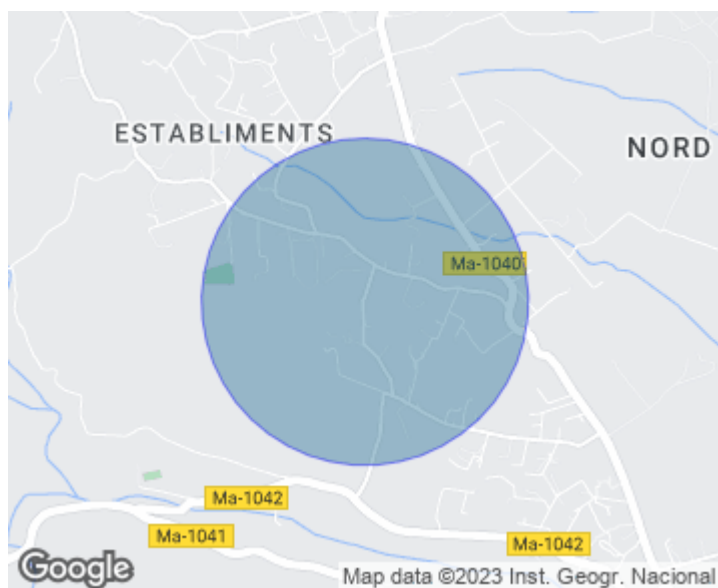
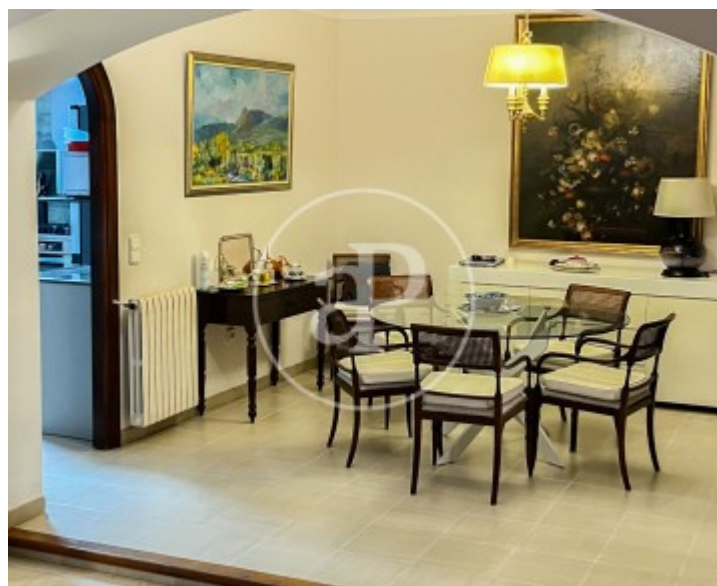
This property is wonderful for a family and nature lovers with easy access and very central to the small square of Establiments, schools and bus stop, wonderful excursions and very close to the Tramontana. The finca has 33.000sqm and a house of 450sqm very bright and comfortable. It also has a large porch of 50sqm, a beautiful swimming pool of 50sqm with a building with barbecue that you can enjoy all year round and that, without doubt, will become one of the favourite corners of more than one member of the family. It is a perfect place for meetings with friends,

celebrations, reading room and relaxation. The house has six bedrooms, three bathrooms, two living rooms with fireplace, dining room, office, laundry room and a small cellar in the basement where you can keep your wines at the right temperature in a natural way. There is a large garden area and a covered parking area of 44sqm. It also has its own well, cistern and automatic irrigation system. Away from the house, there is a large stable for at least two horses and two trotting tracks for horses. All this in Establiments, one of the most charming and sought-after locations only 10 minutes...

Contact us,
we will be happy to assist you,
to offer you more details and information.

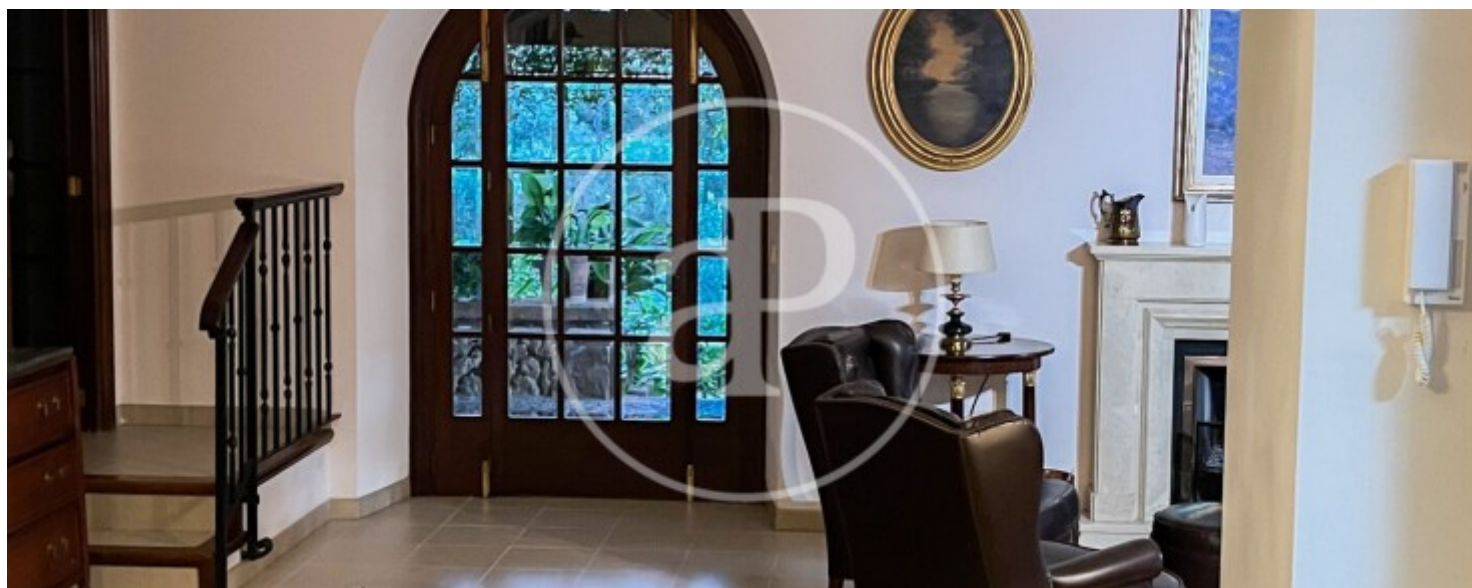
Establiments - Son Sardina, Palma de Mallorca

REF. VPM2212038



Establiments - Son Sardina, Palma de Mallorca

REF. VPM2212038



Establiments - Son Sardina, Palma de Mallorca

REF. VPM2212038





APROPERTIES
REAL ESTATE

Calle Unió 9
07001 Palma
T. 871 16 01 60
www.aproperties.es

Establiments - Son Sardina, Palma de Mallorca

REF. VPM2212038



The information about any property is not binding to any offer or contract. Any verbal or written declaration made by aProperties with regards to the value or condition of the property should not be considered accurate or factual. The pictures make reference to some parts of the property at the times that they were taken. The areas, dimensions and distances that are given are approximate and should be checked by the client. The images are computer generated and are just an approximate indication of the real appearance of the property; these may change at any time. The information with regards to the property may also change at any time.



**For more information or
to make an appointment**

apropertiespalma@aproperties.es
Tel: 871 16 01 60
www.aproperties.es