

(Es Rafal Vell)

Ref: ONPM2301002



New building (work) for sale with Terrace in Es Rafal Vell (Palma de Mallorca)

Wonderful New Development of 11 units in the Rafal Vell neighbourhood, 6 of which have already been sold. For sale: a ground floor, a first floor, a second floor, a second floor and two third penthouses. Extras such as parking space, storage room, pre-installation of hot and cold air conditioning, laminate flooring in the living room and bedrooms and porcelain stoneware floors in kitchens and bathrooms, photovoltaic system for self-consumption (optional) and swimming pool with progressive accessibility, resin and quartz beach type. Delivery last quarter of 2025
Can you imagine living here? Contact us and we will be delighted to inform you without obligation.

Palma de Mallorca / Es Rafal Vell

Surface
71 m² - 86 m²

Units
1

Completion
Q4 2025

- ✓ Heating
- ✓ Boxroom
- ✓ Terrace
- ✓ Backyard
- ✓ Pool
- ✓ Has parking

Price from 366,300 €



(Es Rafal Vell)

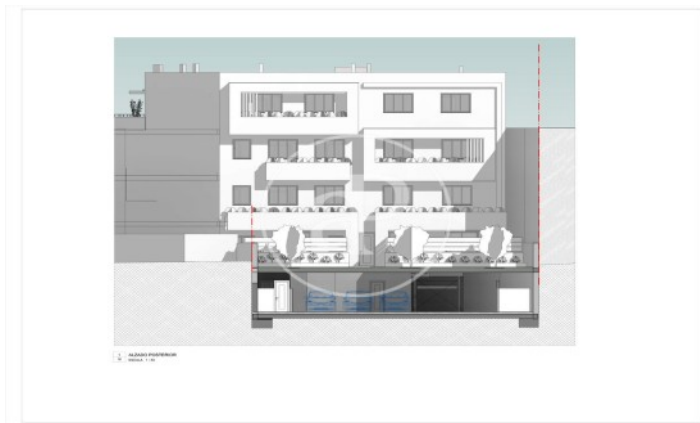
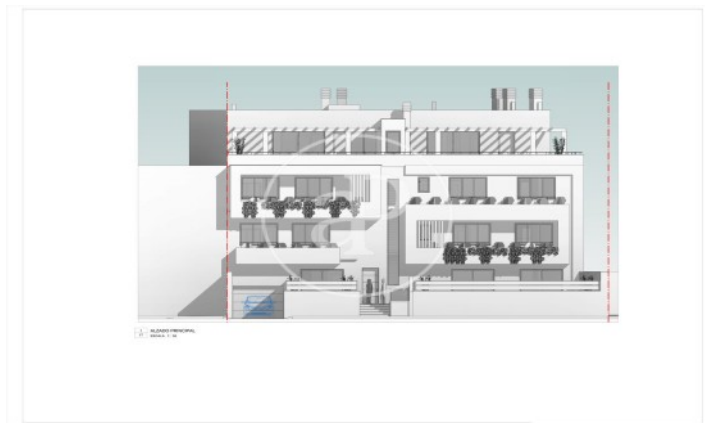
Ref: ONPM2301002

Units in this development

Type	Unit	Surface	Terrace	Bedrooms	Bathrooms	Price	State
Flat	Bajo A	71 m ²	1 (28 m ²)	2	1	€ 377,741.01	Available
Flat	1° E	83 m ²	-	3	2	€ 295,000	Sold
Flat	2° H	86 m ²	-	3	2	€ 366,300	Available
Attic	3° M	73 m ²	1 (38 m ²)	2	1	€ 418,610	Available
Attic	3° N	77 m ²	1 (40 m ²)	2	1	€ 425,481	Available

(Es Rafal Vell)

Ref: ONPM2301002



The information about any property is not binding to any offer or contract. Any verbal or written declaration made by aProperties with regards to the value or condition of the property should not be considered accurate or factual. The pictures make reference to some parts of the property at the times that they were taken. The areas, dimensions and distances that are given are approximate and should be checked by the client. The images are computer generated and are just an approximate indication of the real appearance of the property; these may change at any time. The information with regards to the property may also change at any time.

Contact us today for more information or to arrange a viewing

Tel: 871 16 01 60

apropertiespalma@aproperties.es

<https://www.aproperties.es>