

Es Fortí, Palma de Mallorca

REF. VPM2401020



Apartment for sale in Camp den Serralta

Features

Surface

221 m²

Bedrooms

6

Bathrooms

2

✓ Lift

Price

569,000 €



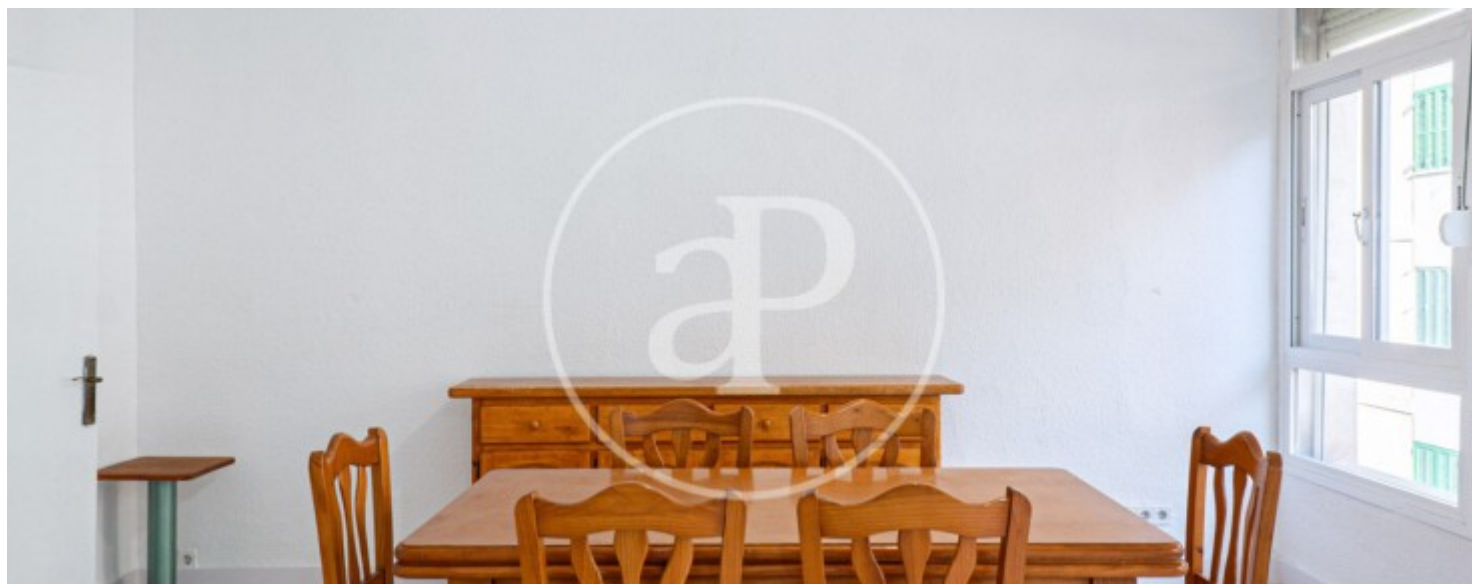
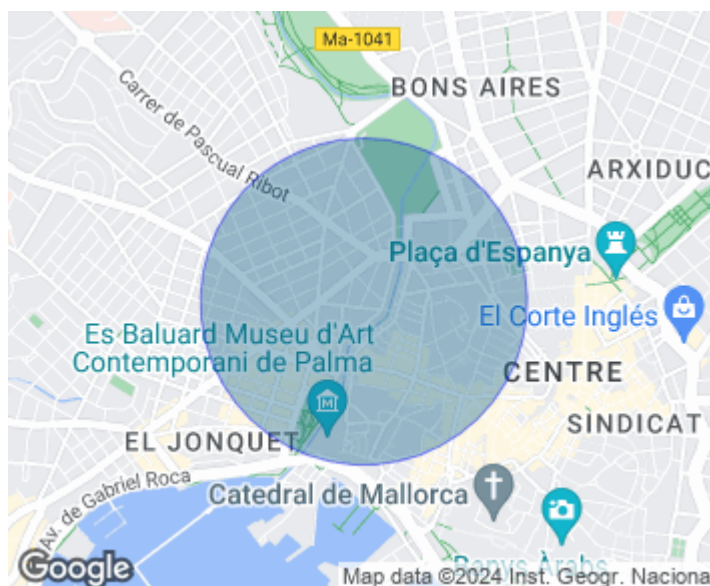
Situated within walking distance to the prominent street Paseo de Mallorca, this impressive residential complex offers an ideal location to explore the centre of Palma with ease, adjoining the districts of Santa Catalina, Jaume III and Es Fortí. This exclusive apartment, carefully maintained, occupies the 2nd floor and benefits from a lift. With a living area of 221sqm, according to the nota simple, it is distributed efficiently. Generous living/dining room, with almost 40sqm, is notable for its large windows, while the separate kitchen has access to an interior balcony of 8sqm. In total, there are 6 bedrooms, all exterior, with 5 of them doubles and 3 complete bathrooms. This property offers a unique versatility thanks to its privileged location and its ample space, ideal for coworking, offices

or other businesses that require multiple rooms. It is also a perfect option as a home for a large family. Additionally, the property features details such as 2 accesses from the entrance hall, a pantry room in the kitchen and another storage space on the balcony. The double glazed aluminium carpentry covers the entire property, except for the bathrooms and kitchen. There are 6 built-in wardrobes strategically distributed. The estate, well kept and friendly thanks to the dedication of the owners, adds to the quality of this property. We invite you to explore this magnificent property in one...

Contact us,
we will be happy to assist you,
to offer you more details and information.

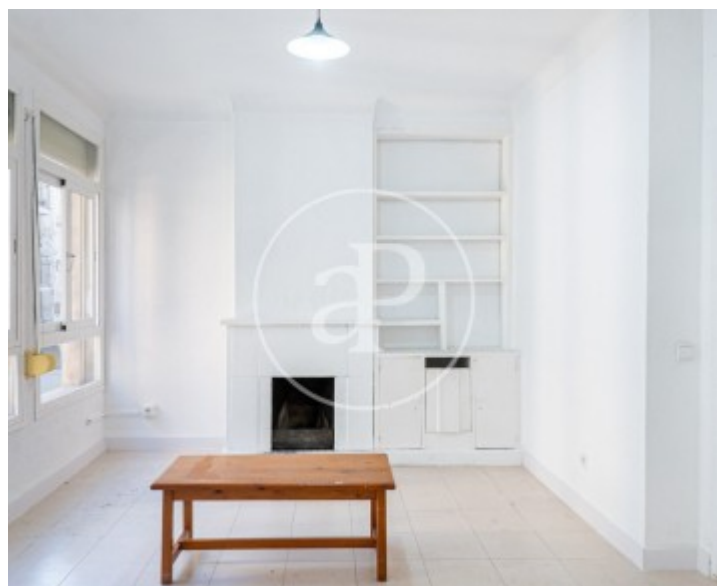
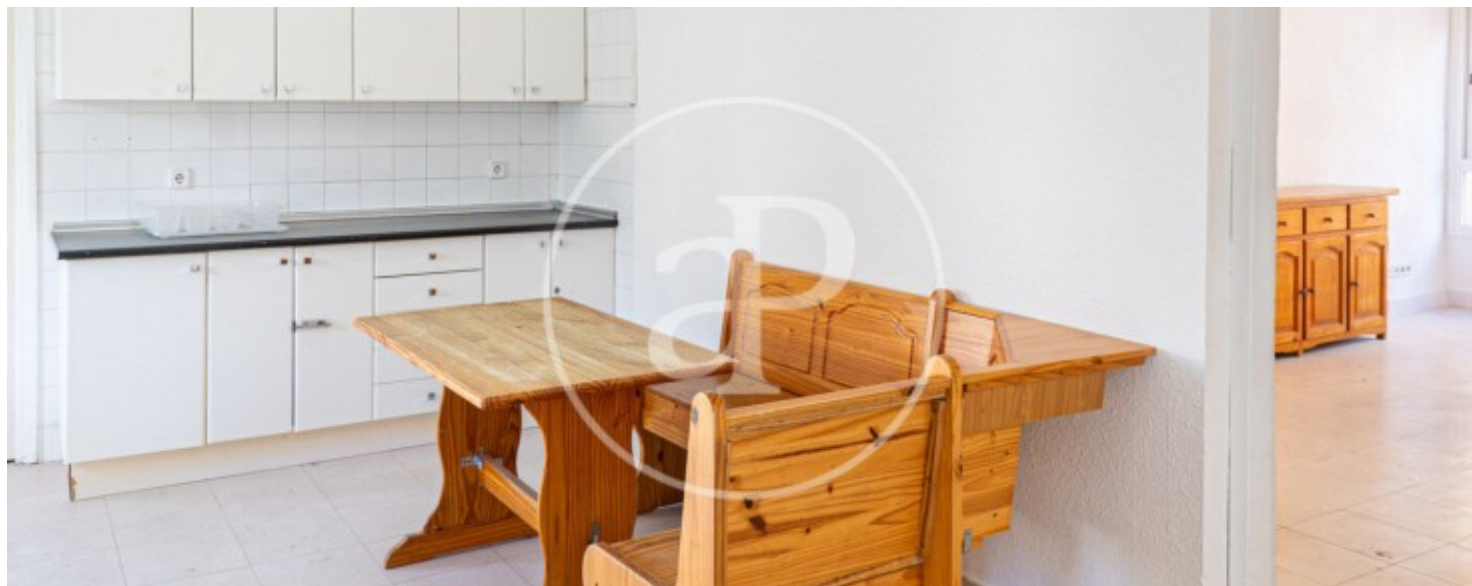
Es Fortí, Palma de Mallorca

REF. VPM2401020



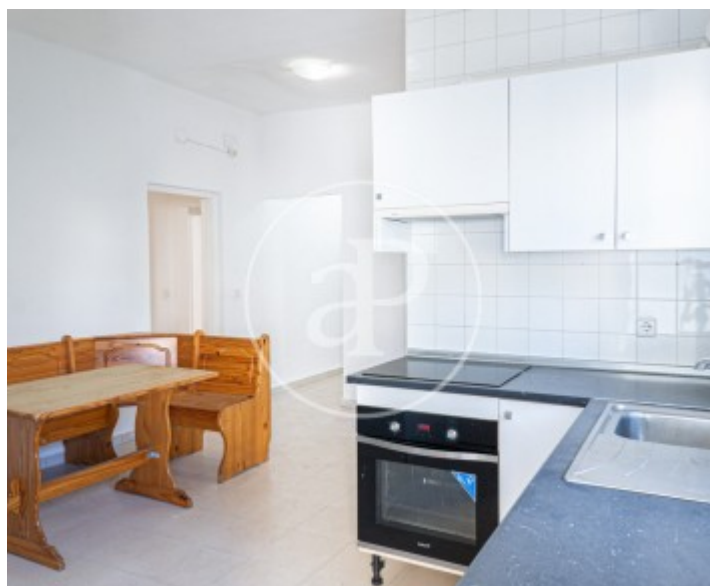
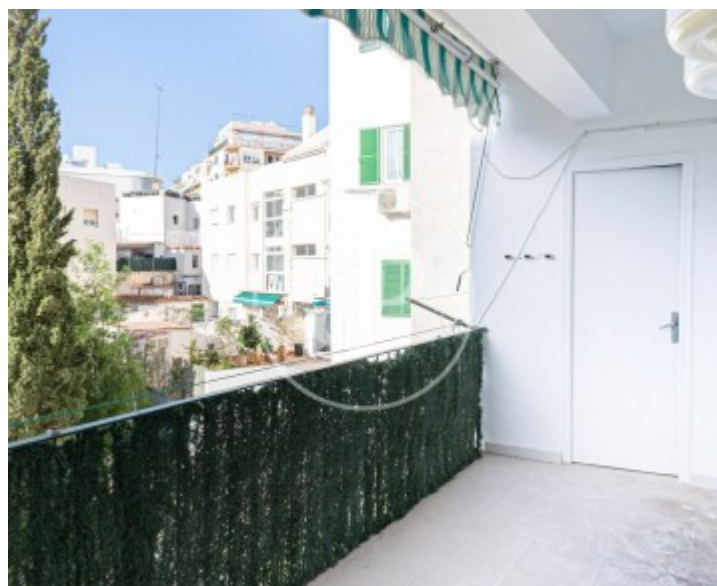
Es Fortí, Palma de Mallorca

REF. VPM2401020



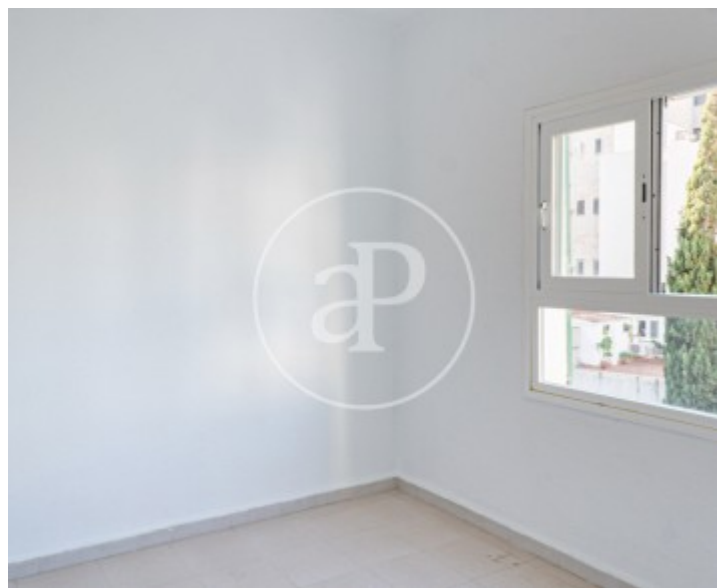
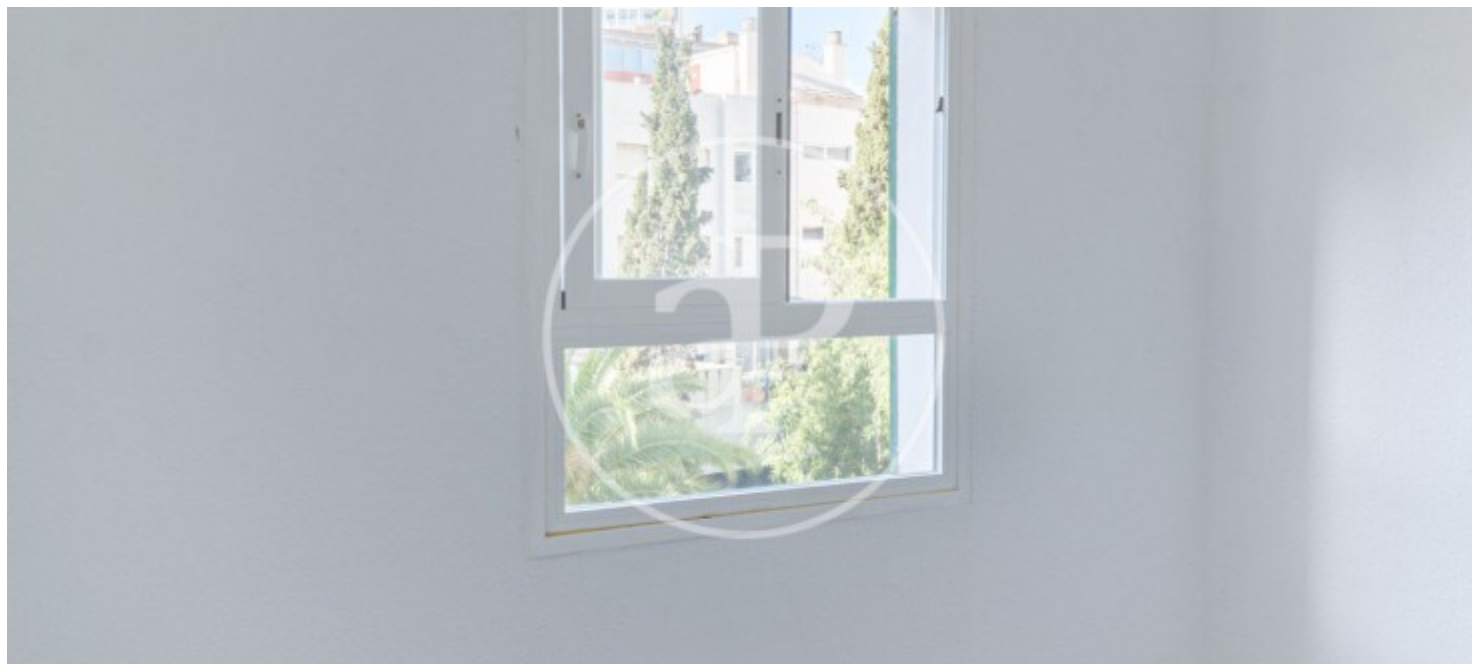
Es Fortí, Palma de Mallorca

REF. VPM2401020



Es Fortí, Palma de Mallorca

REF. VPM2401020



The information about any property is not binding to any offer or contract. Any verbal or written declaration made by aProperties with regards to the value or condition of the property should not be considered accurate or factual. The pictures make reference to some parts of the property at the times that they were taken. The areas, dimensions and distances that are given are approximate and should be checked by the client. The images are computer generated and are just an approximate indication of the real appearance of the property; these may change at any time. The information with regards to the property may also change at any time.



For **more information** or
to make an appointment

apropertiespalma@aproperties.es
Tel: 871 16 01 60
www.aproperties.es