

Es Fortí, Palma de Mallorca

REF. APMS2505020

Flat for rent with balcony in the heart of Palma

Features

- ✓ Views
- ✓ Lift
- ✓ Furnished

Price
1,700 €

Surface
60 m²

Bedrooms
2

Bathroom
1



This is a flat of 58 sqm and 8 sqm of terrace located next to the popular area of Paseo Mallorca with beautiful views of the city.

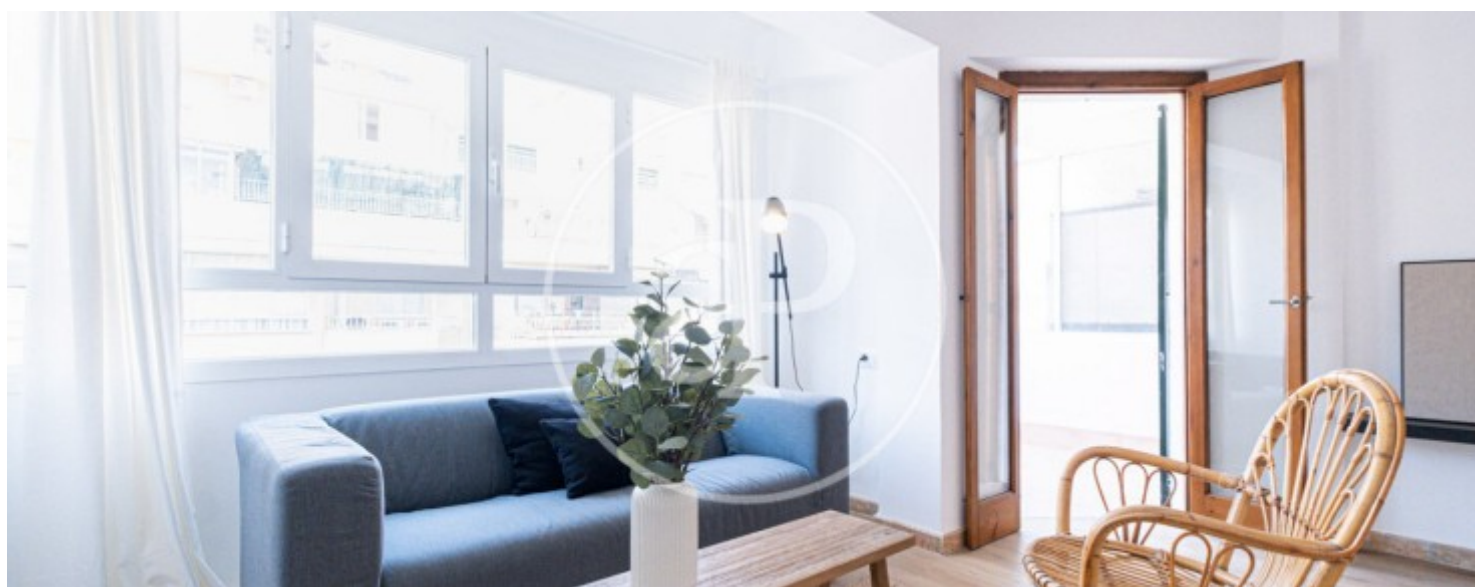
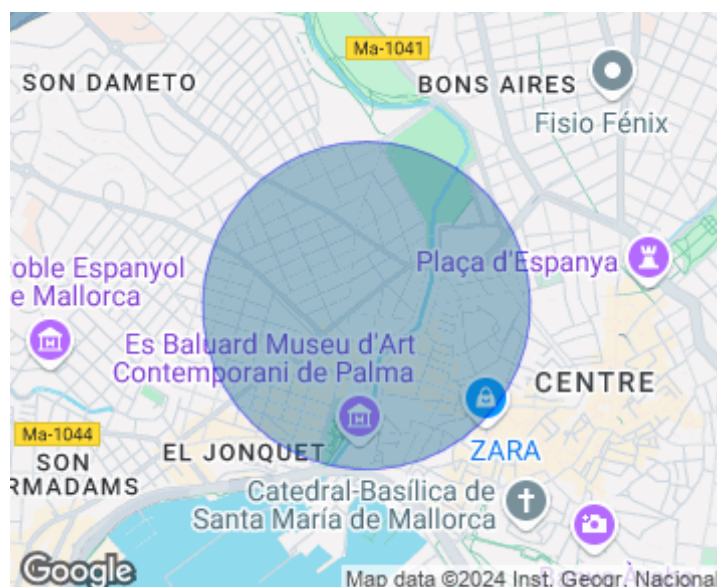
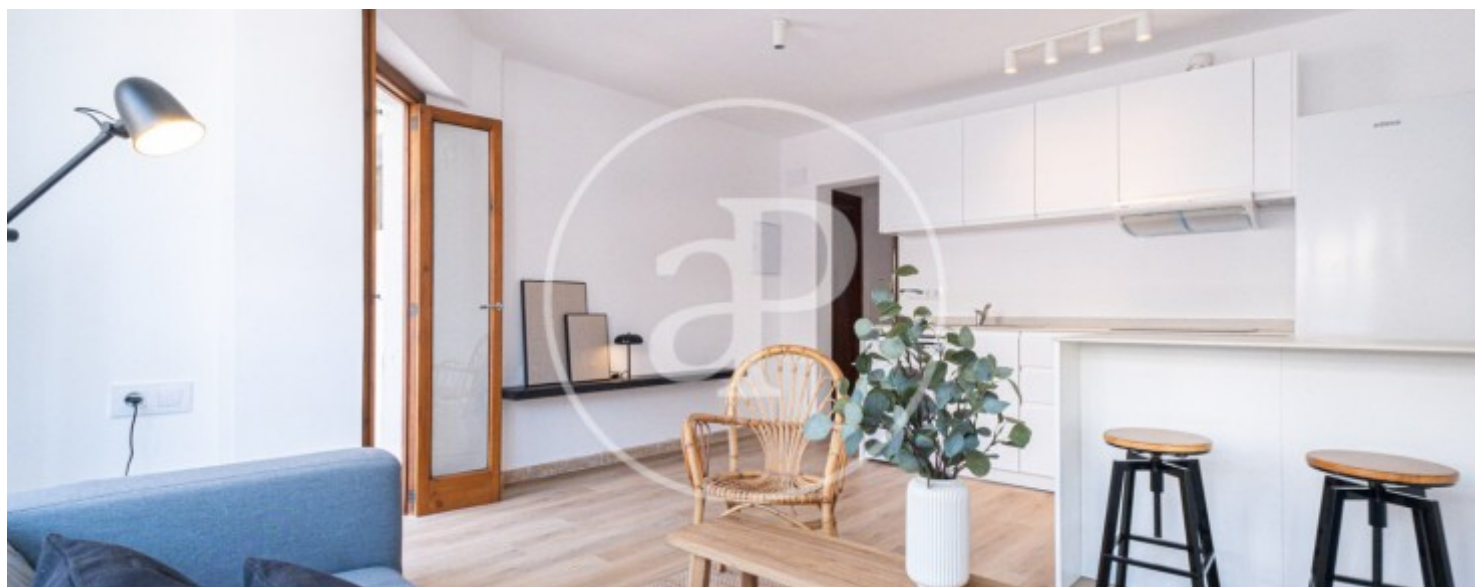
On entering the flat we find a small hall that leads us to the living-dining room, spacious and bright thanks to the large window that shows us the views of the city. It communicates with the balcony, arranged with a table and chairs to enjoy the views and a quiet dinner. The kitchen is fully equipped and has a comfortable island to add extra space when cooking or to have an informal aperitif in it. The flat has two furnished double bedrooms and a bathroom. All the rooms are exterior, one of them has its own balcony. The flat includes a

storage room, very practical to use as a bicycle parking and as an additional space to the property. The flat is located less than 5 minutes away from the beautiful Paseo Mallorca, very well communicated and surrounded by shops and leisure areas. The flat is located on the fourth floor (with lift). Can you imagine living here, we are waiting for your call!

Contact us,
we will be happy to assist you,
to offer you more details and information.

Es Fortí, Palma de Mallorca

REF. APMS2505020



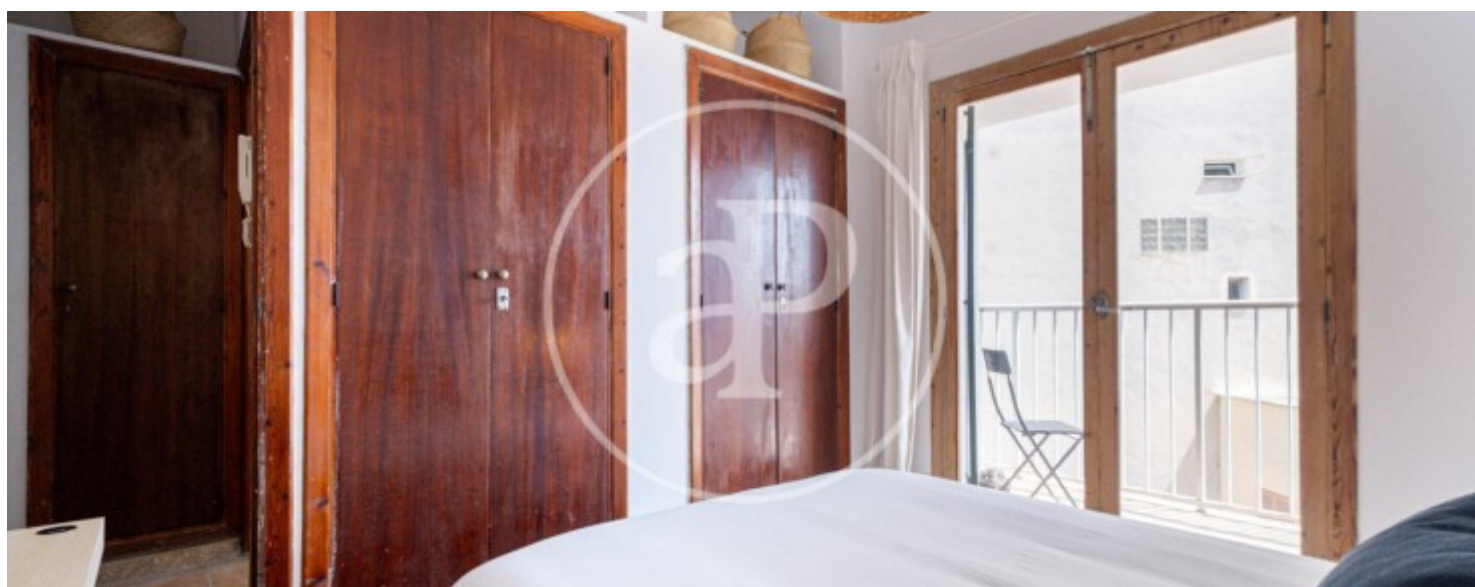
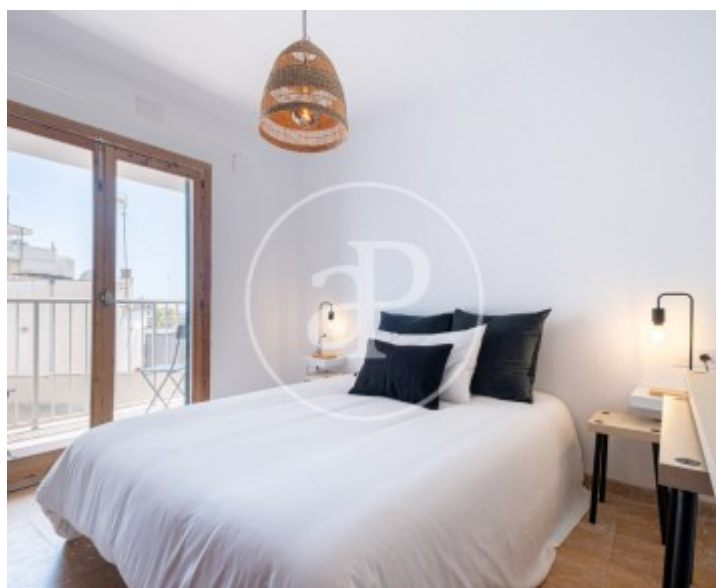
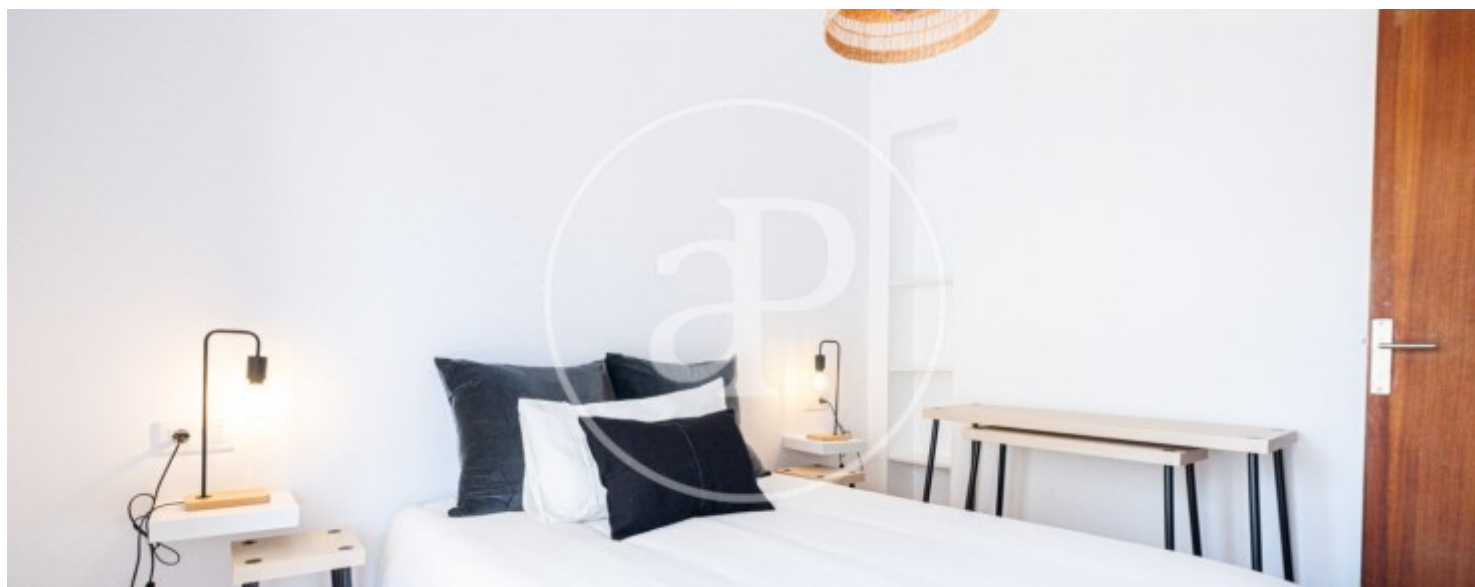
Es Fortí, Palma de Mallorca

REF. APMS2505020



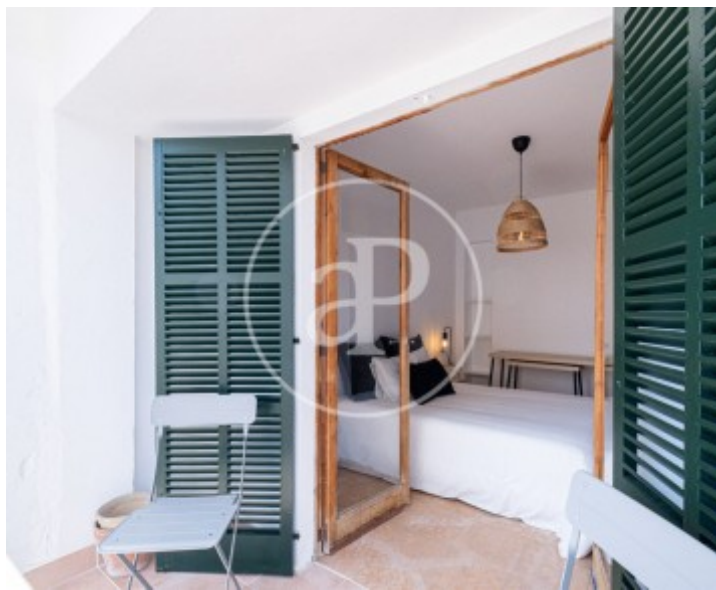
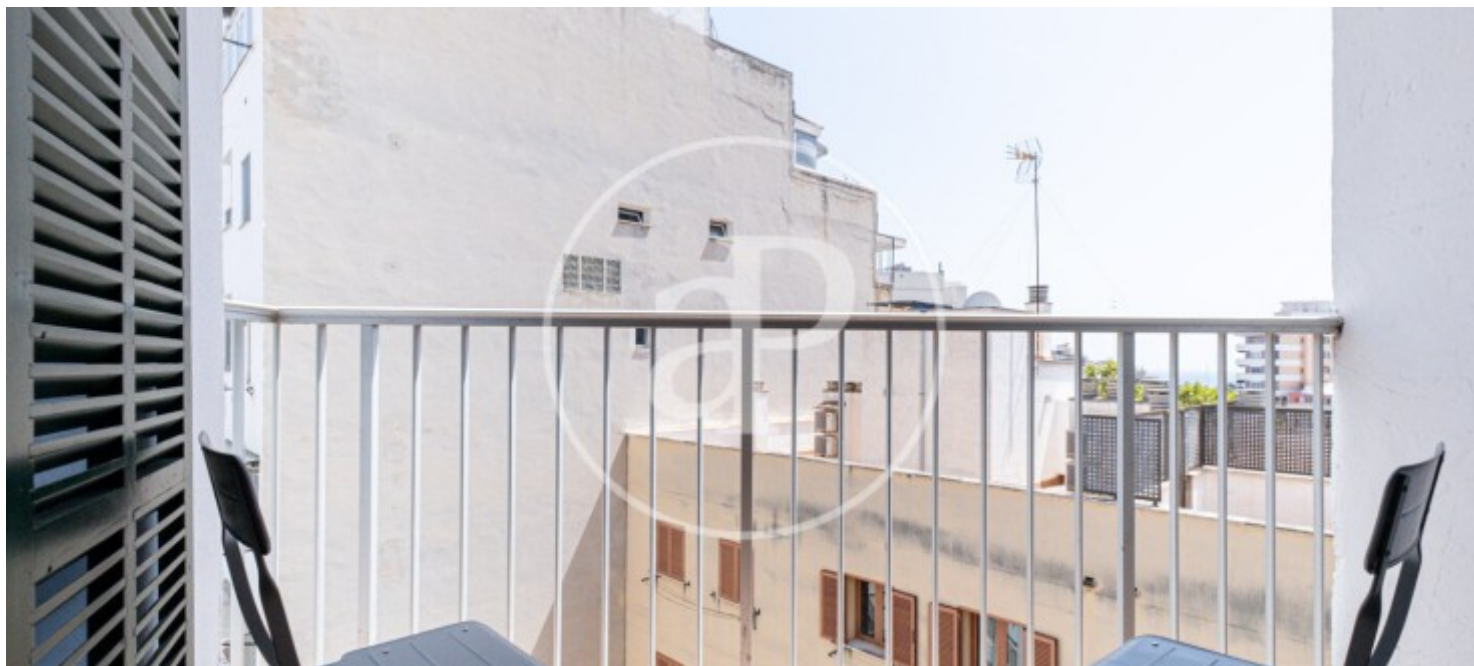
Es Fortí, Palma de Mallorca

REF. APMS2505020



Es Fortí, Palma de Mallorca

REF. APMS2505020



The information about any property is not binding to any offer or contract. Any verbal or written declaration made by aProperties with regards to the value or condition of the property should not be considered accurate or factual. The pictures make reference to some parts of the property at the times that they were taken. The areas, dimensions and distances that are given are approximate and should be checked by the client. The images are computer generated and are just an approximate indication of the real appearance of the property; these may change at any time. The information with regards to the property may also change at any time.

For **more information** or
to make an appointment

apropertiespalma@aproperties.es
Tel: 871 16 01 60
www.aproperties.es