

Es Fortí, Palma de Mallorca

REF. APM2511005

# Flat for rent in Es Fortí

## Features

- ✓ Heating
- ✓ AACC
- ✓ Lift
- ✓ Furnished
- ✓ Terrace
- ✓ Has parking

Price  
**3,200 €**

Surface  
**159 m<sup>2</sup>**

Bedrooms  
**3**

Bathrooms  
**2**



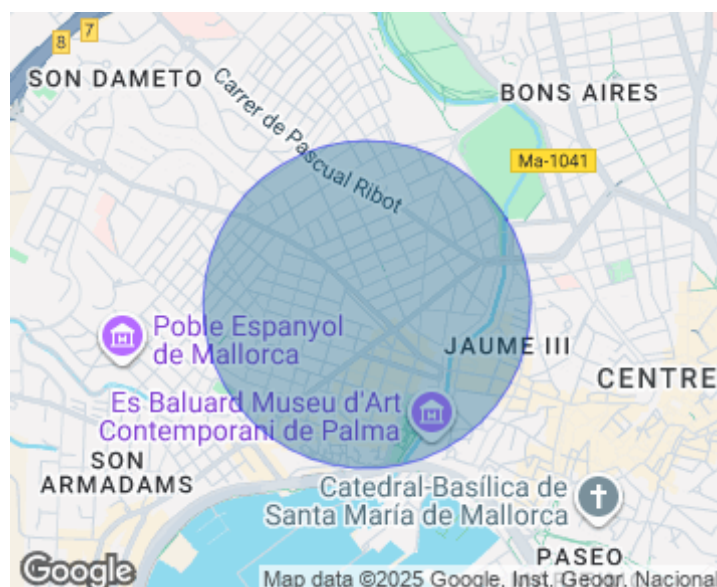
We present this exclusive 159 m<sup>2</sup> apartment located in one of Palma's most sought-after areas, just steps from the emblematic Santa Catalina neighborhood, renowned for its vibrant atmosphere, culinary offerings, and proximity to the seafront promenade. This magnificent, bright, and airy apartment boasts a classic style and elegant décor, combining fine materials, timeless design details, and a warm and sophisticated ambiance. The apartment features three spacious bedrooms and two full bathrooms, as well as a large living-dining room with expansive windows that flood the space with natural light and open onto a beautiful private terrace, ideal for enjoying the Mediterranean climate and pleasant city views. The fully equipped kitchen blends functionality with traditional charm, offering a

comfortable and practical space for everyday living. The property also includes a parking space in the price, a particularly valued feature in this central area of Palma. Its location, near the Santa Catalina neighborhood and the historic center, allows you to enjoy all the amenities, shops, restaurants, and leisure areas without sacrificing the tranquility of a well-established residential area. Can you imagine living here?

**Contact us,**  
we will be happy to assist you,  
to offer you more details and information.

Es Fortí, Palma de Mallorca

REF. APM2511005





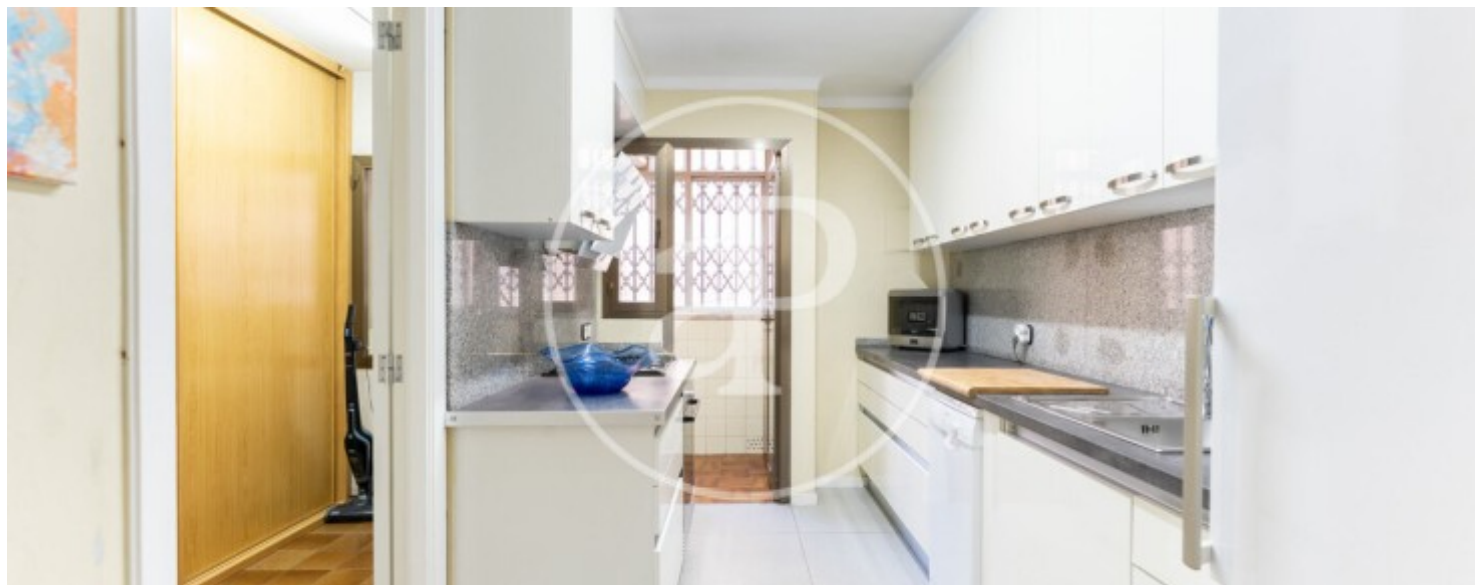
Es Fortí, Palma de Mallorca

REF. APM2511005



Es Fortí, Palma de Mallorca

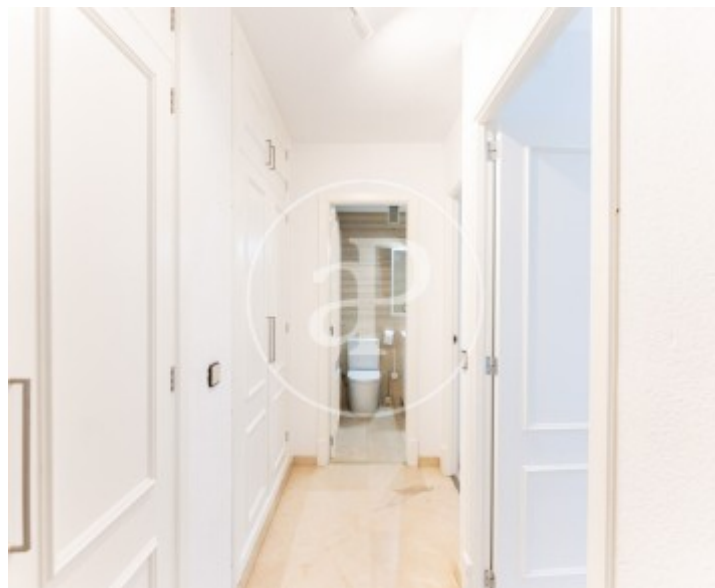
REF. APM2511005





Es Fortí, Palma de Mallorca

REF. APM2511005



The information about any property is not binding to any offer or contract. Any verbal or written declaration made by aProperties with regards to the value or condition of the property should not be considered accurate or factual. The pictures make reference to some parts of the property at the times that they were taken. The areas, dimensions and distances that are given are approximate and should be checked by the client. The images are computer generated and are just an approximate indication of the real appearance of the property; these may change at any time. The information with regards to the property may also change at any time.

For **more information** or  
to make an appointment

[apropertiespalma@aproperties.es](mailto:apropertiespalma@aproperties.es)  
Tel: 871 16 01 60  
[www.aproperties.es](http://www.aproperties.es)