

Es Fortí, Palma de Mallorca

REF. APM2606027

# Apartment for Rent in Es Fortí

## Features

Surface

**116 m<sup>2</sup>**

Bedrooms

**2**

Bathroom

**1**

✓ Furnished

✓ AACC

Price

**1,950 €**



## RENTAL SUBJECT TO INVOICE + VAT.

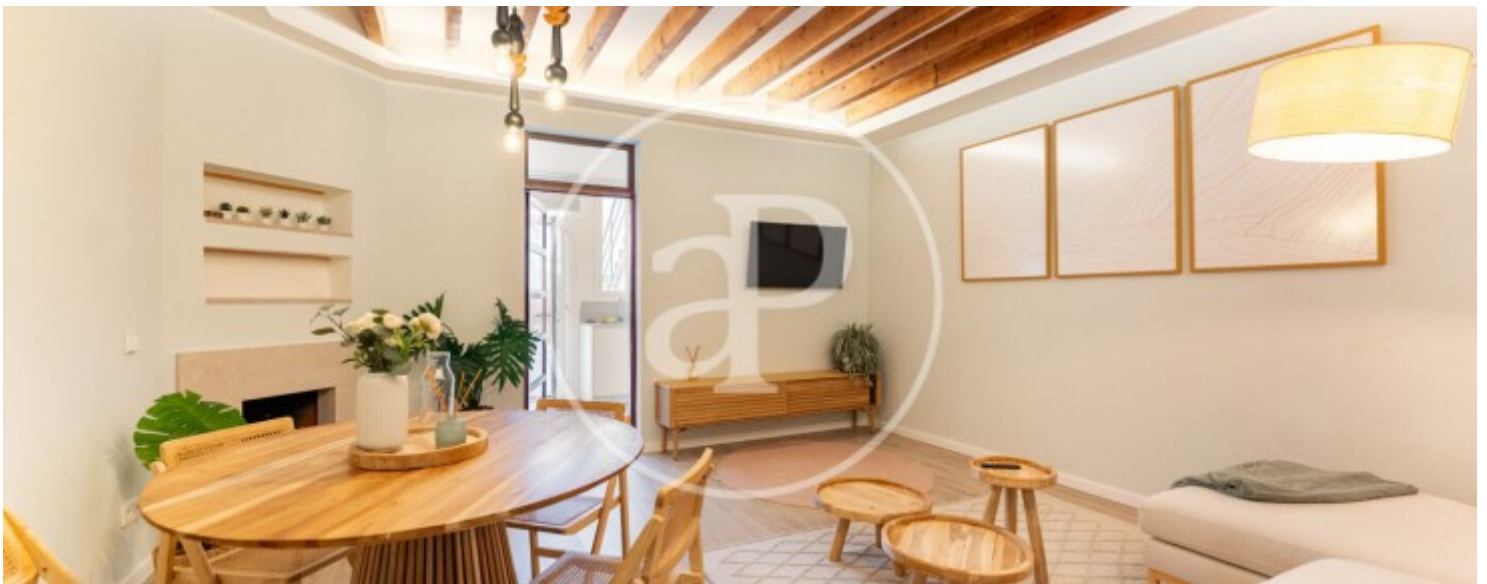
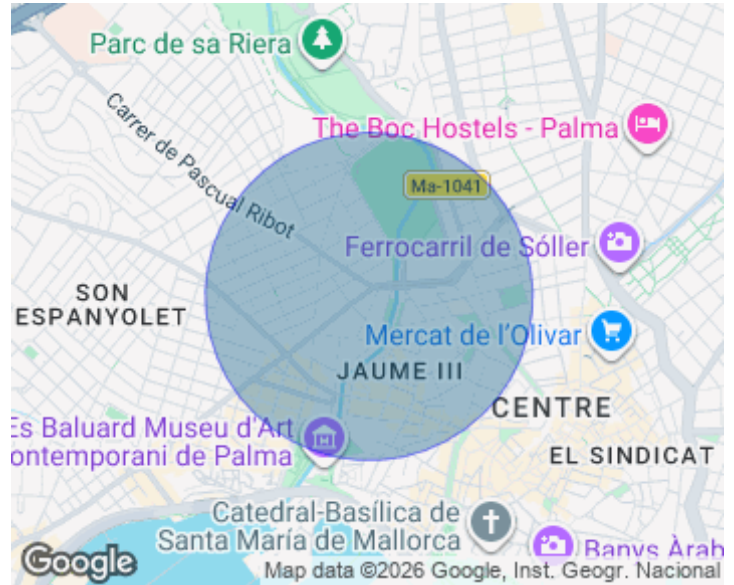
This beautifully renovated apartment is ready for its first occupants and is located in Camp d'en Serralta, one of Palma's most sought-after and well-connected neighbourhoods. Offering 116 m<sup>2</sup> of built area, the property features two rooms (one currently arranged as a home office), one bathroom and an impressive private interior terrace of approximately 30 m<sup>2</sup>. It is rented fully furnished and equipped, ready to move into. Upon entering, a welcoming entrance hall leads into a bright open-plan living and dining area connected to a modern fully equipped kitchen fitted with high-quality appliances. The spacious private terrace

extends the living area, creating the perfect space for breakfast, working from home, relaxing or enjoying outdoor living in complete privacy. The sleeping area comprises a generous double bedroom with built-in wardrobes and a second room currently designed as an office, ideal as a workspace or guest room, although it is not intended as a main bedroom. The contemporary bathroom features a large walk-in shower and premium finishes. The apartment has been completely renovated and includes PVC double-glazed windows, three hot and cold air-conditioning units, an elegant decorative fireplace and...

**Contact us,**  
we will be happy to assist you,  
to offer you more details and information.

Es Fortí, Palma de Mallorca

REF. APM2606027



Es Fortí, Palma de Mallorca

REF. APM2606027



Es Fortí, Palma de Mallorca

REF. APM2606027



Es Fortí, Palma de Mallorca

REF. APM2606027



The information about any property is not binding to any offer or contract. Any verbal or written declaration made by aProperties with regards to the value or condition of the property should not be considered accurate or factual. The pictures make reference to some parts of the property at the times that they were taken. The areas, dimensions and distances that are given are approximate and should be checked by the client. The images are computer generated and are just an approximate indication of the real appearance of the property; these may change at any time. The information with regards to the property may also change at any time.

For **more information** or  
to make an appointment

[apropertiespalma@aproperties.es](mailto:apropertiespalma@aproperties.es)  
Tel: 871 16 01 60  
[www.aproperties.es](http://www.aproperties.es)