

Es Fortí, Palma de Mallorca

REF. VPM2506001

Apartment for Sale in Plaza Madrid

Features

- ✓ Views
- ✓ AACC
- ✓ Lift
- ✓ Has parking
- ✓ Heating
- ✓ Terrace
- ✓ Concierge

Surface

115 m²

Bedrooms

3

Bathrooms

2

Price

595,000 €



Wonderful apartment with a terrace accessible from both the living room and the master bedroom.

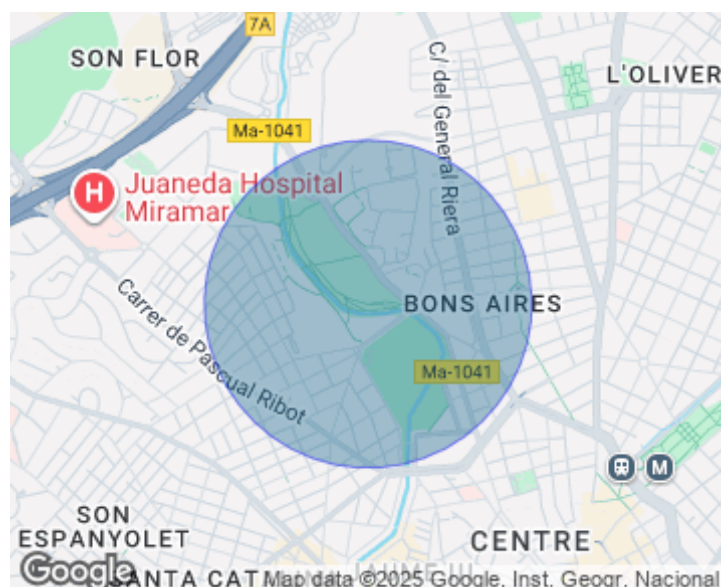
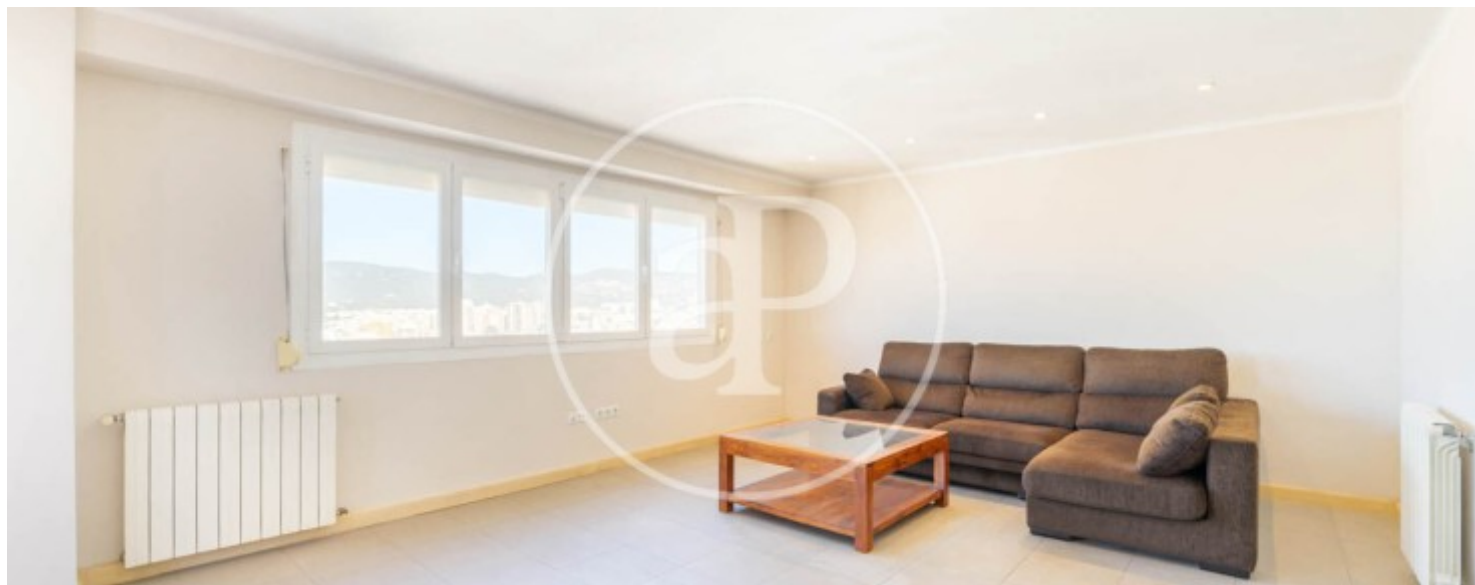
The property features an entrance hall with a large built-in closet, leading to a bright living room with access to the terrace — the crown jewel of the home. The living room is filled with natural light thanks to the large windows. Next is a functional kitchen, fully equipped with furniture and all necessary appliances. The kitchen and living room are separate, but they could easily be joined. The hallway leads to the sleeping area, consisting of 3 spacious bedrooms and 2 full bathrooms. The master bedroom also has access to the terrace. All three bedrooms include

built-in wardrobes. The property includes a parking space in the Plaza Madrid garage. There is also the option to purchase an additional parking space in the same garage. The views from the terrace are stunning, given the strategic location of the area, offering a sense of space and depth. You can see the entire city, including a clear view of Palma Cathedral. The narrow streets of the old town and nearby plazas are also visible. You'll enjoy the sweeping view of the bay, shaped like a crescent and surrounded by the city of Palma and its surroundings. The Plaza Madrid area in Palma...

Contact us,
we will be happy to assist you,
to offer you more details and information.

Es Fortí, Palma de Mallorca

REF. VPM2506001



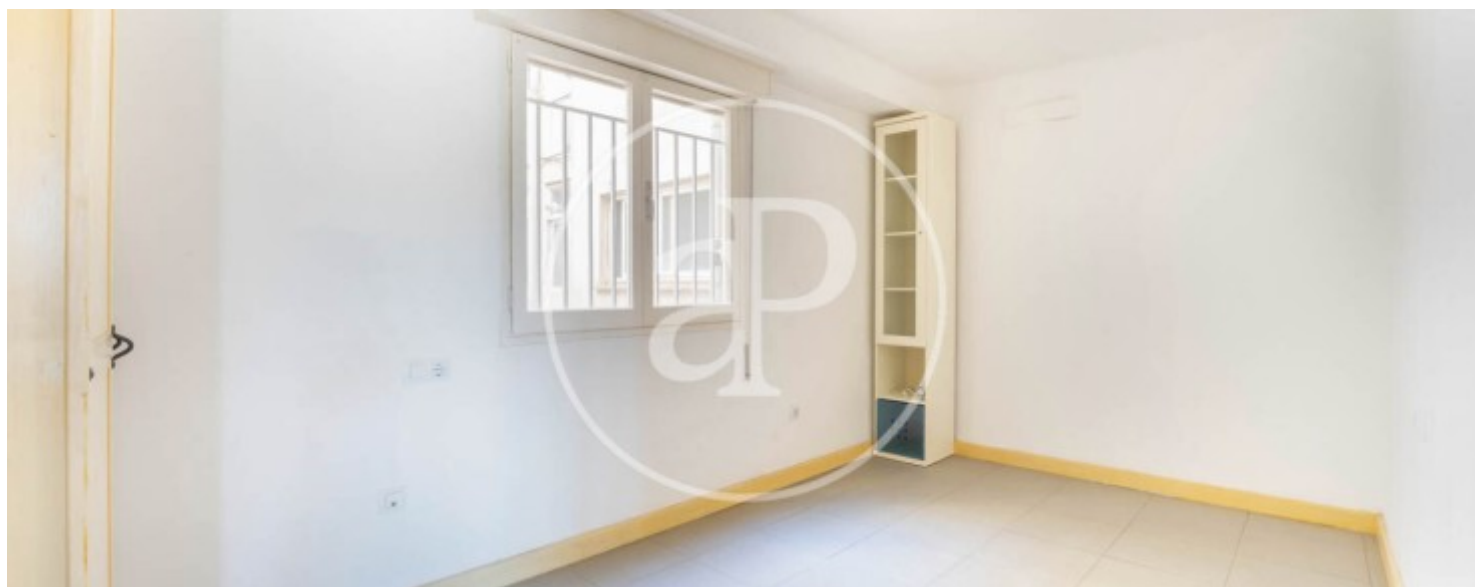
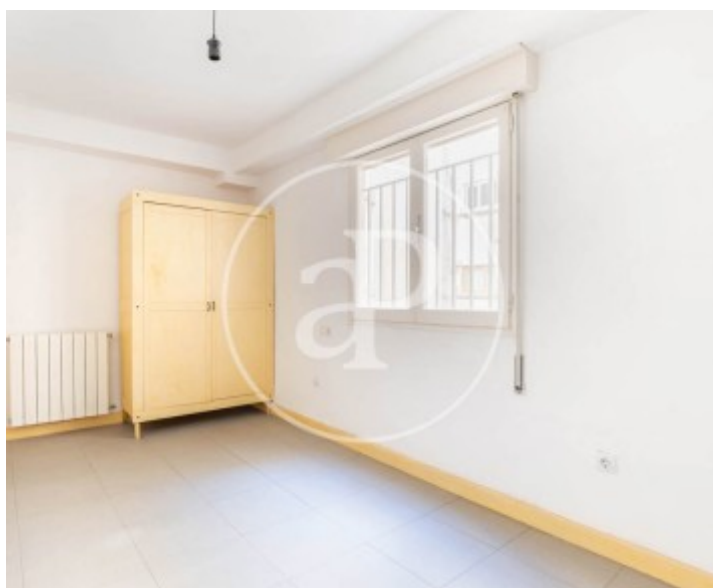
Es Fortí, Palma de Mallorca

REF. VPM2506001



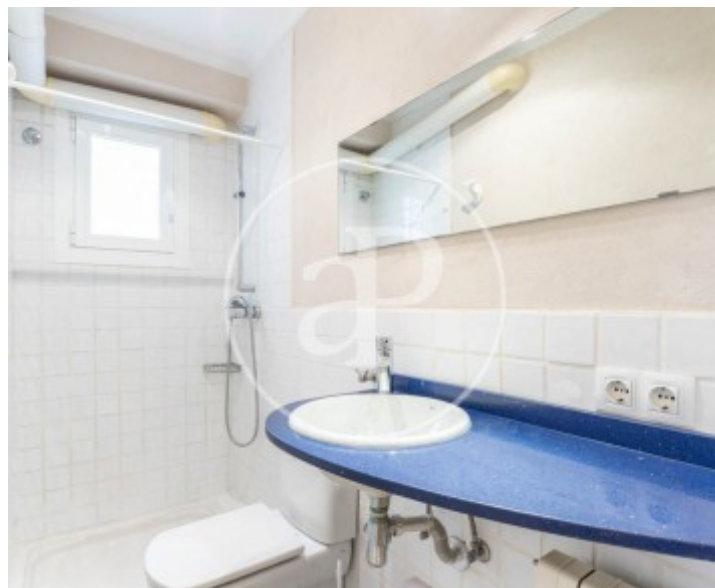
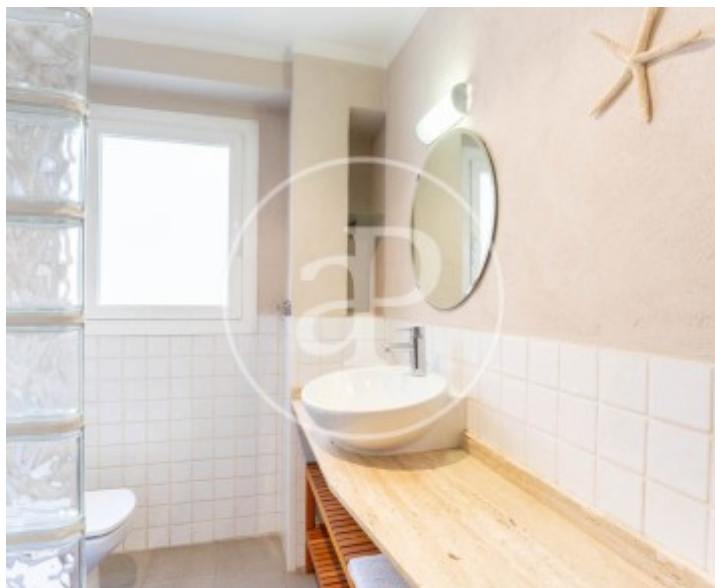
Es Fortí, Palma de Mallorca

REF. VPM2506001



Es Fortí, Palma de Mallorca

REF. VPM2506001



The information about any property is not binding to any offer or contract. Any verbal or written declaration made by aProperties with regards to the value or condition of the property should not be considered accurate or factual. The pictures make reference to some parts of the property at the times that they were taken. The areas, dimensions and distances that are given are approximate and should be checked by the client. The images are computer generated and are just an approximate indication of the real appearance of the property; these may change at any time. The information with regards to the property may also change at any time.

For **more information** or
to make an appointment

apropertiespalma@aproperties.es
Tel: 871 16 01 60
www.aproperties.es