

El Terreno, Palma de Mallorca

REF. VPM2204006



## Semi-detached villa for sale in El Terreno

### Features

- ✓ Views
- ✓ AACC
- ✓ Backyard
- ✓ Boxroom
- ✓ Terrace
- ✓ Has parking

Price

**1,725,000 €**

Surface

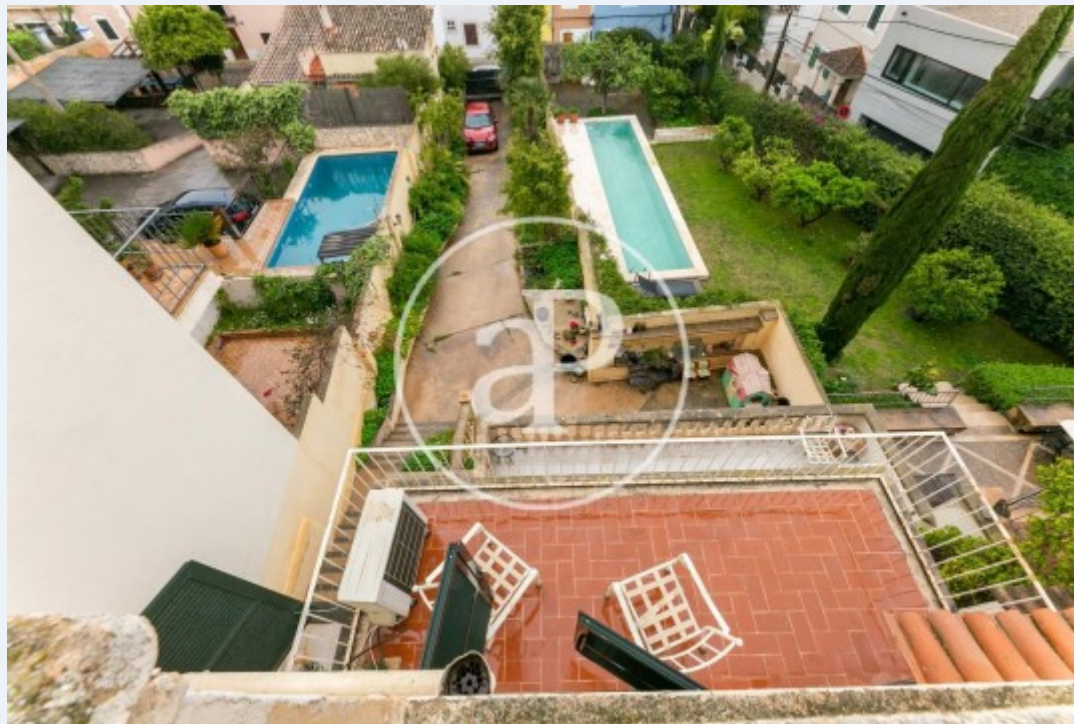
**234 m<sup>2</sup>**

Bedrooms

**6**

Bathrooms

**4**



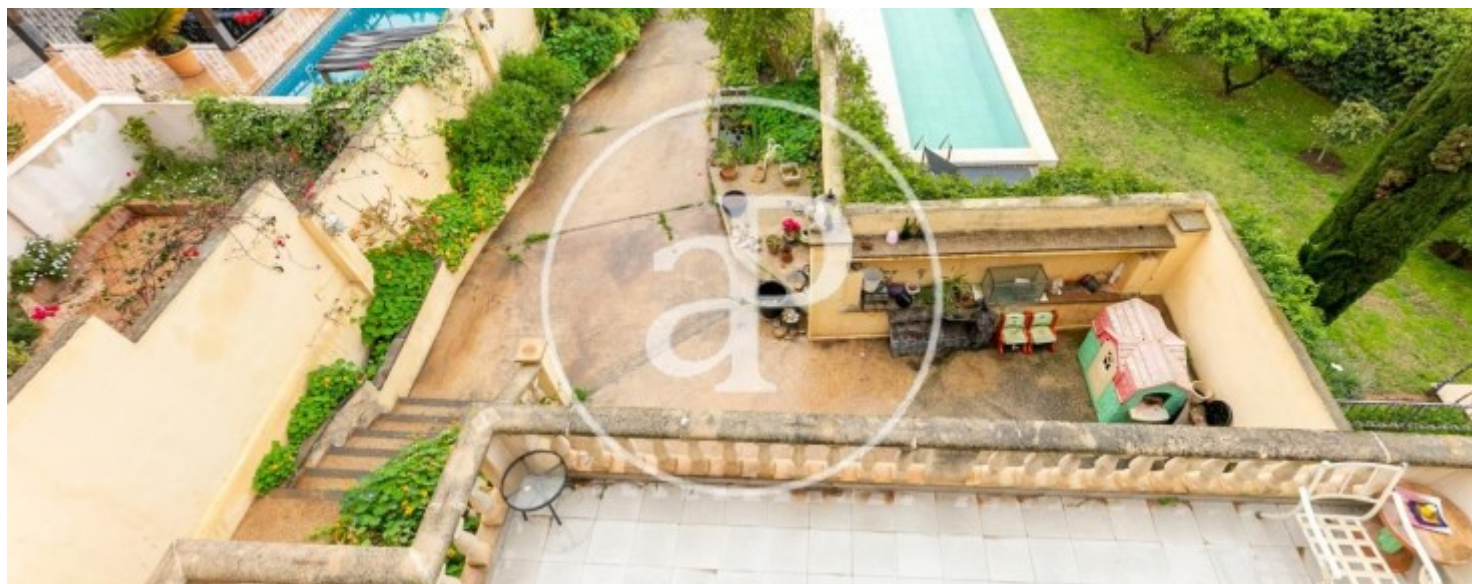
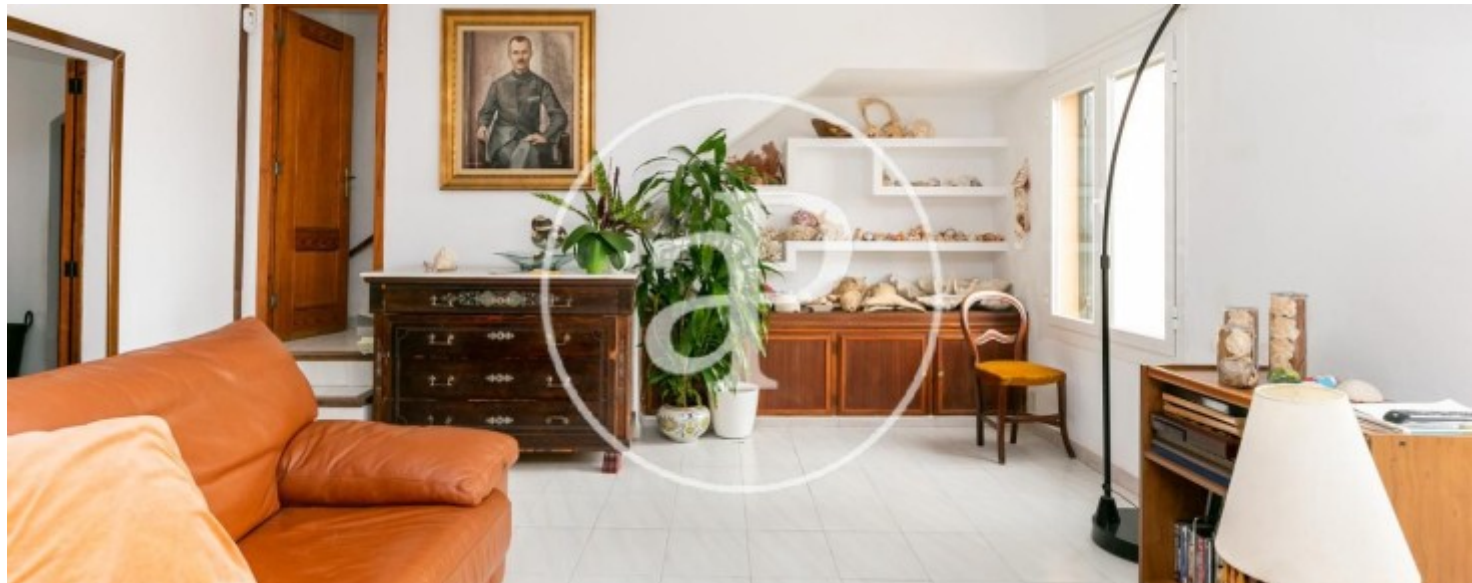
This fabulous south-east facing residence, with facade on two streets and an extraordinary potential and even the possibility to install a swimming pool, stands on a plot of 336 sqm with 225 sqm built on four floors, each one of them with its own charm. On the ground floor there is access from the street to the garage door, garden space, parking for up to three vehicles and a multi-purpose room, as well as the possibility of adding a toilet. The main floor houses the large living room, spacious and bright thanks to its large windows with aluminium carpentry and Climalit thermal and acoustic insulation, and a fireplace, access to a wonderful terrace with views of the bay and the atmosphere of the neighbourhood with the sea as a backdrop, picturesque colourful houses, narrow stone streets that transport

you to yesteryear and the fragrance of flowers and colourful vines that bring peace, joy and calm. On the same floor, there is also a charming fitted kitchen with the same beautiful views, three double bedrooms and a bathroom with bathtub. On the first floor, with a similar distribution to the main floor, there is a spectacular and luminous living room with access to the terrace, a perfect kitchen that could be updated maintaining some details, a complete bathroom with shower and three double bedrooms, one of them with a space that could be used as a dressing room. All bedrooms are exterior...

**Contact us,**  
we will be happy to assist you,  
to offer you more details and information.

El Terreno, Palma de Mallorca

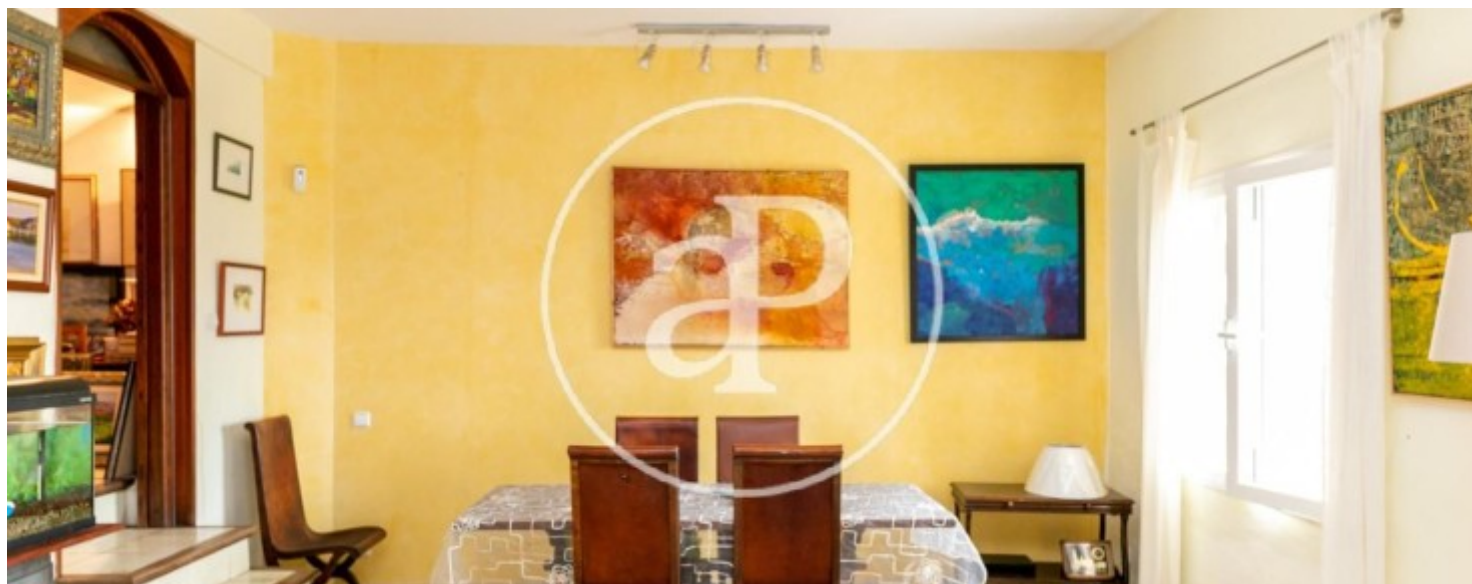
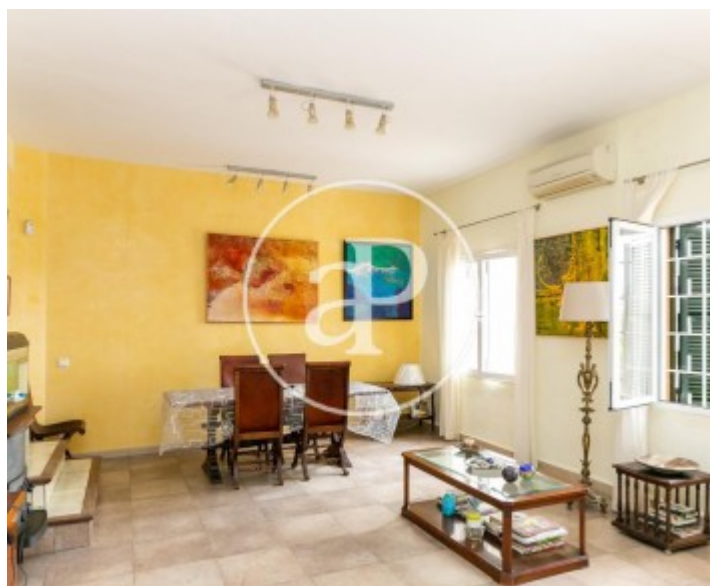
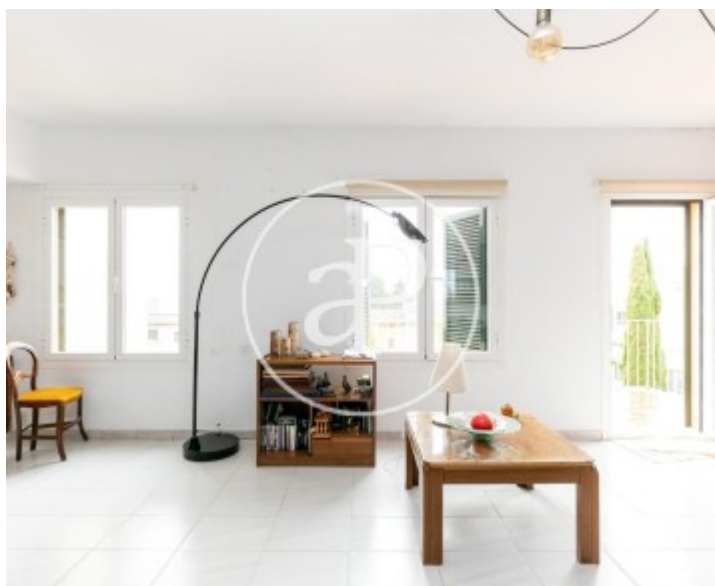
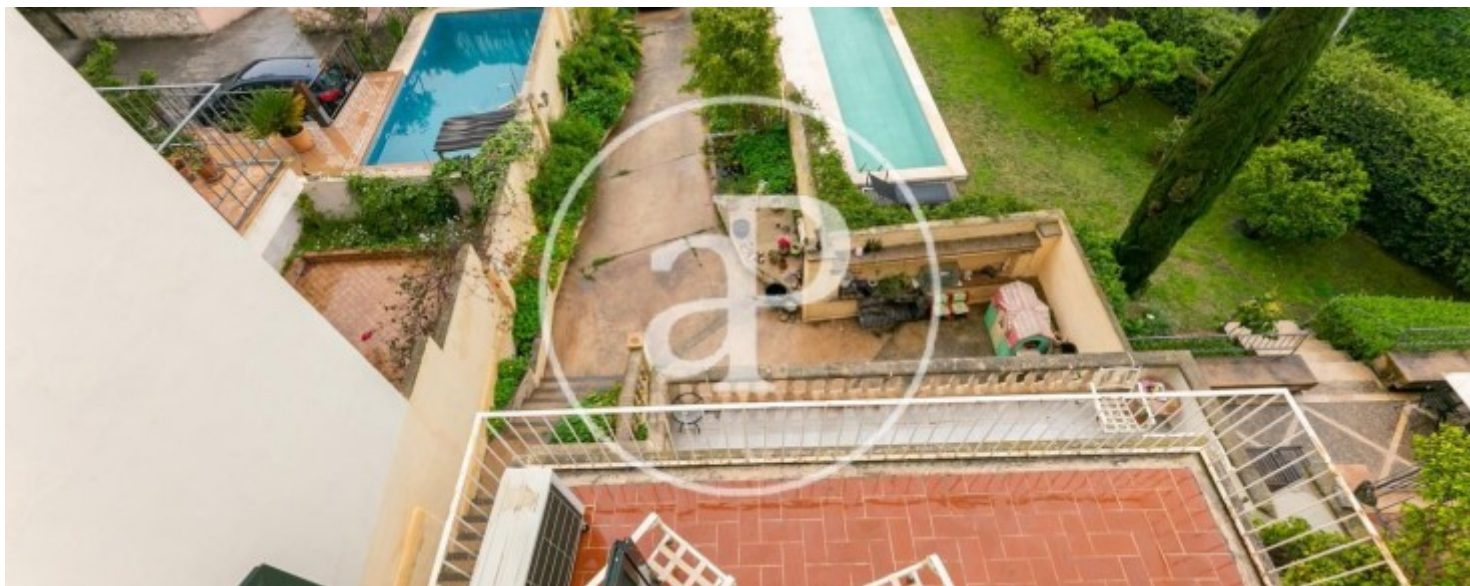
REF. VPM2204006





El Terreno, Palma de Mallorca

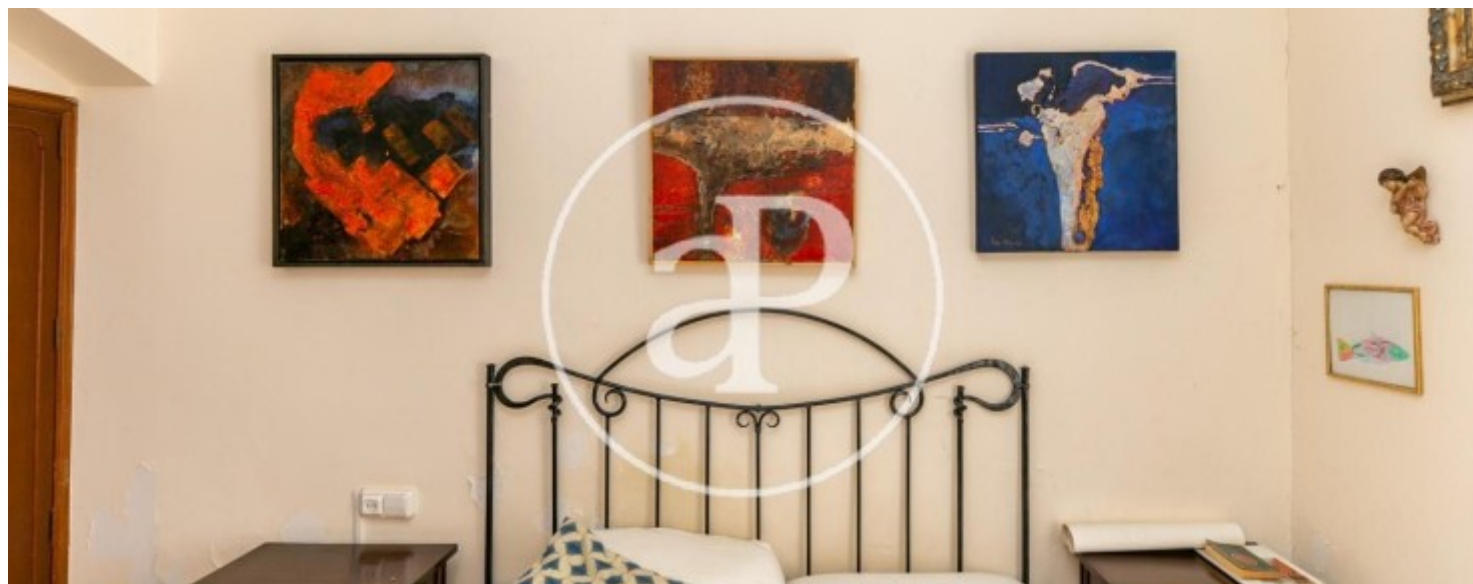
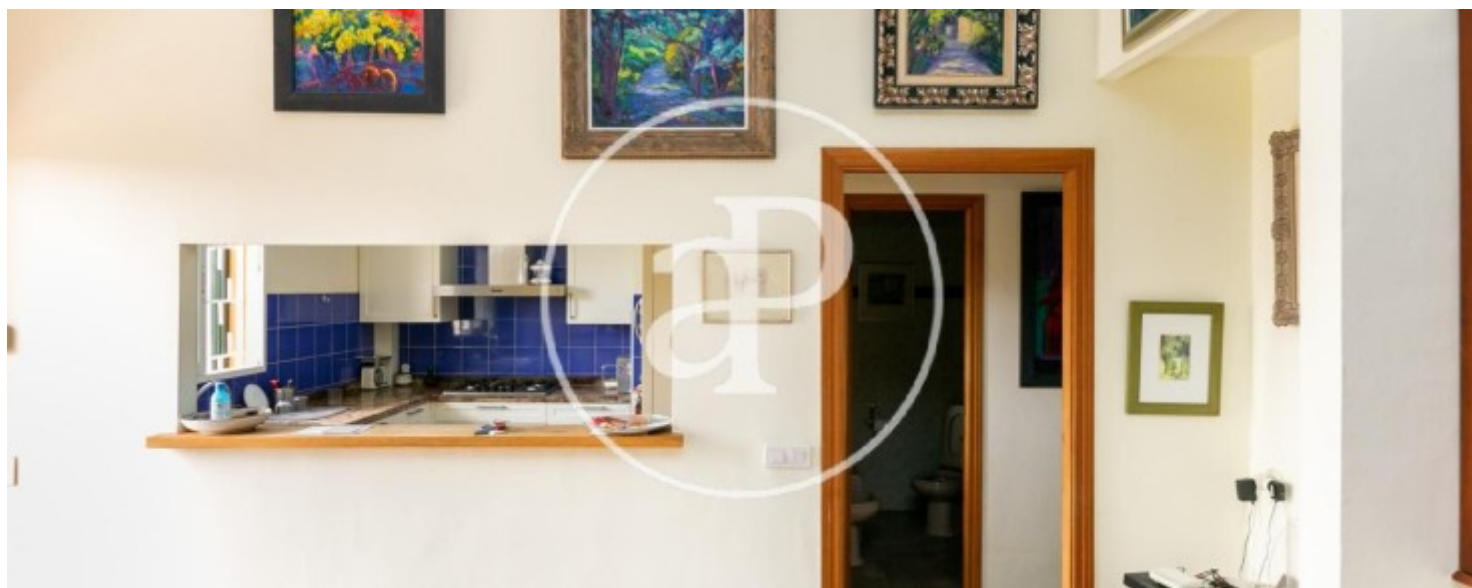
REF. VPM2204006





El Terreno, Palma de Mallorca

REF. VPM2204006



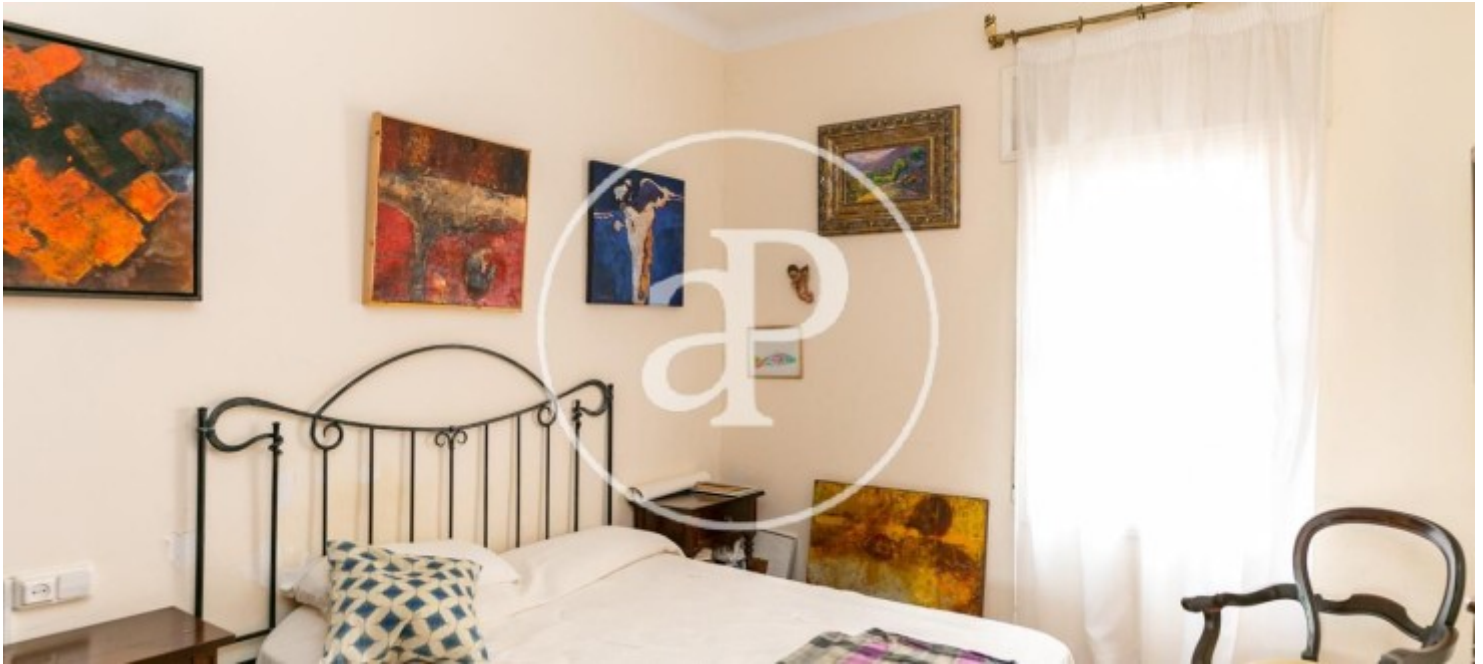


**APROPERTIES**  
REAL ESTATE

Calle Unió 9  
07001 Palma  
T. 871 16 01 60  
[www.aproperties.es](http://www.aproperties.es)

El Terreno, Palma de Mallorca

REF. VPM2204006



The information about any property is not binding to any offer or contract. Any verbal or written declaration made by aProperties with regards to the value or condition of the property should not be considered accurate or factual. The pictures make reference to some parts of the property at the times that they were taken. The areas, dimensions and distances that are given are approximate and should be checked by the client. The images are computer generated and are just an approximate indication of the real appearance of the property; these may change at any time. The information with regards to the property may also change at any time.



For **more information** or  
to make an appointment

[apropertiespalma@aproperties.es](mailto:apropertiespalma@aproperties.es)  
Tel: 871 16 01 60  
[www.aproperties.es](http://www.aproperties.es)