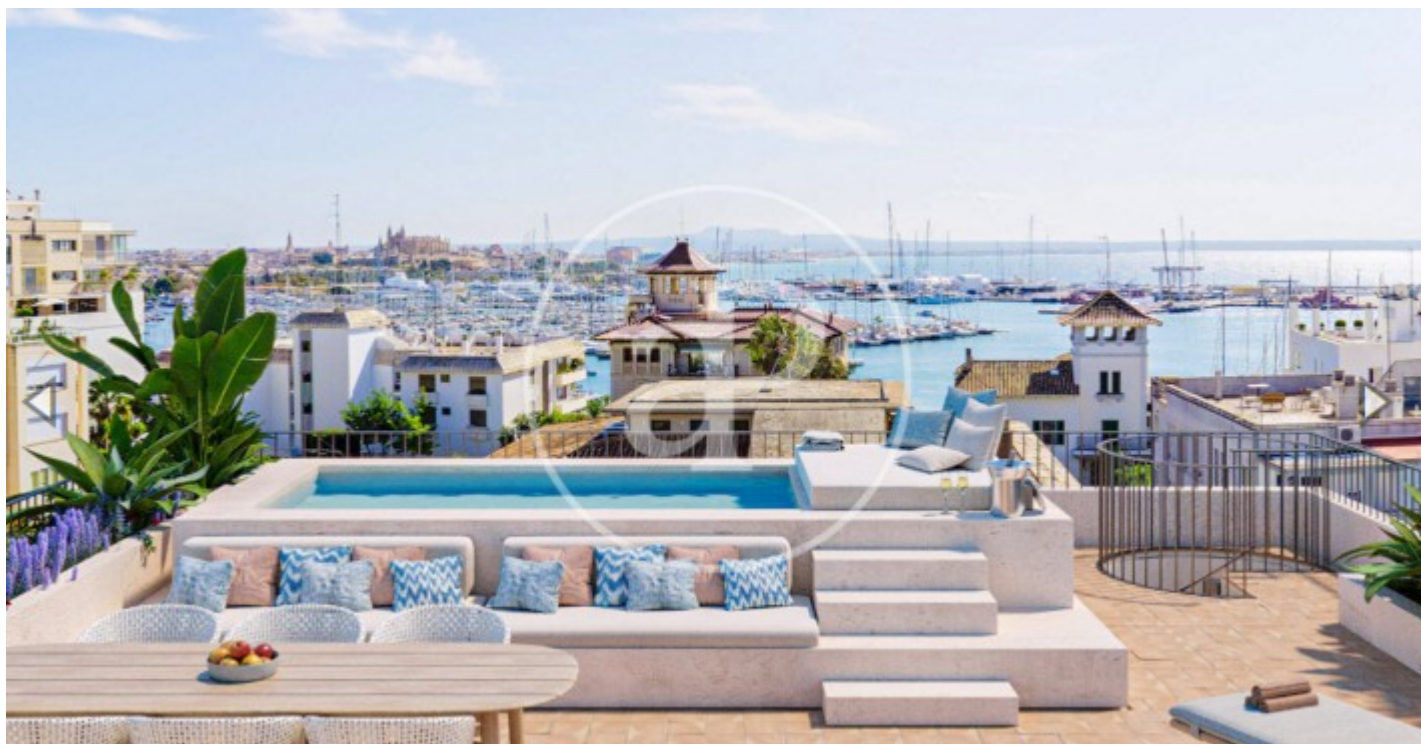


(El Terreno)

Ref: ONPM2312001



New development for sale in El Terreno

Exclusive high standing flats in El Terreno. Discover housing excellence with our luxury new build flats in the sought-after area of El Terreno. This enclave, particularly popular with the Nordic community, offers you the opportunity to live in an exclusive, high-demand location. Outstanding Features: Exceptional Design: Experience a unique lifestyle with a modern and elegant design. Large windows flood every space with natural light, creating a bright and welcoming atmosphere. Practical Layout: Each floor plan has only two floors, ensuring privacy and comfort. Enjoy two or three bedroom options, with elegant en-suites and full bathrooms. Kitchens are integrated into the living room, with access to spacious terraces and balconies to enjoy the outdoors. Unique outdoor spaces: The ground floor offers private gardens, while the penthouse has a private terrace and swimming pool. Enjoy moments of relaxation and entertainment in your own personal oasis. Communal Pool: Immerse yourself in exclusivity with a communal pool that complements your luxury lifestyle. Don't miss the opportunity to be part of this unique experience. Contact us now for more information and to secure your place in this unique project. We look forward to hearing from you!

Palma de Mallorca / El Terreno

Unit 3

Completion Q3 2024

FEATURES

Surface 364 m² / 220 m² terrace

3 Rooms

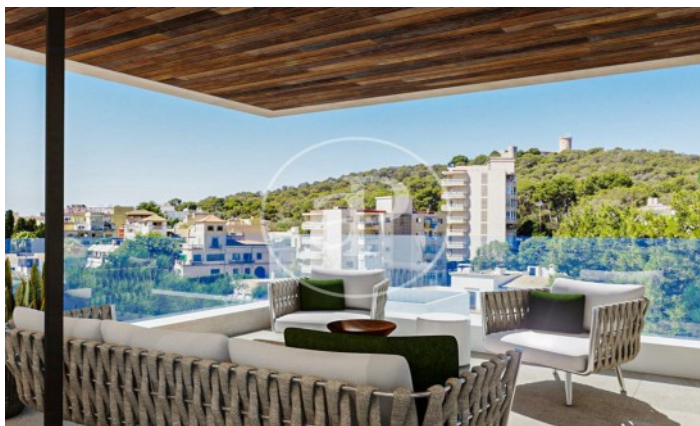
2 Toilets 1 Restrooms

- ✓ Views
- ✓ Heating
- ✓ Boxroom
- ✓ AACC
- ✓ Terrace
- ✓ Backyard
- ✓ Pool
- ✓ Lift
- ✓ Has parking

Price 2,600,000 €

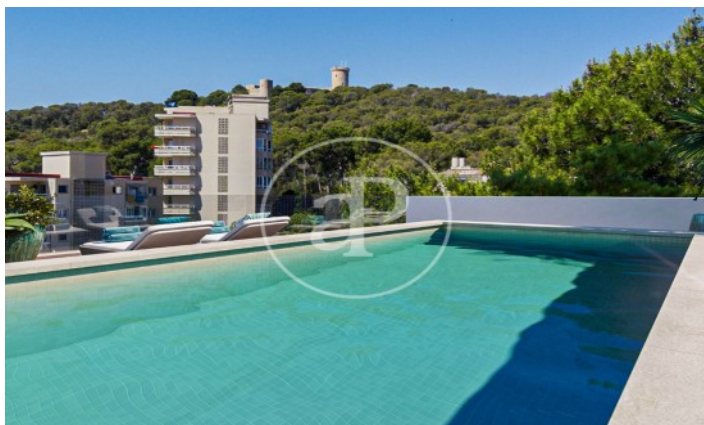
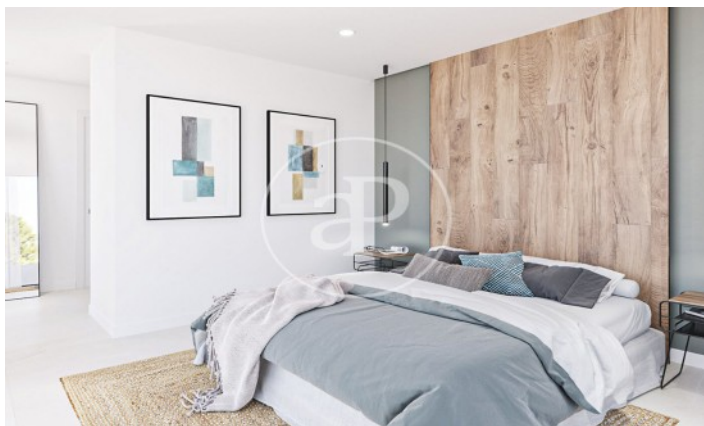
(El Terreno)

Ref: ONPM2312001



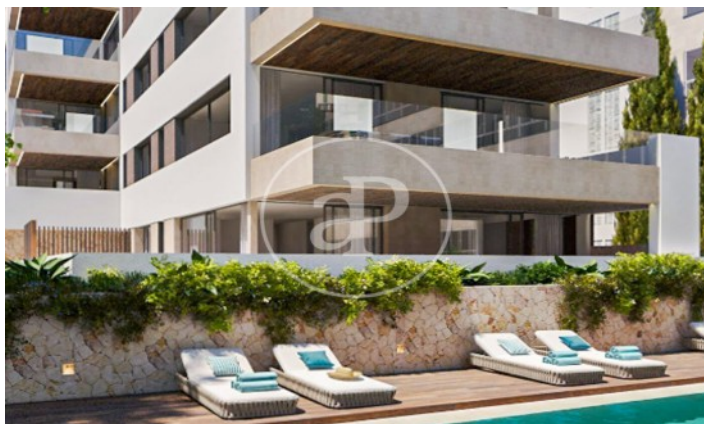
(El Terreno)

Ref: ONPM2312001



(El Terreno)

Ref: ONPM2312001



The information about any property is not binding to any offer or contract. Any verbal or written declaration made by aProperties with regards to the value or condition of the property should not be considered accurate or factual. The pictures make reference to some parts of the property at the times that they were taken. The areas, dimensions and distances that are given are approximate and should be checked by the client. The images are computer generated and are just an approximate indication of the real appearance of the property; these may change at any time. The information with regards to the property may also change at any time.

Contact us today for more information or to arrange a viewing

Tel: 871 16 01 60

apropertiespalma@aproperties.es

<https://www.aproperties.es>