



(El Terreno)

Ref: ONPM2501004



New development for sale in El Terreno

Exclusive high-end apartments in El Terreno Discover luxury and elegance in the heart of El Terreno with our new-built homes designed for those seeking the best. This residential enclave, highly appreciated by the Nordic community, combines style, comfort and a privileged location. Top-quality design and finishes Every detail has been carefully thought out to offer a sophisticated and welcoming atmosphere. Modern and elegant materials have been selected by interior design professionals, guaranteeing exceptional finishes. Large windows flood each room with natural light, accentuating the feeling of spaciousness and warmth. The space flows from inside to outside without limits, thanks to the large terraces and the floor plan, where the living room, kitchen and large terrace merge into a space designed to enjoy and relax. The homes are equipped with integrated and zone-adjustable air conditioning, to enjoy the perfect temperature at any time of the year. In addition, the underfloor heating system ensures maximum comfort during the colder months. Exclusivity and privacy in every corner The building has only seven homes, ensuring tranquility and privacy. Each floor houses only [...]

Palma de Mallorca / El Terreno

Unit 2 B

Completion Q3 2024

FEATURES

Surface 109 m² / 24 m² terrace

3 Rooms

2 Toilets

- ✓ Views
- ✓ Heating
- ✓ Boxroom
- ✓ AACC
- ✓ Terrace
- ✓ Backyard
- ✓ Pool
- ✓ Lift
- ✓ Has parking

Price 1,100,500 €

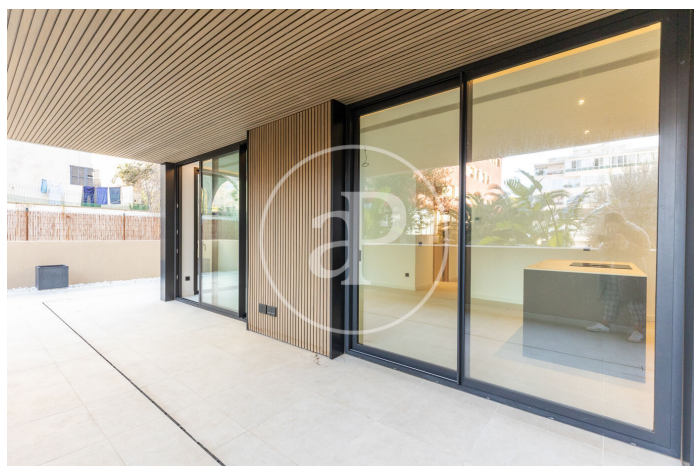
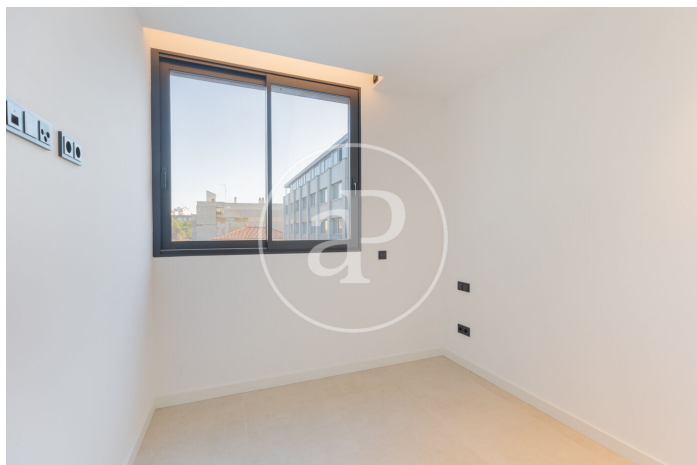
(El Terreno)

Ref: ONPM2501004



(El Terreno)

Ref: ONPM2501004





APROPERTIES
REAL ESTATE

Calle Unió 9
Tel: 871 16 01 60
<https://www.aproperties.es>

(El Terreno)

Ref: ONPM2501004



The information about any property is not binding to any offer or contract. Any verbal or written declaration made by aProperties with regards to the value or condition of the property should not be considered accurate or factual. The pictures make reference to some parts of the property at the times that they were taken. The areas, dimensions and distances that are given are approximate and should be checked by the client. The images are computer generated and are just an approximate indication of the real appearance of the property; these may change at any time. The information with regards to the property may also change at any time.

Contact us today for more information or to arrange a viewing

Tel: 871 16 01 60 apropertiespalma@aproperties.es <https://www.aproperties.es>