

El Terreno, Palma de Mallorca

REF. APMS2606025

Apartment with pool for rent in El Terreno

Features

- ✓ Views
- ✓ AACC
- ✓ Backyard
- ✓ Has parking
- ✓ Furnished
- ✓ Terrace
- ✓ Pool

Price

1,800 €

Surface

99 m²

Bedrooms

2

Bathroom

1



Located in the well-known Plaza del Mediterráneo, this stylish 65 m² ground-floor apartment offers modern and comfortable living.

The property features a spacious 30 m² private terrace with direct access to the communal swimming pool, perfect for enjoying Mallorca's Mediterranean climate. The entrance leads into a bright living and dining area decorated in soft neutral tones, creating a welcoming atmosphere. Large glass doors allow plenty of natural light and provide direct access to the terrace. A practical laundry room with additional storage space is also located in this area. The open-plan kitchen is fully furnished and equipped with modern

appliances and features a central island with two bar stools, ideal for casual meals. The sleeping area includes two bedrooms: a spacious double bedroom and a single bedroom, perfect as a home office, guest room or children's bedroom. The bathroom features a walk-in rain shower, wall-mounted sanitary fittings and an elegant wooden vanity unit. Additional features include parquet flooring, double-glazed windows, contemporary interior design, an optional parking space in a nearby building and pets are welcome. An ideal property for those seeking comfort, style and an excellent location in...

Contact us,
we will be happy to assist you,
to offer you more details and information.

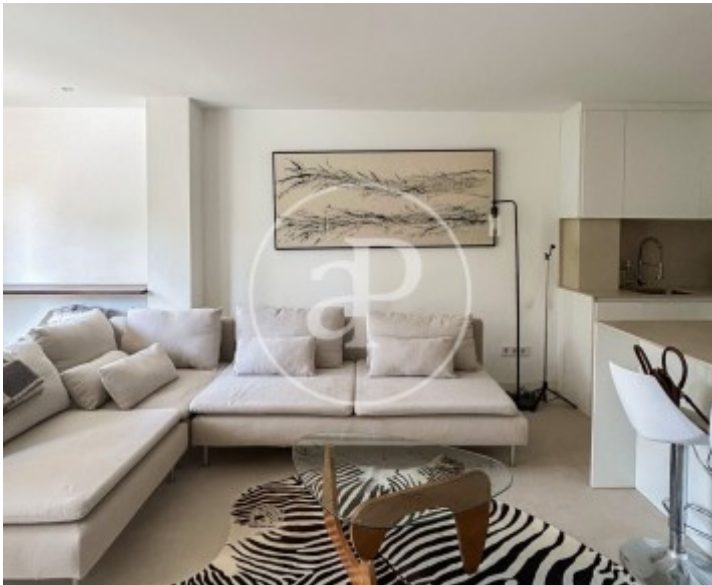
El Terreno, Palma de Mallorca

REF. APMS2606025



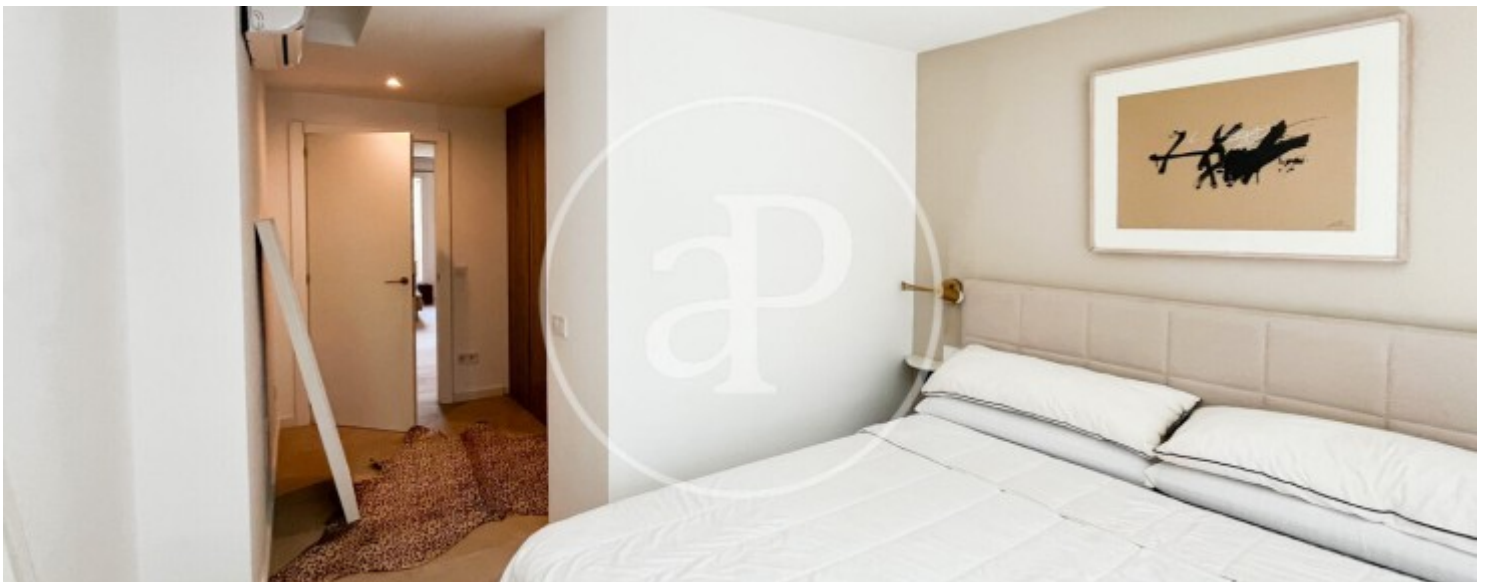
El Terreno, Palma de Mallorca

REF. APMS2606025



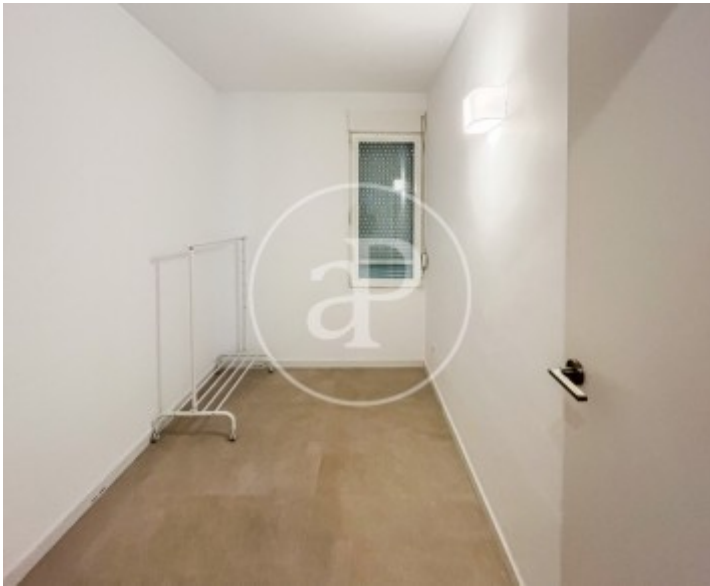
El Terreno, Palma de Mallorca

REF. APMS2606025



El Terreno, Palma de Mallorca

REF. APMS2606025



The information about any property is not binding to any offer or contract. Any verbal or written declaration made by aProperties with regards to the value or condition of the property should not be considered accurate or factual. The pictures make reference to some parts of the property at the times that they were taken. The areas, dimensions and distances that are given are approximate and should be checked by the client. The images are computer generated and are just an approximate indication of the real appearance of the property; these may change at any time. The information with regards to the property may also change at any time.

For **more information** or
to make an appointment

apropertiespalma@aproperties.es
Tel: 871 16 01 60
www.aproperties.es