

El Terreno, Palma de Mallorca

REF. APM2512006

# Apartment for rent in El Terreno

## Features

- ✓ Heating
- ✓ Terrace
- ✓ Concierge
- ✓ AACC
- ✓ Gym

Surface

**92 m<sup>2</sup>**

Bedrooms

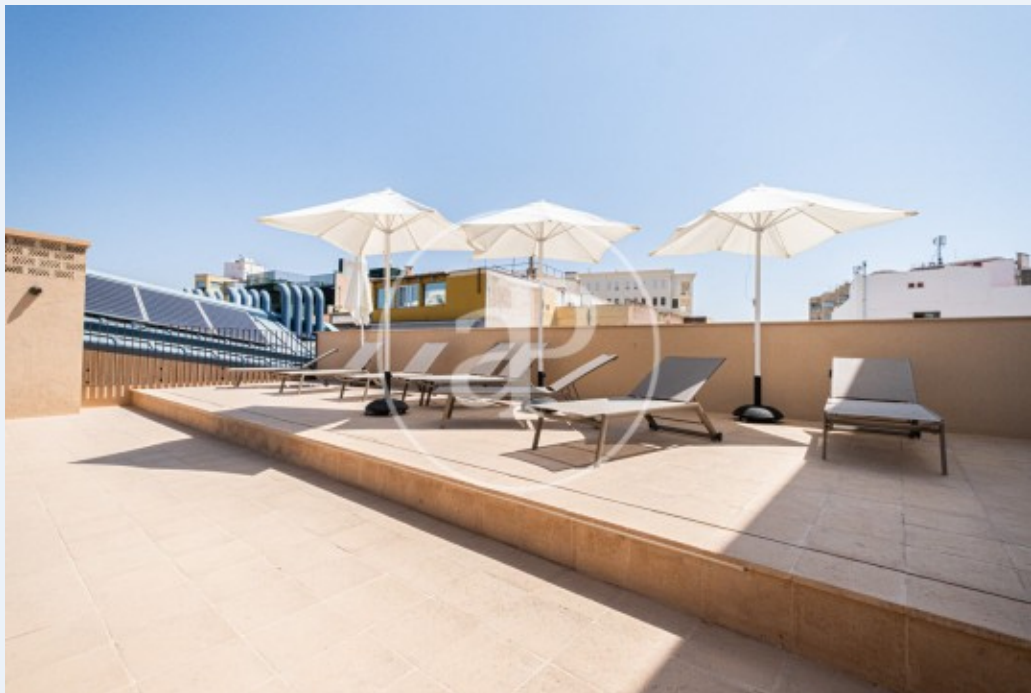
**2**

Bathrooms

**2**

Price

**2,700 €**



**In the historic neighbourhood of El Terreno, we find this 92 m<sup>2</sup> apartment with a large 62 m<sup>2</sup> terrace.**

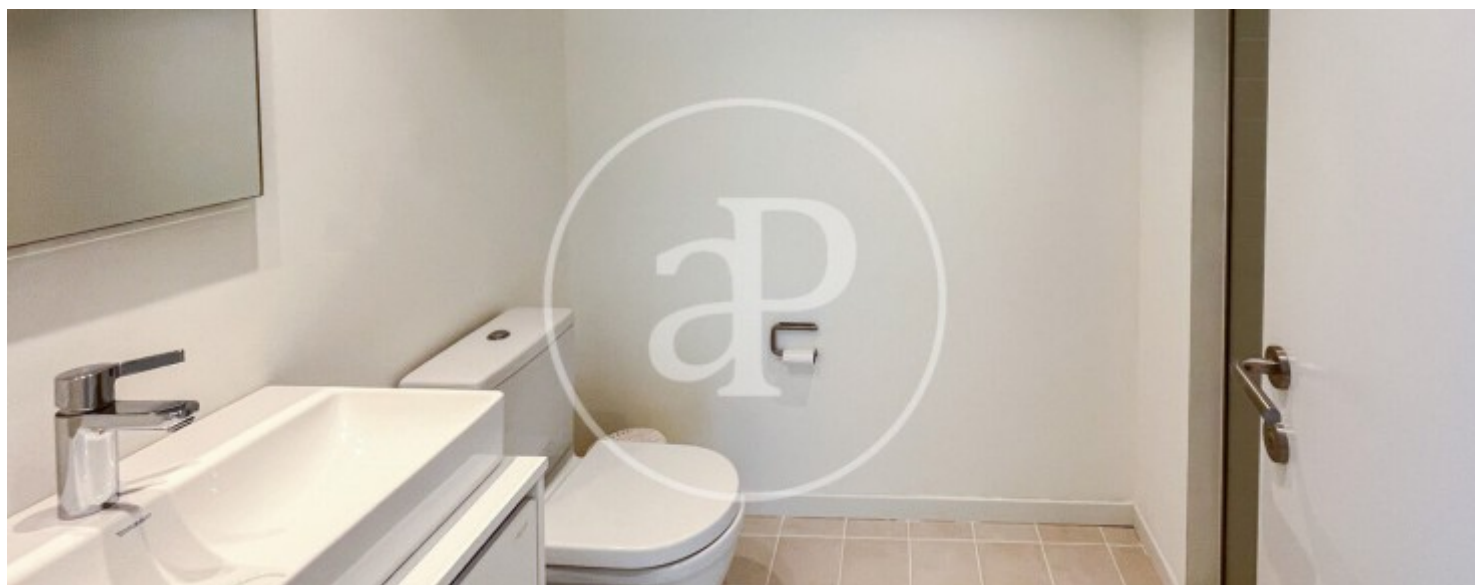
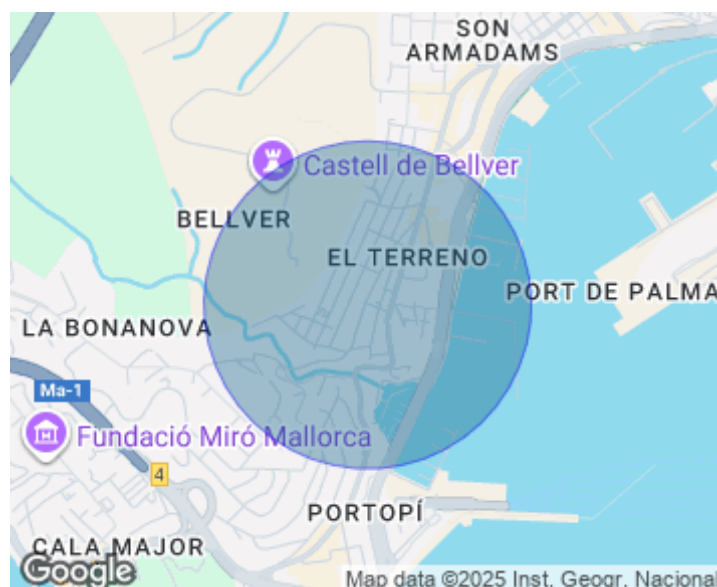
The project has been carried out by the renowned architectural studios MRVDV from the Netherlands and GRAS from Mallorca. From the entrance door to the property and through a hallway, we access a spacious and bright living-dining room with large windows that provide natural light throughout the entire day and offer direct access to the terrace. The open-plan kitchen is fully furnished and equipped. The night area consists of 2 double bedrooms with built-in wardrobes and two bathrooms with walk-in showers, one of them en suite. In this same area, we also

find the laundry space. Notable features include high-quality finishes, sustainable construction materials, aerothermal system, underfloor heating, parquet flooring, double-glazed windows and built-in wardrobes in the entrance hall. The rental includes access to the swimming pool and the gym. There is also the option to rent a parking space. Pets are allowed. The neighbourhood of El Terreno, one of the most authentic in Palma, is regaining its splendour thanks to the new Gomila project, featuring first-class homes and buildings. Excellent location, surrounded by new restaurants,...

**Contact us,**  
we will be happy to assist you,  
to offer you more details and information.

El Terreno, Palma de Mallorca

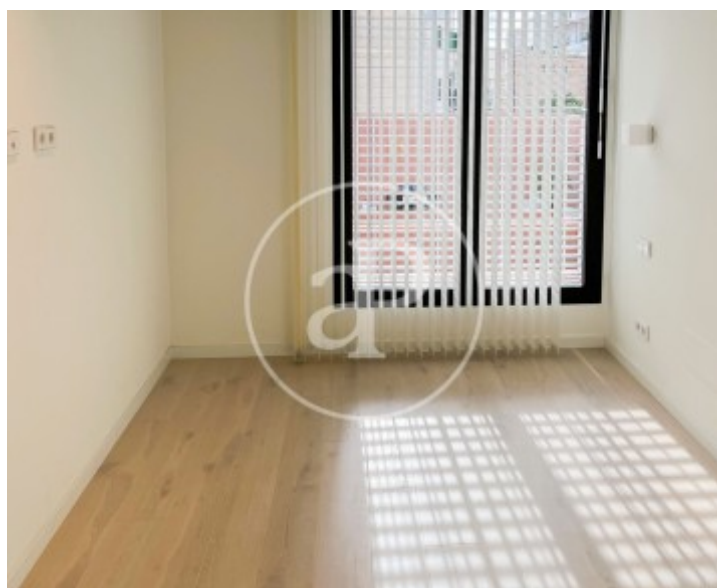
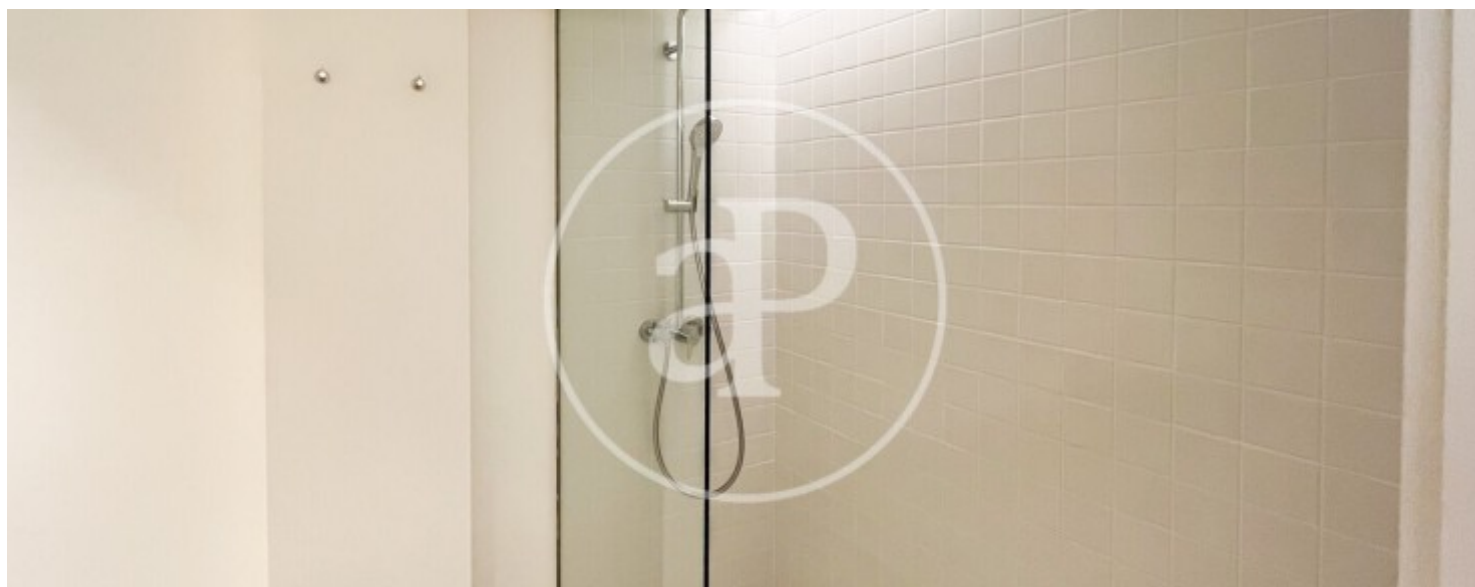
REF. APM2512006





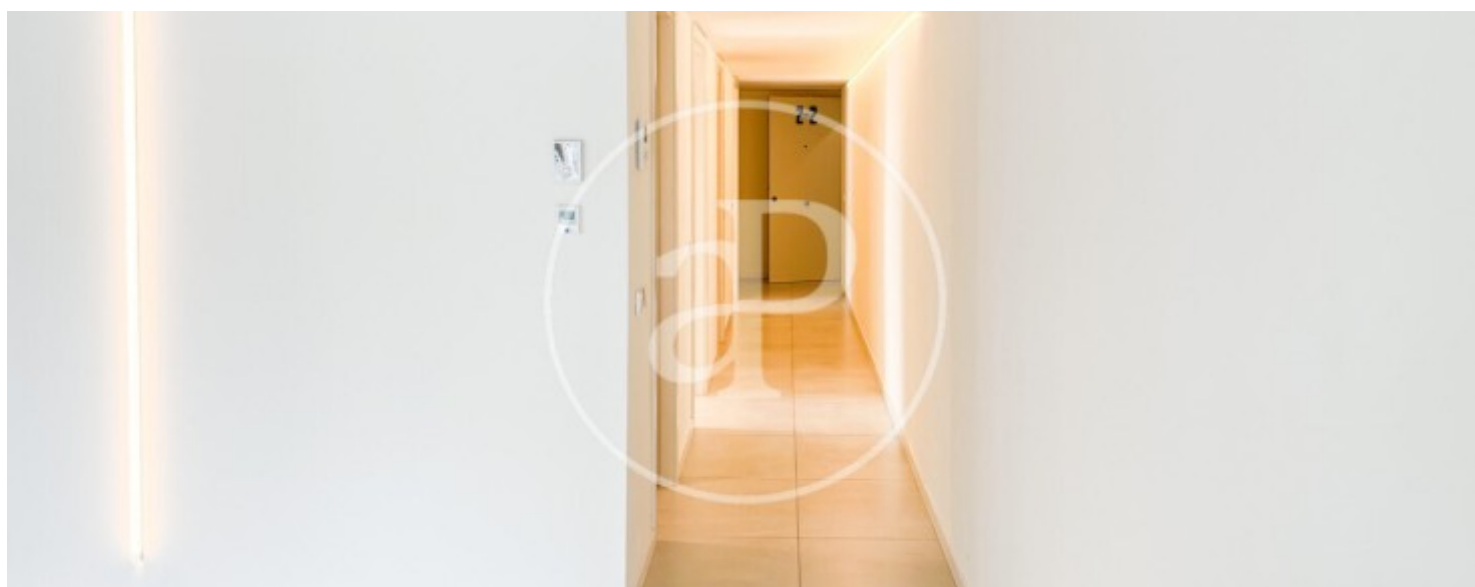
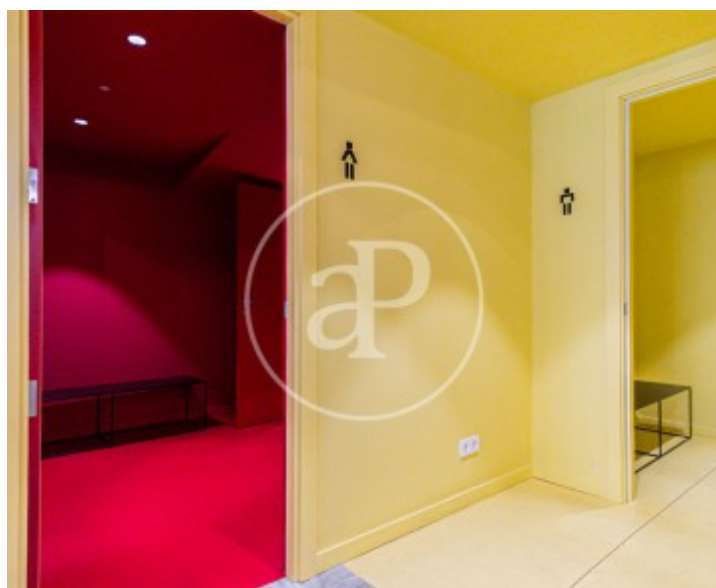
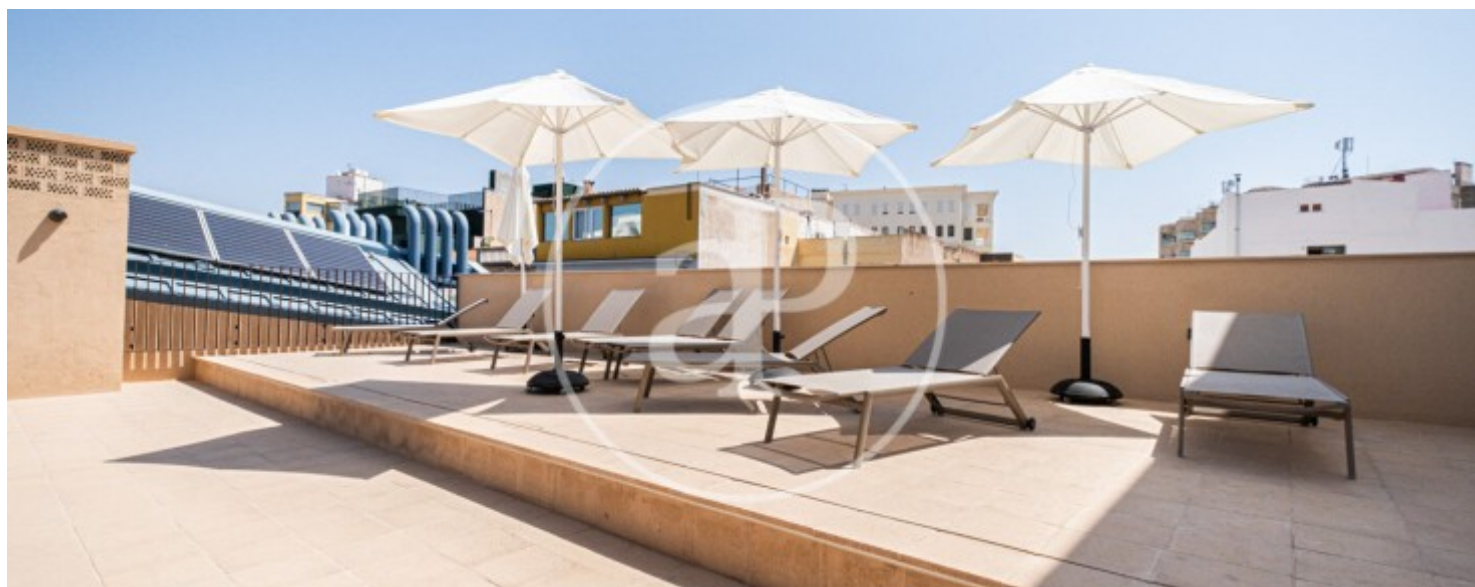
El Terreno, Palma de Mallorca

REF. APM2512006



El Terreno, Palma de Mallorca

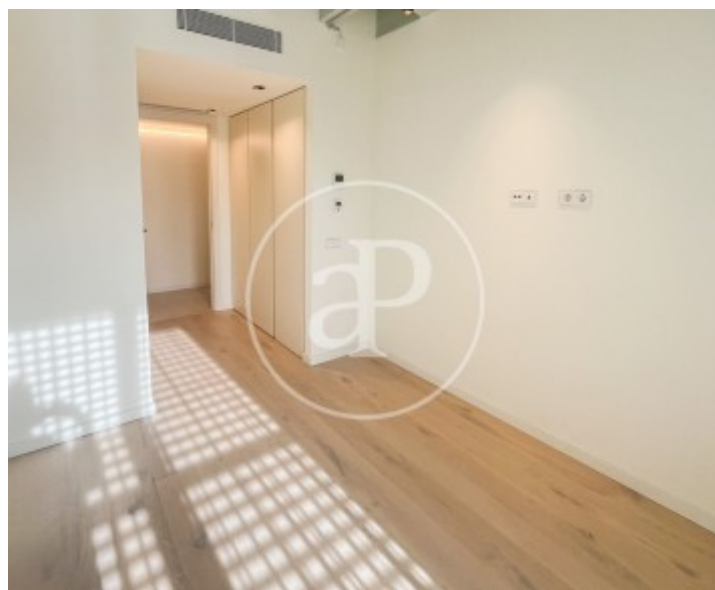
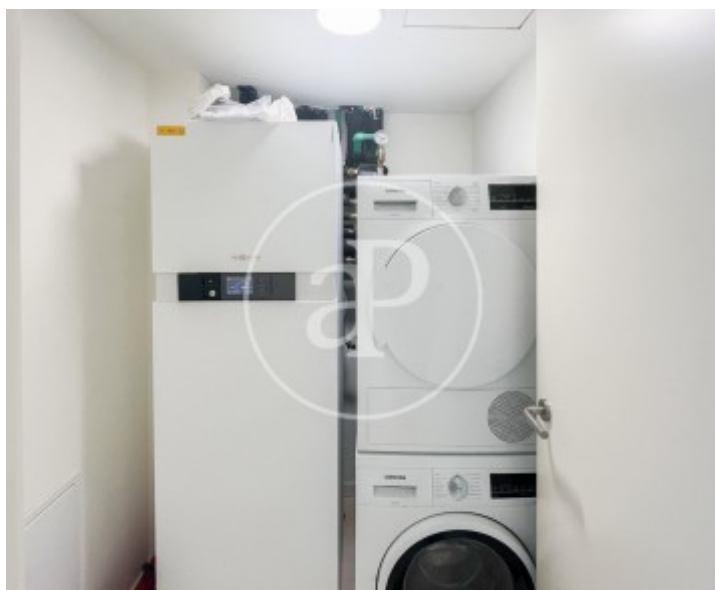
REF. APM2512006





El Terreno, Palma de Mallorca

REF. APM2512006



The information about any property is not binding to any offer or contract. Any verbal or written declaration made by aProperties with regards to the value or condition of the property should not be considered accurate or factual. The pictures make reference to some parts of the property at the times that they were taken. The areas, dimensions and distances that are given are approximate and should be checked by the client. The images are computer generated and are just an approximate indication of the real appearance of the property; these may change at any time. The information with regards to the property may also change at any time.

For **more information** or  
to make an appointment

[apropertiespalma@aproperties.es](mailto:apropertiespalma@aproperties.es)  
Tel: 871 16 01 60  
[www.aproperties.es](http://www.aproperties.es)