

El Terreno, Palma de Mallorca

REF. APM2511009

Apartment for rent in Paseo Marítimo

Features

- ✓ Views
- ✓ AACC
- ✓ Lift
- ✓ Furnished
- ✓ Terrace
- ✓ Has parking

Surface

86 m²

Bedroom

1

Bathroom

1

Price

1,650 €



In the coveted area of Paseo Marítimo, we find this impeccable apartment of 65 sqm with terrace of 22 sqm and sea views.

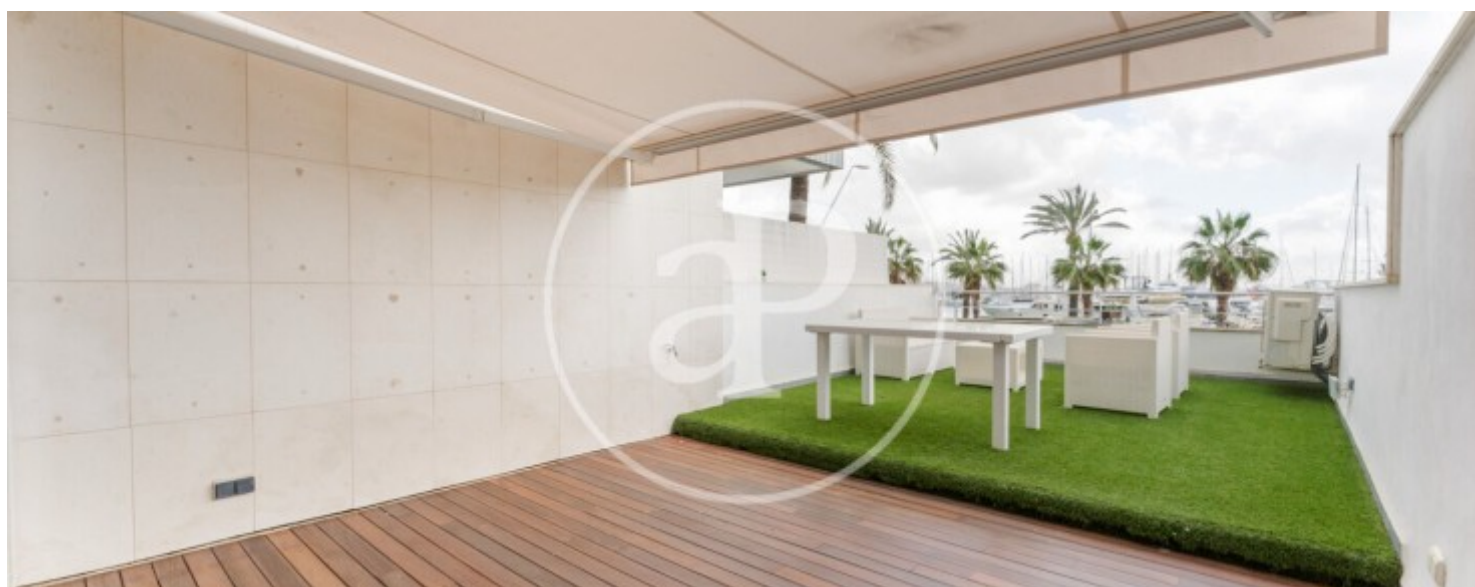
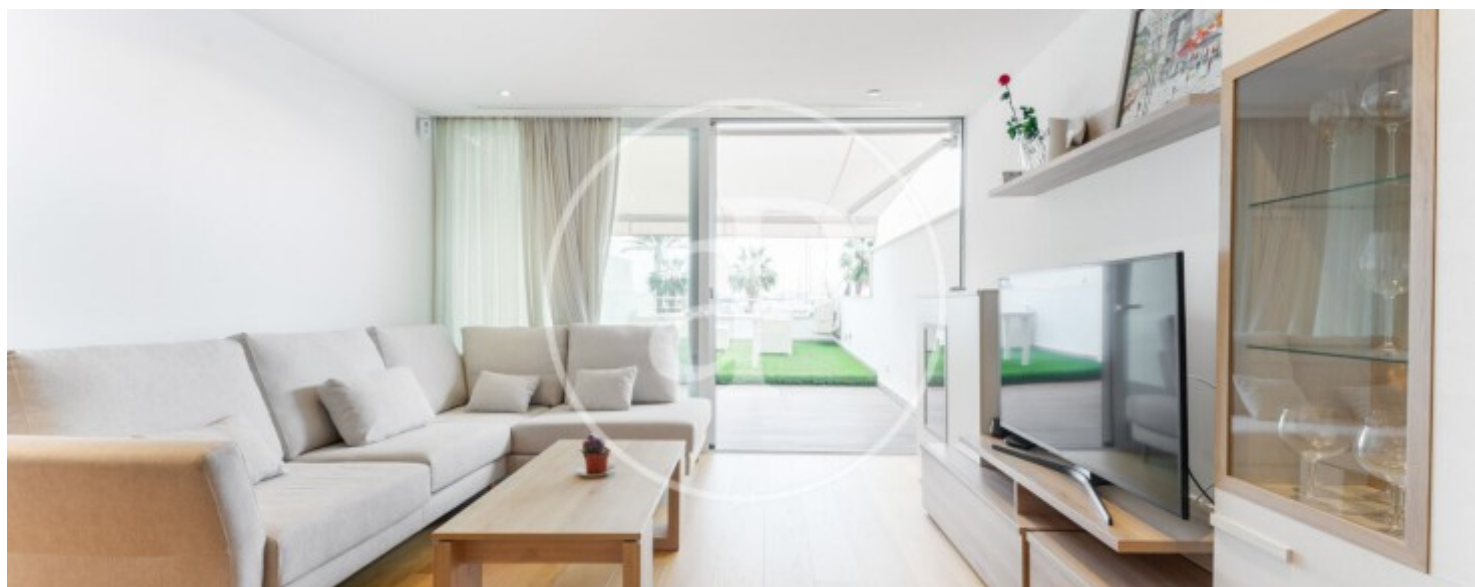
From the entrance door to the apartment through a small hall, we access a spacious and bright living-dining room tastefully decorated with a large window that leads to a very nice terrace with table and sofas to relax. The kitchen is independent but at the same time open to the living room, it is fully furnished and equipped. In the night area there is a double bedroom with fitted closets and a very spacious bathroom with shower. The property is fully furnished and equipped, ready to move in, has parquet floors, double glazed

windows, ducted hot and cold air conditioning in the living room and in the bedroom. Community fees, IBI and water are included, the rest of the supplies (electricity and internet) will be charged to the tenant. Excellent location very close to bars, restaurants, supermarkets and the marina "El Club de Mar". Within 10 minutes drive you can enjoy various beaches and golf courses in the area. The rental is temporary. Minimum stay of 8 months. Can you imagine living here? We are waiting for your call.

Contact us,
we will be happy to assist you,
to offer you more details and information.

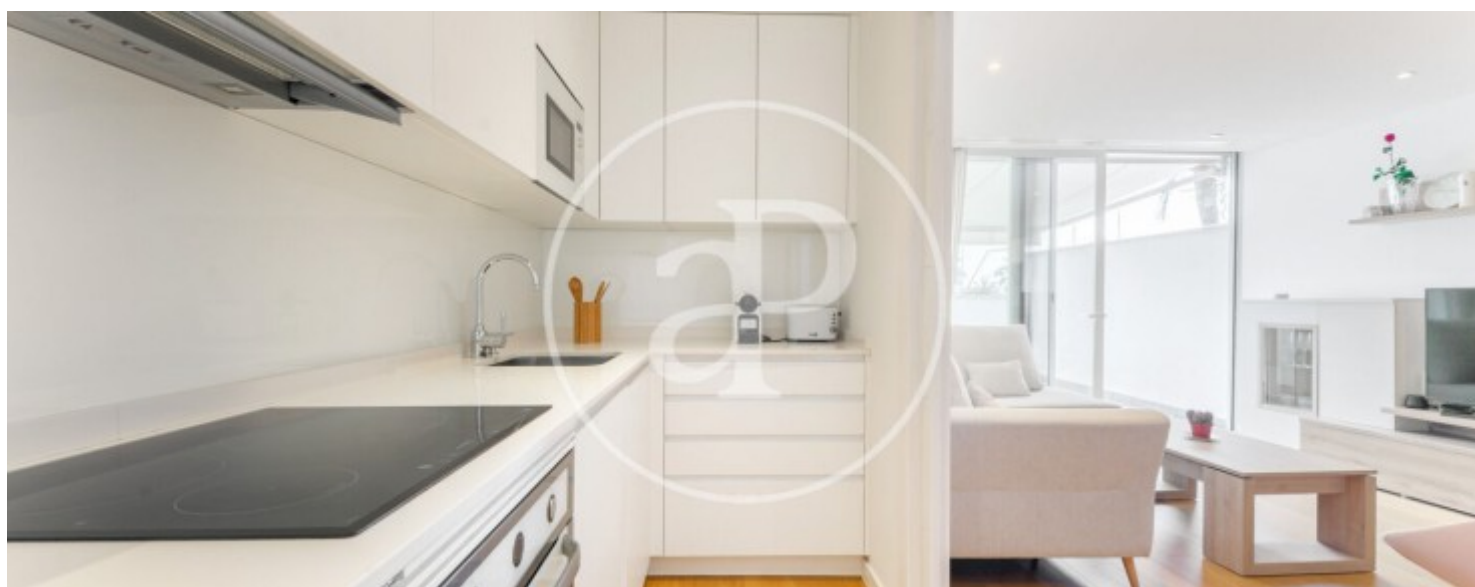
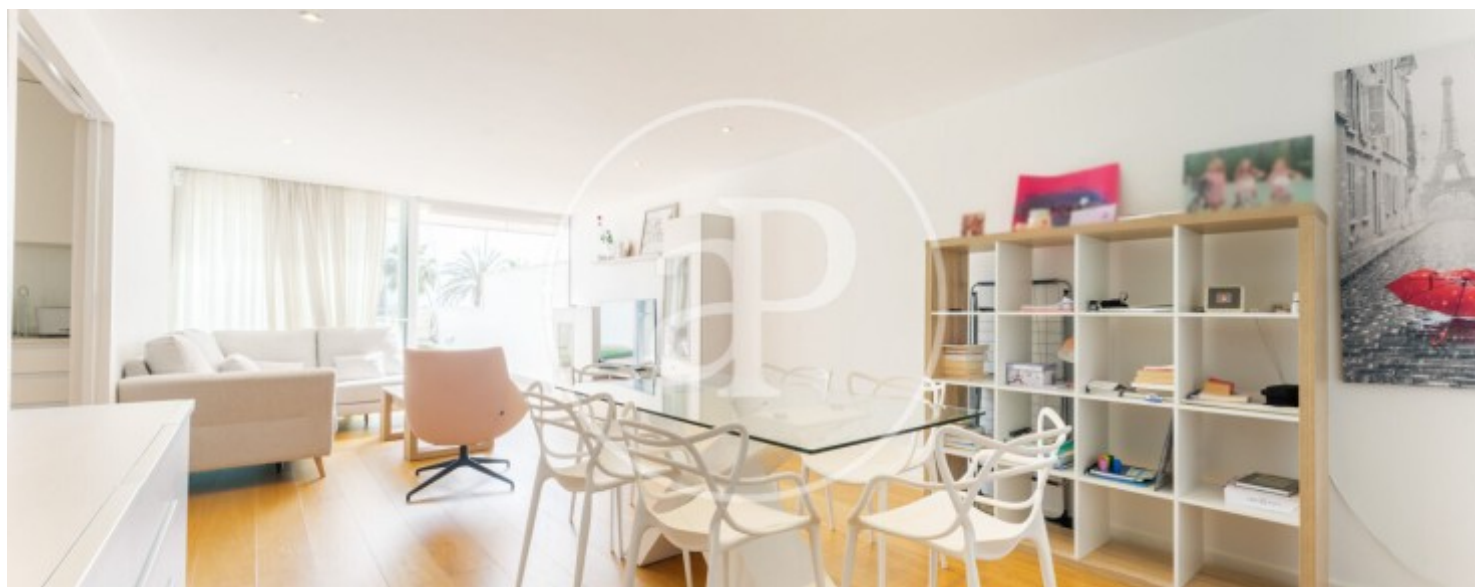
El Terreno, Palma de Mallorca

REF. APM2511009



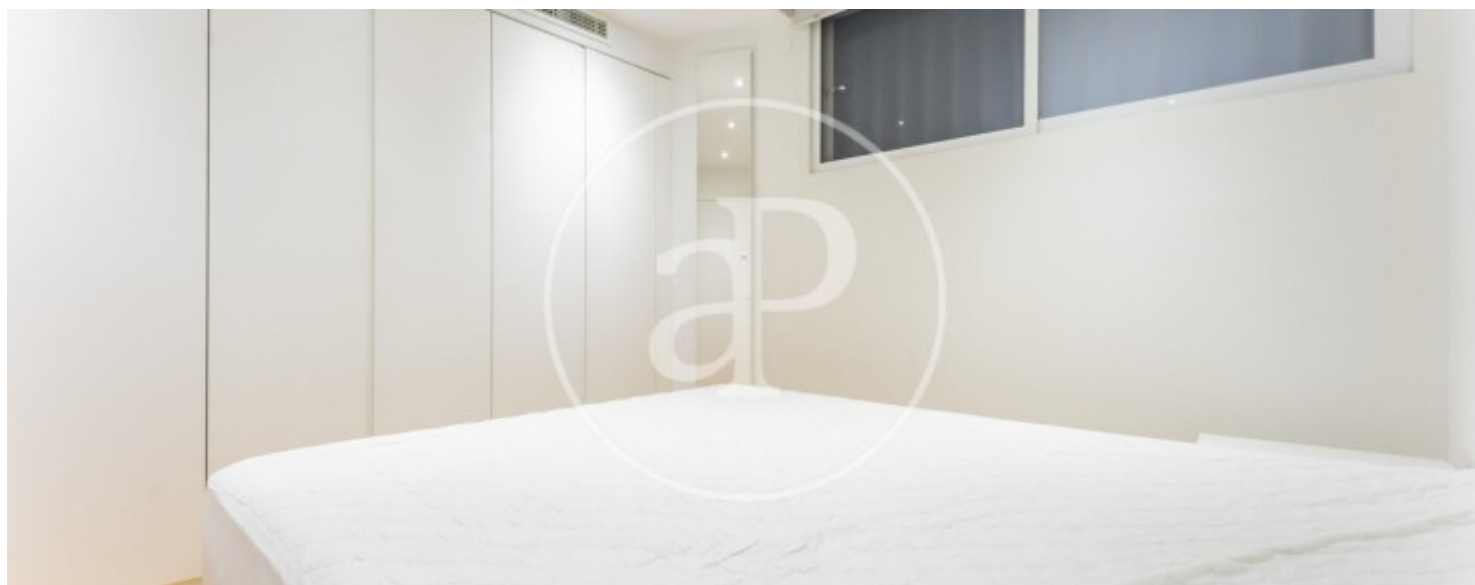
El Terreno, Palma de Mallorca

REF. APM2511009



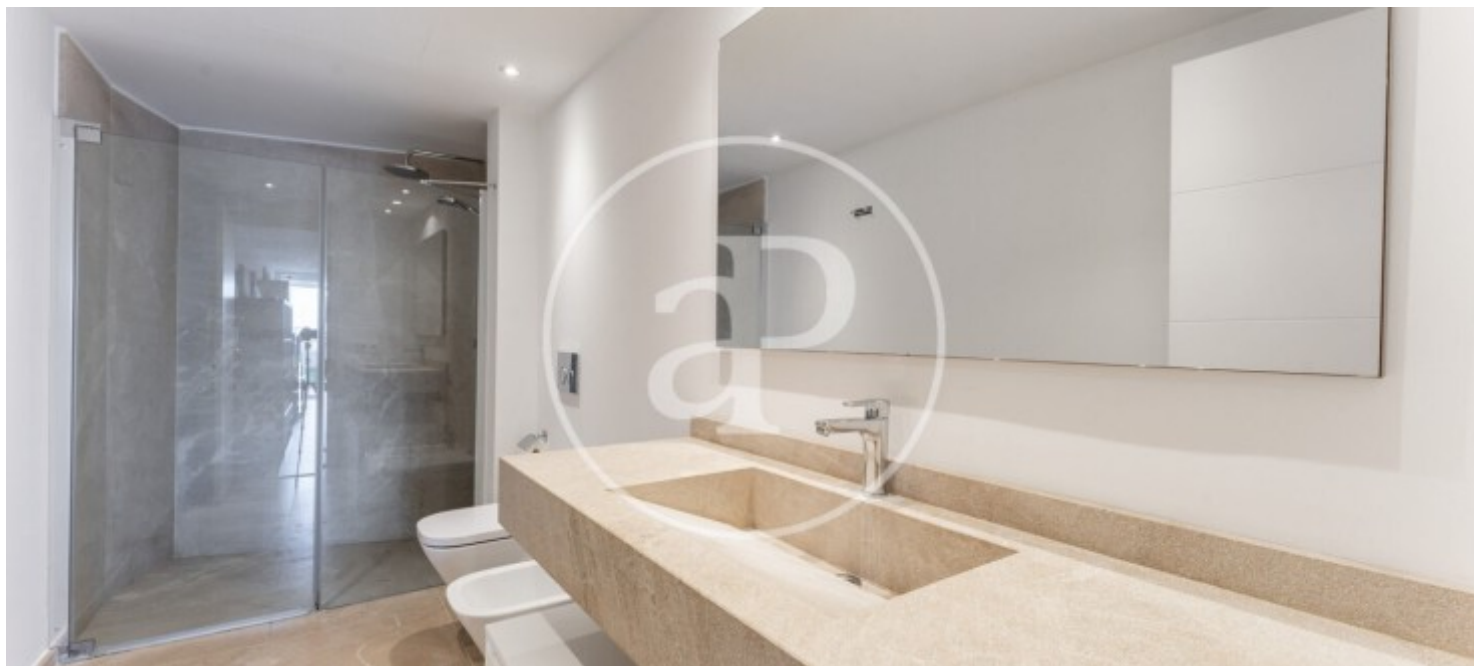
El Terreno, Palma de Mallorca

REF. APM2511009



El Terreno, Palma de Mallorca

REF. APM2511009



The information about any property is not binding to any offer or contract. Any verbal or written declaration made by aProperties with regards to the value or condition of the property should not be considered accurate or factual. The pictures make reference to some parts of the property at the times that they were taken. The areas, dimensions and distances that are given are approximate and should be checked by the client. The images are computer generated and are just an approximate indication of the real appearance of the property; these may change at any time. The information with regards to the property may also change at any time.

For **more information** or
to make an appointment

apropertiespalma@aproperties.es
Tel: 871 16 01 60
www.aproperties.es