

El Terreno, Palma de Mallorca

REF. APM2512007

# Apartment for rent in El Terreno

## Features

- ✓ Views
- ✓ AACC
- ✓ Gym
- ✓ Concierge
- ✓ Heating
- ✓ Pool
- ✓ Lift

Surface

**67 m<sup>2</sup>**

Bedroom

**1**

Bathrooms

**2**

Price

**1,600 €**



**In the historic neighbourhood of El Terreno, we find this one-bedroom apartment with open views.**

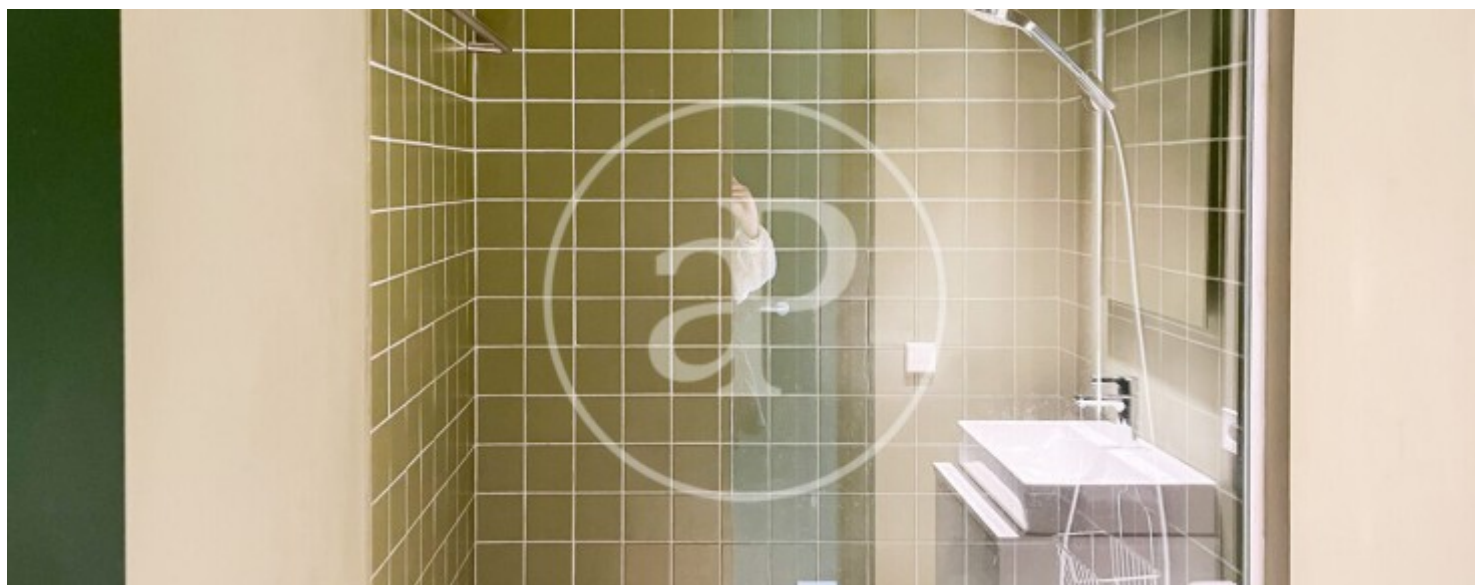
The project has been carried out by the renowned architectural studios MRVDV from the Netherlands and GRAS from Mallorca. This apartment offers 67 m<sup>2</sup> of constructed area and features a spacious living-dining room with large windows that ensure natural light throughout the entire day. The kitchen, open to the living room and fitted with bottle-green cabinetry, is fully furnished and equipped. The night area consists of one double bedroom with built-in wardrobes and a bathroom with a walk-in shower. In this same area, you will also find the space housing the washing

machine and dryer. On the rooftop, there is a communal terrace with tables, armchairs and a barbecue area—ideal for gatherings with friends. Notable features include high-quality finishes, sustainable construction materials, parquet flooring, double-glazed windows and hot-cold air conditioning via wall-mounted split units. The rental includes access to the swimming pool and the gym. There is also the option to rent a parking space. Pets are allowed. El Terreno, one of Palma's most authentic neighbourhoods, is regaining its splendour thanks to the new Gomila project, featuring...

**Contact us,**  
we will be happy to assist you,  
to offer you more details and information.

El Terreno, Palma de Mallorca

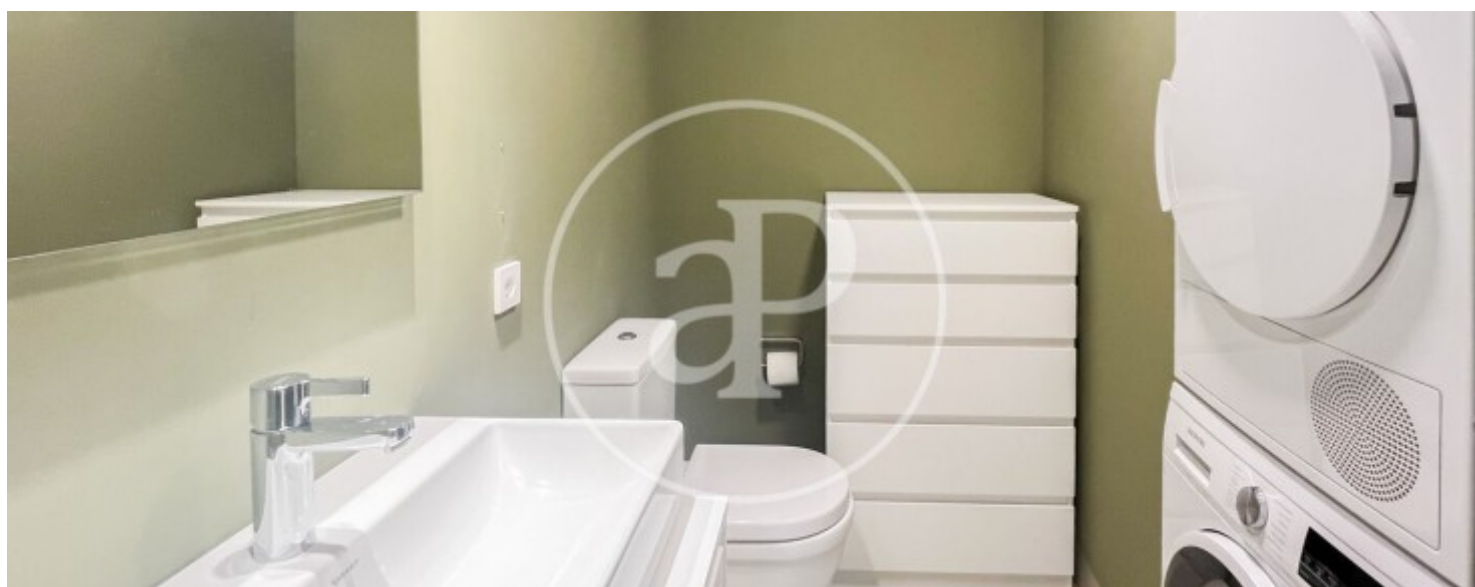
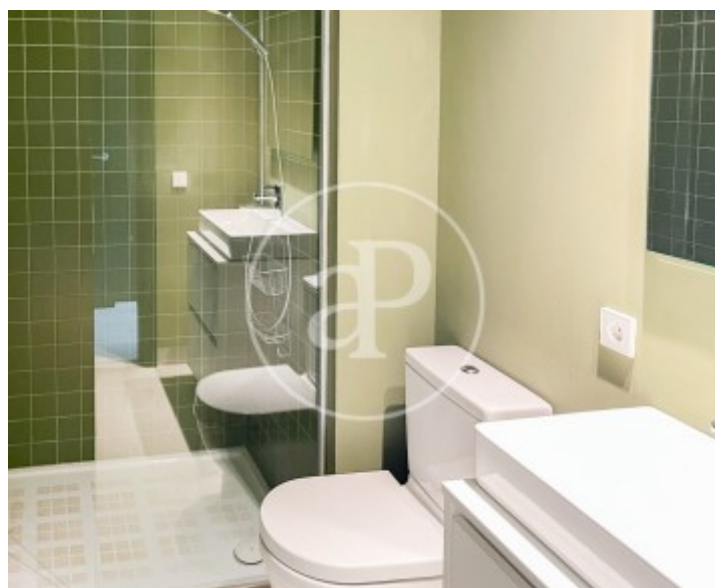
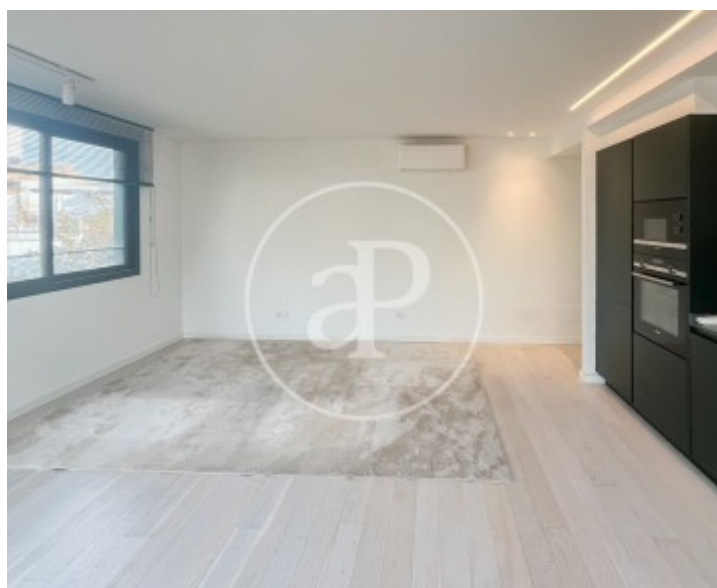
REF. APM2512007





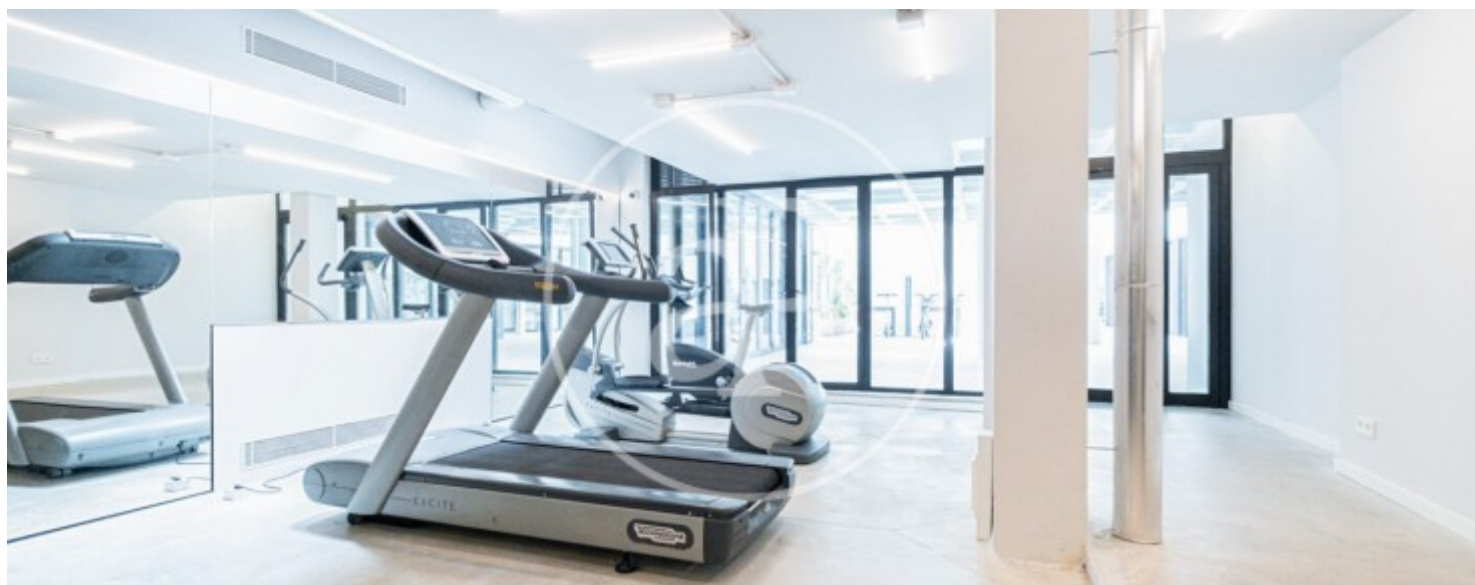
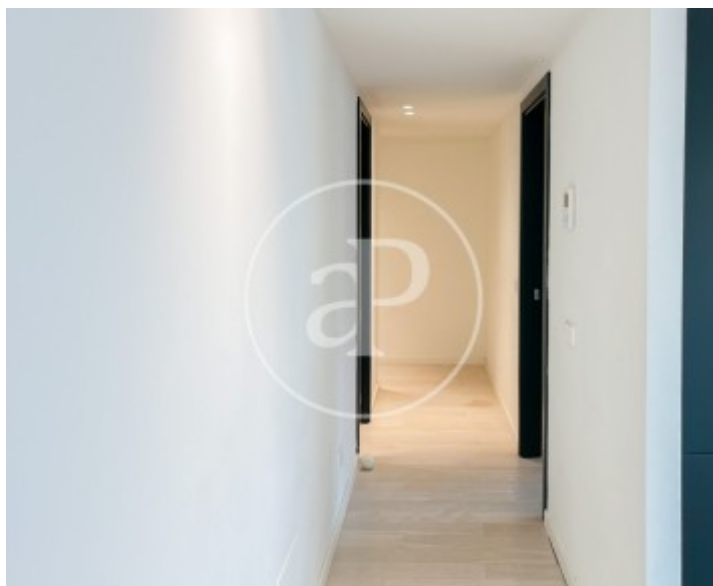
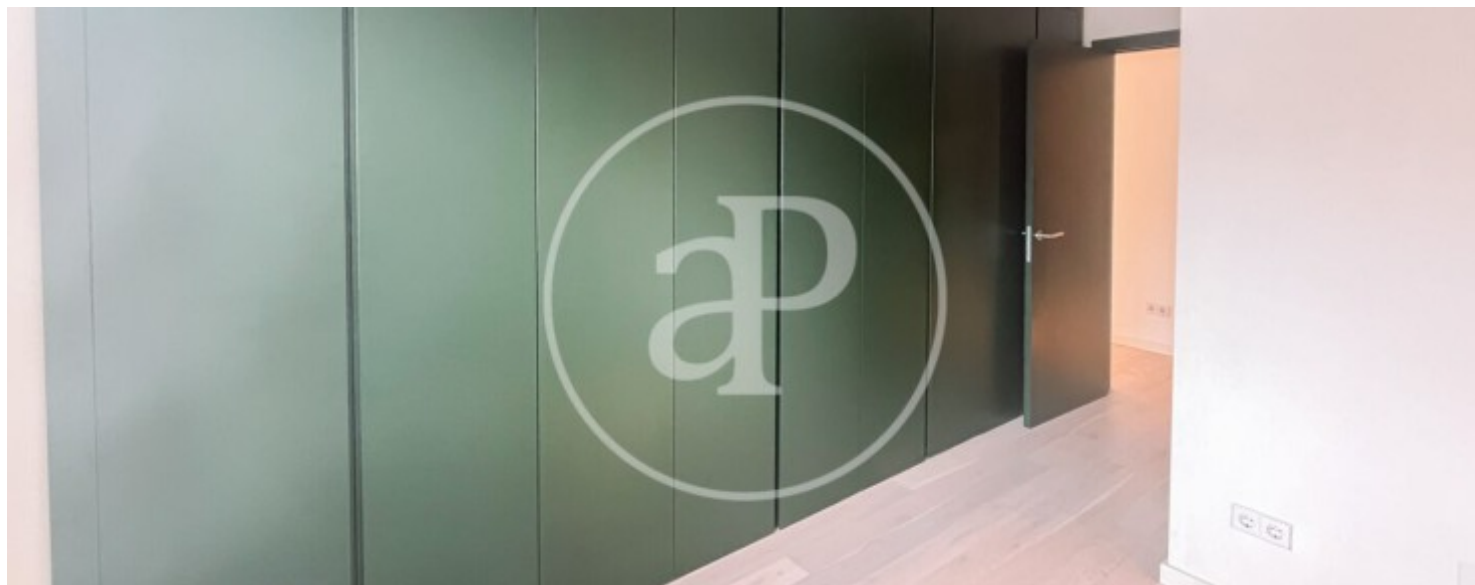
El Terreno, Palma de Mallorca

REF. APM2512007



El Terreno, Palma de Mallorca

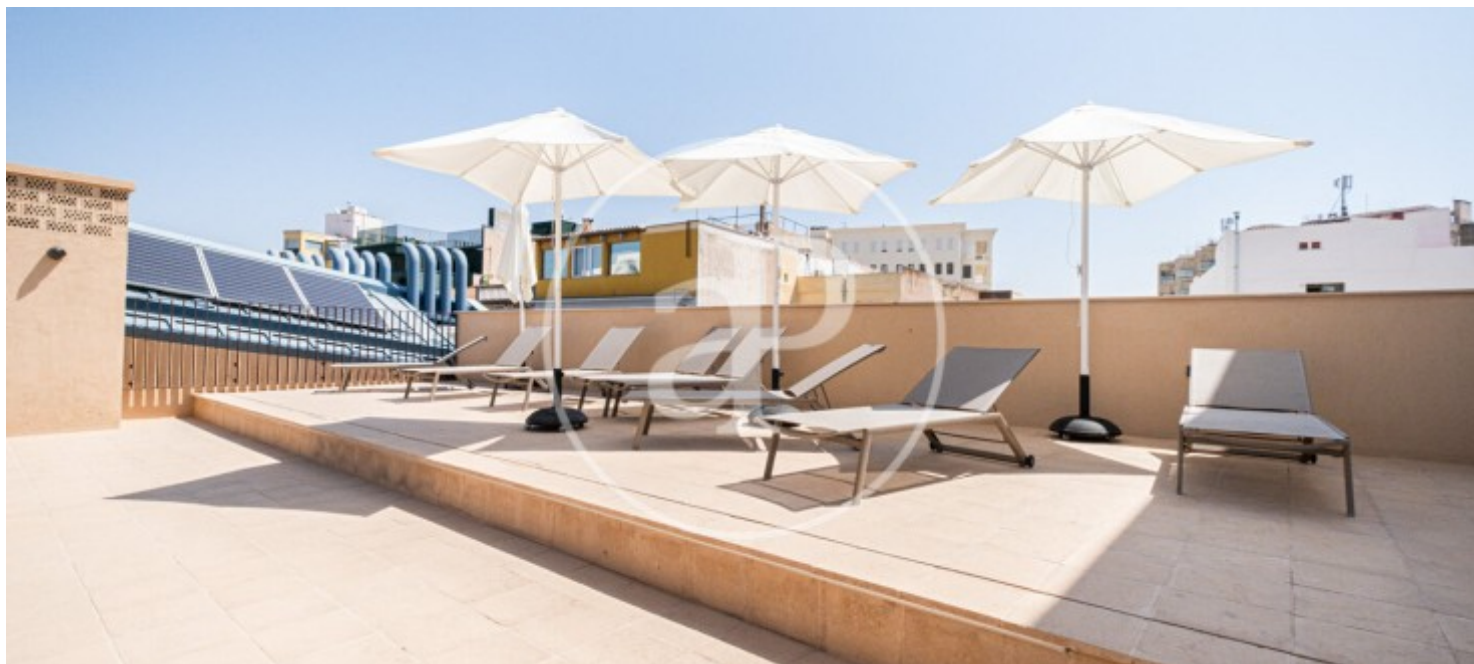
REF. APM2512007





El Terreno, Palma de Mallorca

REF. APM2512007



The information about any property is not binding to any offer or contract. Any verbal or written declaration made by aProperties with regards to the value or condition of the property should not be considered accurate or factual. The pictures make reference to some parts of the property at the times that they were taken. The areas, dimensions and distances that are given are approximate and should be checked by the client. The images are computer generated and are just an approximate indication of the real appearance of the property; these may change at any time. The information with regards to the property may also change at any time.

For **more information** or  
to make an appointment

[apropertiespalma@aproperties.es](mailto:apropertiespalma@aproperties.es)  
Tel: 871 16 01 60  
[www.aproperties.es](http://www.aproperties.es)