

El Terreno, Palma de Mallorca

REF. VPM2603016

# Apartment for sale on Paseo Marítimo

## Features

- ✓ Views
- ✓ Furnished
- ✓ AACC
- ✓ Terrace

Surface

**49 m<sup>2</sup>**

Bedroom

**1**

Bathroom

**1**

Price

**495,000 €**



**This property stands out for its combination of contemporary design, high-quality materials and a privileged seafront location.**

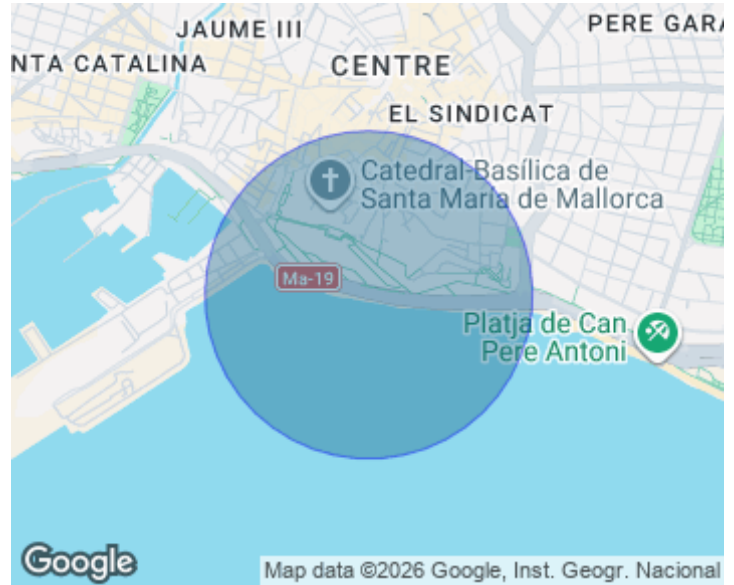
Situated in one of the most valued areas of the Paseo Marítimo, it offers open sea views and a bright and pleasant environment throughout the day. The comprehensive renovation has been carried out with top-quality materials, taking care of every detail to guarantee comfort, style and durability. The apartment features wooden flooring, which adds warmth and continuity to all rooms, and a designer kitchen with a stone island, conceived to offer functionality and an ideal space both for everyday life and for entertaining guests. The

living-dining room connects directly with the private terrace, a perfect space to enjoy the Mediterranean climate and the maritime surroundings at any time of the year. The property is delivered with designer furniture, selected to complement the modern aesthetics of the property and to allow immediate move-in without the need for additional investment. In addition, the property has a small walk-in wardrobe, an added value that improves organisation and provides extra comfort. Overall, this apartment offers an exceptional combination of location, quality and design, making it a very...

**Contact us,**  
we will be happy to assist you,  
to offer you more details and information.

El Terreno, Palma de Mallorca

REF. VPM2603016



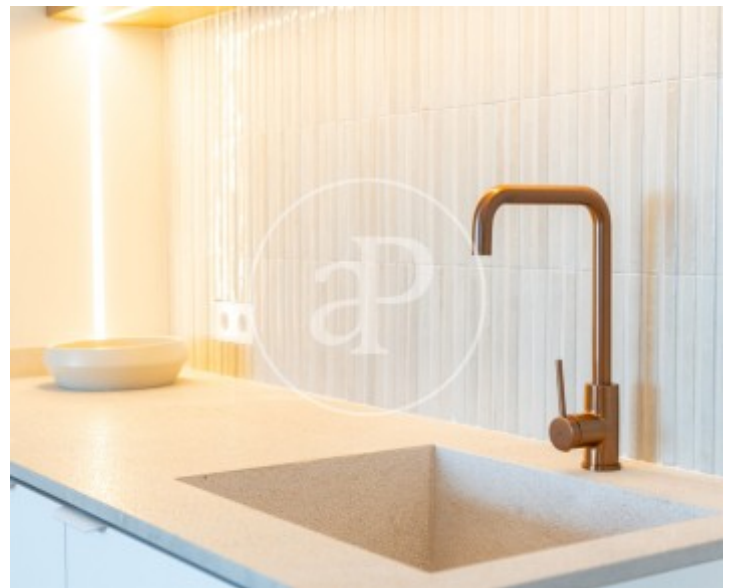
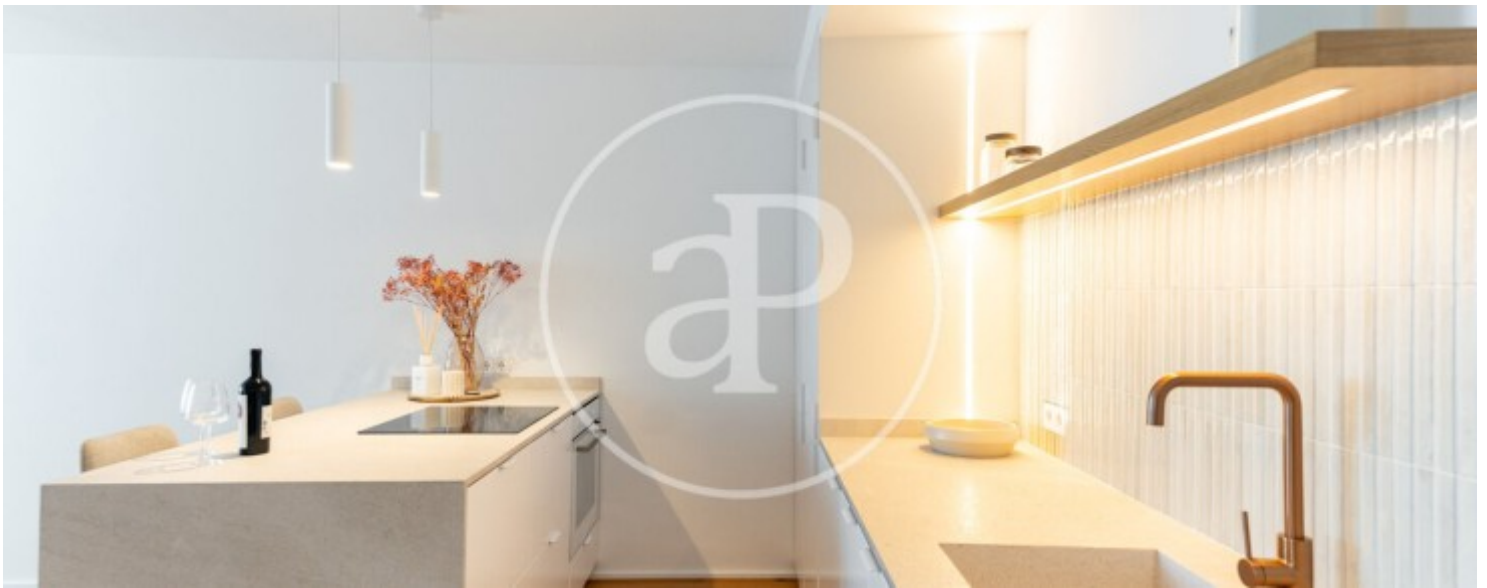
El Terreno, Palma de Mallorca

REF. VPM2603016



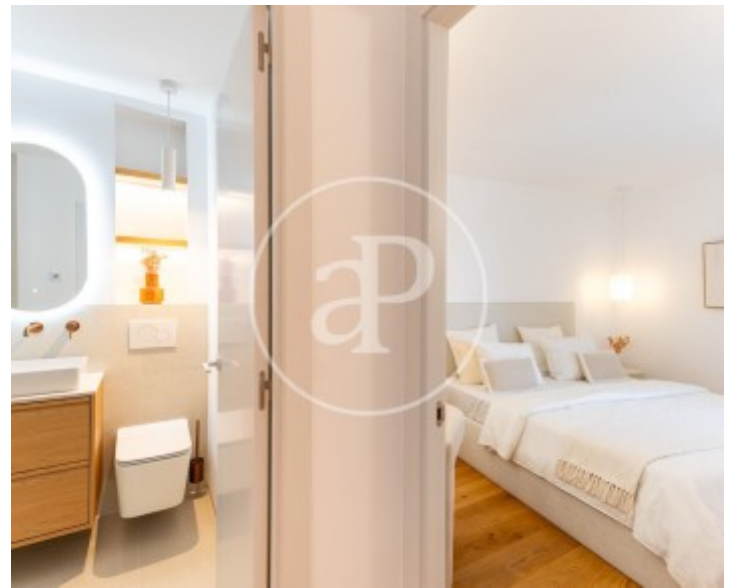
El Terreno, Palma de Mallorca

REF. VPM2603016



El Terreno, Palma de Mallorca

REF. VPM2603016



The information about any property is not binding to any offer or contract. Any verbal or written declaration made by aProperties with regards to the value or condition of the property should not be considered accurate or factual. The pictures make reference to some parts of the property at the times that they were taken. The areas, dimensions and distances that are given are approximate and should be checked by the client. The images are computer generated and are just an approximate indication of the real appearance of the property; these may change at any time. The information with regards to the property may also change at any time.

For **more information** or  
to make an appointment

[apropertiespalma@aproperties.es](mailto:apropertiespalma@aproperties.es)  
Tel: 871 16 01 60  
[www.aproperties.es](http://www.aproperties.es)