

El Terreno, Palma de Mallorca

REF. VPM2601011

House for sale in El Terreno (Palma de Mallorca)

Features

- ✓ Views
- ✓ Terrace
- ✓ Has parking
- ✓ Boxroom
- ✓ Backyard

Price

2,100,000 €

Surface
239 m²

Plot surface
288 m²

Bedrooms
6

Bathrooms
3



Detached house located in one of the best areas of Palma de Mallorca.

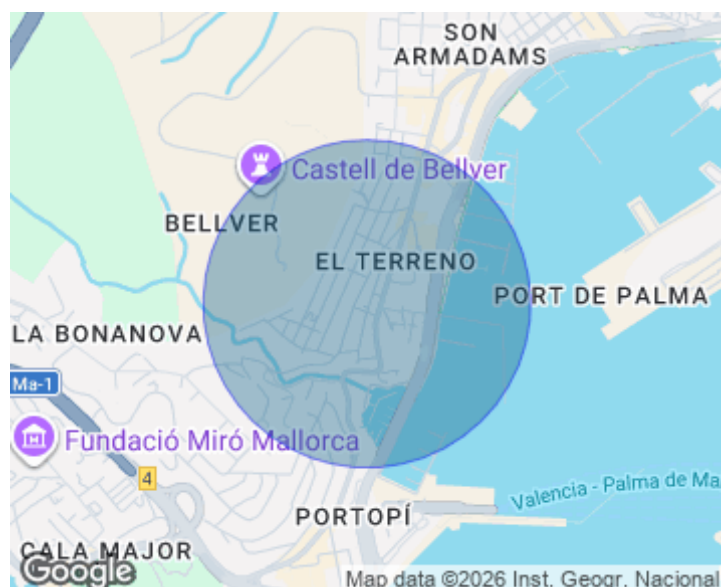
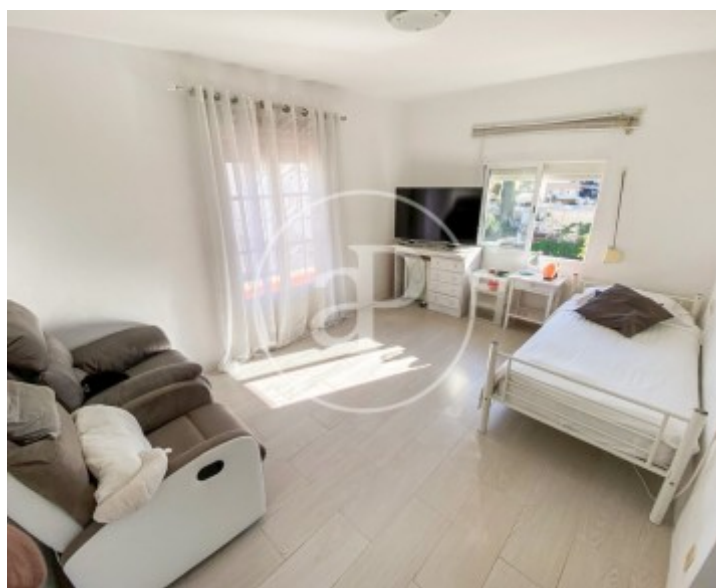
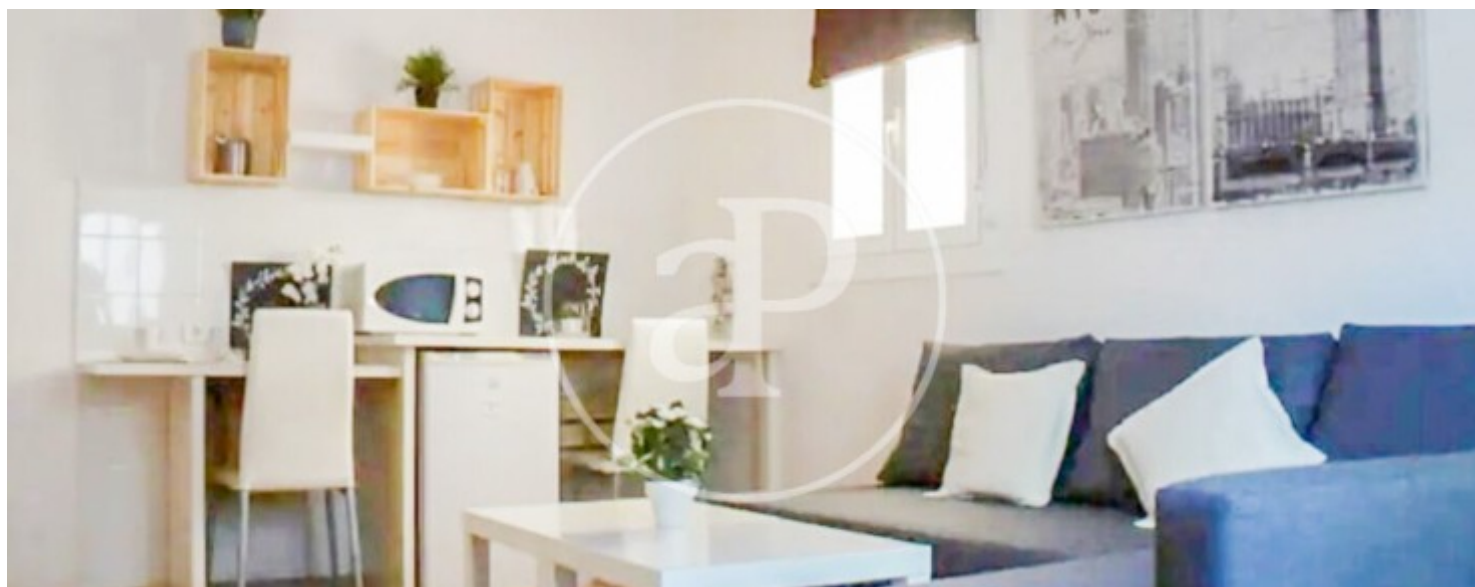
The property is distributed over three floors and comprises three independent apartments, a storage room (which could be converted into a second parking space), a parking space, and a rooftop terrace. On the ground floor, there are two apartments, each with one bedroom, a bathroom, a living room, and a kitchen. The first floor houses the main residence, consisting of two bedrooms, an entrance hall, a living room, and a kitchen. On the lower level, there is a storage room with the possibility of being converted into a studio apartment or an additional parking space, as well as a parking space. The

rooftop offers a spacious terrace with open views and partial sea views, ideal for enjoying the Mediterranean climate. The house is located on a street with direct access to the Bellver Forest, featuring a children's playground and paths perfect for morning runs or walks towards La Bonanova or Bellver Castle. From here, it is also possible to walk down to the Paseo Marítimo, where one can sometimes see impressive cruise ships emerging from the port like small floating cities, luxurious yachts owned by major entrepreneurs, and occasionally even the imposing USS Gerald R. Ford...

Contact us,
we will be happy to assist you,
to offer you more details and information.

El Terreno, Palma de Mallorca

REF. VPM2601011



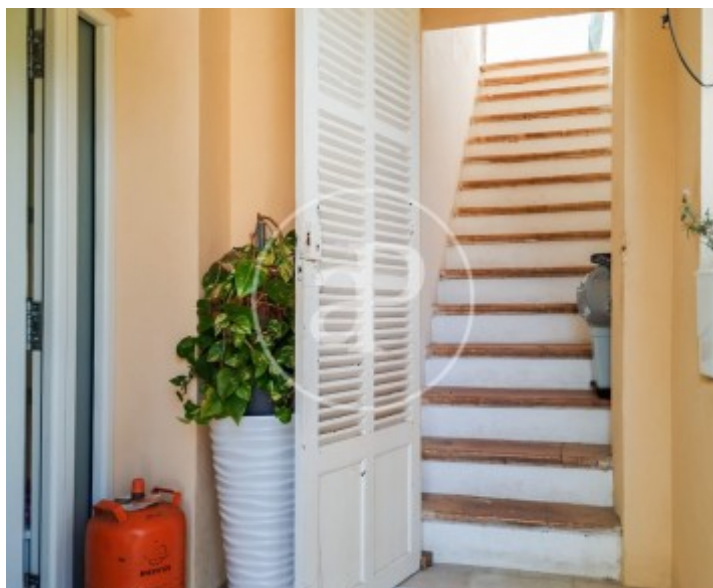
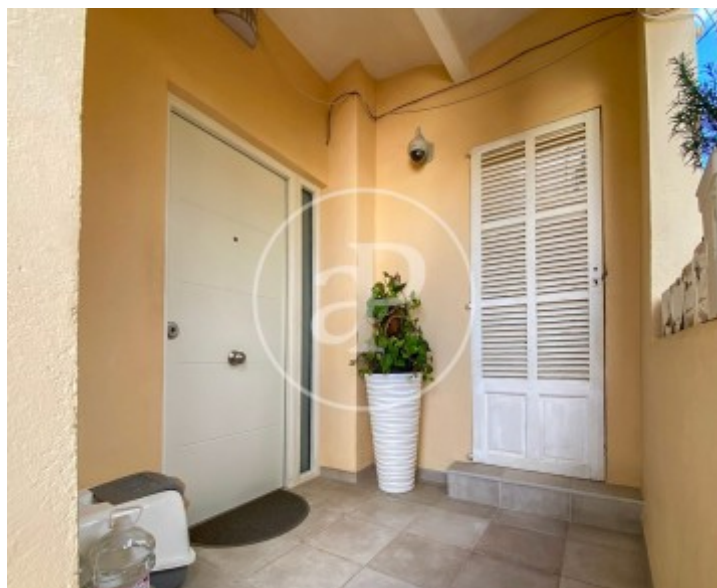
El Terreno, Palma de Mallorca

REF. VPM2601011



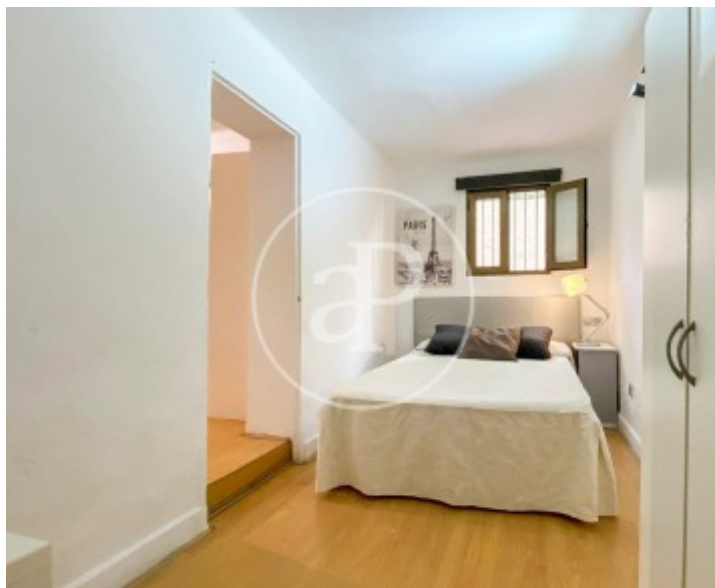
El Terreno, Palma de Mallorca

REF. VPM2601011



El Terreno, Palma de Mallorca

REF. VPM2601011



The information about any property is not binding to any offer or contract. Any verbal or written declaration made by aProperties with regards to the value or condition of the property should not be considered accurate or factual. The pictures make reference to some parts of the property at the times that they were taken. The areas, dimensions and distances that are given are approximate and should be checked by the client. The images are computer generated and are just an approximate indication of the real appearance of the property; these may change at any time. The information with regards to the property may also change at any time.

For **more information** or
to make an appointment

apropertiespalma@aproperties.es
Tel: 871 16 01 60
www.aproperties.es