

El Terreno, Palma de Mallorca

REF. APM2512008

Flat for rent in Palma de Mallorca

Features

- ✓ Views
- ✓ AACC
- ✓ Pool
- ✓ Concierge
- ✓ Heating
- ✓ Terrace
- ✓ Lift
- ✓ Has parking

Surface

190 m²

Bedrooms

3

Bathrooms

3

Price

4,500 €



Located on Palma's renowned Paseo Marítimo, this spectacular 160 m² apartment has been recently renovated with a modern and elegant style that captivates from the very first moment.

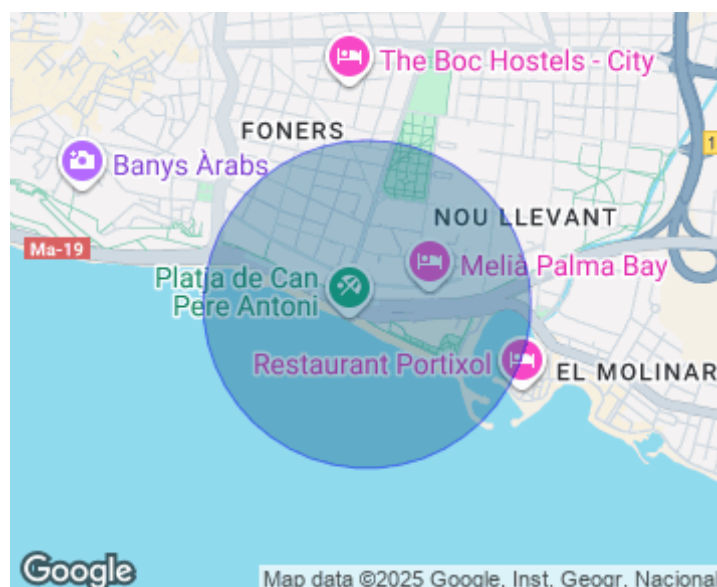
The property stands out for its spaciousness, brightness, and a 20 m² terrace offering privileged sea views and overlooking the famous "Club de Mar"—the perfect place to relax and enjoy unforgettable moments. The living-dining room is large and welcoming, featuring an electric fireplace that adds warmth and a contemporary touch. From here, you have direct access to the terrace, allowing you to enjoy natural light and the charm of the Mediterranean

at all times. The kitchen, in soft green tones, combines functionality and aesthetics. Though independent, it opens onto the living room for added convenience. It is equipped with high-end appliances, a wine cooler, a refrigerator with a water dispenser, and has space for a cosy breakfast area. There is also a practical utility room with a washing machine and dryer. A guest toilet with an original blue wallpaper design adds a distinctive and elegant accent. A hallway with built-in wardrobes leads to the sleeping area, where you'll find three double bedrooms, all with built-in wardrobes...

Contact us,
we will be happy to assist you,
to offer you more details and information.

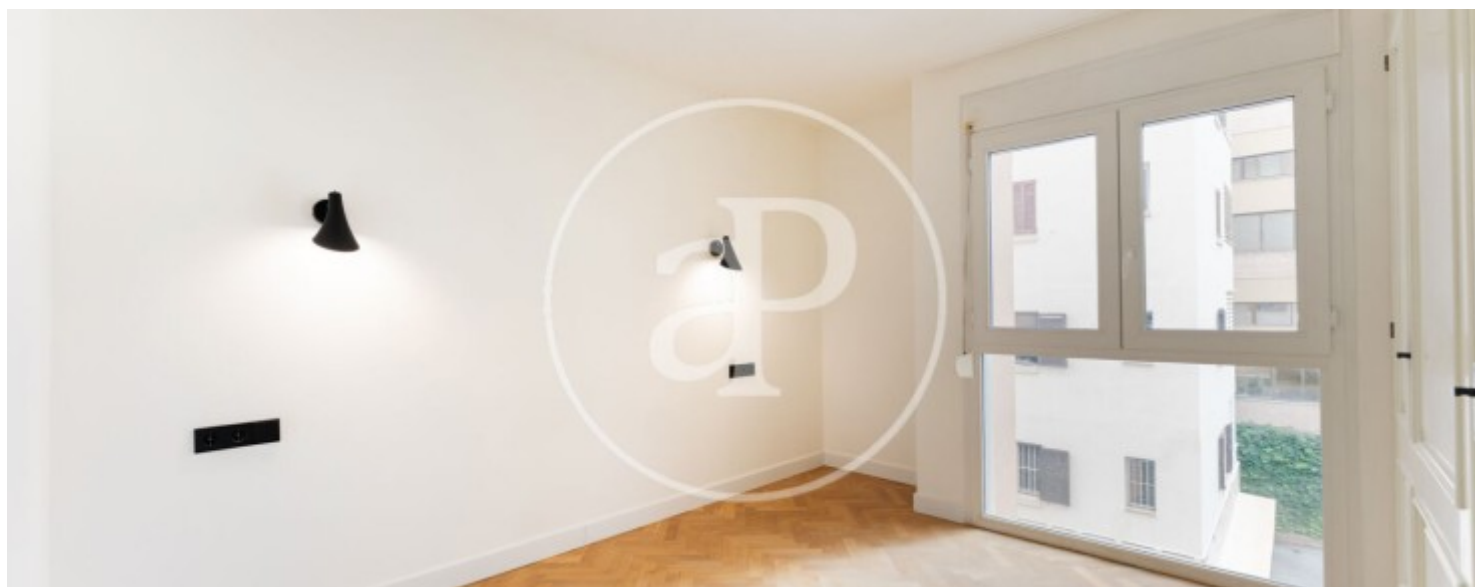
El Terreno, Palma de Mallorca

REF. APM2512008



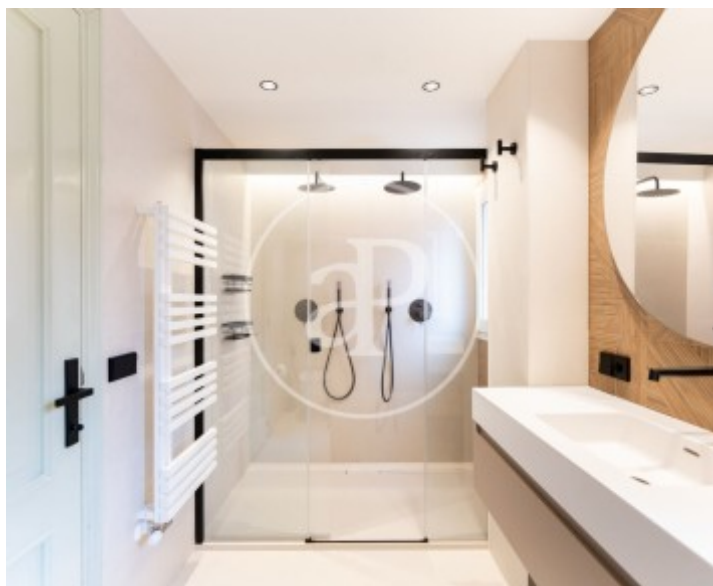
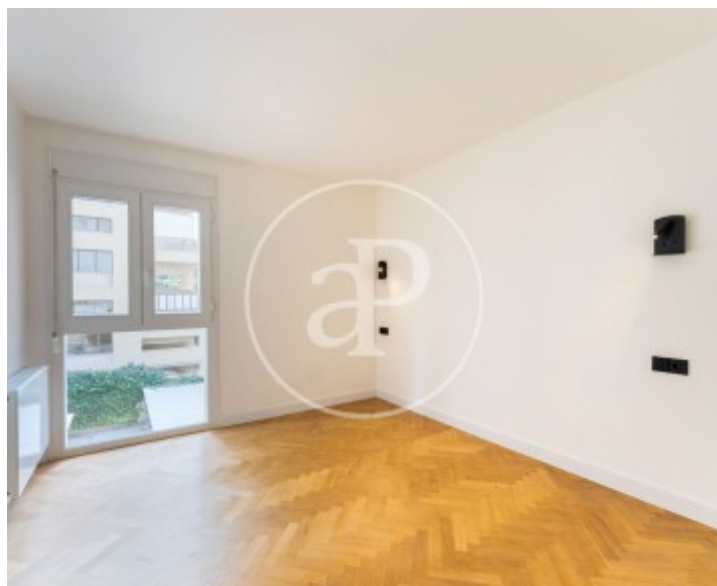
El Terreno, Palma de Mallorca

REF. APM2512008



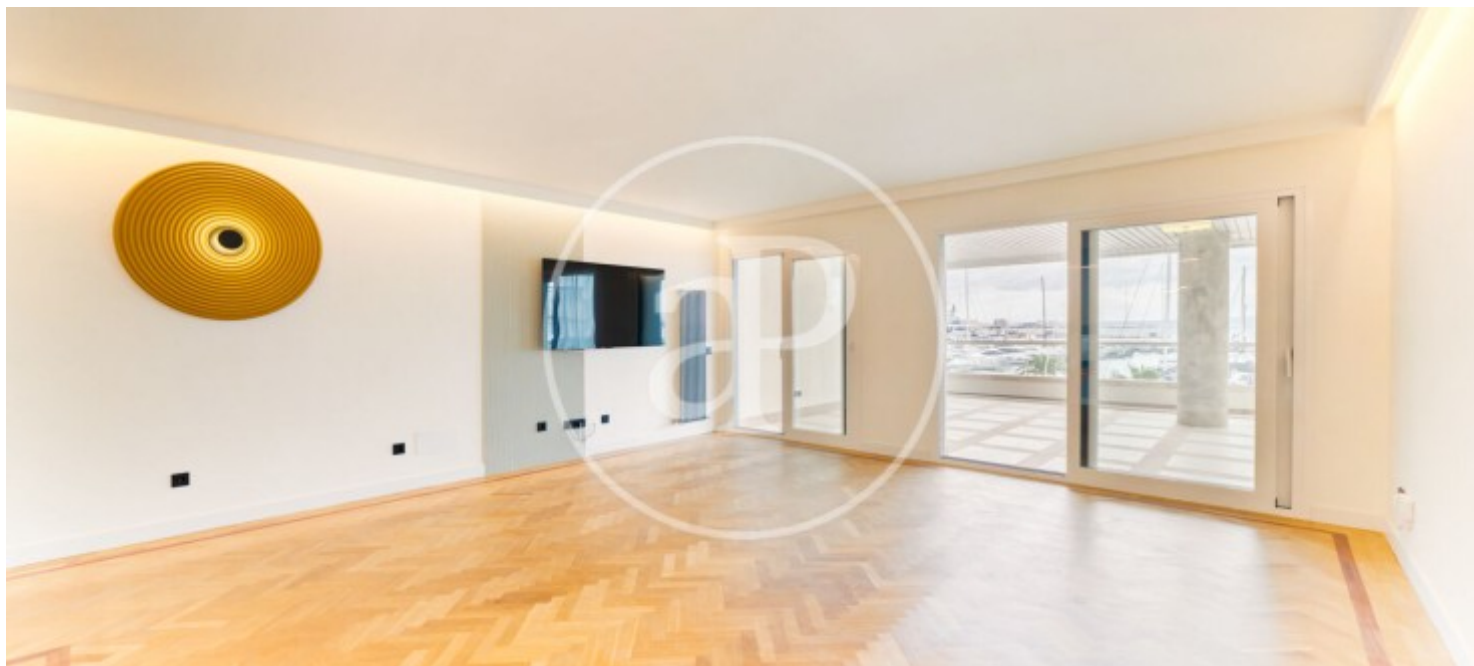
El Terreno, Palma de Mallorca

REF. APM2512008



El Terreno, Palma de Mallorca

REF. APM2512008



The information about any property is not binding to any offer or contract. Any verbal or written declaration made by aProperties with regards to the value or condition of the property should not be considered accurate or factual. The pictures make reference to some parts of the property at the times that they were taken. The areas, dimensions and distances that are given are approximate and should be checked by the client. The images are computer generated and are just an approximate indication of the real appearance of the property; these may change at any time. The information with regards to the property may also change at any time.

For **more information** or
to make an appointment

apropertiespalma@aproperties.es
Tel: 871 16 01 60
www.aproperties.es