



El Terreno, Palma de Mallorca

REF. VPM2602013

House for sale in El Terreno

Features

- ✓ Terrace
- ✓ Pool
- ✓ Has parking

Price

2,795,000 €

Surface

174 m²

Bedrooms

4

Bathrooms

2



Located next to the entrance of Bellver Castle, this property stands out for its spaciousness, classic character, and excellent south-facing orientation, as well as offering sea views from its rooftop.

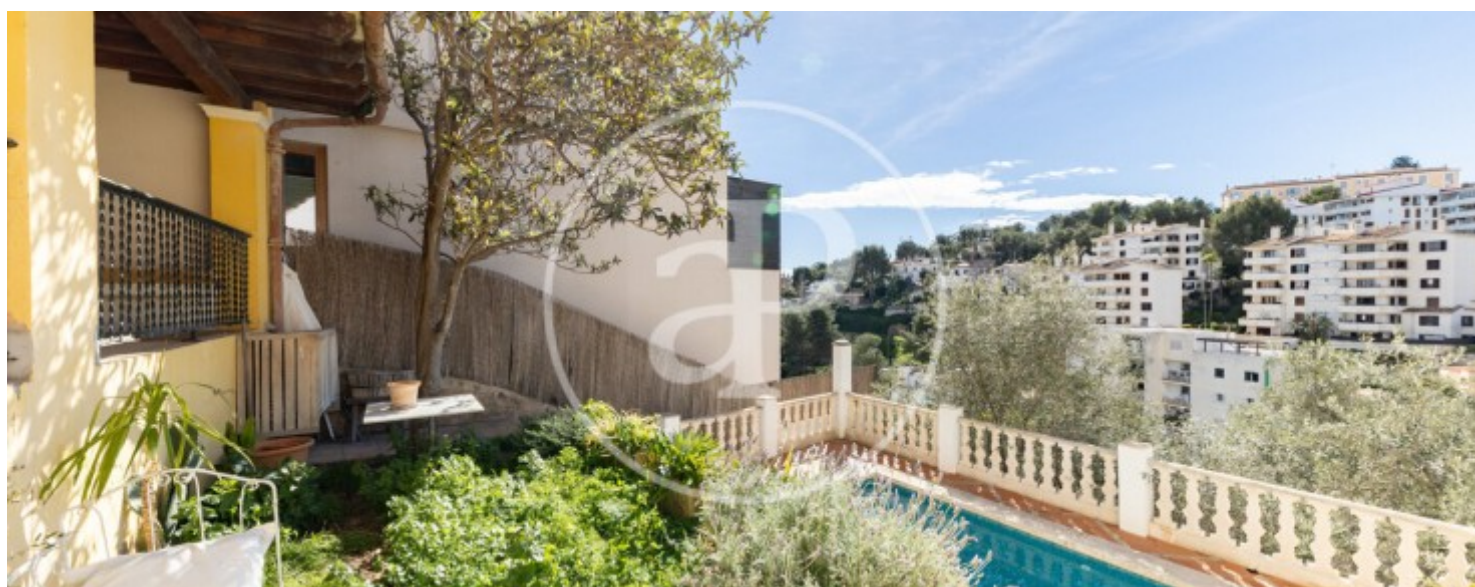
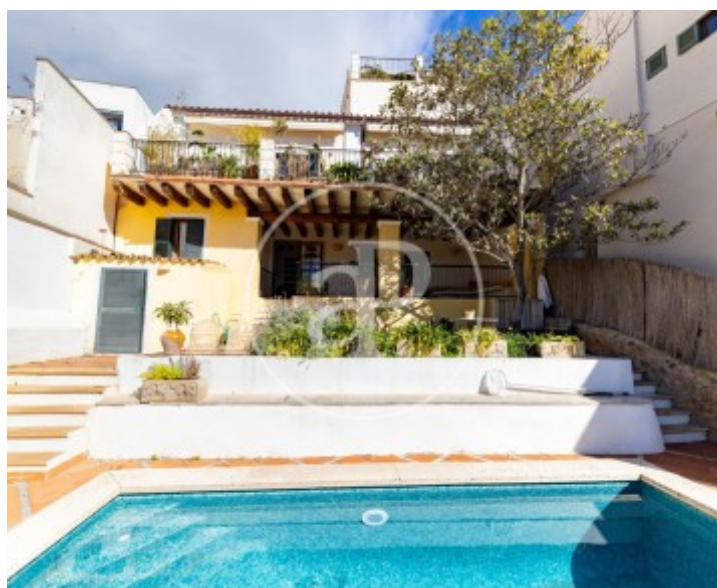
The property is distributed over several floors and offers spacious and versatile living areas. It features high ceilings in a classic style and a large entrance hall that provides a sense of elegance from the moment you enter. On the second floor, there is a European-style kitchen, one bedroom, a full bathroom, and an office that can be adapted as an additional bedroom. The first floor comprises two bedrooms and a living room with a fireplace and double-height

ceilings, with direct access to the terrace and pool area, creating a very pleasant indoor-outdoor connection. On the upper floor, there are two additional bedrooms, a full bathroom, and a balcony. The third floor offers an open-plan living room, ideal as a leisure area. Outside, the property features a terrace, garden (currently in need of updating), a south-facing swimming pool, and a rooftop with sea views. Additionally, it includes a porch, two parking spaces, and two storage rooms, adding comfort and functionality. A property with great potential, in a prime location and with multiple...

Contact us,
we will be happy to assist you,
to offer you more details and information.

El Terreno, Palma de Mallorca

REF. VPM2602013



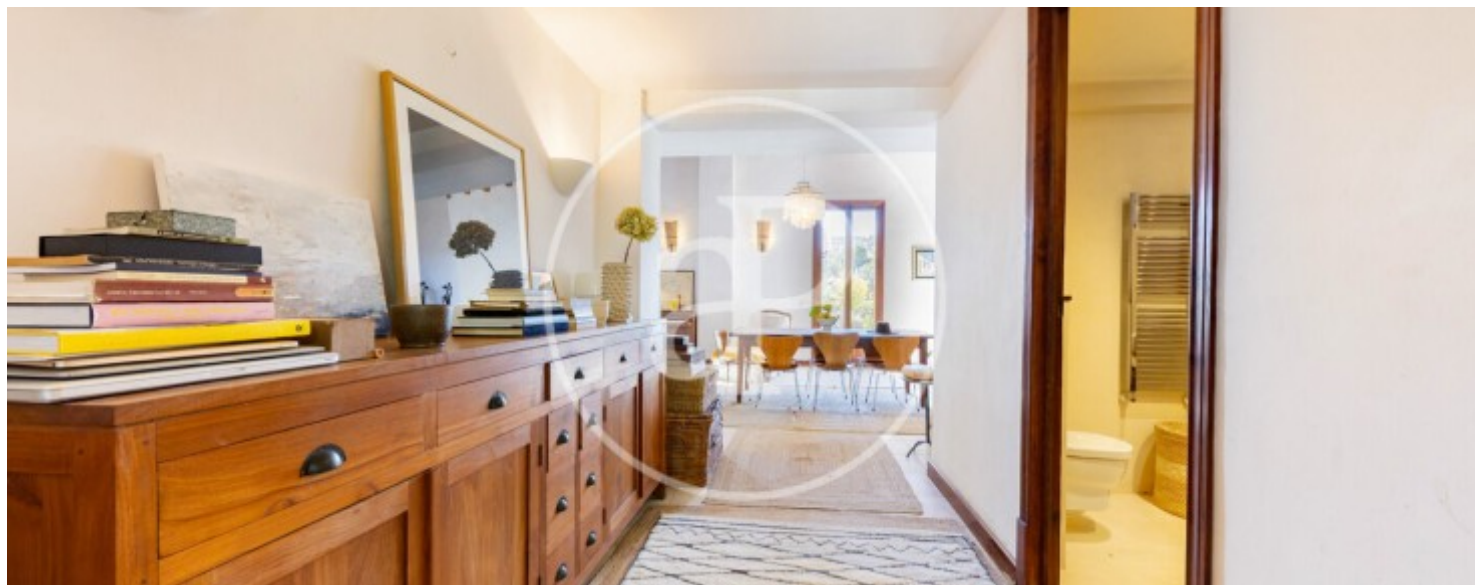
El Terreno, Palma de Mallorca

REF. VPM2602013



El Terreno, Palma de Mallorca

REF. VPM2602013



El Terreno, Palma de Mallorca

REF. VPM2602013



The information about any property is not binding to any offer or contract. Any verbal or written declaration made by aProperties with regards to the value or condition of the property should not be considered accurate or factual. The pictures make reference to some parts of the property at the times that they were taken. The areas, dimensions and distances that are given are approximate and should be checked by the client. The images are computer generated and are just an approximate indication of the real appearance of the property; these may change at any time. The information with regards to the property may also change at any time.

For **more information** or
to make an appointment

apropertiespalma@aproperties.es
Tel: 871 16 01 60
www.aproperties.es