



El Terreno, Palma de Mallorca

REF. VPM2511019

Duplex for sale in El Terreno, Palma de Mallorca

Features

- ✓ Views
- ✓ Heating
- ✓ Boxroom
- ✓ AACC
- ✓ Terrace
- ✓ Backyard
- ✓ Pool
- ✓ Has parking

Surface

141 m²

Bedrooms

3

Bathrooms

2

Price

1,290,000 €



Luxury townhouse duplex with sea views and private pool for sale in Palma – El Terreno.

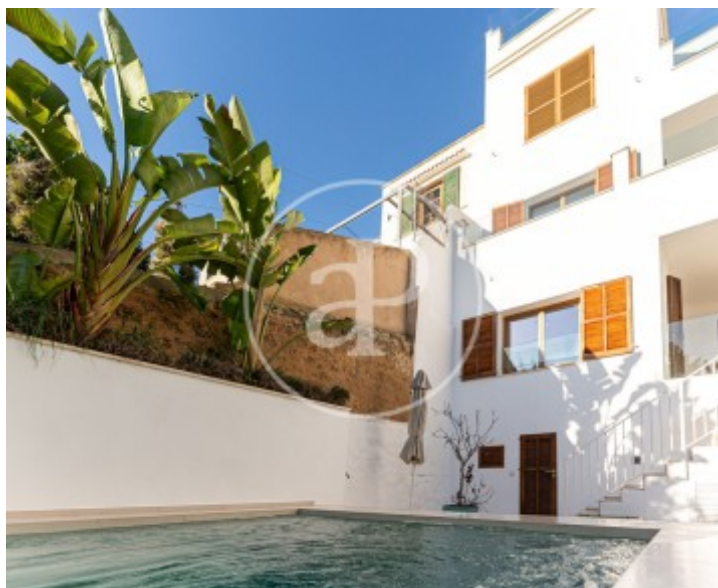
This exceptional property boasts a unique panoramic view over the Palma skyline, with the cathedral and port framing a truly Mediterranean landscape. Recently renovated with the highest quality materials, it stands out for its elegance, contemporary design, and carefully selected luxury finishes. Spread over two floors with 143 m² built and 100 m² of terraces and porches, it offers spacious and bright areas. On the upper floor (night area), there are two generous bedrooms, both with ample space for wardrobes and additional furniture. A designer bathroom serves this

floor, accompanied by a beautiful terrace with sea views and a privileged perspective of the private pool. On the lower floor (day area), there is a third bedroom and a second bathroom, as well as additional spaces ideal for storage. The open-concept kitchen integrates with the elegant living-dining room, creating a perfect social atmosphere that extends to a covered terrace, ideal for year-round enjoyment. From here, stairs lead to the garden area, where a large 68 m² open terrace surrounds the private pool. This level also includes an additional space currently used as a laundry room...

Contact us,
we will be happy to assist you,
to offer you more details and information.

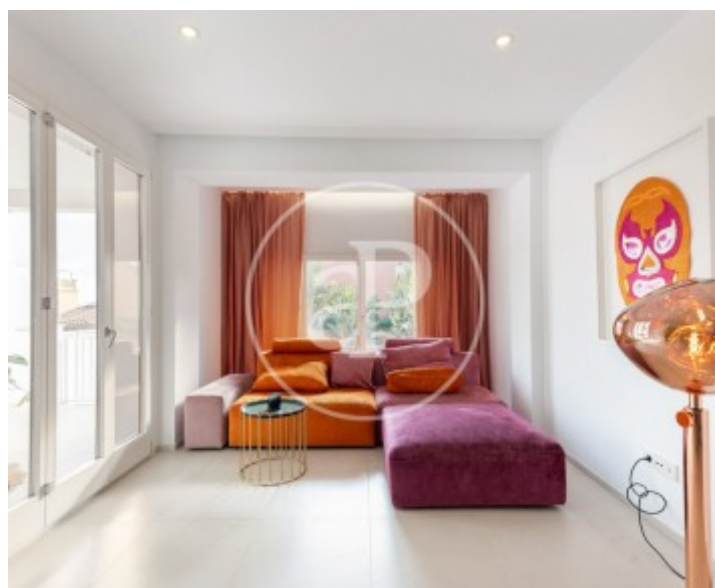
El Terreno, Palma de Mallorca

REF. VPM2511019



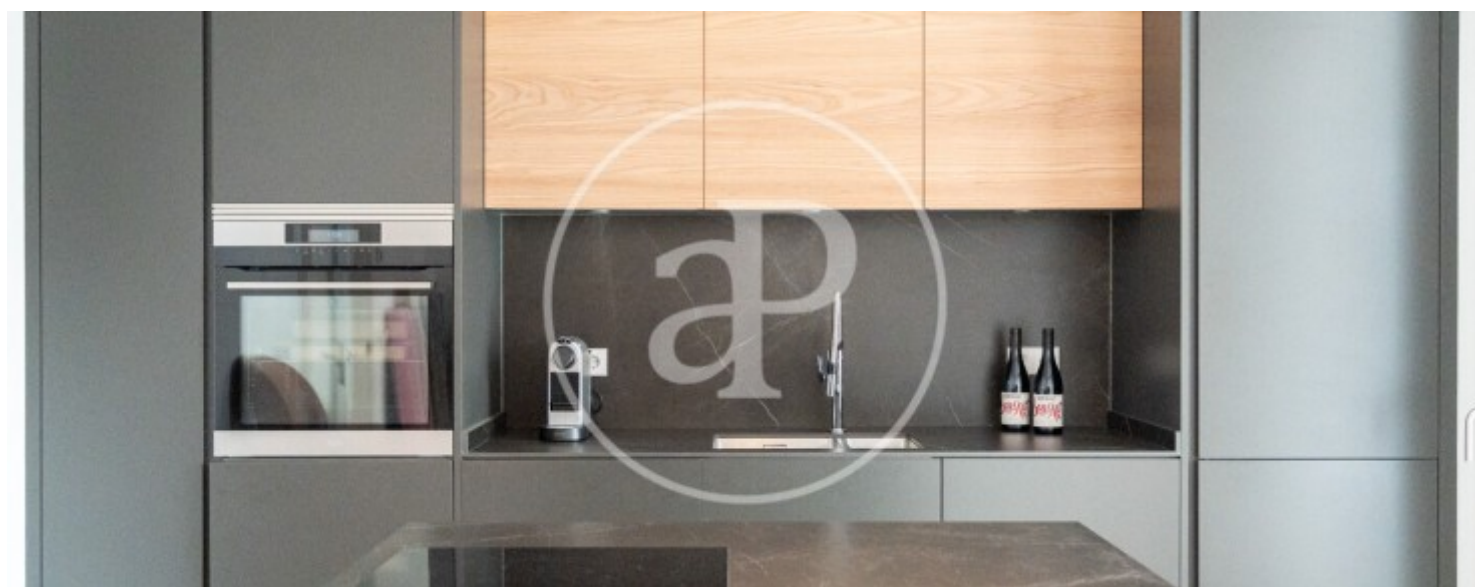
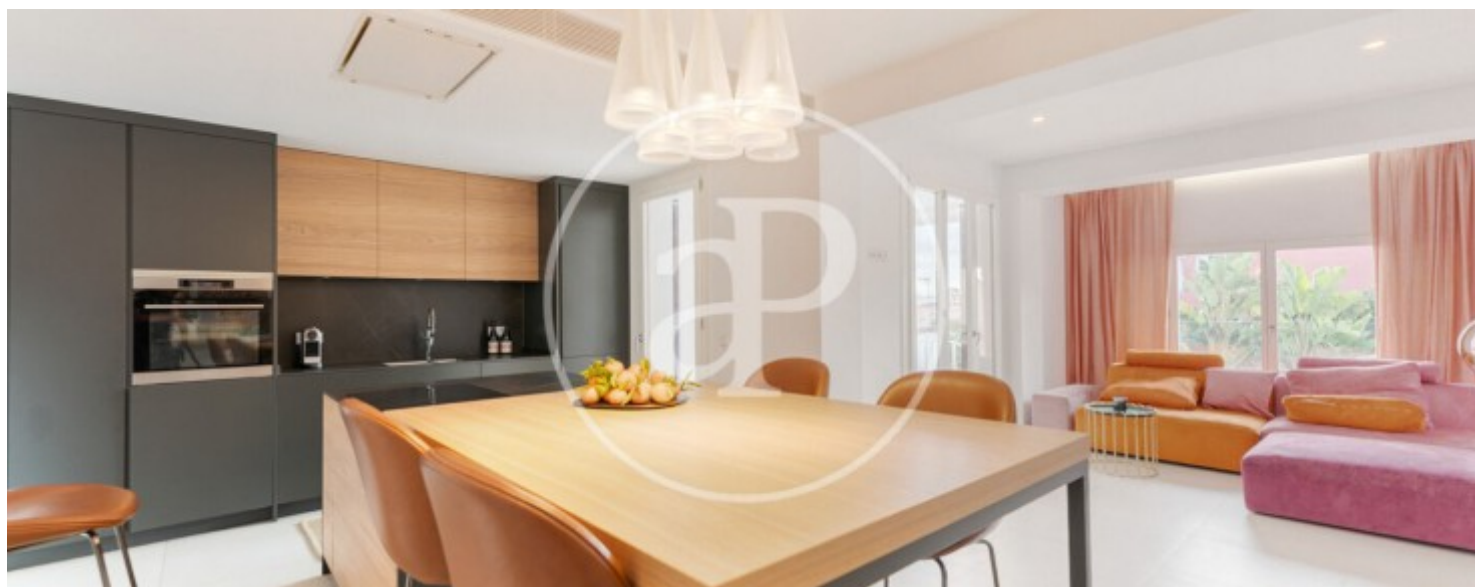
El Terreno, Palma de Mallorca

REF. VPM2511019



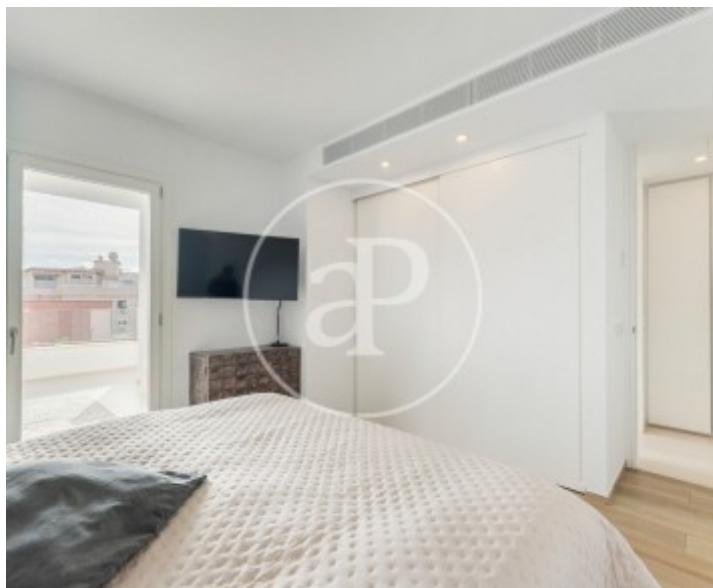
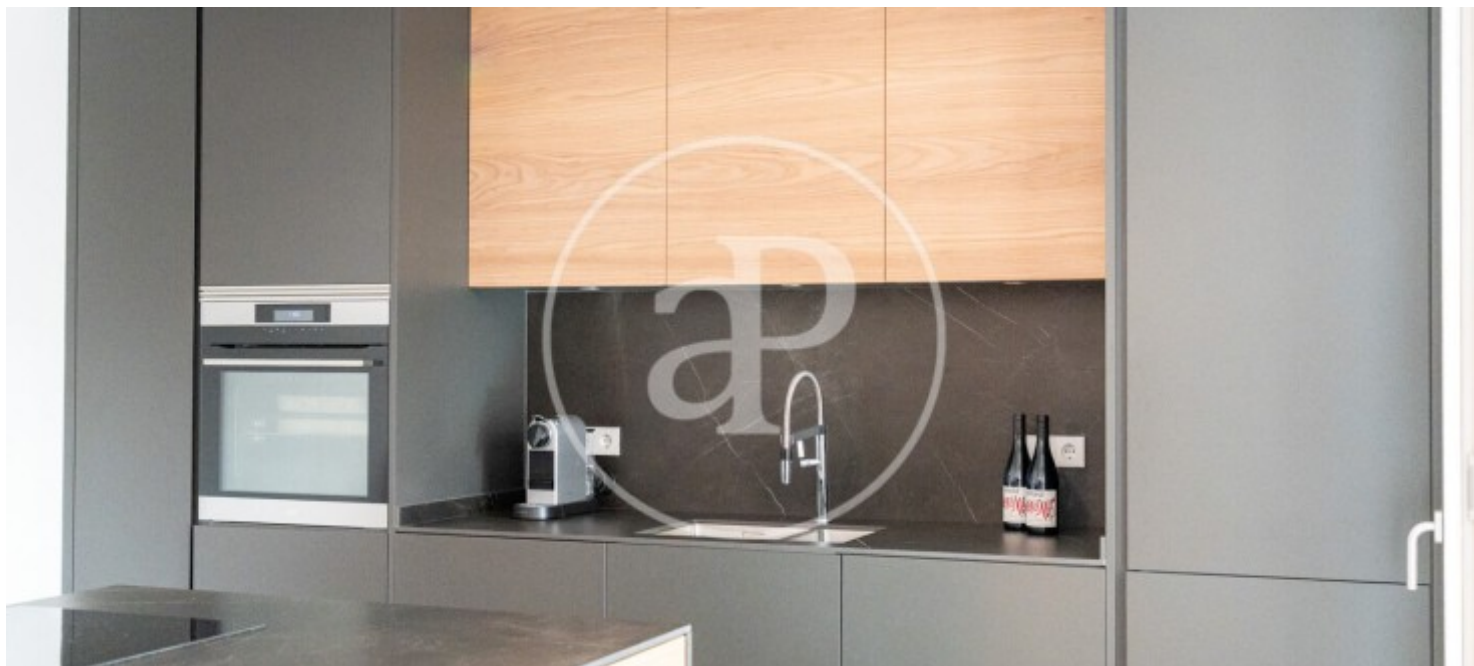
El Terreno, Palma de Mallorca

REF. VPM2511019



El Terreno, Palma de Mallorca

REF. VPM2511019



The information about any property is not binding to any offer or contract. Any verbal or written declaration made by aProperties with regards to the value or condition of the property should not be considered accurate or factual. The pictures make reference to some parts of the property at the times that they were taken. The areas, dimensions and distances that are given are approximate and should be checked by the client. The images are computer generated and are just an approximate indication of the real appearance of the property; these may change at any time. The information with regards to the property may also change at any time.

For **more information** or
to make an appointment

apropertiespalma@aproperties.es
Tel: 871 16 01 60
www.aproperties.es