

El Terreno, Palma de Mallorca

REF. APM2606022

Penthouse for rent in El Terreno

Features

- ✓ Views
- ✓ AACC
- ✓ Pool
- ✓ Lift
- ✓ Has parking
- ✓ Heating
- ✓ Terrace
- ✓ Gym
- ✓ Concierge

Price
3,200 €

Surface
120 m²

Bedrooms
3

Bathrooms
2



Located in the historic neighbourhood of El Terreno, this exclusive penthouse forms part of the innovative residential project designed by the renowned architectural firms MVRDV from the Netherlands and GRAS from Mallorca. The property offers 120 m² of built area and stands out for its generous living spaces, abundant natural light and pleasant terraces. The spacious living and dining area features a large floor-to-ceiling window opening directly onto a magnificent 20 m² terrace with open views, the perfect place to enjoy Mallorca's Mediterranean climate throughout the year. The modern open-plan kitchen is fully furnished and equipped, seamlessly connecting with the living area. In addition, the apartment benefits from a separate laundry area located on a second terrace. The sleeping area is

located on the lower floor, accessed via an internal staircase. It comprises three spacious double bedrooms and two full bathrooms. The master bedroom features an en-suite bathroom with a bathtub, while the second bathroom includes a walk-in shower. The property boasts high-quality finishes and sustainable construction materials, including parquet and porcelain tile flooring, double-glazed windows, air conditioning with heating throughout the property, and elegant neutral tones that create a bright and contemporary atmosphere. Residents enjoy access to a communal swimming pool and gym. There...

Contact us,
we will be happy to assist you,
to offer you more details and information.

El Terreno, Palma de Mallorca

REF. APM2606022



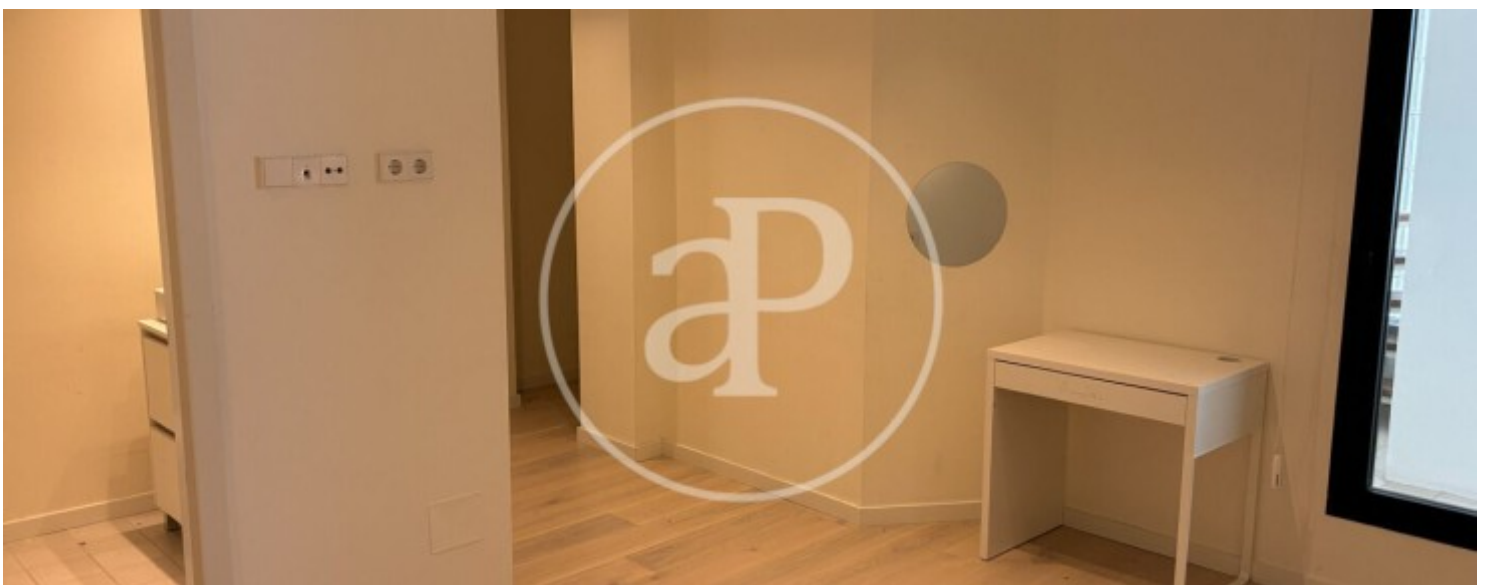
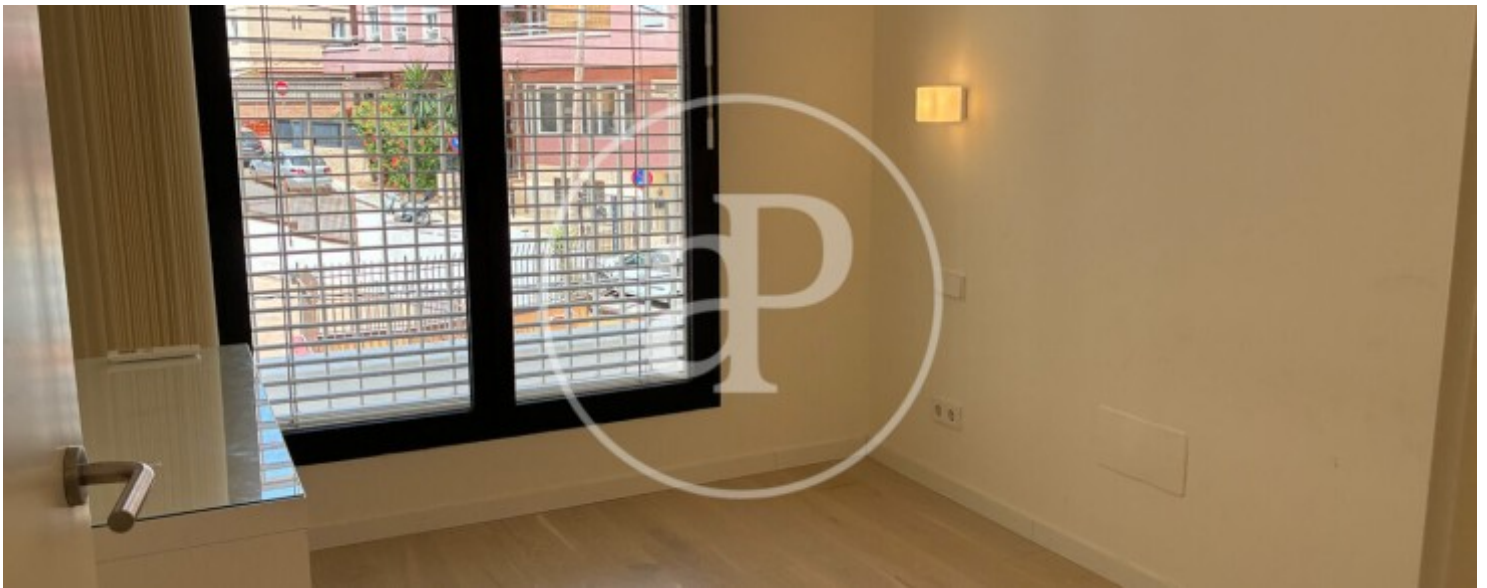
El Terreno, Palma de Mallorca

REF. APM2606022



El Terreno, Palma de Mallorca

REF. APM2606022



El Terreno, Palma de Mallorca

REF. APM2606022



The information about any property is not binding to any offer or contract. Any verbal or written declaration made by aProperties with regards to the value or condition of the property should not be considered accurate or factual. The pictures make reference to some parts of the property at the times that they were taken. The areas, dimensions and distances that are given are approximate and should be checked by the client. The images are computer generated and are just an approximate indication of the real appearance of the property; these may change at any time. The information with regards to the property may also change at any time.

For **more information** or
to make an appointment

apropertiespalma@aproperties.es
Tel: 871 16 01 60
www.aproperties.es