

Coll d'en Rabassa, Palma de Mallorca

REF. VPM2808002

Flat for sale with views in Coll d'en Rabassa (Palma de Mallorca)

Features

- ✓ Views
- ✓ Heating
- ✓ Furnished
- ✓ AACC
- ✓ Lift

Surface
70 m²

Bedroom
1

Bathroom
1

Price
420,000 €



This stylish and modern apartment is located in Ciudad Jardín, one of the most sought-after residential areas of Mallorca.

Its immediate proximity to the beach, as well as to the promenade with numerous well-known cafés and restaurants, along with closeness to the city center and the airport, make this chic apartment a true gem. The well-thought-out design leads you through a spacious living and dining area, a work corner, and accesses to the balcony and storage room, into the foyer leading to the sleeping area. The sleeping area features several spacious built-in wardrobes. It offers plenty of space for a large double bed and a beautiful view from the

French balcony. The adjoining bathroom impresses with its stylish design, including indirect LED lighting and other details that make any home lover's heart beat faster. This living experience is rounded off with parquet flooring, air conditioning, a video intercom system, and the possibility to rent a parking space directly in the building. The entire building is in very well-maintained condition, reflecting the good homeowners' community found here. This apartment is ideal both as a main residence and as a carefree holiday home on this beautiful island. Would you like...

Contact us,
we will be happy to assist you,
to offer you more details and information.

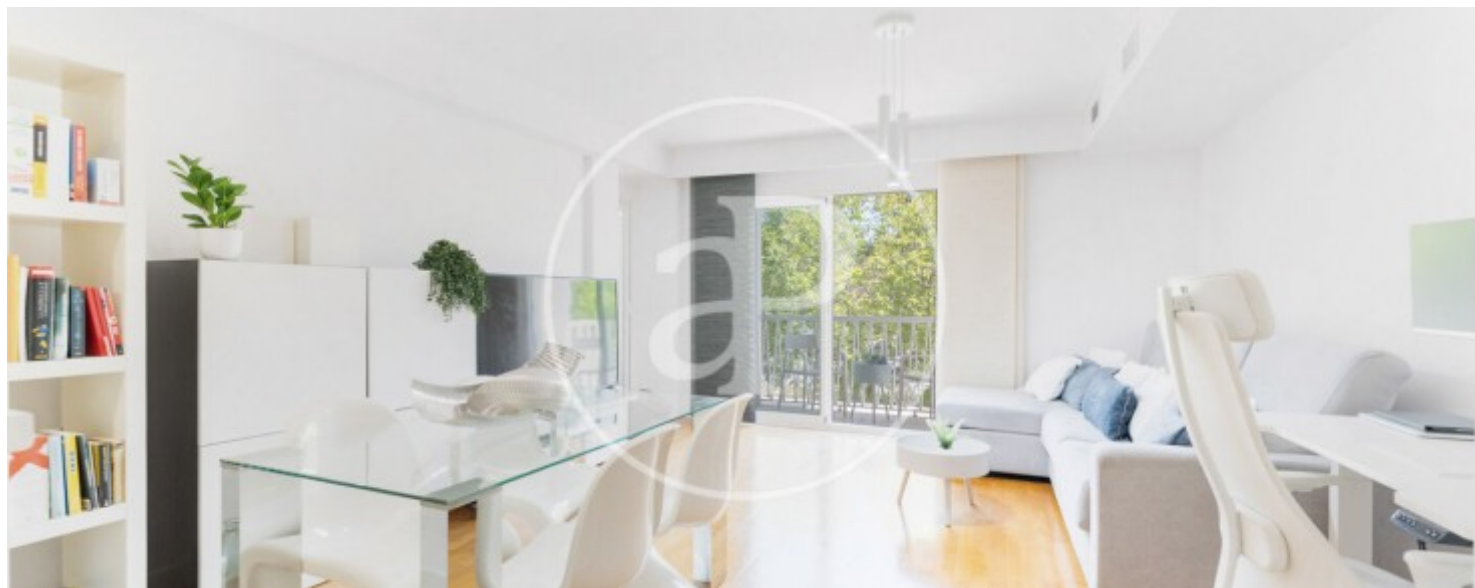
Coll d'en Rabassa, Palma de Mallorca

REF. VPM2808002



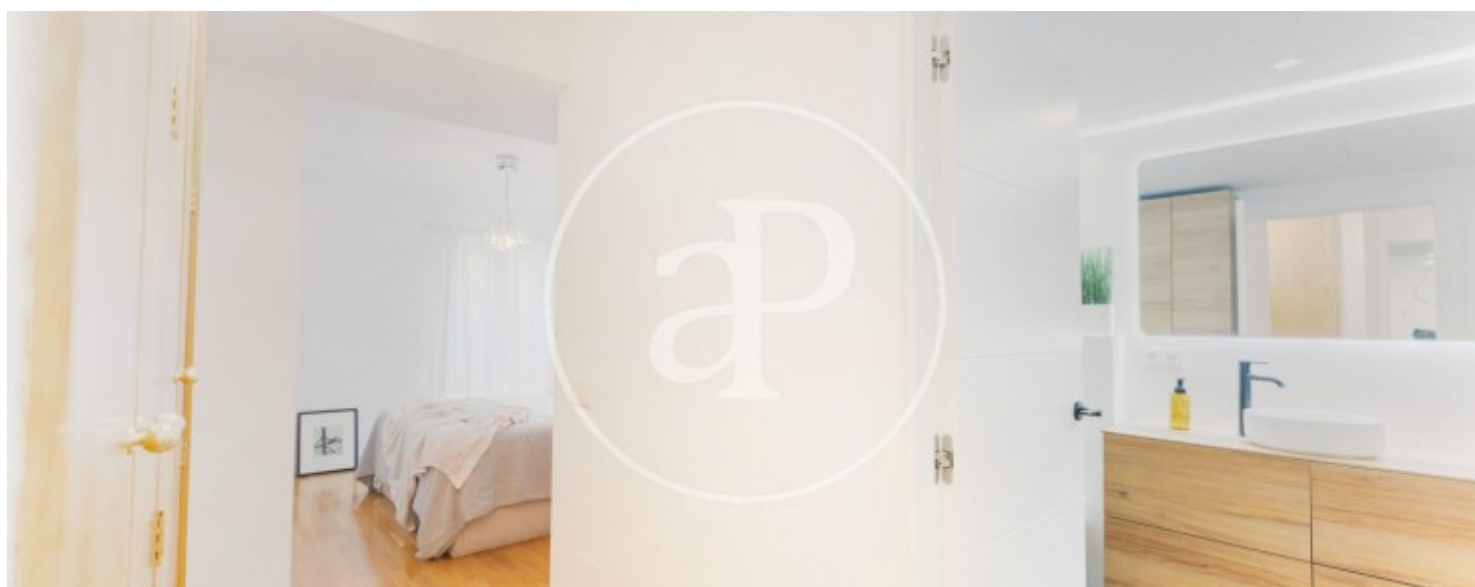
Coll d'en Rabassa, Palma de Mallorca

REF. VPM2808002



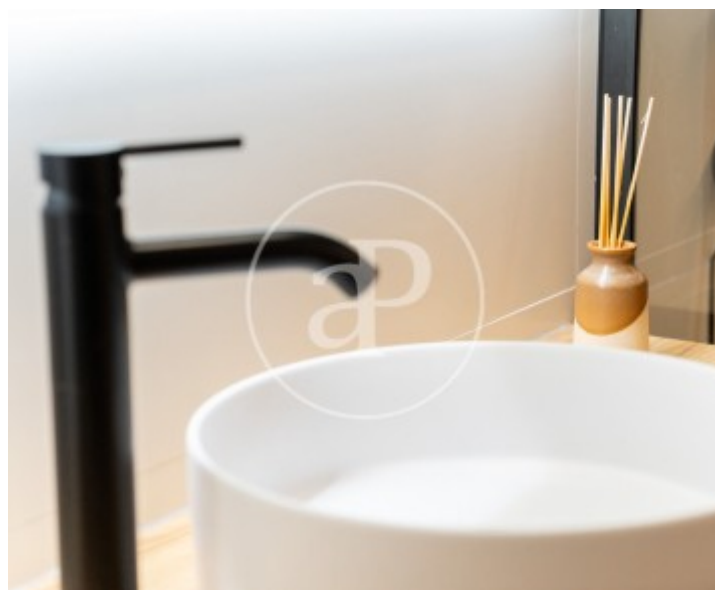
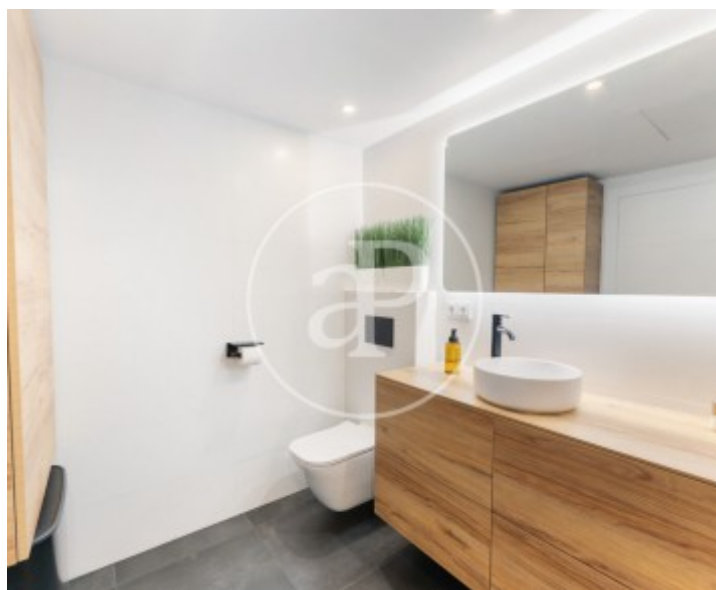
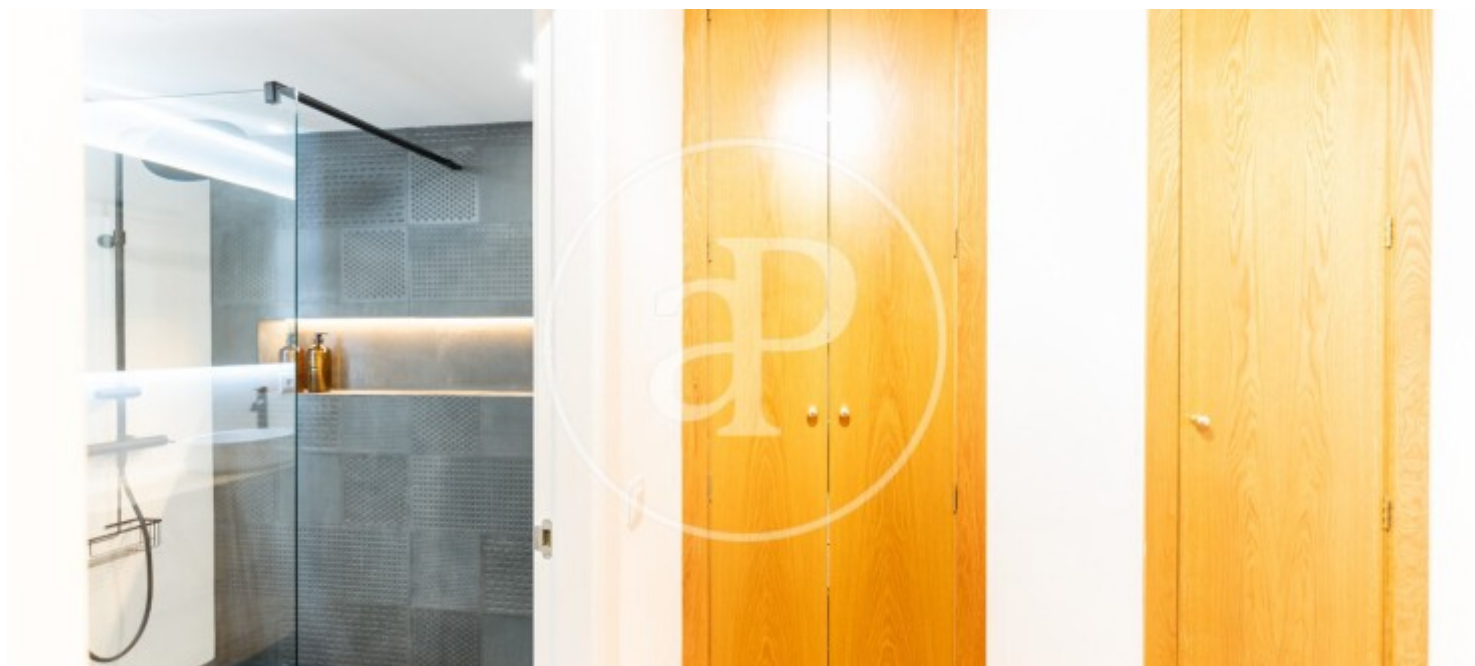
Coll d'en Rabassa, Palma de Mallorca

REF. VPM2808002



Coll d'en Rabassa, Palma de Mallorca

REF. VPM2808002



The information about any property is not binding to any offer or contract. Any verbal or written declaration made by aProperties with regards to the value or condition of the property should not be considered accurate or factual. The pictures make reference to some parts of the property at the times that they were taken. The areas, dimensions and distances that are given are approximate and should be checked by the client. The images are computer generated and are just an approximate indication of the real appearance of the property; these may change at any time. The information with regards to the property may also change at any time.

For **more information** or
to make an appointment

apropertiespalma@aproperties.es
Tel: 871 16 01 60
www.aproperties.es