



Coll d'en Rabassa, Palma de Mallorca

REF. VPM2511008

House for sale in Coll d'en Rabassa

Features

- ✓ Heating
- ✓ Boxroom
- ✓ Terrace
- ✓ Pool
- ✓ Furnished
- ✓ AACC
- ✓ Backyard
- ✓ Has parking

Price

2,625,000 €

Surface

669 m²

Bedrooms

4

Bathrooms

3



We present this beautiful traditional single-family house of 380 m² with over 280 m² of garden, full of charm and with endless possibilities.

Located in one of the most sought-after areas, just 400 meters from a spectacular beach, it combines the tranquility of a residential setting with the convenience of having shops, schools, public transport, and all services within easy reach. The property features 4 spacious bedrooms, one of them en suite with a private bathroom and a large dressing room. The fully equipped kitchen opens to a bright living room that leads to a magnificent terrace with a swimming pool and a private well connected directly to seawater,

creating a perfect space to enjoy the Mediterranean climate all year round. On the upper floor, there is another large terrace with beautiful views and multiple possibilities to adapt it to your needs. In the basement, the house offers a huge garage with space for up to four cars, a full bathroom, a cozy living area with kitchen, fireplace, and wood oven, as well as an impressive wine cellar. This space can easily be converted into an independent apartment or a leisure area ideal for family and friends. Just six minutes from Palma and a few steps from the sea, this property represents a...

Contact us,
we will be happy to assist you,
to offer you more details and information.

Coll d'en Rabassa, Palma de Mallorca

REF. VPM2511008



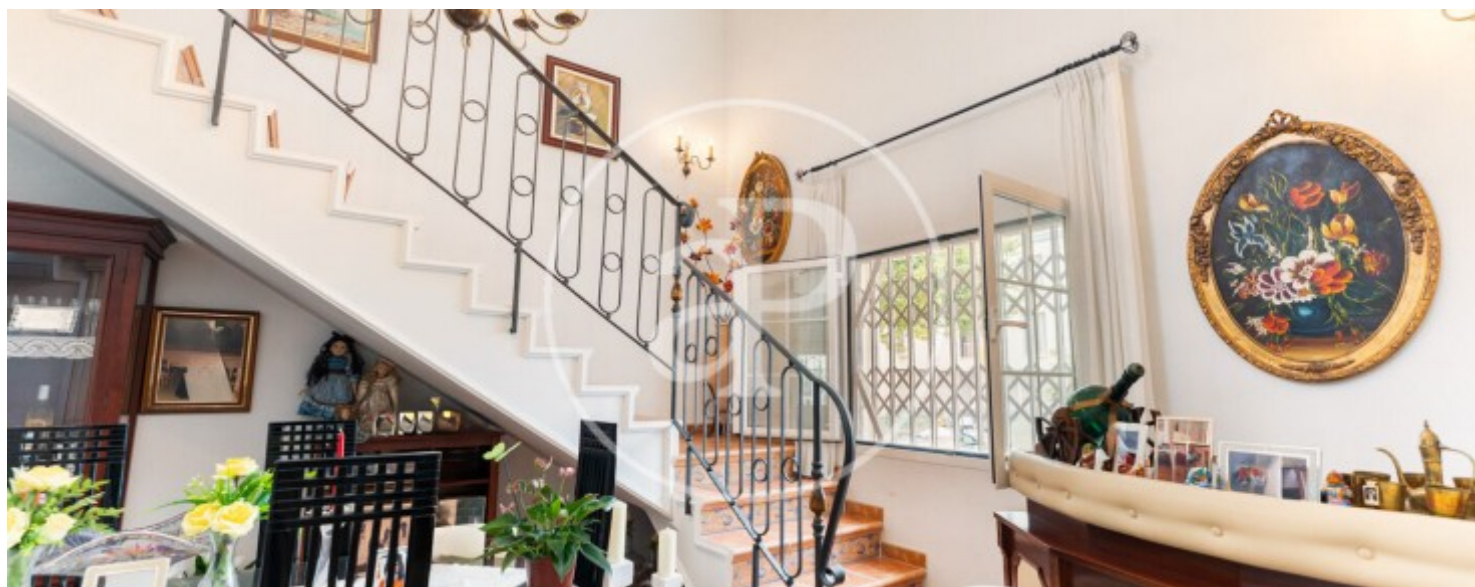
Coll d'en Rabassa, Palma de Mallorca

REF. VPM2511008



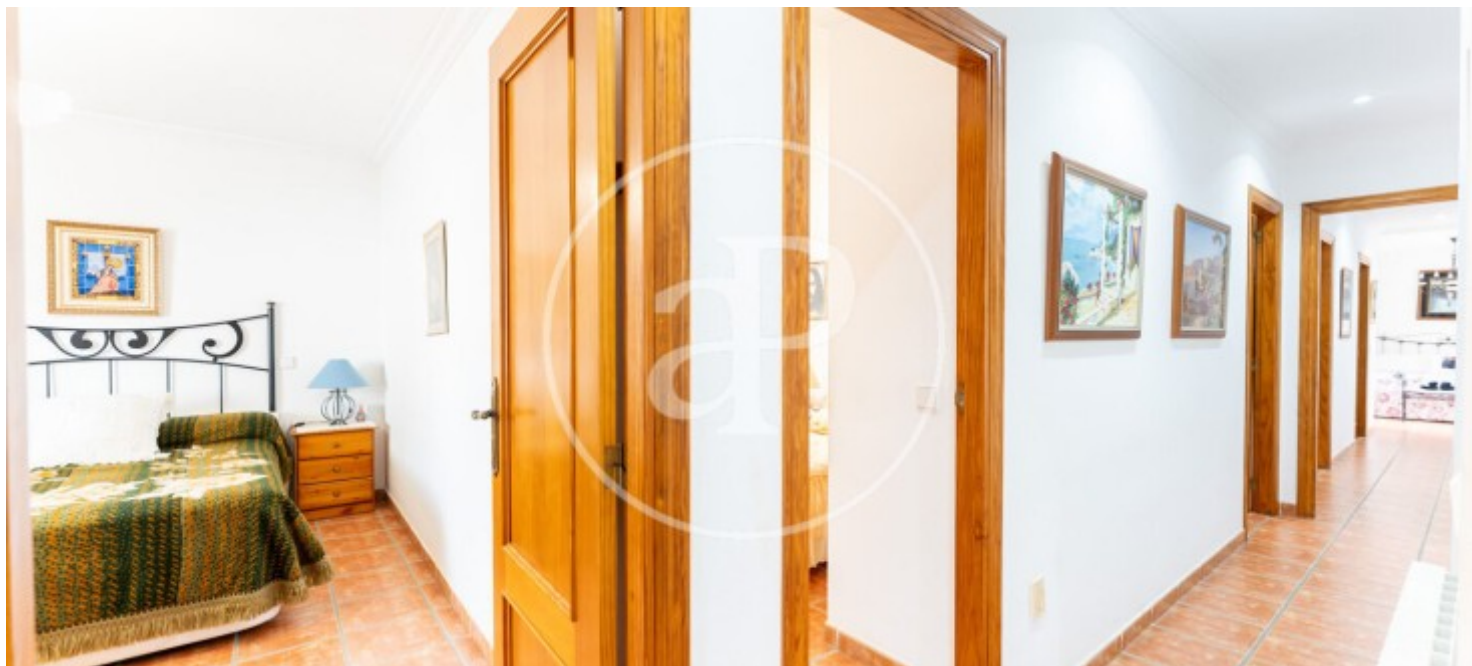
Coll d'en Rabassa, Palma de Mallorca

REF. VPM2511008



Coll d'en Rabassa, Palma de Mallorca

REF. VPM2511008



The information about any property is not binding to any offer or contract. Any verbal or written declaration made by aProperties with regards to the value or condition of the property should not be considered accurate or factual. The pictures make reference to some parts of the property at the times that they were taken. The areas, dimensions and distances that are given are approximate and should be checked by the client. The images are computer generated and are just an approximate indication of the real appearance of the property; these may change at any time. The information with regards to the property may also change at any time.

For **more information** or
to make an appointment

apropertiespalma@aproperties.es
Tel: 871 16 01 60
www.aproperties.es