

Ciudad Jardín, Palma de Mallorca

REF. VPM2308007



Apartment for sale with terrace in Ciudad Jardín

Features

- ✓ Views
- ✓ Heating
- ✓ Boxroom
- ✓ AACC
- ✓ Pool
- ✓ Lift
- ✓ Has parking

Price

1,290,000 €

Surface

180 m²

Bedrooms

3

Bathrooms

3



Splendid brand new duplex penthouse with terrace and panoramic views in the prestigious area of Ciudad Jardín.

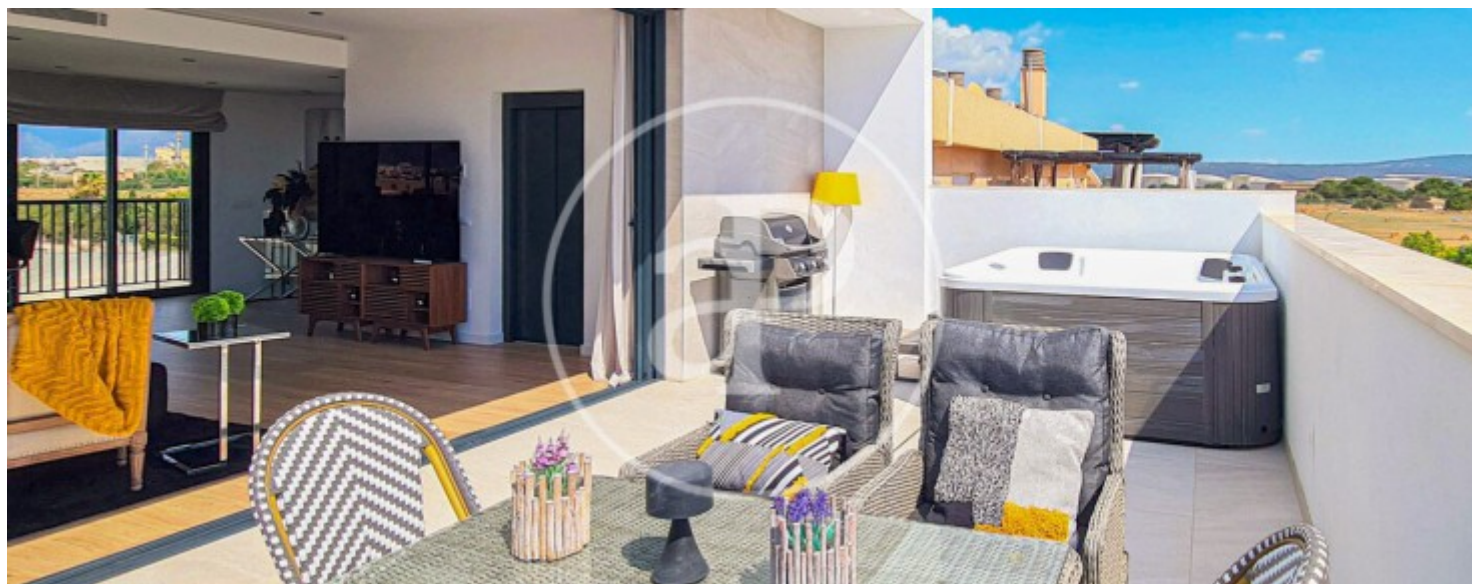
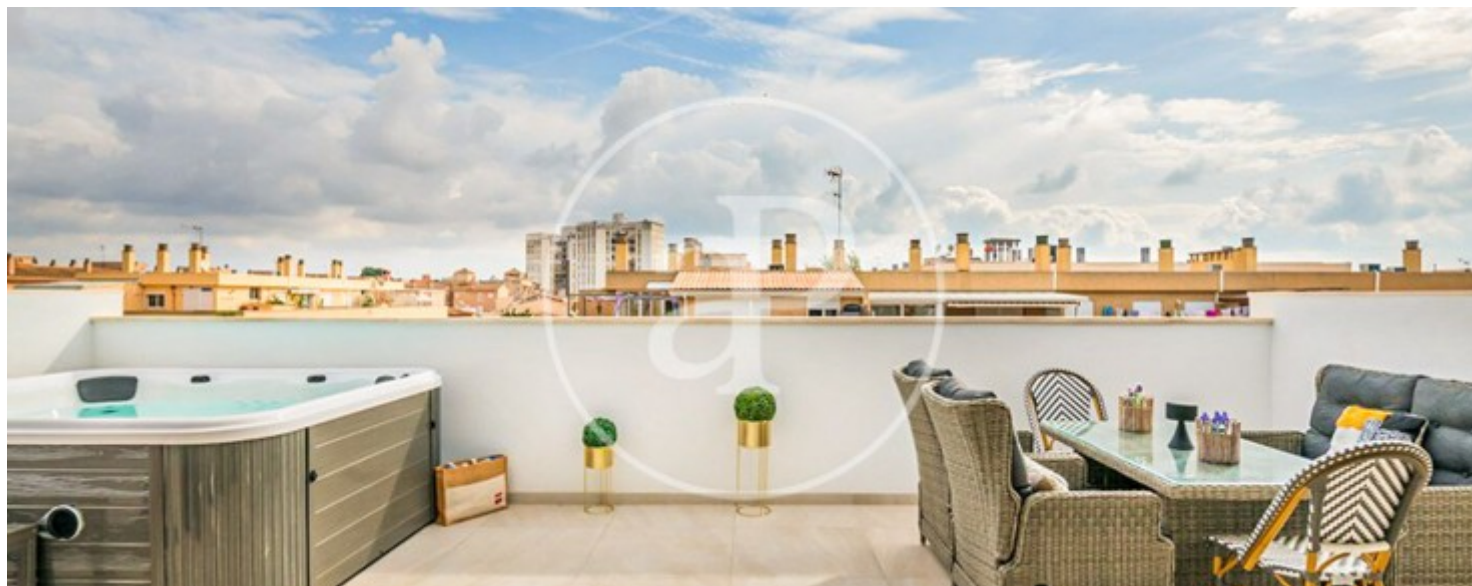
Immerse yourself in the luxury and comfort of this exceptional two-level property, where elegance merges with contemporary design. With direct lift access to the main living area, this residence redefines the concept of grand living. On the upper floor, a generous, light-flooded living and dining room intertwines with a modern, fully equipped kitchen, creating a perfect space for entertaining and everyday comfort. An elegant cloakroom completes this floor, catering to your every need in style. Sliding doors in the spacious living

room unfold majestically, opening onto an expansive terrace that presents itself as a private oasis. Here, immerse yourself in the serenity of a 6-person whirlpool while reveling in unobstructed panoramic views that captivate the senses. Three double bedrooms with fitted wardrobes await you on the lower floor, one of them with its own en suite bathroom of refined design. A second luxuriously appointed bathroom serves the other two bedrooms, providing unparalleled comfort. The laundry room and access to the lower level of the home add an extra dose of practicality. Created for...

Contact us,
we will be happy to assist you,
to offer you more details and information.

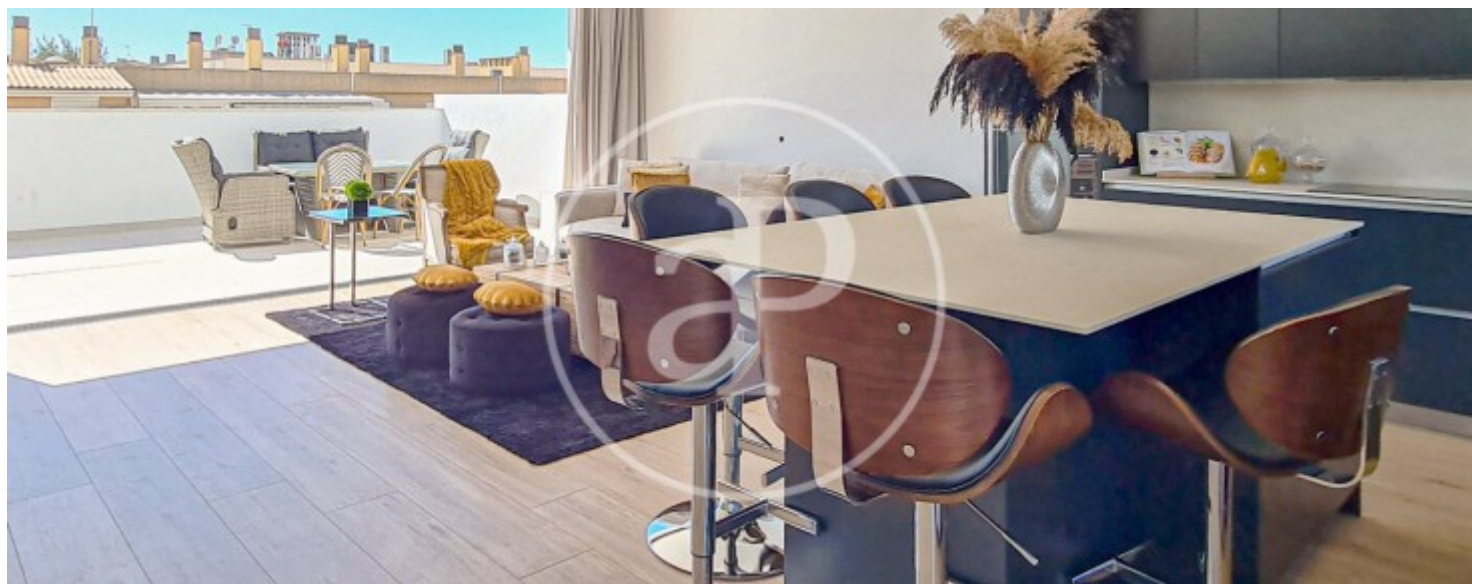
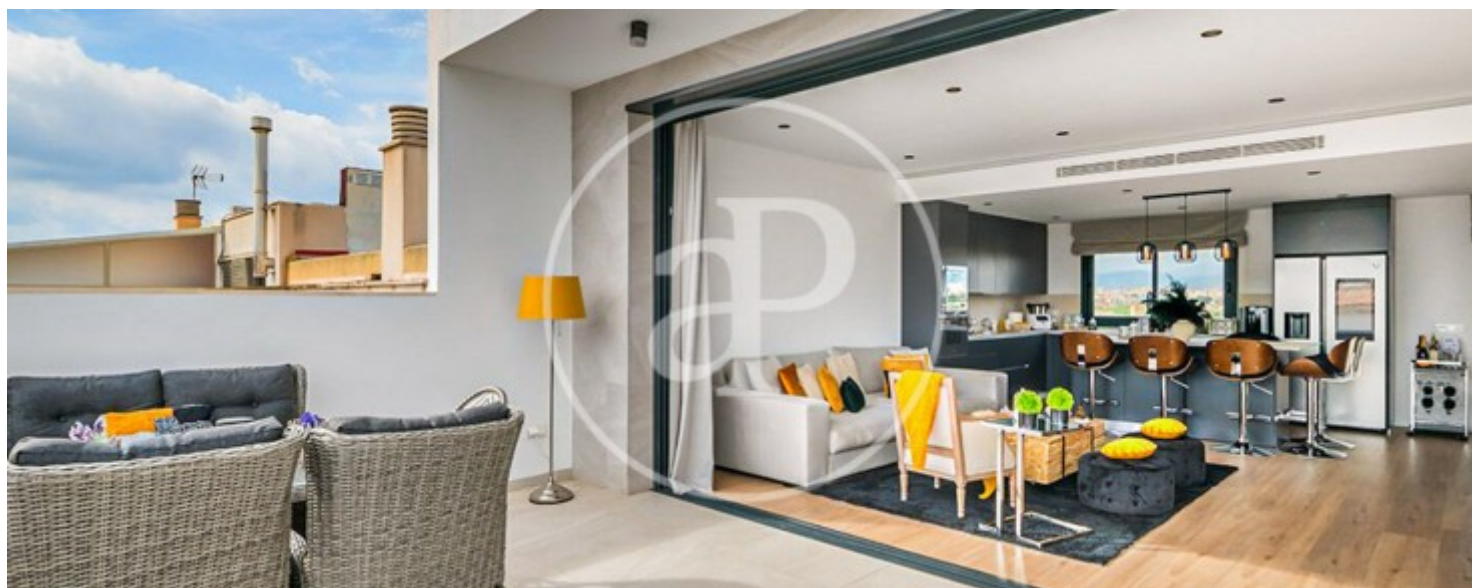
Ciudad Jardín, Palma de Mallorca

REF. VPM2308007



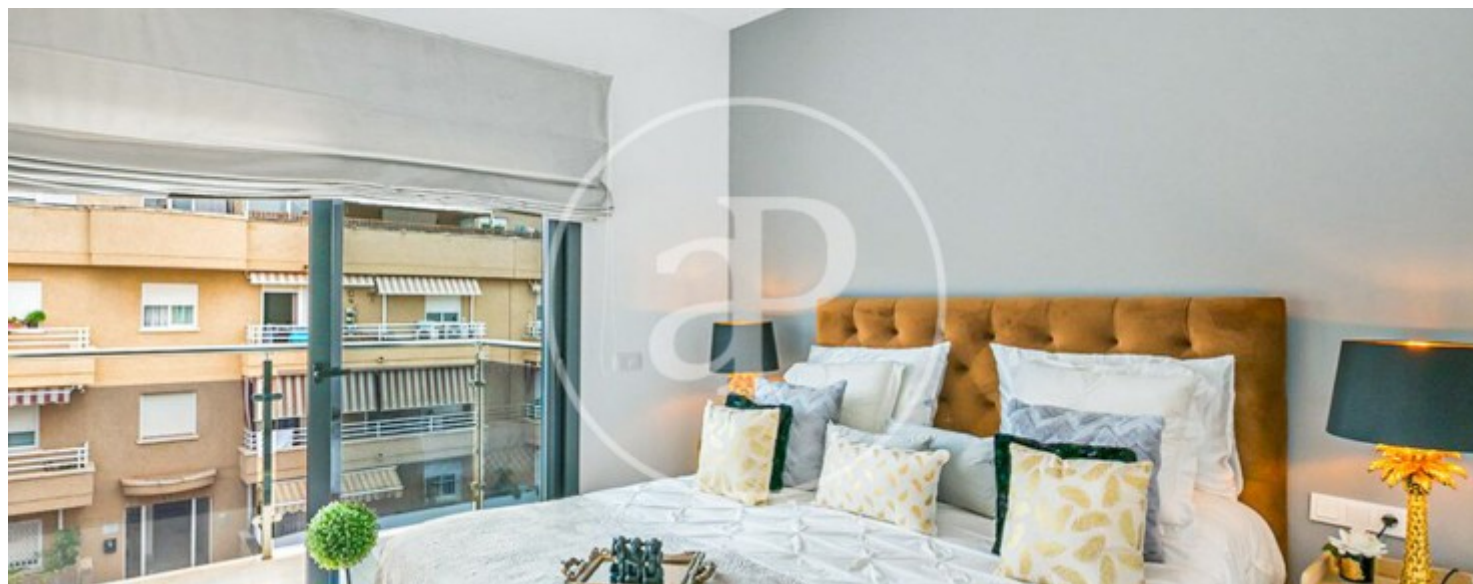
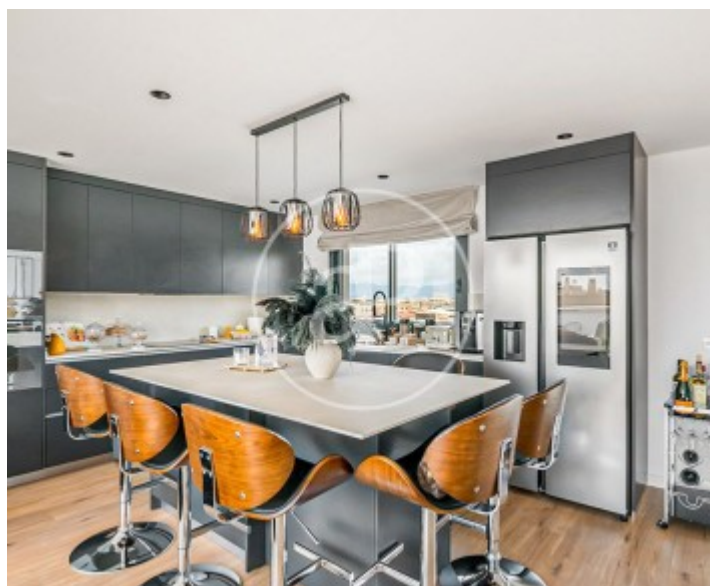
Ciudad Jardín, Palma de Mallorca

REF. VPM2308007



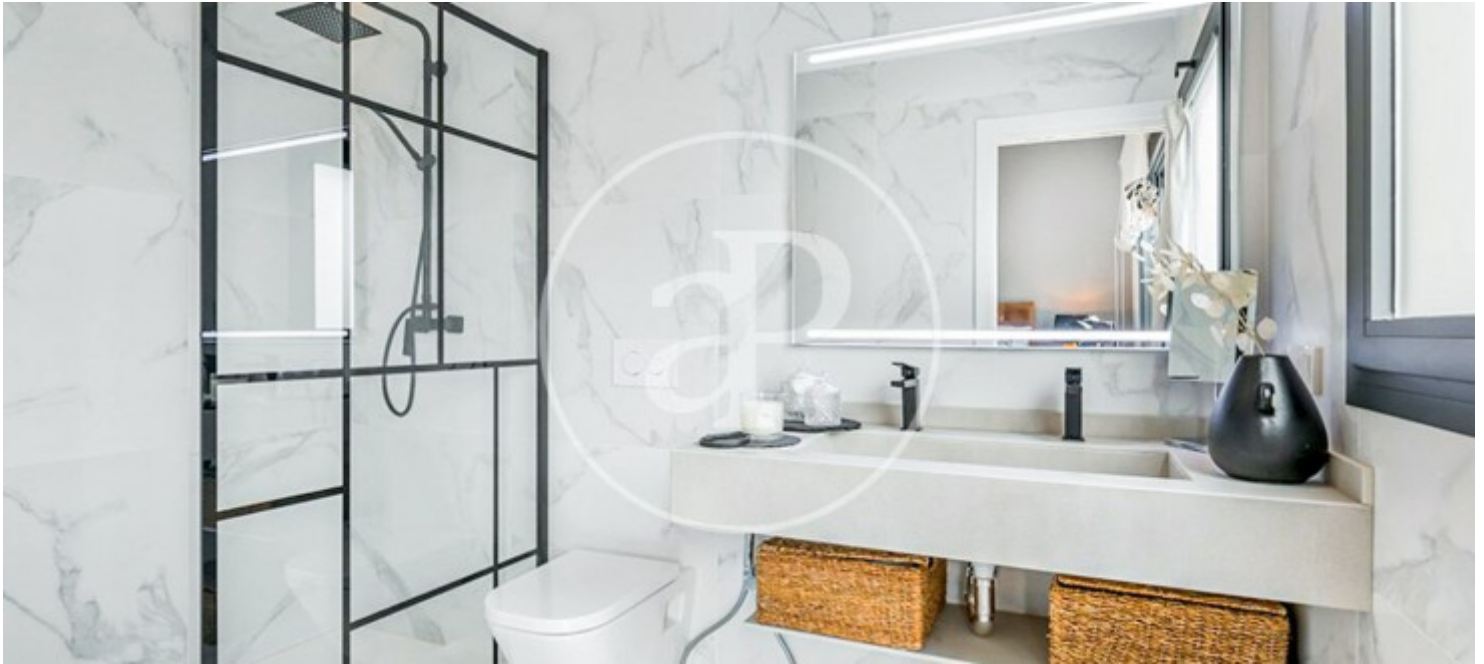
Ciudad Jardín, Palma de Mallorca

REF. VPM2308007



Ciudad Jardín, Palma de Mallorca

REF. VPM2308007



The information about any property is not binding to any offer or contract. Any verbal or written declaration made by aProperties with regards to the value or condition of the property should not be considered accurate or factual. The pictures make reference to some parts of the property at the times that they were taken. The areas, dimensions and distances that are given are approximate and should be checked by the client. The images are computer generated and are just an approximate indication of the real appearance of the property; these may change at any time. The information with regards to the property may also change at any time.



For **more information** or
to make an appointment

apropertiespalma@aproperties.es
Tel: 871 16 01 60
www.aproperties.es