

Ciudad Jardín, Palma de Mallorca

REF. APM2308016



## Duplex penthouse for rent with terrace and jacuzzi in Ciudad Jardín

### Features

- ✓ Furnished
- ✓ Terrace
- ✓ Has parking
- ✓ AACC
- ✓ Lift

Price

**8,000 €**

Surface

**180 m<sup>2</sup>**

Bedrooms

**3**

Bathrooms

**3**



**Immerse yourself in the luxury and comfort of this exceptional two-level property located in Ciudad Jardín, where elegance merges with contemporary design.**

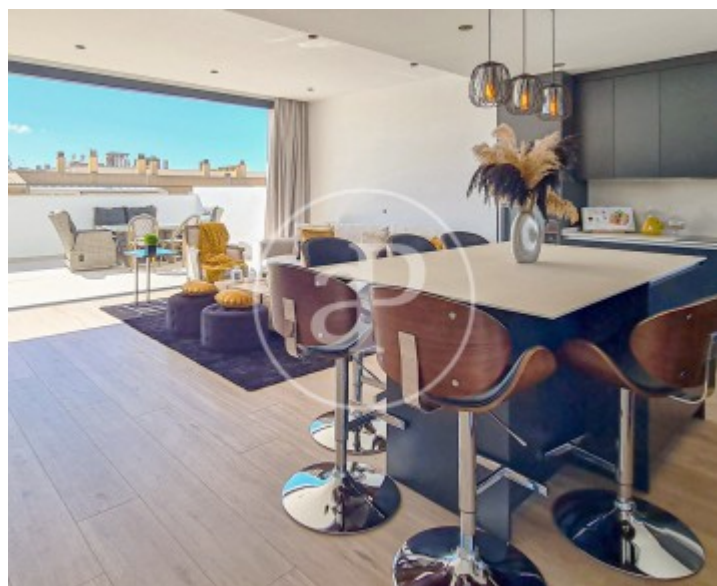
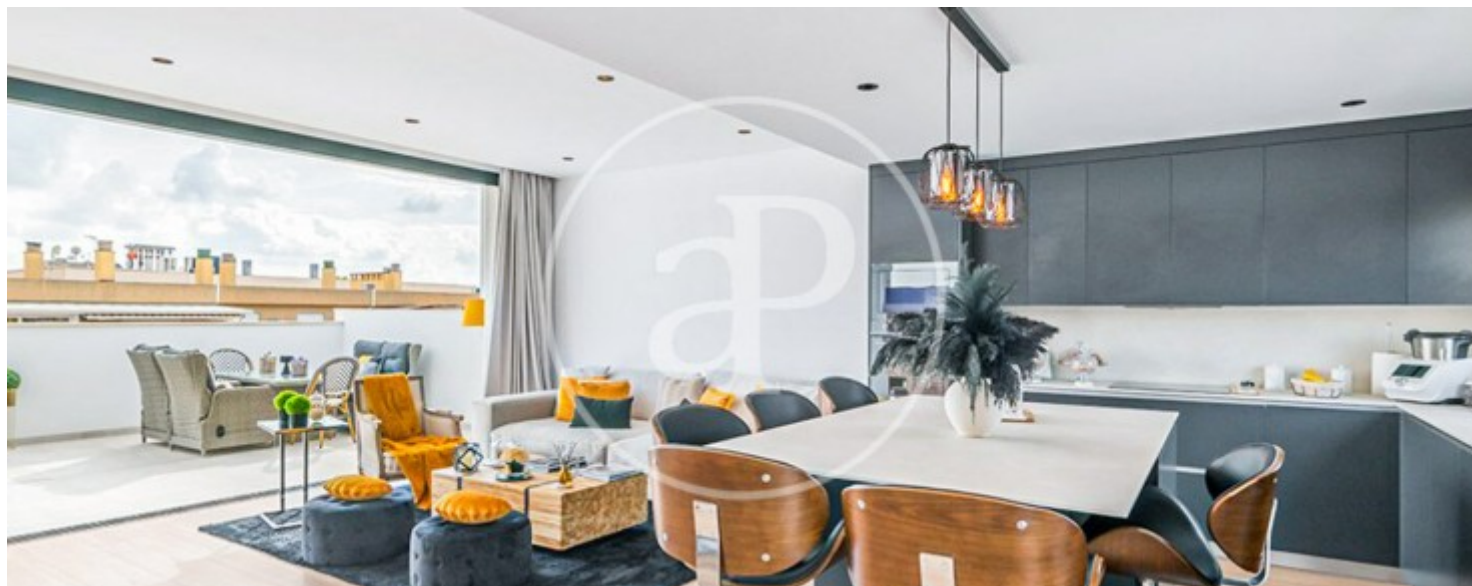
On the upper floor is a bright living and dining room with a fully equipped modern kitchen, creating a perfect space for entertaining and everyday comfort. An elegant cloakroom completes this floor, catering to your every need in style. Sliding doors from the spacious living room open majestically, opening onto a terrace that presents itself as a private oasis. The terrace features a whirlpool with seating for up to six people as you revel in unobstructed panoramic views that captivate the senses. Three

double bedrooms with fitted wardrobes await you downstairs, one with its own en-suite bathroom. A second luxuriously appointed bathroom serves the other two bedrooms, providing unparalleled comfort. The utility room and access to the lower level of the home add an extra dose of practicality. Enjoy LED lighting that enhances the atmosphere, electric blinds that provide privacy with a touch, and SMEG appliances that set the standard for elegance and functionality. Maintain a perfect temperature all year round with the sectorised hot/cold air conditioning system. It has a parking space included...

**Contact us,**  
we will be happy to assist you,  
to offer you more details and information.

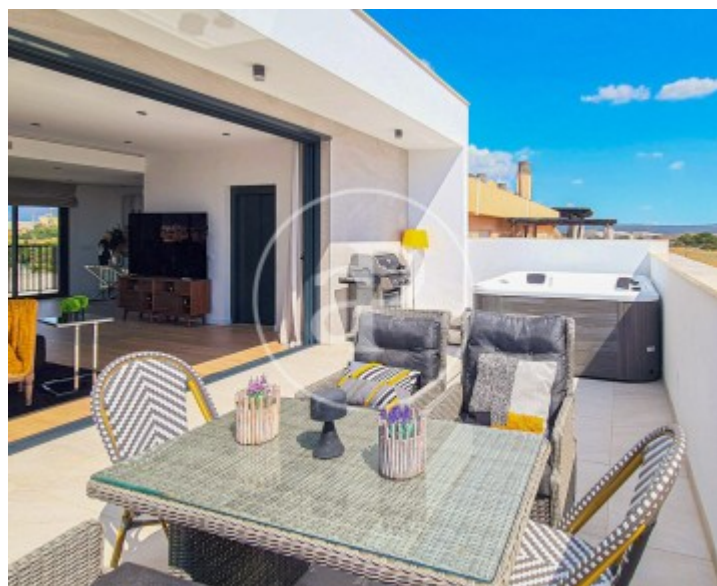
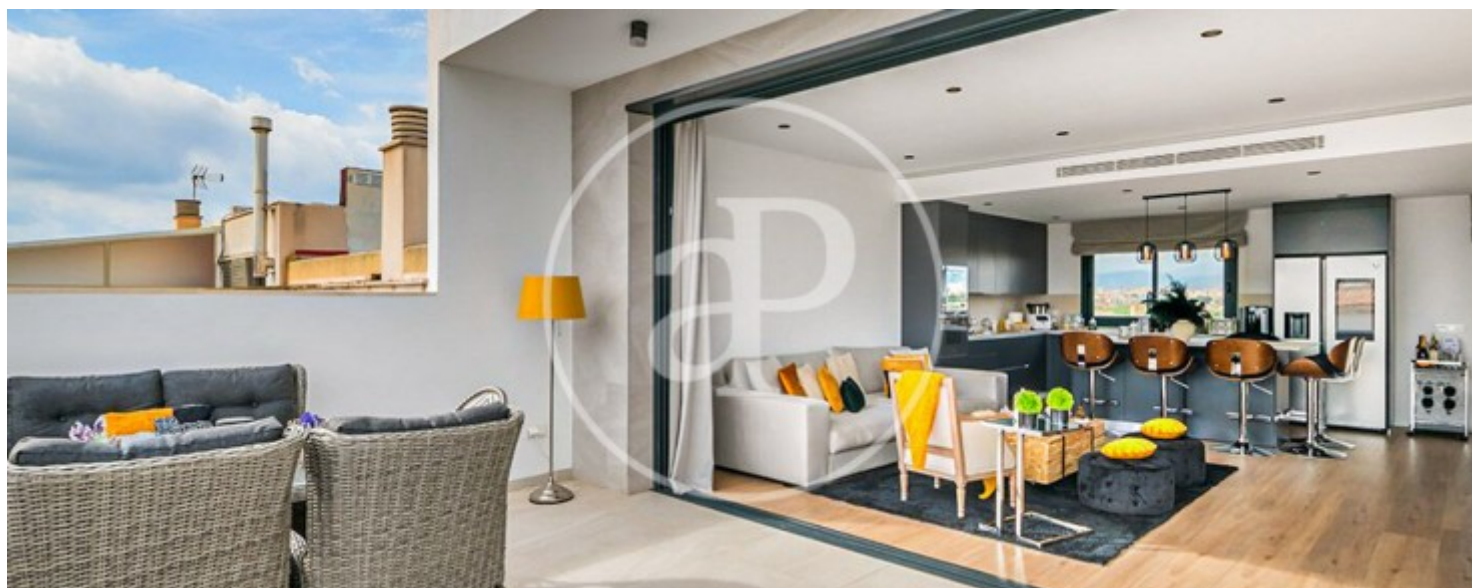
Ciudad Jardín, Palma de Mallorca

REF. APM2308016



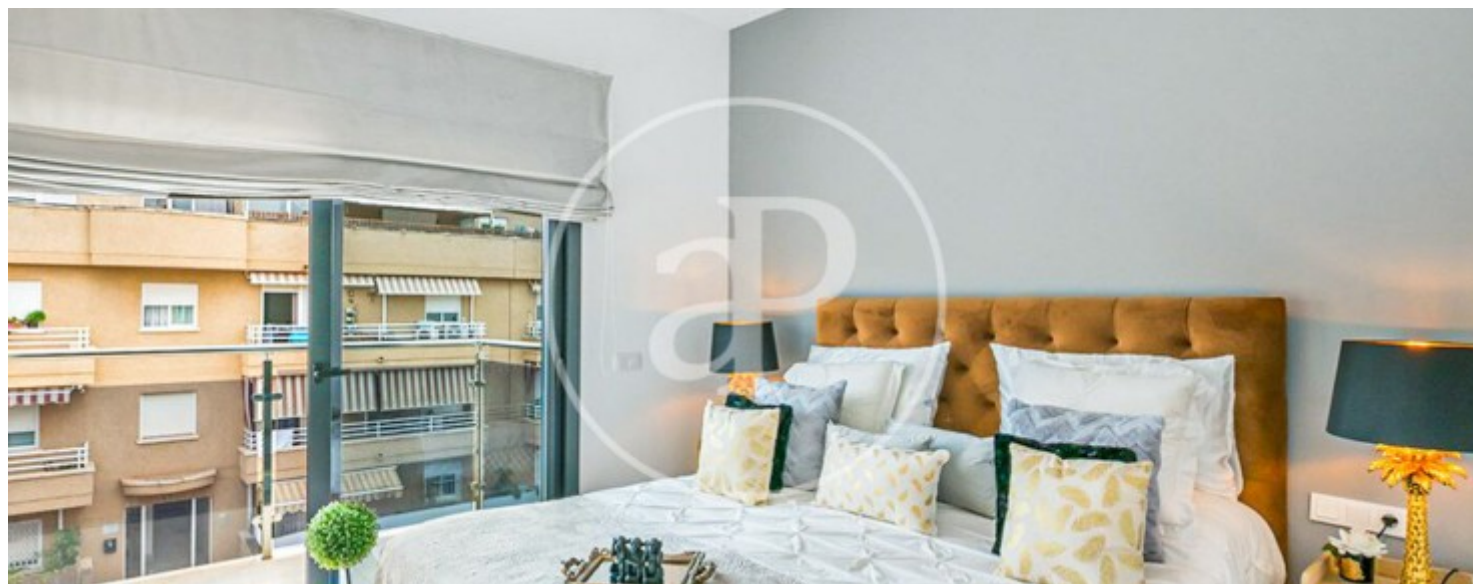
Ciudad Jardín, Palma de Mallorca

REF. APM2308016



Ciudad Jardín, Palma de Mallorca

REF. APM2308016





**APROPERTIES**  
REAL ESTATE

Calle Unió 9  
07001 Palma  
T. 871 16 01 60  
[www.aproperties.es](http://www.aproperties.es)

Ciudad Jardín, Palma de Mallorca

REF. APM2308016



The information about any property is not binding to any offer or contract. Any verbal or written declaration made by aProperties with regards to the value or condition of the property should not be considered accurate or factual. The pictures make reference to some parts of the property at the times that they were taken. The areas, dimensions and distances that are given are approximate and should be checked by the client. The images are computer generated and are just an approximate indication of the real appearance of the property; these may change at any time. The information with regards to the property may also change at any time.



For **more information** or  
to make an appointment

[apropertiespalma@aproperties.es](mailto:apropertiespalma@aproperties.es)  
Tel: 871 16 01 60  
[www.aproperties.es](http://www.aproperties.es)