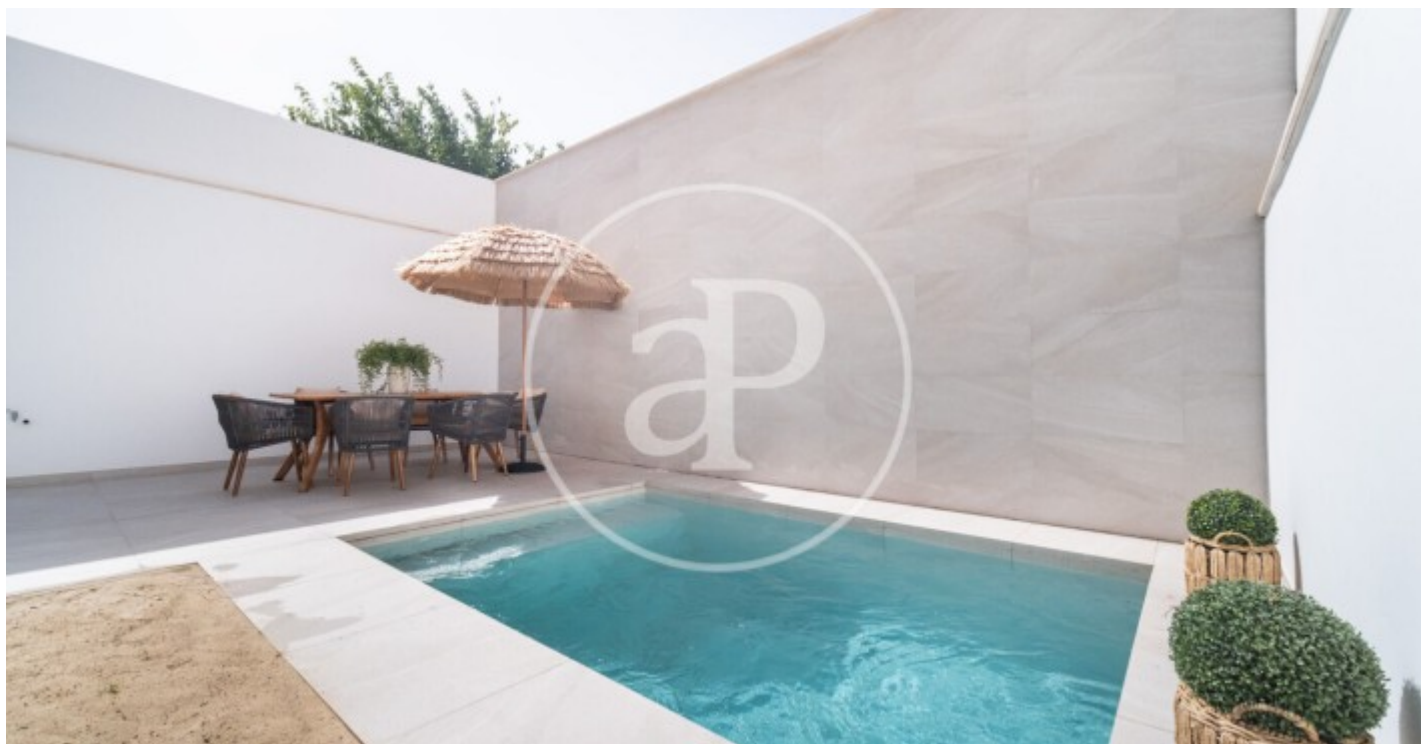


(Ciudad Jardín)

Ref: VPM2309021



Apartment for sale in Ciudad Jardin

Welcome to this gem of a property for sale, a dazzling building in the sought after area of the city. Each apartment is a masterpiece of design, where every detail has been carefully selected to provide an exceptional living experience. The ground floor duplex is a 128 square metre living marvel, embraced by a 78 square metre terrace overlooking a private swimming pool. Two bedrooms, one with a charming dressing room, three bathrooms, a cinema room and a kitchen that opens onto the living-dining room create a space that throbs with the essence of home. Apartments A and B on the first floor, while more intimate, are equally captivating. With their 41 square metres each and balconies that invite you to contemplate the cityscape, they offer a corner of peace and serenity. A bedroom, a bathroom and a kitchen that integrate harmoniously with the living-dining room, give life to these cosy spaces. The duplex penthouse, a true work of architectural art, rises majestically with its 180 square metres. A private lift takes you directly to a spacious living-dining room decorated with elegance and attention to detail. From here, a 35 square metre open terrace and balconies overlooking the s [...]

Palma de Mallorca / Ciudad Jardín

Unit 1 A

Completion Q3 2023

FEATURES

Surface 41 m² / 2 m² terrace

1 Rooms

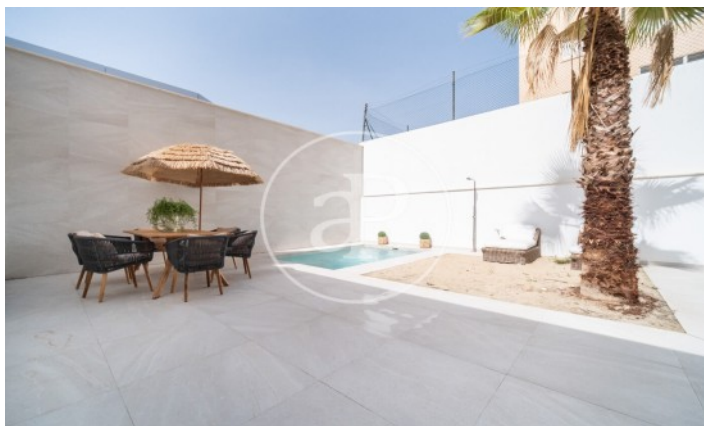
1 Toilets

- ✓ Views
- ✓ Heating
- ✓ AACC
- ✓ Terrace
- ✓ Backyard
- ✓ Pool
- ✓ Lift
- ✓ Has parking

PRICE UPON REQUEST

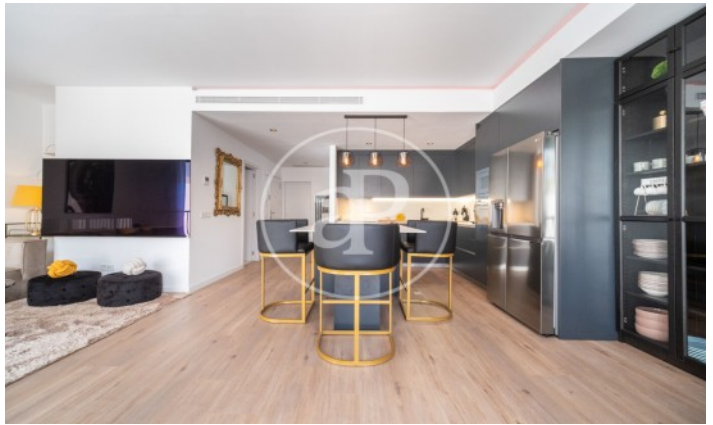
(Ciudad Jardín)

Ref: VPM2309021



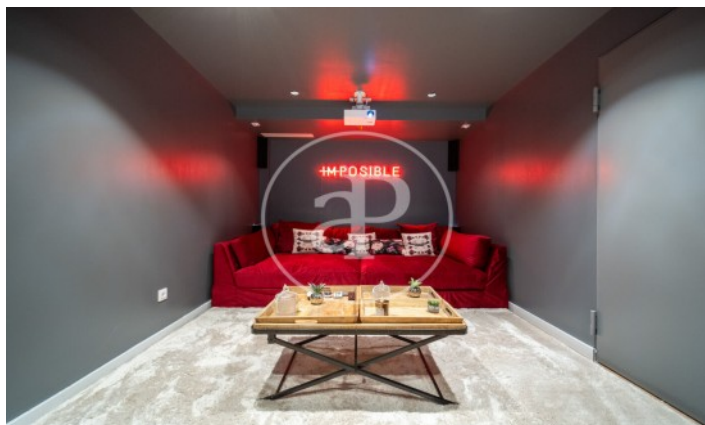
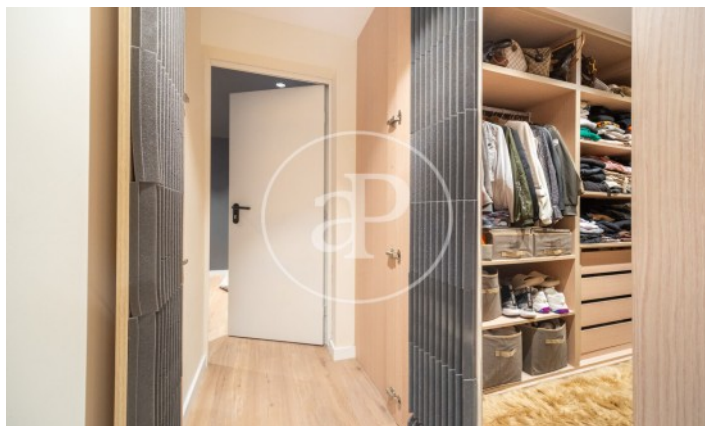
(Ciudad Jardín)

Ref: VPM2309021



(Ciudad Jardín)

Ref: VPM2309021



The information about any property is not binding to any offer or contract. Any verbal or written declaration made by aProperties with regards to the value or condition of the property should not be considered accurate or factual. The pictures make reference to some parts of the property at the times that they were taken. The areas, dimensions and distances that are given are approximate and should be checked by the client. The images are computer generated and are just an approximate indication of the real appearance of the property; these may change at any time. The information with regards to the property may also change at any time.

Contact us today for more information or to arrange a viewing

Tel: 871 16 01 60

apropertiespalma@aproperties.es

<https://www.aproperties.es>