

Ciudad Jardín, Palma de Mallorca

REF. APM2604008

Apartment for rent in Ciudad Jardín

Features

- ✓ Views
- ✓ Heating
- ✓ Boxroom
- ✓ AACC
- ✓ Terrace
- ✓ Lift
- ✓ Has parking

Surface

72 m²

Bedrooms

2

Bathrooms

2



Price

2,500 €

Located in one of the most pleasant and sought-after areas of Palma, this fantastic apartment in Ciudad Jardín is a perfect opportunity for those looking for quality of life by the sea with a long-term rental. The property stands out for its abundant natural light and the sense of spaciousness in every room. The living room, large and inviting, opens onto a charming small balcony from which you can enjoy spectacular sea views—an ideal spot to start the day or unwind at sunset. It features two bedrooms: a more spacious master bedroom and a second room perfect as an additional bedroom, office, or guest room. The apartment also offers two full bathrooms, providing comfort and practicality for everyday living. The separate kitchen is fully equipped with appliances and ready to move in. The apartment

is rented unfurnished, offering the opportunity to adapt it entirely to your style and needs. As an added value, the property includes a parking space and a storage room—highly sought-after features in the area that provide extra convenience. A bright, well-distributed home with privileged sea views, set in a ??? yet well-connected environment just minutes from Palma's city center. Ideal for those who want to live by the sea without giving up city life.

Contact us,
we will be happy to assist you,
to offer you more details and information.

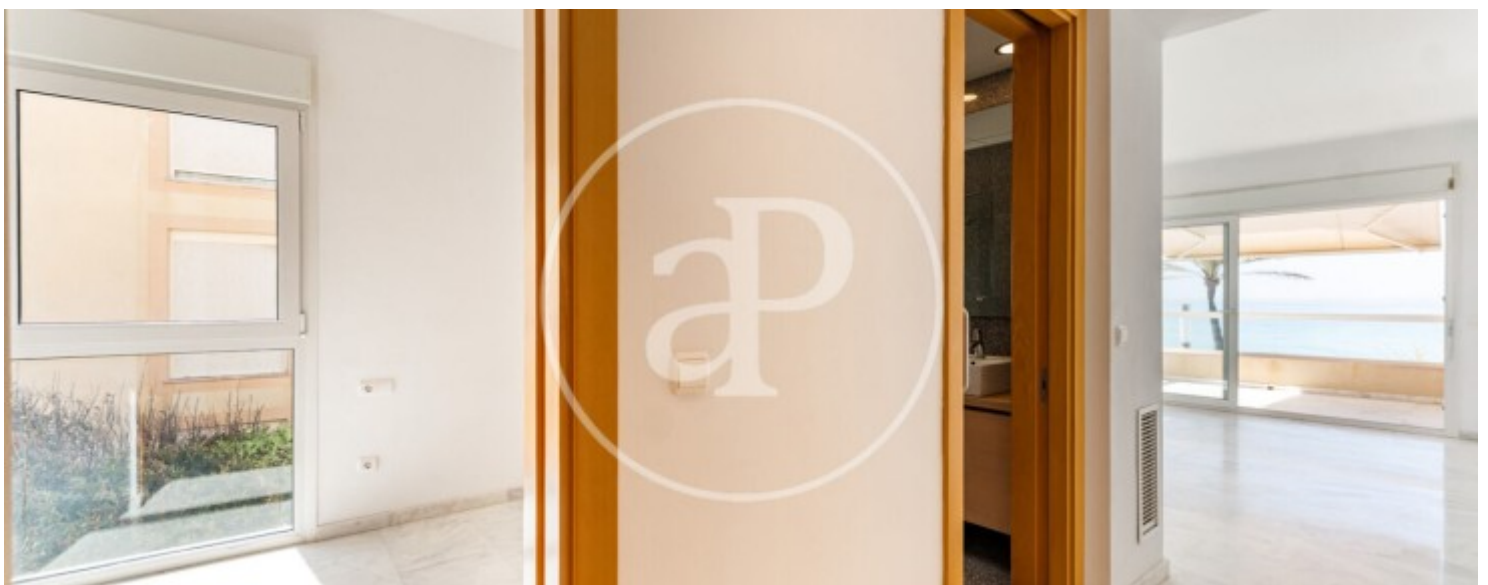
Ciudad Jardín, Palma de Mallorca

REF. APM2604008



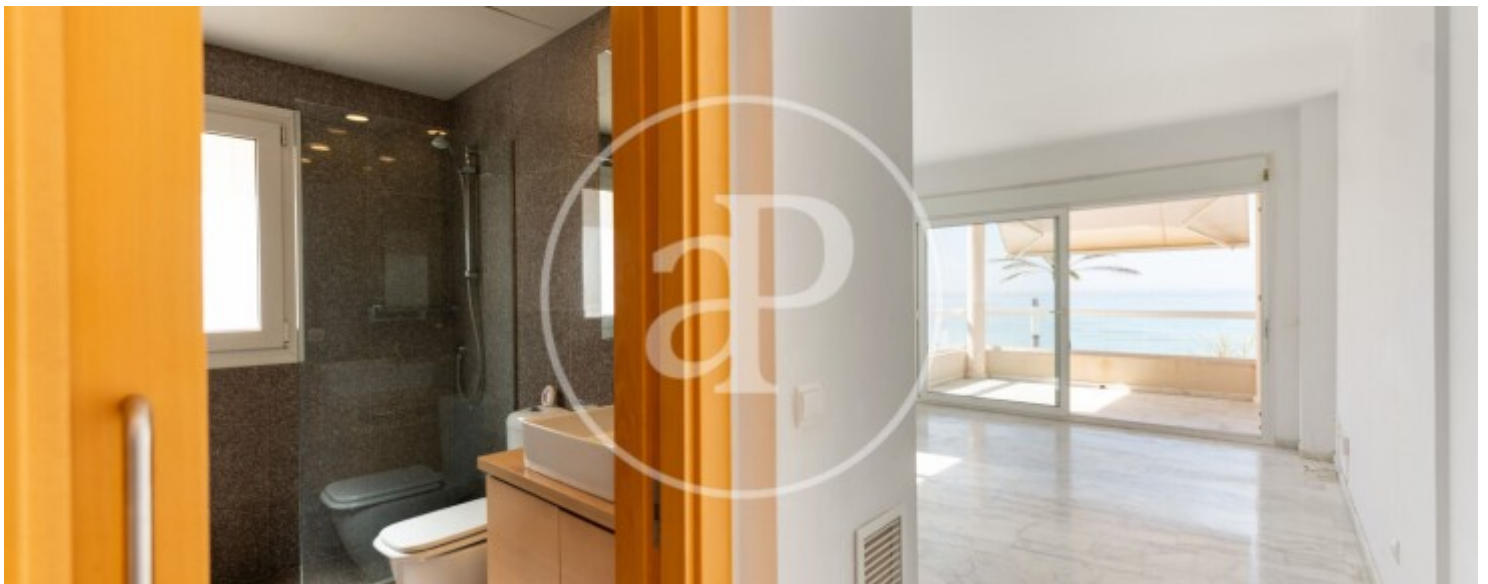
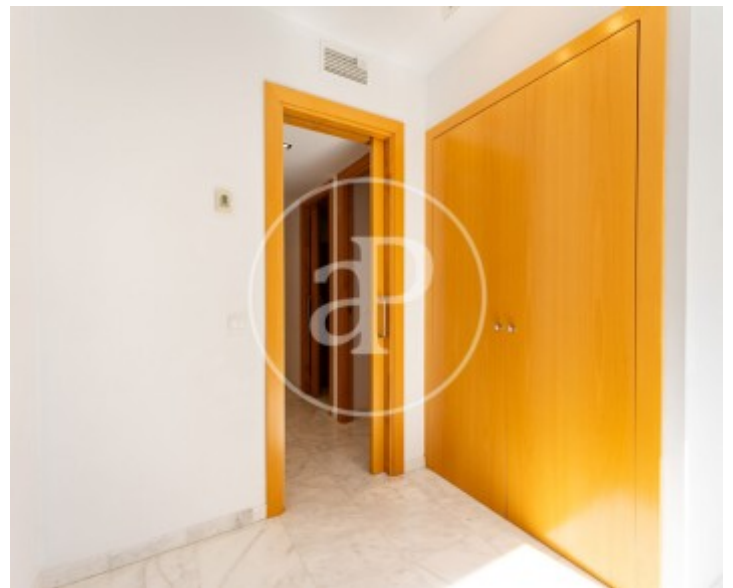
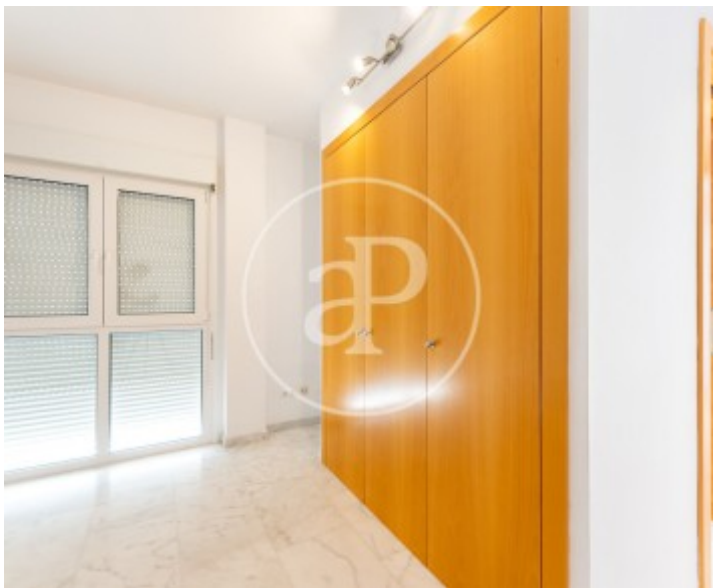
Ciudad Jardín, Palma de Mallorca

REF. APM2604008



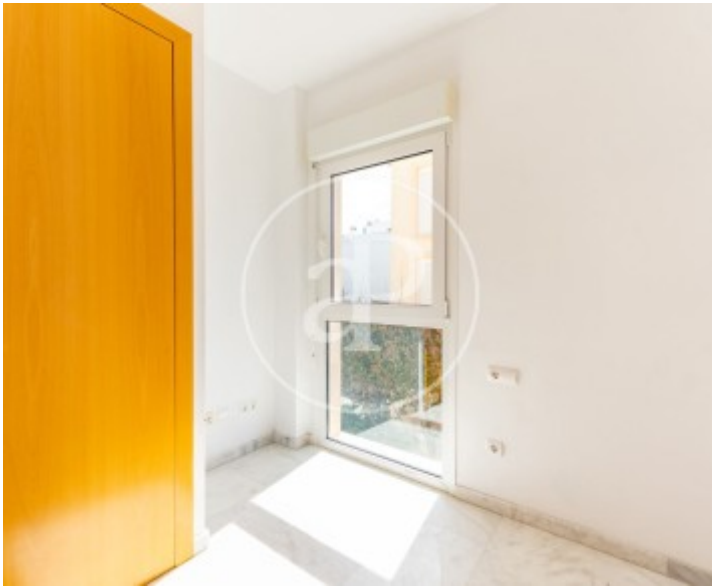
Ciudad Jardín, Palma de Mallorca

REF. APM2604008



Ciudad Jardín, Palma de Mallorca

REF. APM2604008



The information about any property is not binding to any offer or contract. Any verbal or written declaration made by aProperties with regards to the value or condition of the property should not be considered accurate or factual. The pictures make reference to some parts of the property at the times that they were taken. The areas, dimensions and distances that are given are approximate and should be checked by the client. The images are computer generated and are just an approximate indication of the real appearance of the property; these may change at any time. The information with regards to the property may also change at any time.

For **more information** or
to make an appointment

apropertiespalma@aproperties.es
Tel: 871 16 01 60
www.aproperties.es