



Can Pastilla, Palma de Mallorca

REF. ONPM2511006

Penthouse for sale in Can Pastilla

Features

- ✓ Views
- ✓ Heating
- ✓ Furnished
- ✓ AACC
- ✓ Terrace
- ✓ Lift

Surface

89 m²

Bedrooms

2

Bathrooms

2



Price

1,190,000 €

Experience Mediterranean luxury in this unique penthouse within an elegant community of only 7 homes, located in one of the most sought-after areas of Playa de Palma.

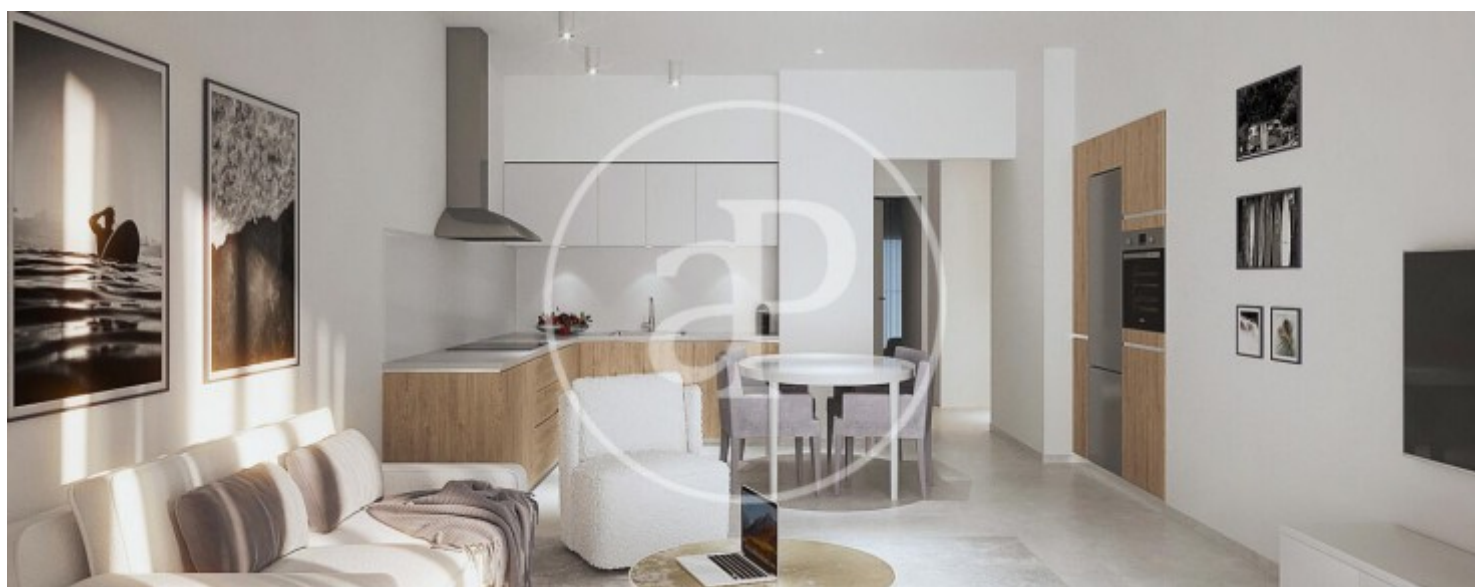
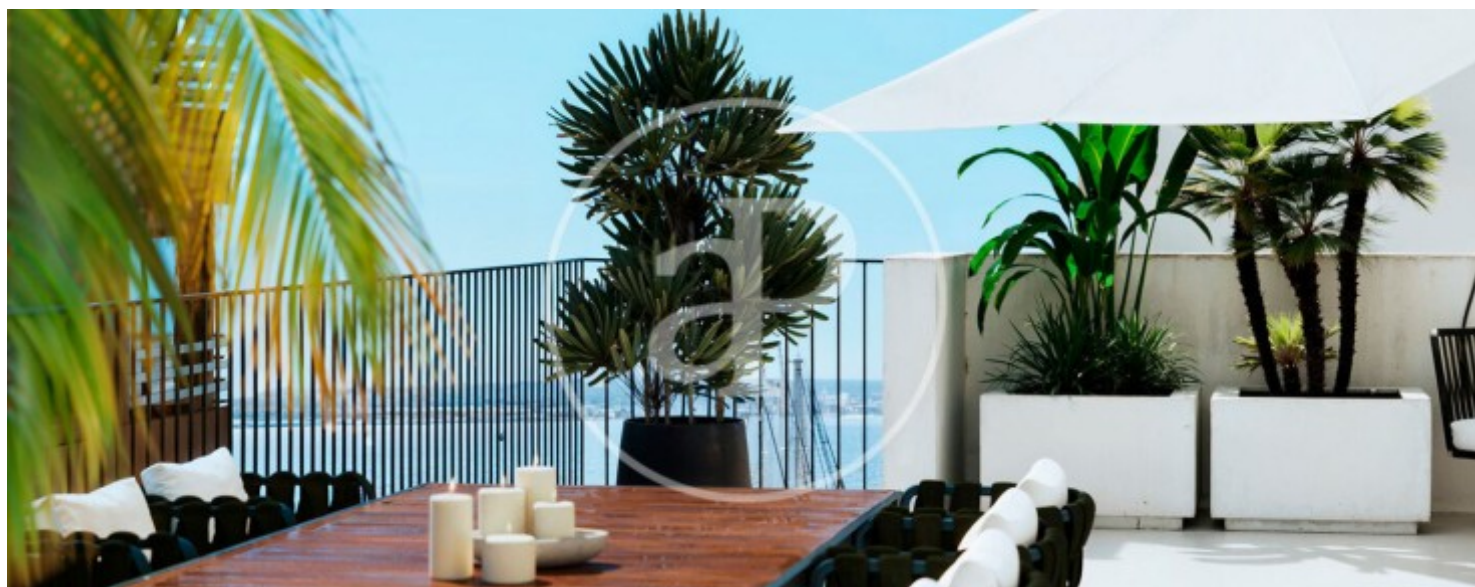
Just steps from the beach, the seafront promenade with exclusive restaurants and the Can Pastilla marina. Penthouse of 89 m² featuring a spectacular 142 m² private terrace with panoramic sea views, ideal for enjoying the sun, outdoor dining and unforgettable moments overlooking the Mediterranean. Main features: 2 spacious bedrooms 2 bathrooms with Italian-style shower Open-plan, fully equipped kitchen 142 m² terrace with sea views Porcelain flooring and LED lighting Home automation

system, underfloor heating, central heating and air conditioning Double-glazed windows and full insulation Modern design, high-quality materials and a construction conceived to offer comfort, elegance and energy efficiency all year round. A true gem by the sea, perfect for those seeking exclusivity, privacy and the authentic Mediterranean lifestyle.

Contact us,
we will be happy to assist you,
to offer you more details and information.

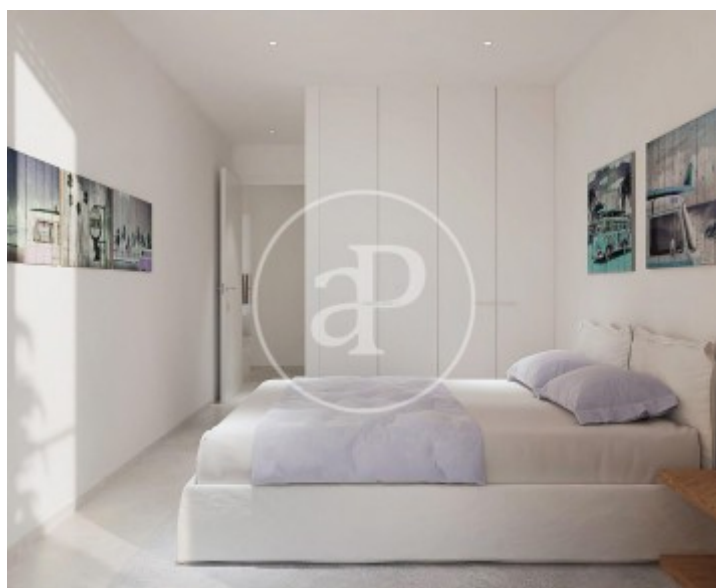
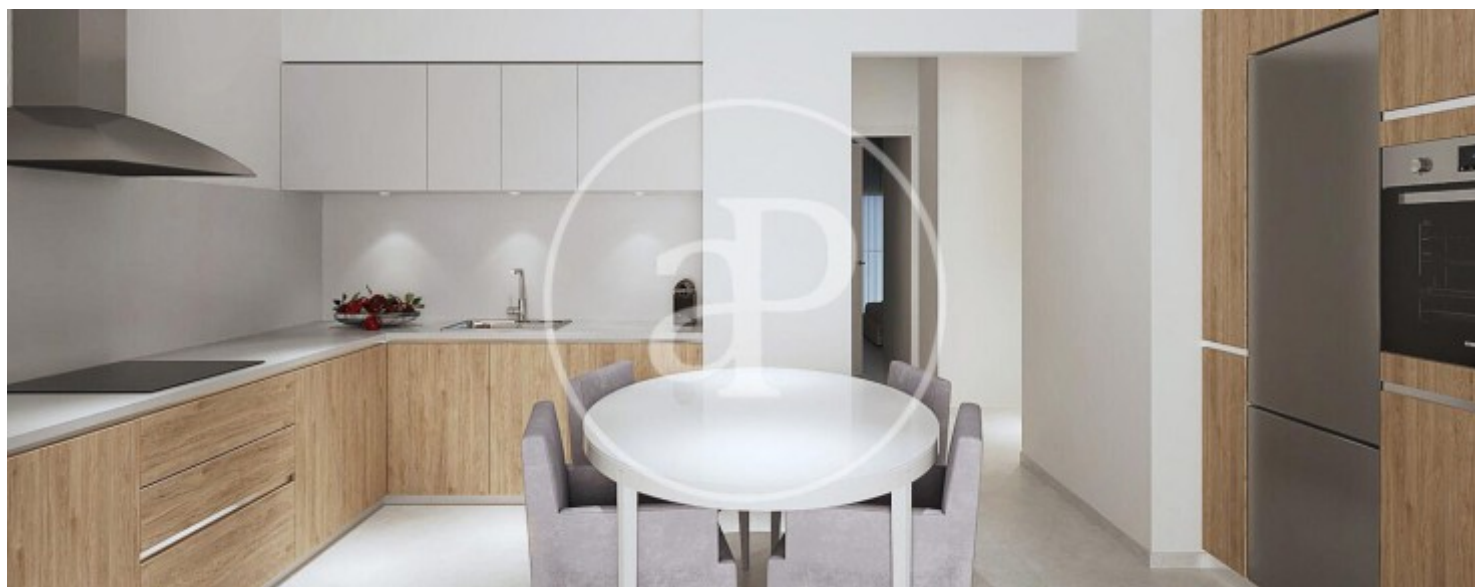
Can Pastilla, Palma de Mallorca

REF. ONPM2511006



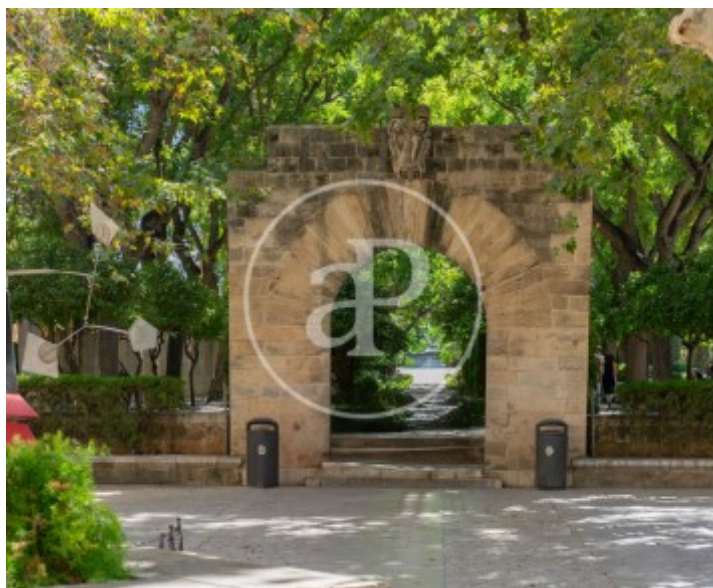
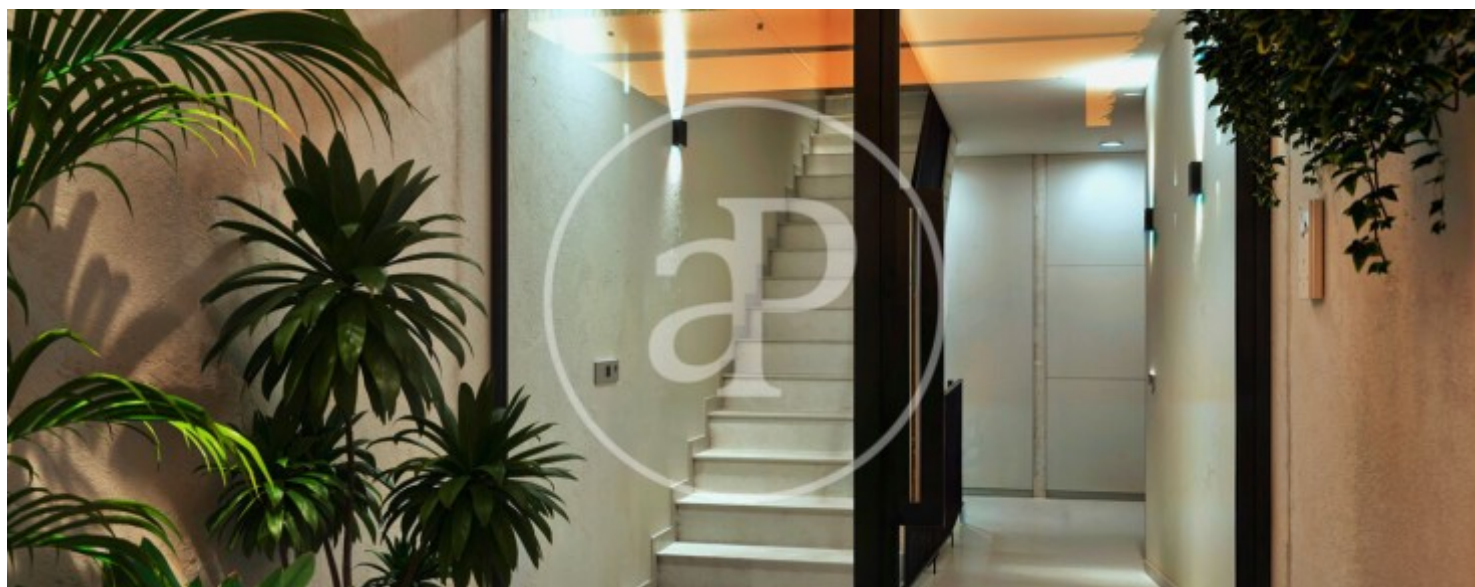
Can Pastilla, Palma de Mallorca

REF. ONPM2511006



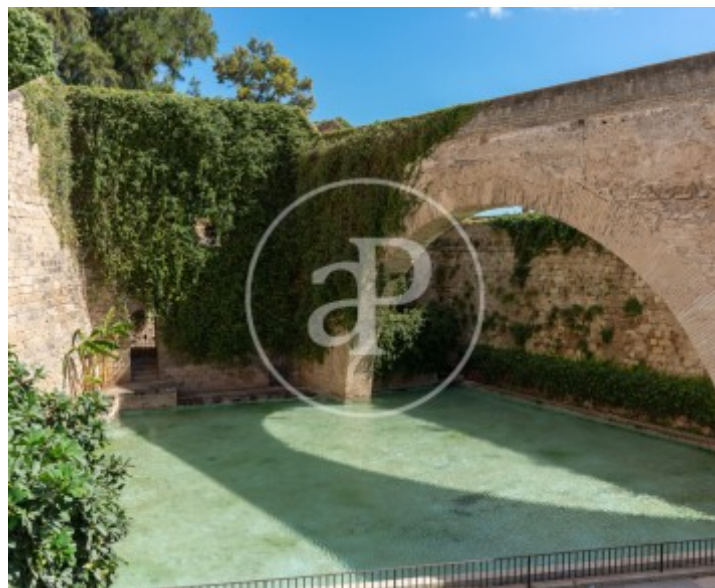
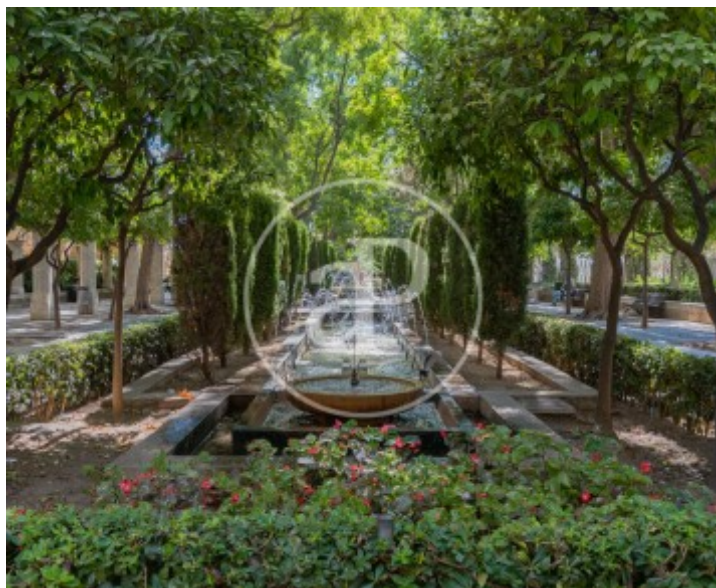
Can Pastilla, Palma de Mallorca

REF. ONPM2511006



Can Pastilla, Palma de Mallorca

REF. ONPM2511006



The information about any property is not binding to any offer or contract. Any verbal or written declaration made by aProperties with regards to the value or condition of the property should not be considered accurate or factual. The pictures make reference to some parts of the property at the times that they were taken. The areas, dimensions and distances that are given are approximate and should be checked by the client. The images are computer generated and are just an approximate indication of the real appearance of the property; these may change at any time. The information with regards to the property may also change at any time.

For **more information** or
to make an appointment

apropertiespalma@aproperties.es
Tel: 871 16 01 60
www.aproperties.es