

Camp d'En Serralta, Palma de Mallorca

REF. APM2606014

Apartment for rent in Palma

Features

- ✓ Heating
- ✓ AACC
- ✓ Lift
- ✓ Furnished
- ✓ Terrace
- ✓ Has parking

Price
4,500 €

Surface

178 m²

Bedrooms

4

Bathrooms

2



Magnificent long-term rental apartment in the very centre of Palma, ideal for those seeking spacious living, comfort and a prime location.

The property offers 178 m² of built area and stands out for its generous spaces, excellent natural light and a layout designed for comfortable everyday living. It features 4 generously sized bedrooms, 2 full bathrooms and numerous built-in wardrobes providing excellent storage capacity. The apartment is rented fully furnished and equipped with everything needed to move in immediately, combining functionality with a warm and elegant style. The living area is spacious and bright, with access to pleasant balconies of

approximately 5 m², allowing you to enjoy the vibrant atmosphere of the city centre. The property also benefits from air conditioning and heating, ensuring maximum comfort throughout the year. The kitchen is fully equipped and includes a practical pantry, perfect for additional storage. There is also a separate laundry room, providing extra convenience and organisation. An exceptional opportunity to enjoy an elegant, spacious and fully equipped home in one of Palma's most sought-after locations, surrounded by shops, restaurants, services and excellent transport connections.

Contact us,
we will be happy to assist you,
to offer you more details and information.

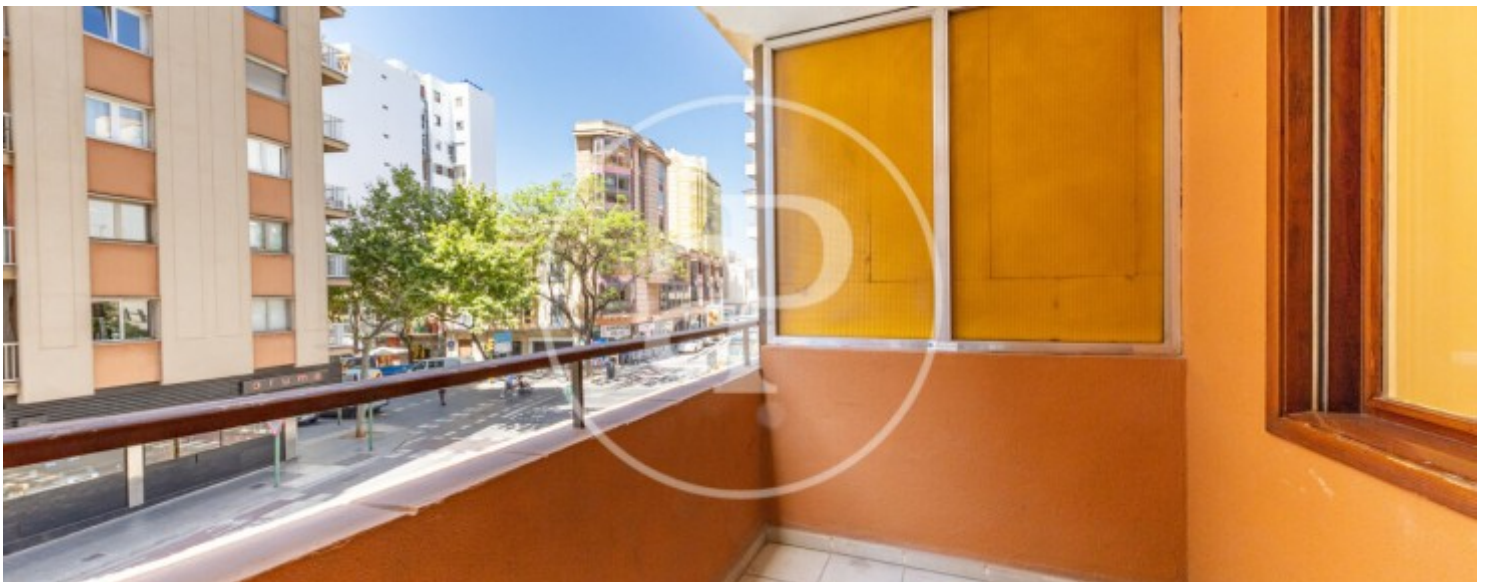
Camp d'En Serralta, Palma de Mallorca

REF. APM2606014



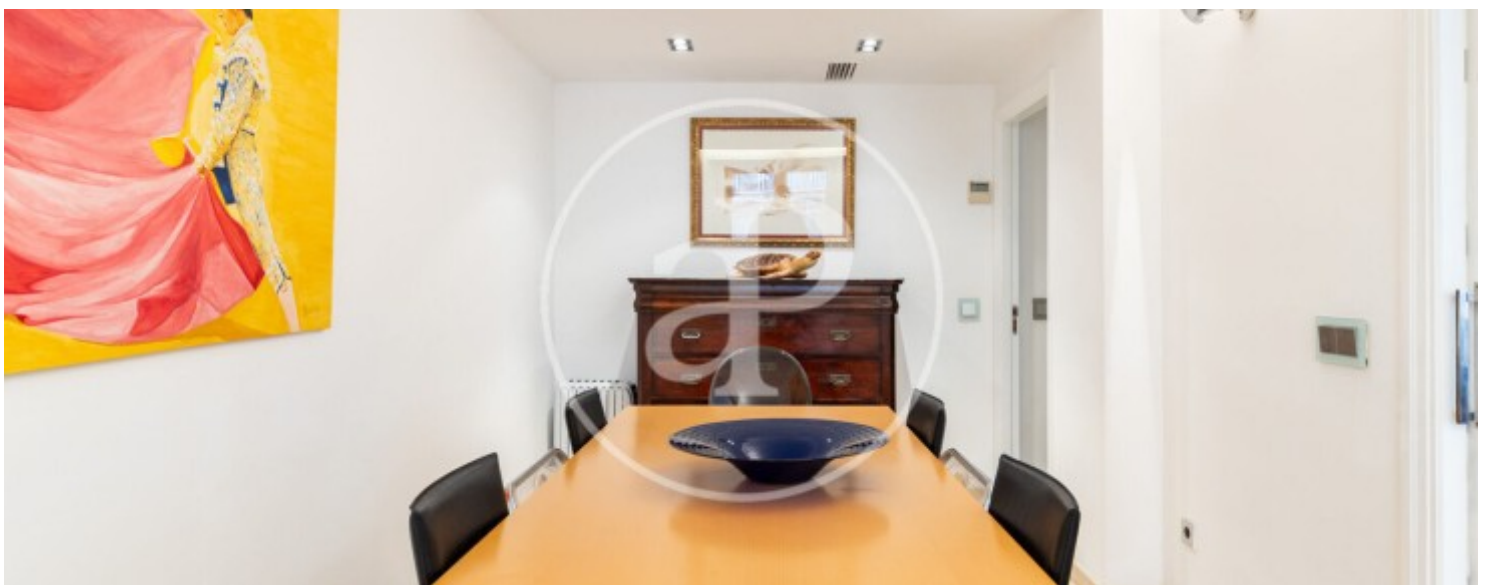
Camp d'En Serralta, Palma de Mallorca

REF. APM2606014



Camp d'En Serralta, Palma de Mallorca

REF. APM2606014



Camp d'En Serralta, Palma de Mallorca

REF. APM2606014



The information about any property is not binding to any offer or contract. Any verbal or written declaration made by aProperties with regards to the value or condition of the property should not be considered accurate or factual. The pictures make reference to some parts of the property at the times that they were taken. The areas, dimensions and distances that are given are approximate and should be checked by the client. The images are computer generated and are just an approximate indication of the real appearance of the property; these may change at any time. The information with regards to the property may also change at any time.

For **more information** or
to make an appointment

apropertiespalma@aproperties.es
Tel: 871 16 01 60
www.aproperties.es