

Camp d'En Serralta, Palma de Mallorca

REF. VPM2604020

Piso a la venta en el centro de Palma

Features

Surface

145 m²

Bedrooms

3

Bathrooms

2

- ✓ Heating
- ✓ AACC
- ✓ Lift
- ✓ Has parking

Price

690,000 €



Exclusive property fully renovated in 2018 with high-quality materials, located in one of Palma's most sought-after areas, just a few steps from Paseo Mallorca.

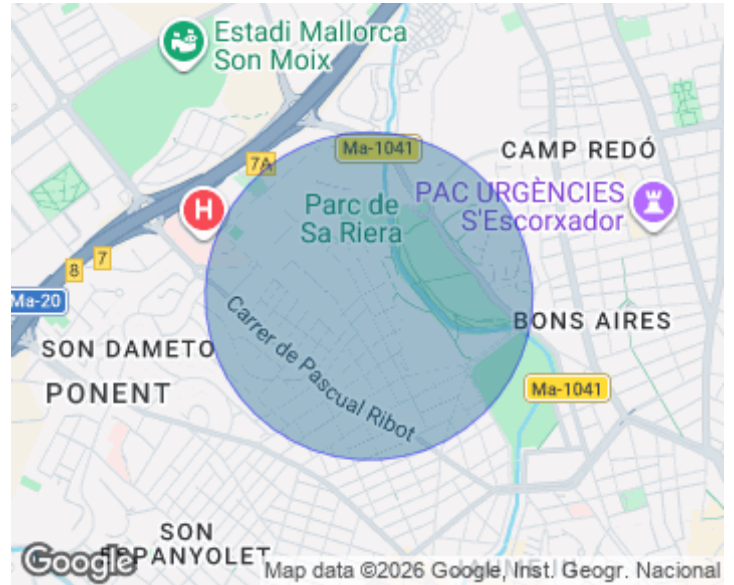
The property stands out for its modern open-plan layout, where the living room, dining area and kitchen are elegantly integrated. The kitchen is equipped with high-end designer appliances. From the day area, there is access to a pleasant 6.5 m² terrace with open views over the city. It currently offers two spacious bedrooms: a double bedroom with en-suite bathroom and a second large room, ideal as a quadruple bedroom, multipurpose room, office or leisure area. There is also the possibility of

restoring its original layout of two double bedrooms, both exterior, with double windows and double built-in wardrobes. The apartment features two full bathrooms, one with a rain shower and the other with a bathtub and double washbasin, as well as a practical pantry and a separate laundry area with washing machine. Among its finishes are large plank parquet flooring resistant to humidity, PVC exterior carpentry with Climalit double glazing and acoustic insulation, as well as a complete climate control system with water radiators for heating and air conditioning in all rooms, ensuring maximum...

Contact us,
we will be happy to assist you,
to offer you more details and information.

Camp d'En Serralta, Palma de Mallorca

REF. VPM2604020



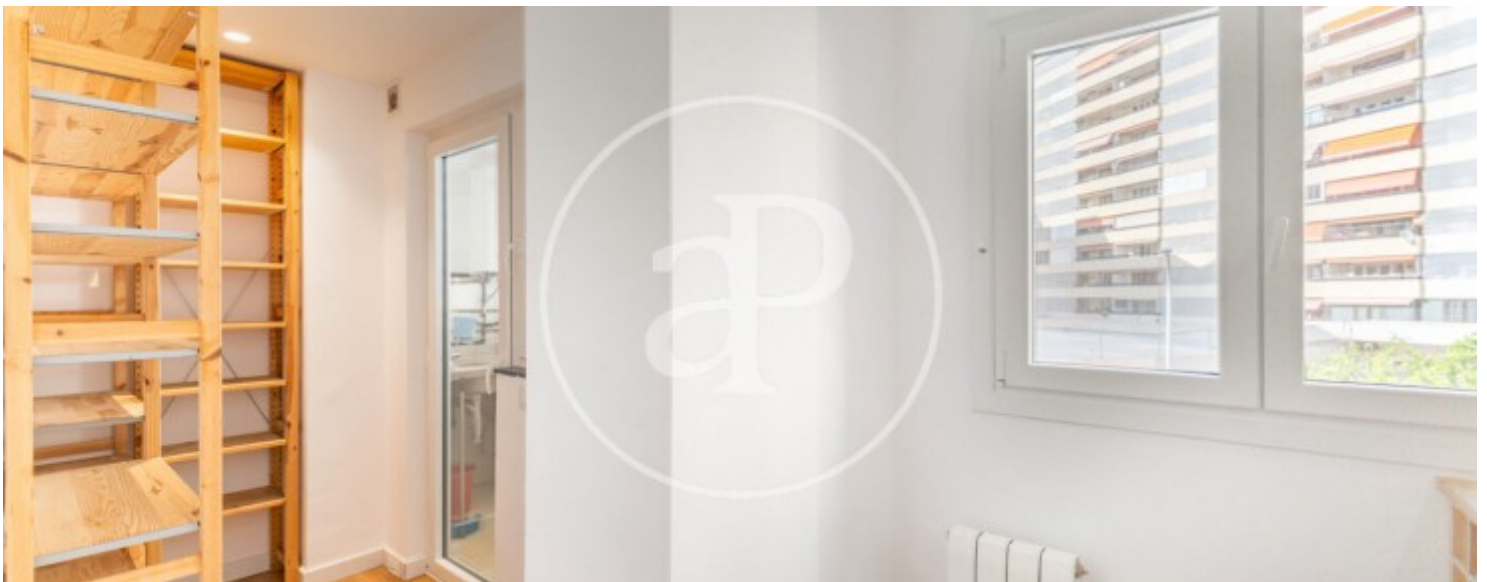
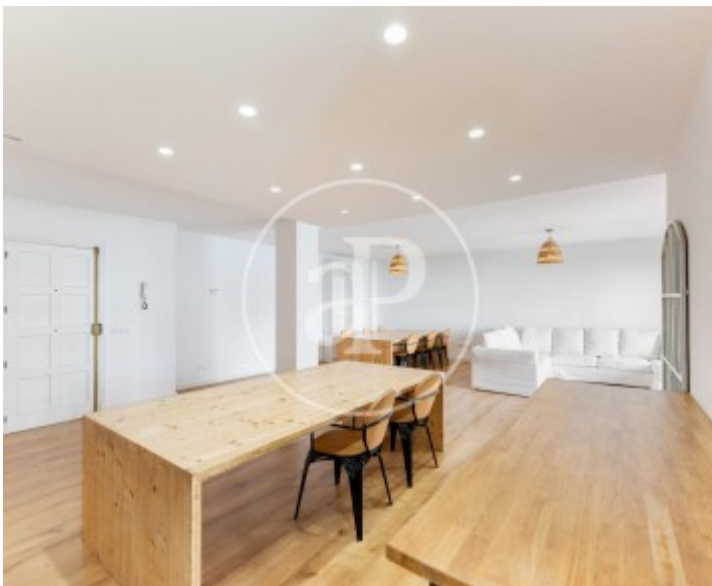
Camp d'En Serralta, Palma de Mallorca

REF. VPM2604020



Camp d'En Serralta, Palma de Mallorca

REF. VPM2604020



Camp d'En Serralta, Palma de Mallorca

REF. VPM2604020



The information about any property is not binding to any offer or contract. Any verbal or written declaration made by aProperties with regards to the value or condition of the property should not be considered accurate or factual. The pictures make reference to some parts of the property at the times that they were taken. The areas, dimensions and distances that are given are approximate and should be checked by the client. The images are computer generated and are just an approximate indication of the real appearance of the property; these may change at any time. The information with regards to the property may also change at any time.

For **more information** or
to make an appointment

apropertiespalma@aproperties.es
Tel: 871 16 01 60
www.aproperties.es