

Palma de Mallorca

REF. APM2208032



Brand new penthouse for rent in El Amanecer

Features

Surface

112 m²

Bedrooms

3

Bathrooms

2

- ✓ Views
- ✓ AACC
- ✓ Pool
- ✓ Lift
- ✓ Furnished
- ✓ Terrace
- ✓ Gym
- ✓ Has parking

Price

1,350 €



In the Amanecer area, we find this penthouse apartment of 100sqm with a private solarium of 100sqm in a recently constructed residential building.

From the entrance door to the property there is direct access to a bright living/dining room with unobstructed views and exit to a balcony with a spiral staircase leading up to a private solarium with unobstructed views of the city. The open plan kitchen is fully fitted and equipped with all the necessary appliances. It has a separate laundry area. In the night area we find three double exterior bedrooms with built-in wardrobes and two complete bathrooms, one with bathtub and the other one with shower in the main bedroom.

The property has parquet floors, air conditioning hot/cold in all rooms, electric blinds and is fully furnished and equipped. It is located in an area where new constructions predominate. It has a lift, communal swimming pool, children's playground, gymnasium and a spacious car park in the same building. It has easy access through the main roads and a good bus communication with the centre of Palma. The expenses of community and ibi are included in the rental price, the rest of the supplies will be paid by the tenant. Don't miss the opportunity to live in a residential complex 10 minutes...

Contact us,
we will be happy to assist you,
to offer you more details and information.

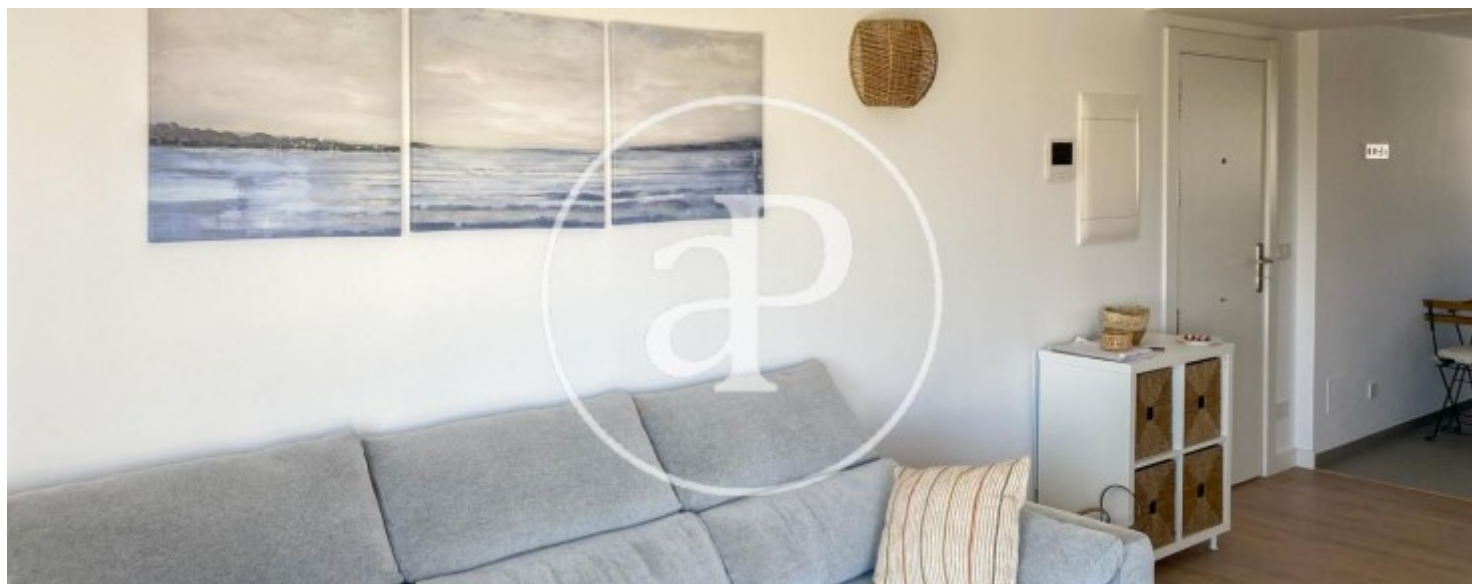
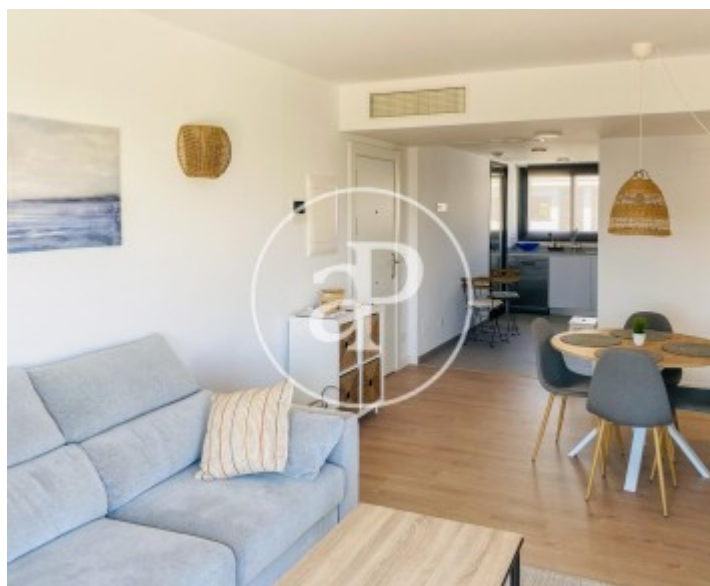
Palma de Mallorca

REF. APM2208032



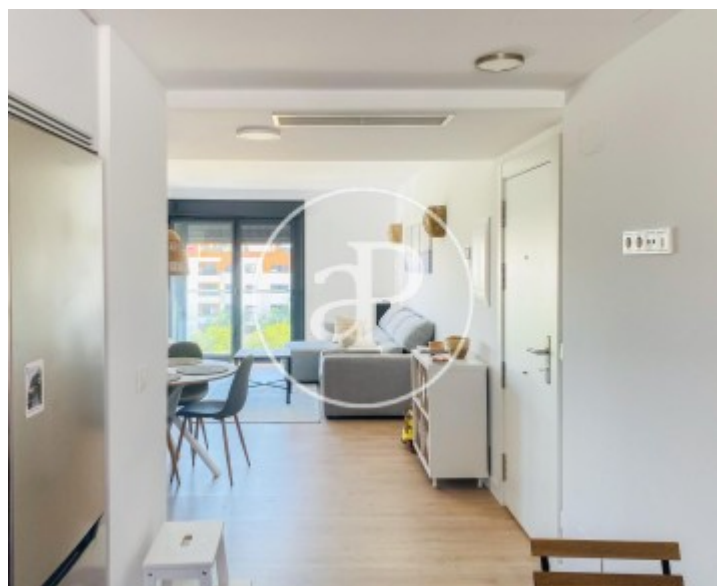
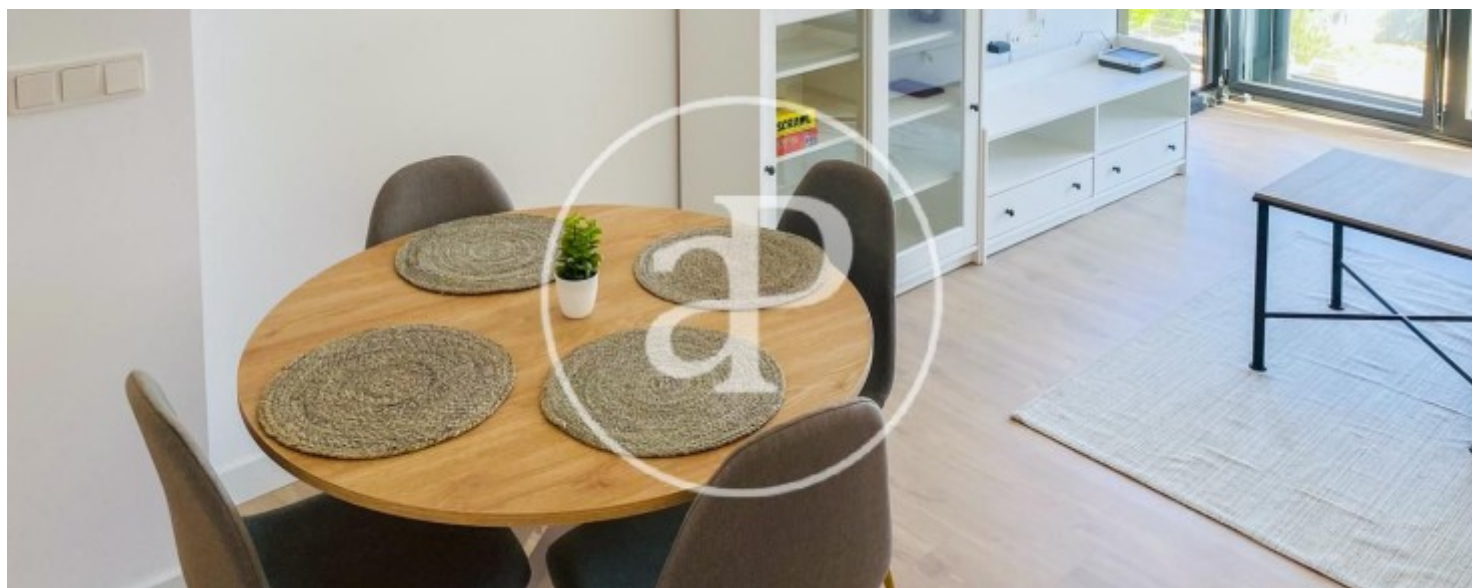
Palma de Mallorca

REF. APM2208032



Palma de Mallorca

REF. APM2208032



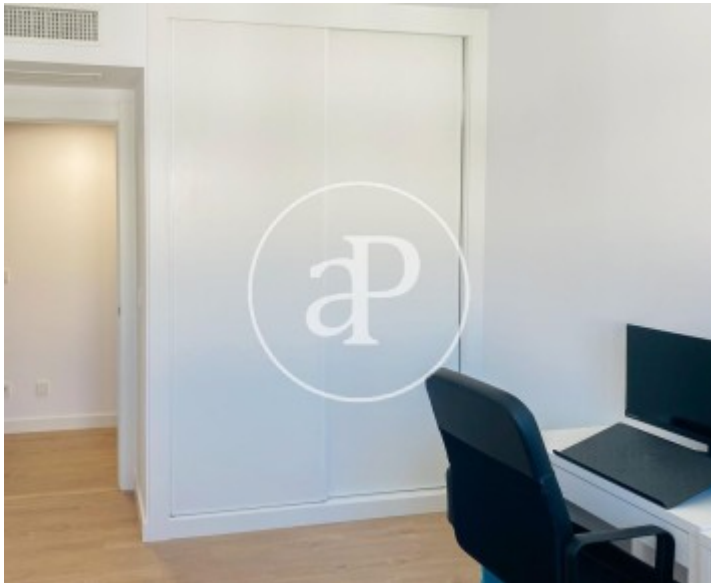


APROPERTIES
REAL ESTATE

Calle Unió 9
07001 Palma
T. 871 16 01 60
www.aproperties.es

Palma de Mallorca

REF. APM2208032



The information about any property is not binding to any offer or contract. Any verbal or written declaration made by aProperties with regards to the value or condition of the property should not be considered accurate or factual. The pictures make reference to some parts of the property at the times that they were taken. The areas, dimensions and distances that are given are approximate and should be checked by the client. The images are computer generated and are just an approximate indication of the real appearance of the property; these may change at any time. The information with regards to the property may also change at any time.



For **more information** or
to make an appointment

apropertiespalma@aproperties.es
Tel: 871 16 01 60
www.aproperties.es