

Born, Palma de Mallorca

REF. VPM2401007



Apartment for sale with balconies in the heart of Palma

Features

- ✓ Views
- ✓ AACC
- ✓ Terrace
- ✓ Lift

Price

800,000 €

Surface

160 m²

Bedrooms

6

Bathrooms

2



Office for sale, a unique opportunity in the heart of Palma, located on the top floor of a building with two lifts, which guarantees easy access and comfort.

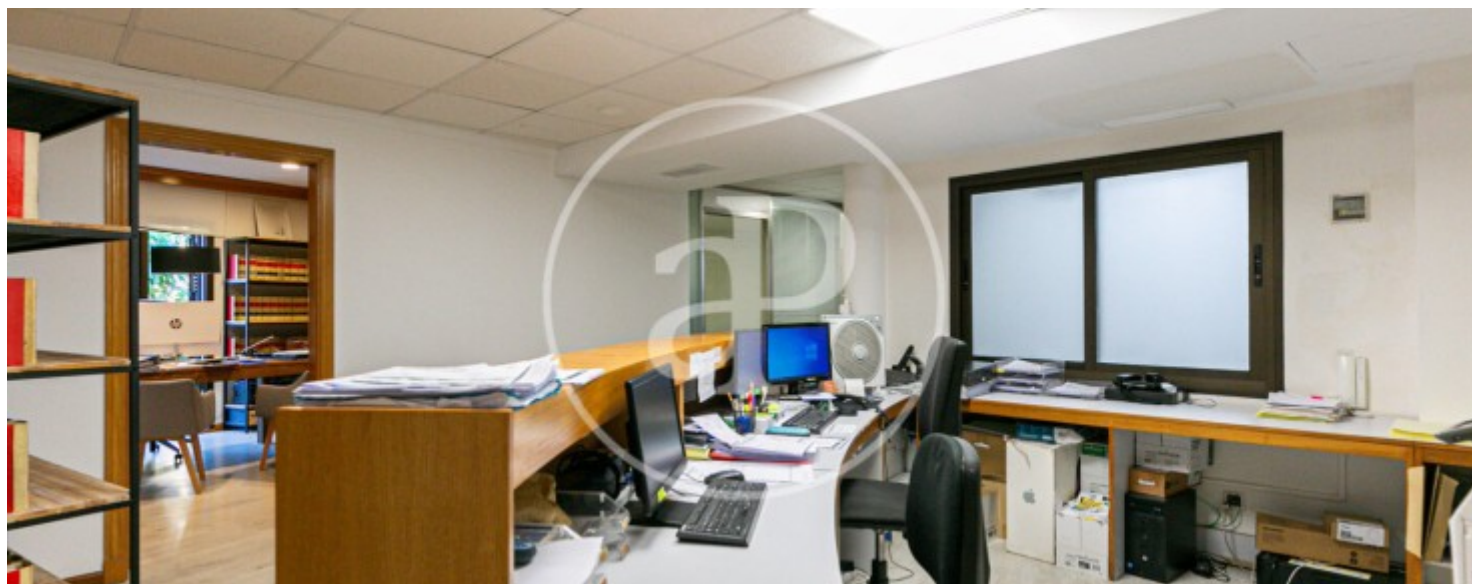
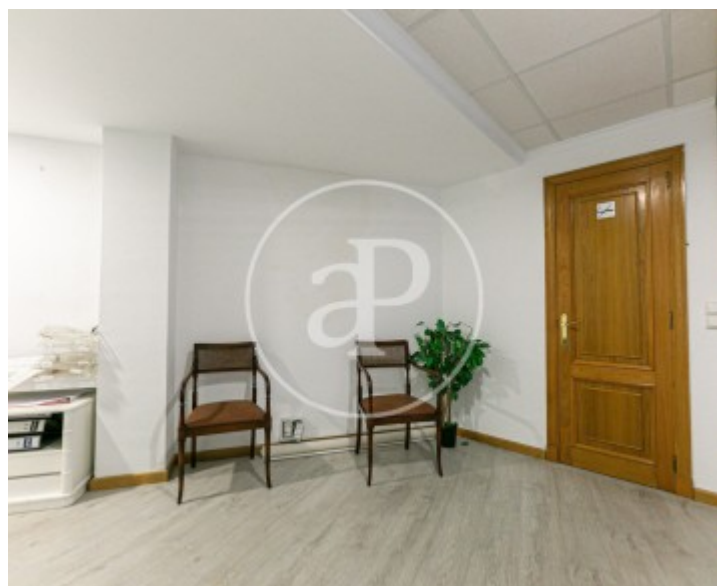
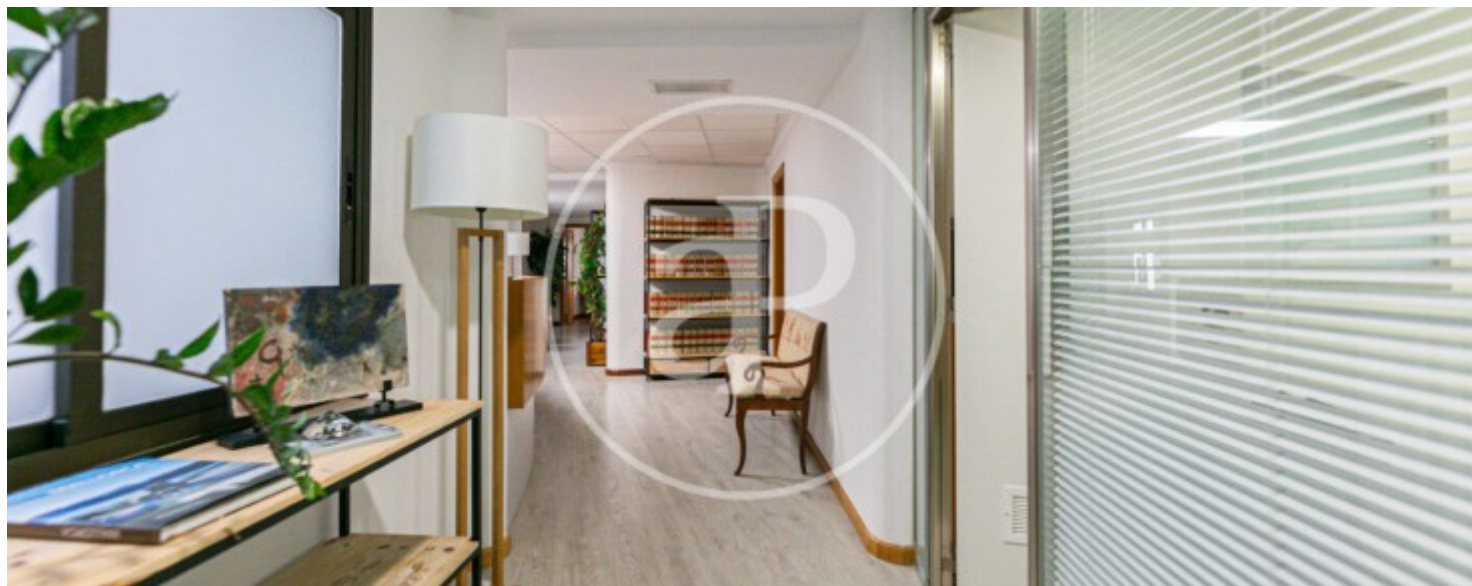
Its main attraction is the licence for change of use to residential use, which offers the possibility of converting it into a spacious and bright home. With five balconies overlooking the charming Plaza del Rosario, this space offers remarkable luminosity and panoramic views of the residential area in the centre of Palma. Tranquillity is a prominent feature, providing a serene and peaceful environment, despite being surrounded by the vibrant activity of the city. Its privileged location in a premium residential

area guarantees proximity to the best luxury shops, diverse retail outlets and a wide range of gastronomic and entertainment options. You will be able to enjoy pleasant strolls without the need to use your car, thanks to the accessibility on foot to all that this area has to offer. This property offers a versatile space of 160sqm that is perfectly suited to be transformed into a unique residence, with all the comforts and charm of living in one of the most exclusive and lively areas of Palma. Can you imagine living here?

Contact us,
we will be happy to assist you,
to offer you more details and information.

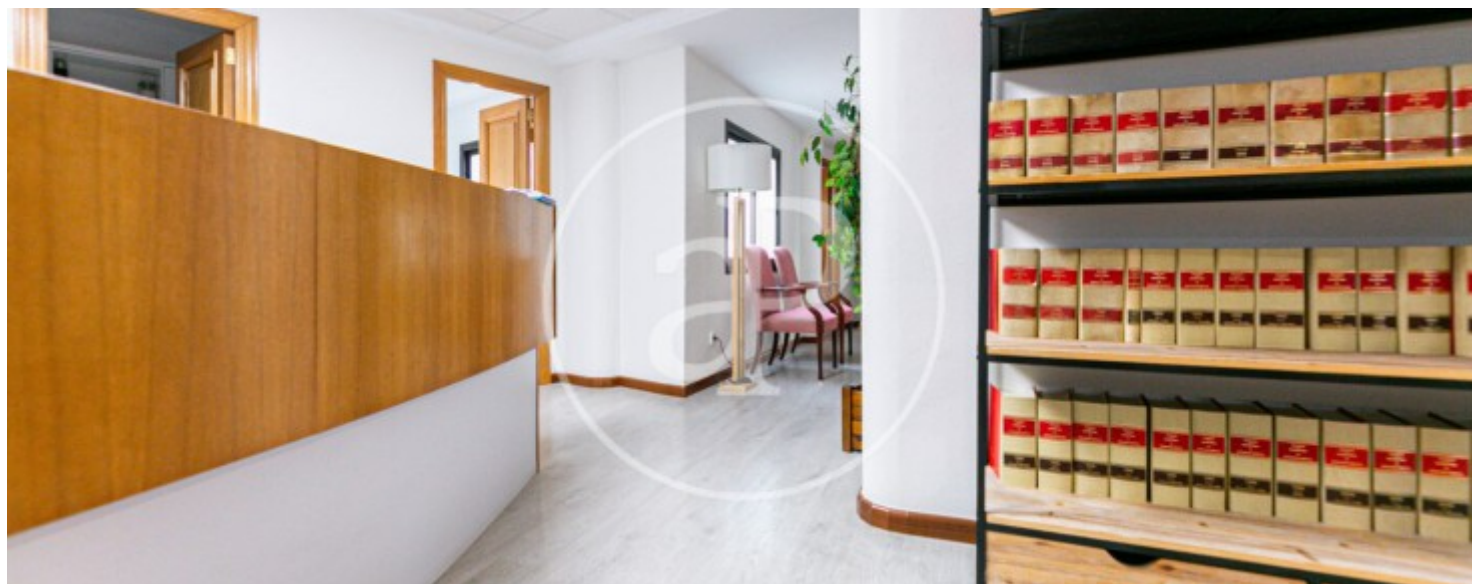
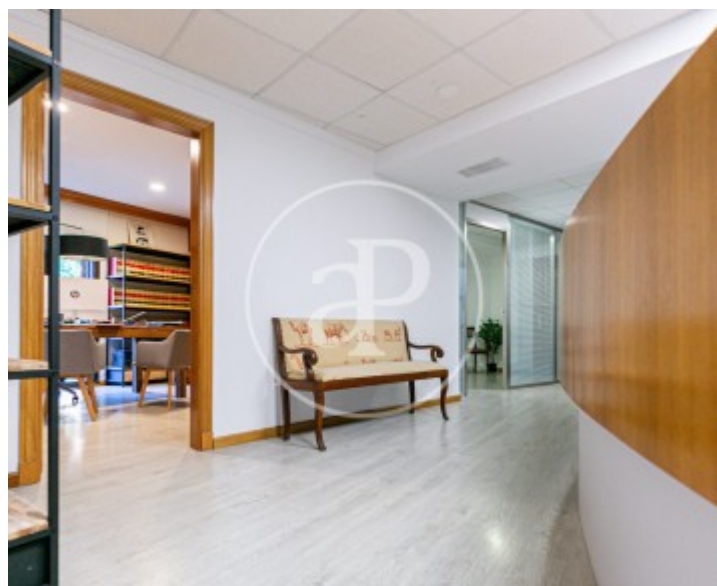
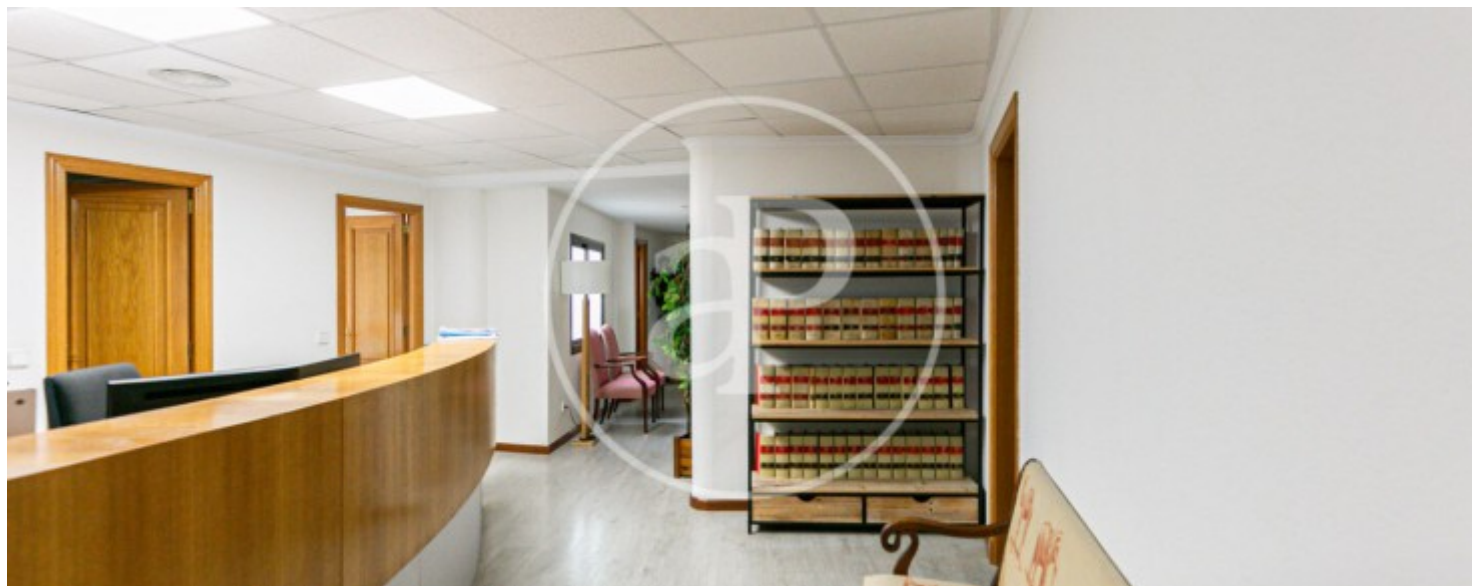
Born, Palma de Mallorca

REF. VPM2401007



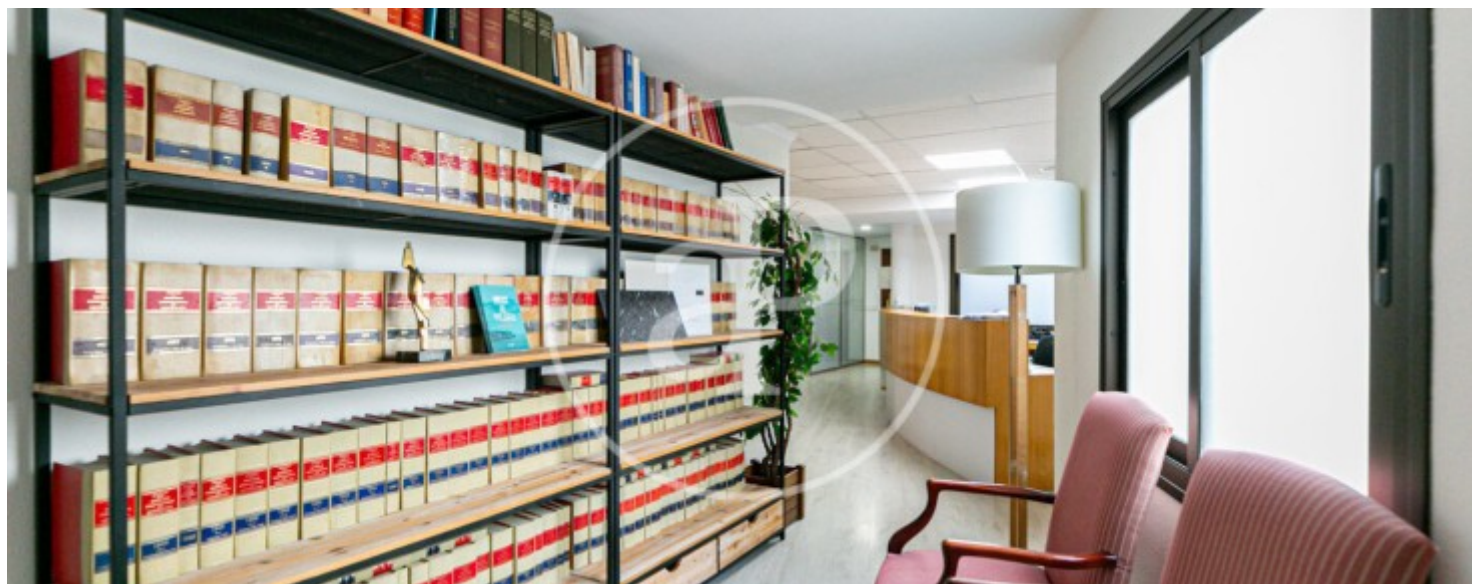
Born, Palma de Mallorca

REF. VPM2401007



Born, Palma de Mallorca

REF. VPM2401007





APROPERTIES
REAL ESTATE

Calle Unió 9
07001 Palma
T. 871 16 01 60
www.aproperties.es

Born, Palma de Mallorca

REF. VPM2401007



The information about any property is not binding to any offer or contract. Any verbal or written declaration made by aProperties with regards to the value or condition of the property should not be considered accurate or factual. The pictures make reference to some parts of the property at the times that they were taken. The areas, dimensions and distances that are given are approximate and should be checked by the client. The images are computer generated and are just an approximate indication of the real appearance of the property; these may change at any time. The information with regards to the property may also change at any time.



For **more information** or
to make an appointment

apropertiespalma@aproperties.es
Tel: 871 16 01 60
www.aproperties.es