

Born, Palma de Mallorca

REF. VPM2407012

Apartment for sale in Paseo del Borne

Features

Surface

160 m²

Bedrooms

2

Bathrooms

3

- ✓ Views
- ✓ Terrace
- ✓ Lift

Price

2,000,000 €



Located on the prestigious Paseo del Born, known as "The Golden Mile," this elegant duplex offers the perfect combination of history, exclusivity, and comfort.

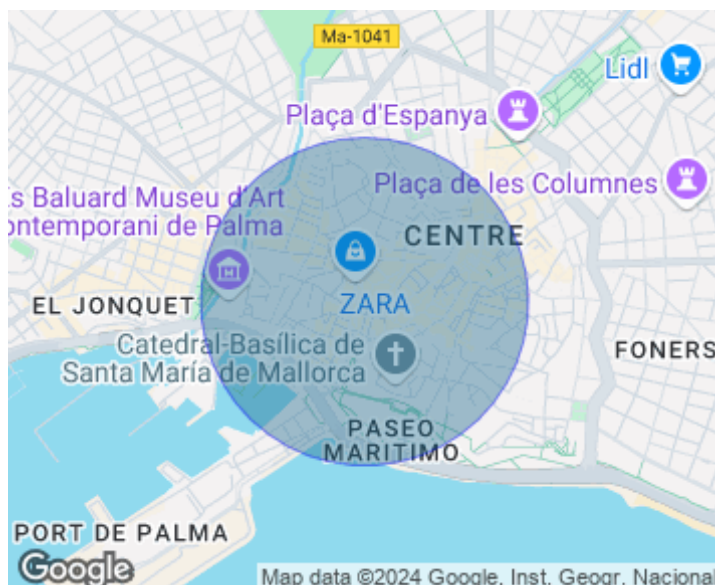
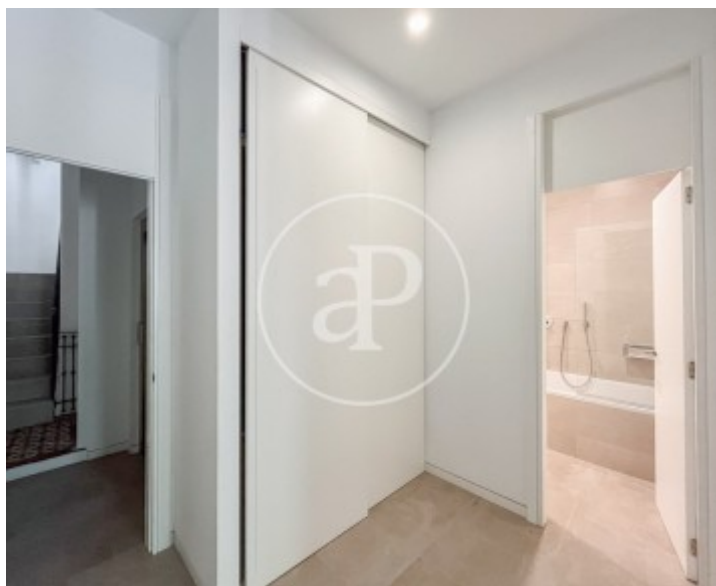
Its unbeatable location provides excellent public transport connections and a unique setting, surrounded by the city's most iconic landmarks, such as the Cathedral, Almudaina, and the seafront promenade. Additionally, you will enjoy a wide variety of dining and leisure options, thanks to the exclusive shops and restaurants in Palma's historic center. Situated in an emblematic 1925 building, completely renovated in 2018, this beautiful 160 m² duplex is spread over two floors and features

two private terraces. The fourth floor houses the sleeping area, with two spacious bedrooms, each with a walk-in closet and an en-suite bathroom, ensuring maximum comfort and privacy. The upper floor boasts a bright living-dining room with access to a 15 m² terrace offering spectacular views of the vibrant Paseo del Born. It also includes a guest toilet and a semi-open kitchen with access to another peaceful 15 m² terrace, perfect for enjoying the tranquility and pleasant climate. Notable features include large windows, wooden beams, built-in wardrobes, and a high-quality...

Contact us,
we will be happy to assist you,
to offer you more details and information.

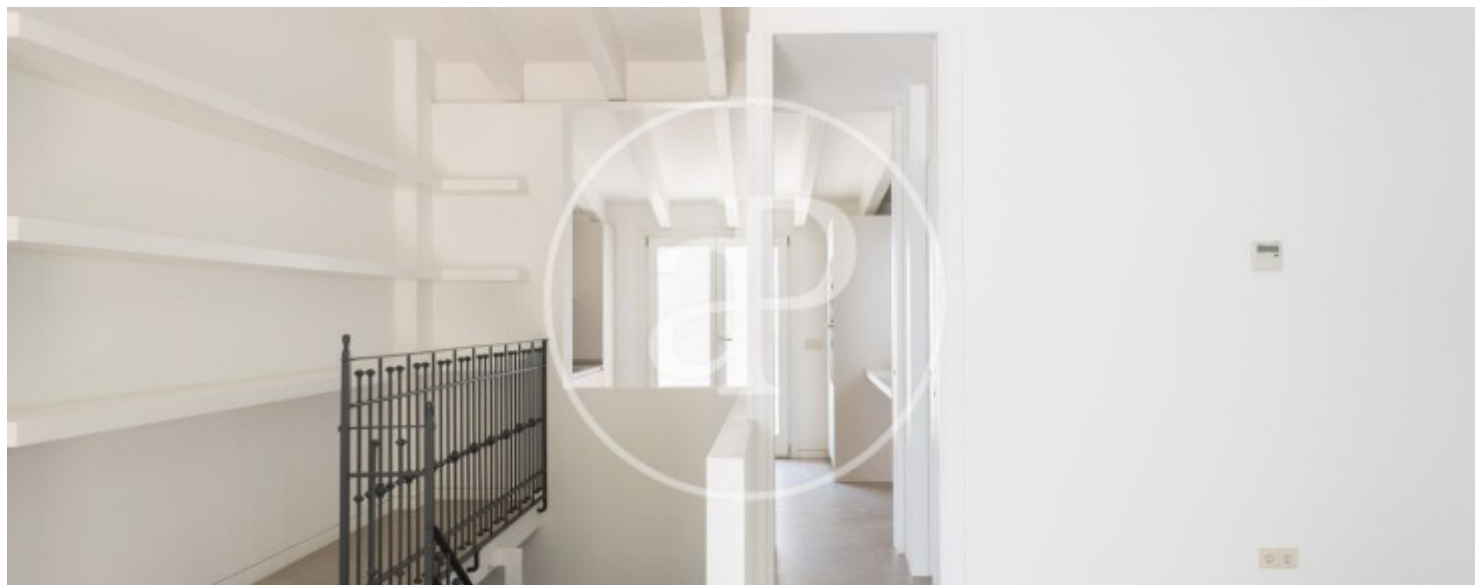
Born, Palma de Mallorca

REF. VPM2407012



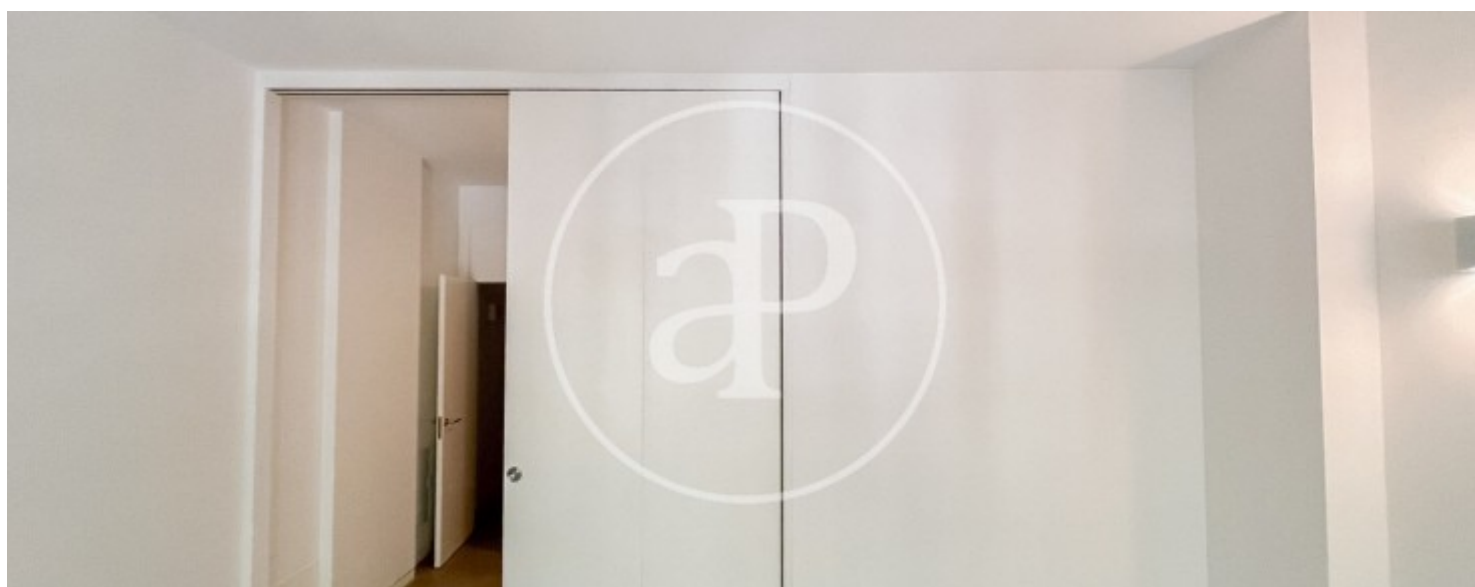
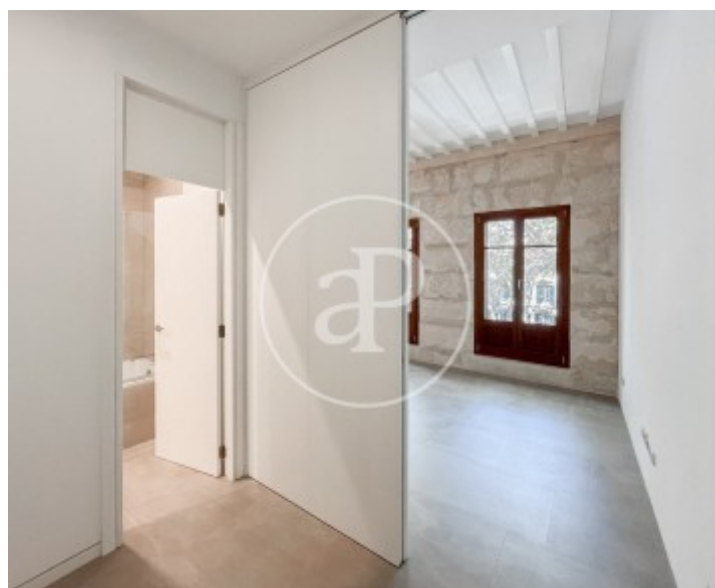
Born, Palma de Mallorca

REF. VPM2407012



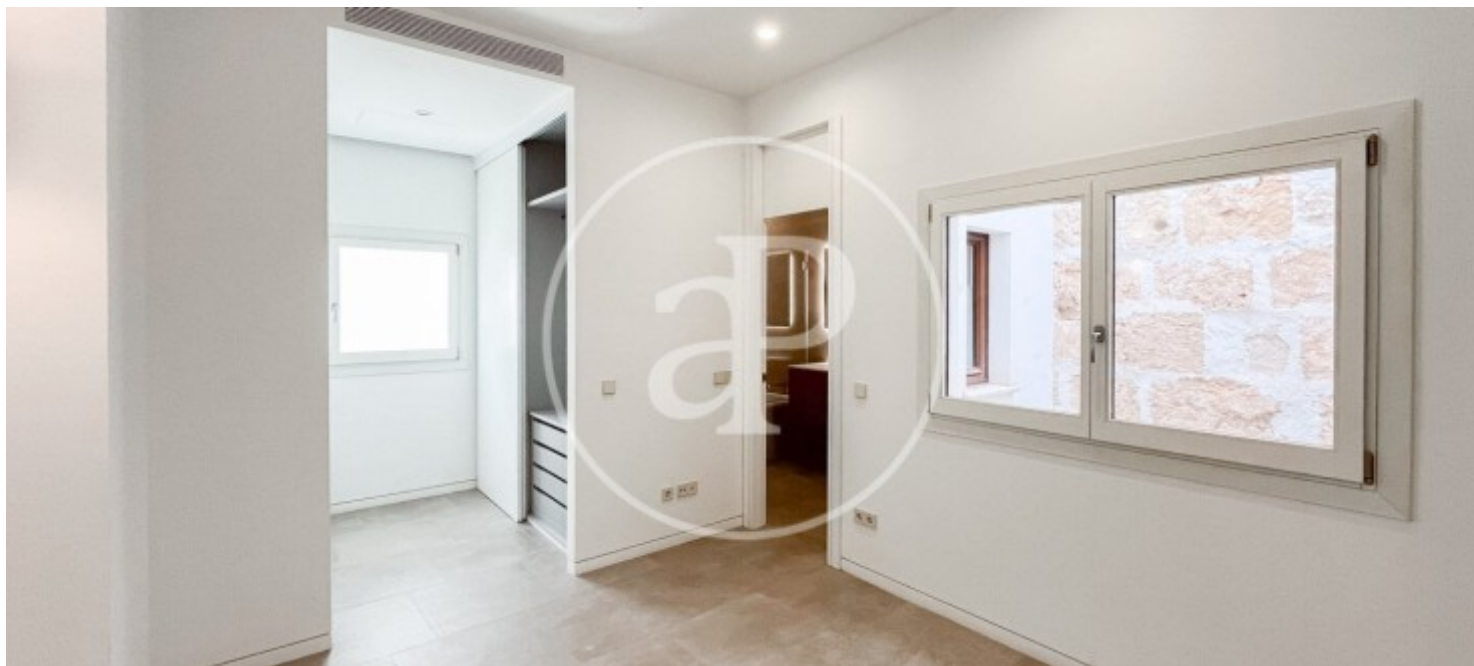
Born, Palma de Mallorca

REF. VPM2407012



Born, Palma de Mallorca

REF. VPM2407012



The information about any property is not binding to any offer or contract. Any verbal or written declaration made by aProperties with regards to the value or condition of the property should not be considered accurate or factual. The pictures make reference to some parts of the property at the times that they were taken. The areas, dimensions and distances that are given are approximate and should be checked by the client. The images are computer generated and are just an approximate indication of the real appearance of the property; these may change at any time. The information with regards to the property may also change at any time.

For **more information** or
to make an appointment

apropertiespalma@aproperties.es
Tel: 871 16 01 60
www.aproperties.es