



Bons Aires, Palma de Mallorca

REF. APM2508001

Apartment for rent in Bons Aires area

Features

- ✓ AACC
- ✓ Lift
- ✓ Has parking

Price

1,850 €

Surface

116 m²

Bedrooms

3

Bathrooms

2



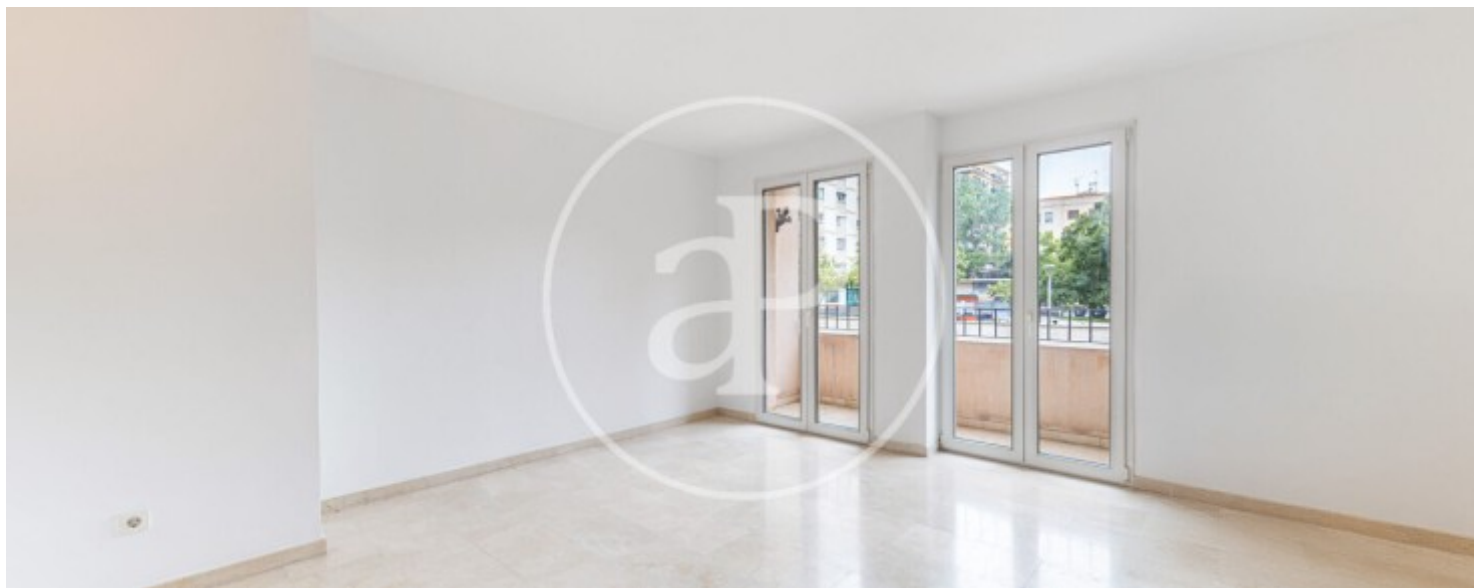
Spacious 116?sqm Unfurnished Apartment in a Quiet, Well-Connected Area – Ideal for Families This bright 116?sqm apartment stands out for its generous space, functional layout, and excellent location. Perfect for families or those seeking a comfortable, well-connected home. The property features three bedrooms: a master bedroom with en-suite bathroom and access to a private balcony, plus two single bedrooms. All rooms have built-in wardrobes and independent air conditioning, as well as an additional closet in the hallway. The spacious and bright living-dining room opens onto a second exterior balcony – ideal for enjoying natural light. The separate kitchen connects to a large utility room, perfect for laundry and storage. There are two full bathrooms, both equipped with a bathtub and bid

et. Climalit windows provide excellent thermal and acoustic insulation, ensuring year-round comfort. A parking space in the same building is included, offering added convenience and security. Located in a quiet residential area, close to all amenities, with excellent public transport connections, just steps from a family-friendly park and the well-known Lluís Vives school – a perfect home for families seeking comfort and quality.

Contact us,
we will be happy to assist you,
to offer you more details and information.

Bons Aires, Palma de Mallorca

REF. APM2508001



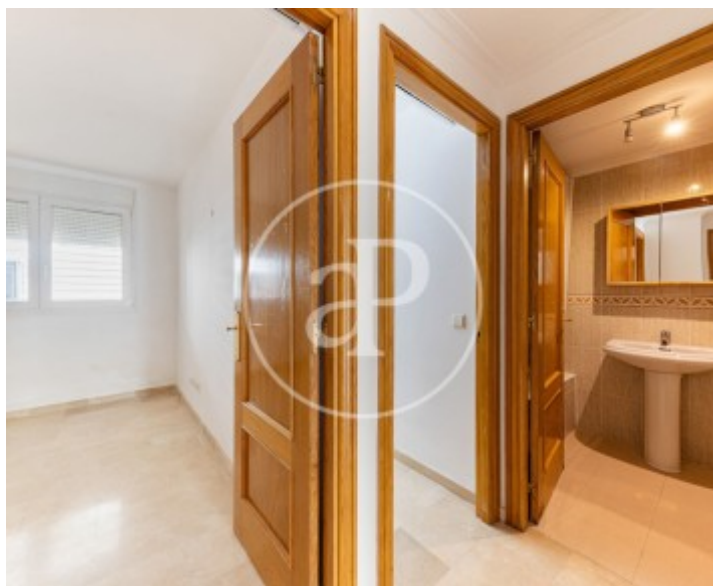
Bons Aires, Palma de Mallorca

REF. APM2508001



Bons Aires, Palma de Mallorca

REF. APM2508001



Bons Aires, Palma de Mallorca

REF. APM2508001



The information about any property is not binding to any offer or contract. Any verbal or written declaration made by aProperties with regards to the value or condition of the property should not be considered accurate or factual. The pictures make reference to some parts of the property at the times that they were taken. The areas, dimensions and distances that are given are approximate and should be checked by the client. The images are computer generated and are just an approximate indication of the real appearance of the property; these may change at any time. The information with regards to the property may also change at any time.

For **more information** or
to make an appointment

apropertiespalma@aproperties.es
Tel: 871 16 01 60
www.aproperties.es