

Arxiduc Lluís Salvador , Palma de Mallorca

REF. VPM2401015



## Apartment for sale in the centre of Palma

### Features

Surface

**110 m<sup>2</sup>**

Bedrooms

**4**

Bathroom

**1**

✓ Boxroom ✓ AACC

✓ Terrace ✓ Lift

Price

**420,000 €**



**Exclusive City Centre Flat: Unique Opportunity**  
**Welcome to this exceptional property situated in the sought after area of 31 de Diciembre, an emblematic location in the heart of the city.**

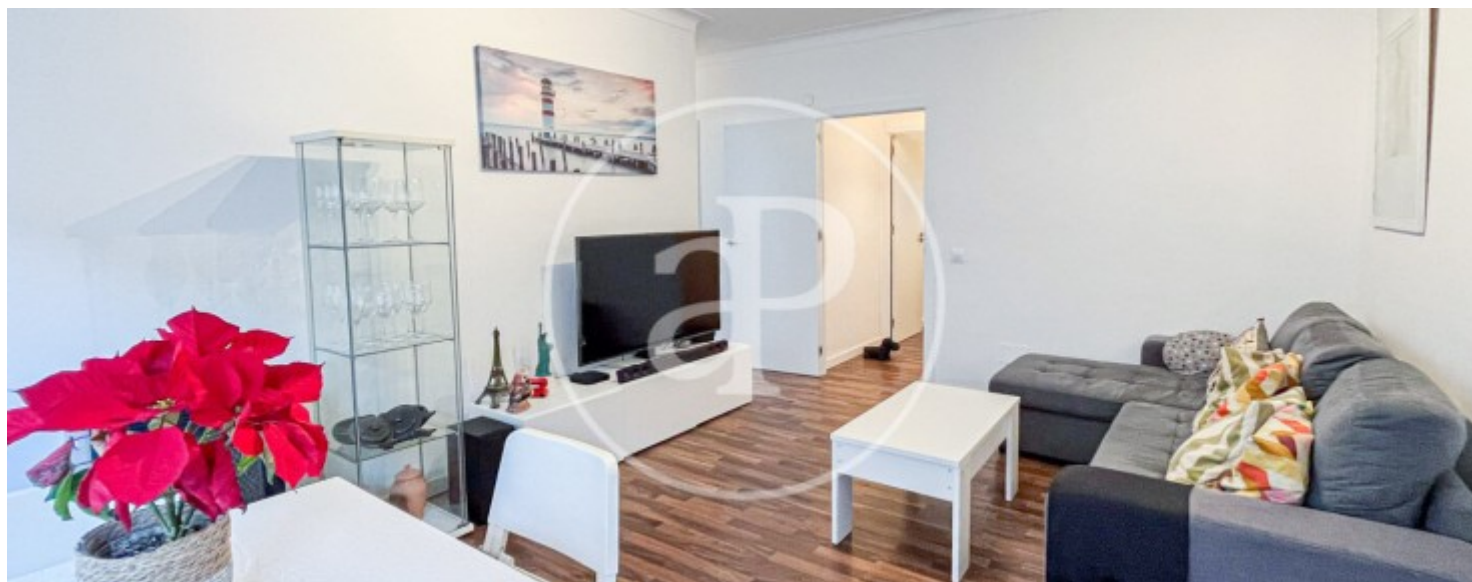
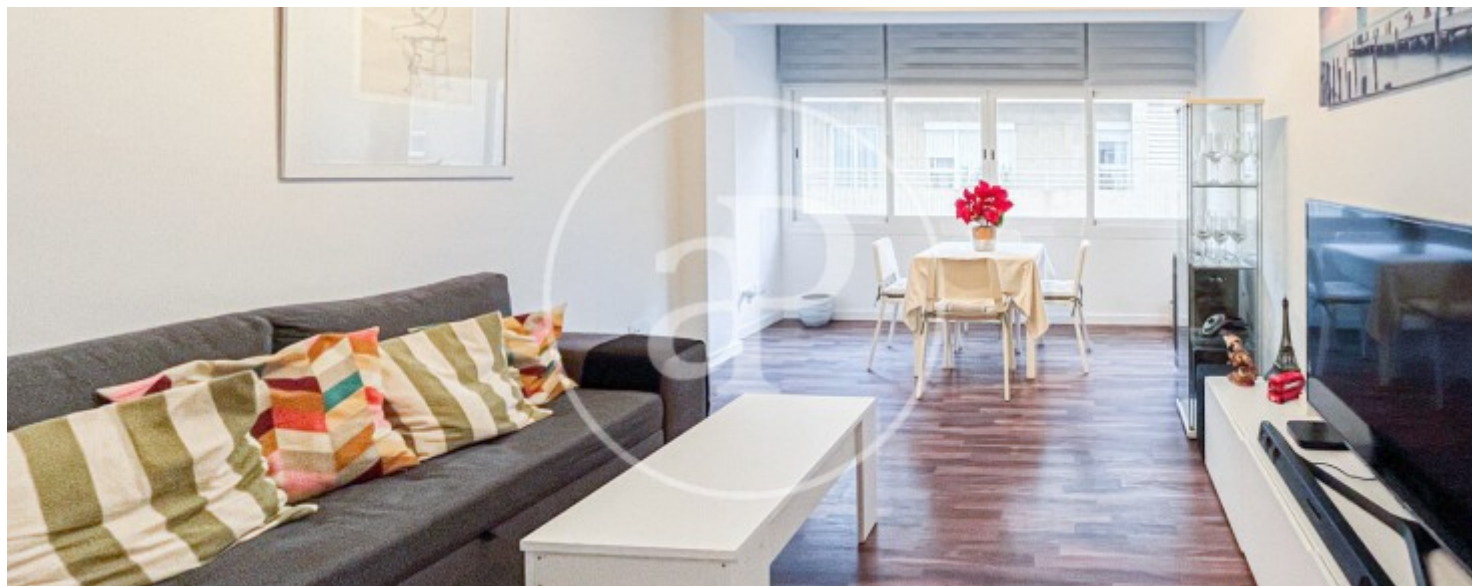
This approximately 110sqm apartment has been meticulously refurbished to offer a modern and functional environment, ideal for those looking to combine comfort with the convenience of a privileged location. Features Highlights: Spacious Terrace: Enjoy your outdoor moments on the 20sqm private terrace, a perfect space to relax, socialise or simply enjoy the sunshine and urban views. Impeccable Interior Design: The apartment features a spacious living-dining room, fully fitted

kitchen with breakfast area, and four double bedrooms that offer versatility to suit your needs. Quality finishes: The parquet and tiled floors provide warmth and elegance, while the white lacquered interior carpentry and double glazed windows (double glazing) ensure a comfortable and bright atmosphere. Quality finishes: The parquet and stoneware floors add warmth and elegance, while the white lacquered interior carpentry and double-glazed windows (double glazing) ensure a comfortable and bright atmosphere. Strategic Location: The property is located just minutes away from iconic locations...

**Contact us,**  
we will be happy to assist you,  
to offer you more details and information.

Arxiduc Lluís Salvador , Palma de Mallorca

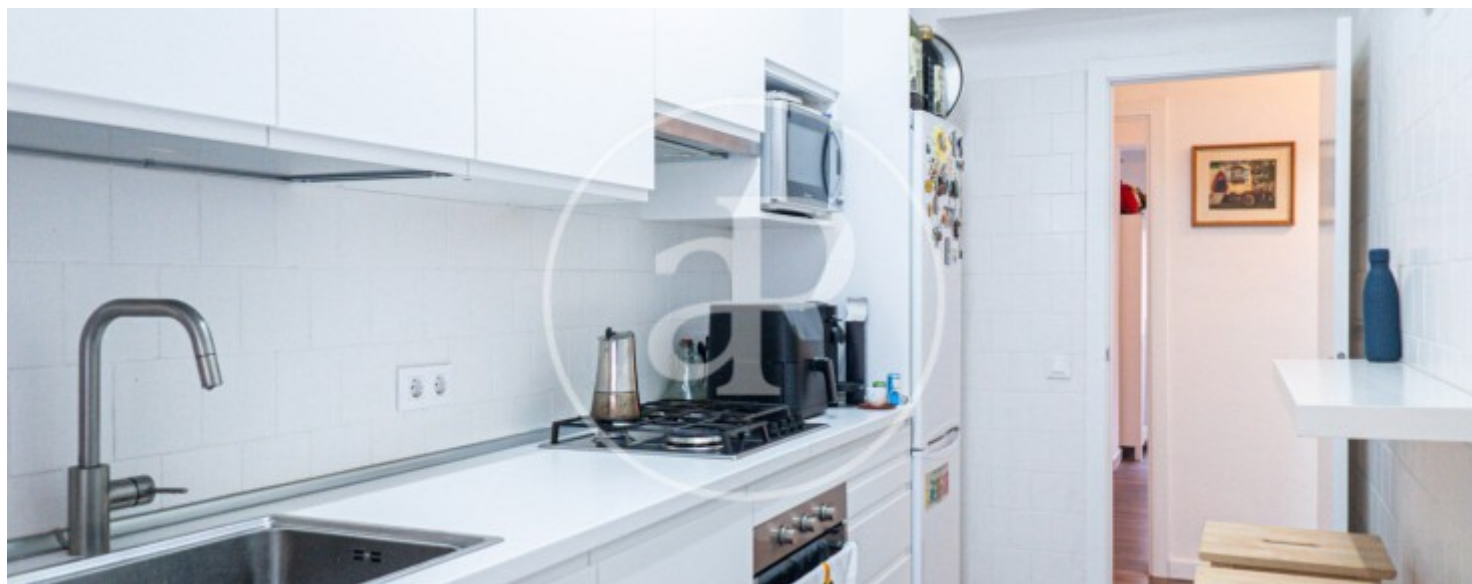
REF. VPM2401015





Arxiduc Lluís Salvador , Palma de Mallorca

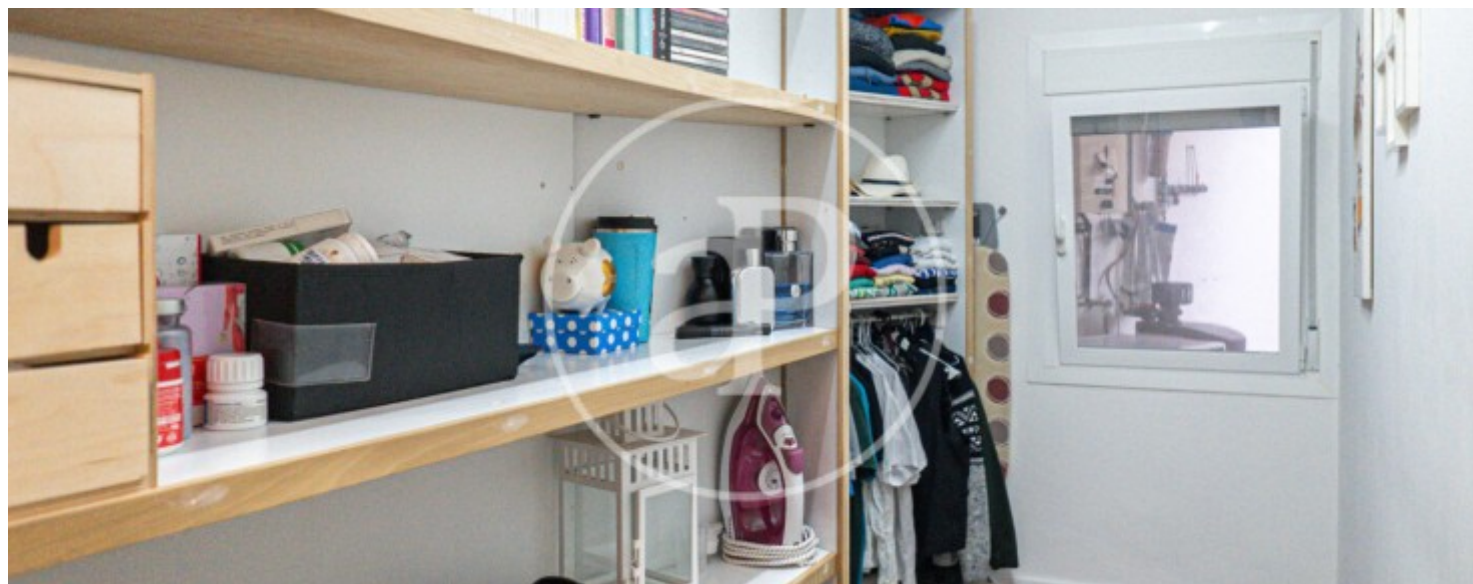
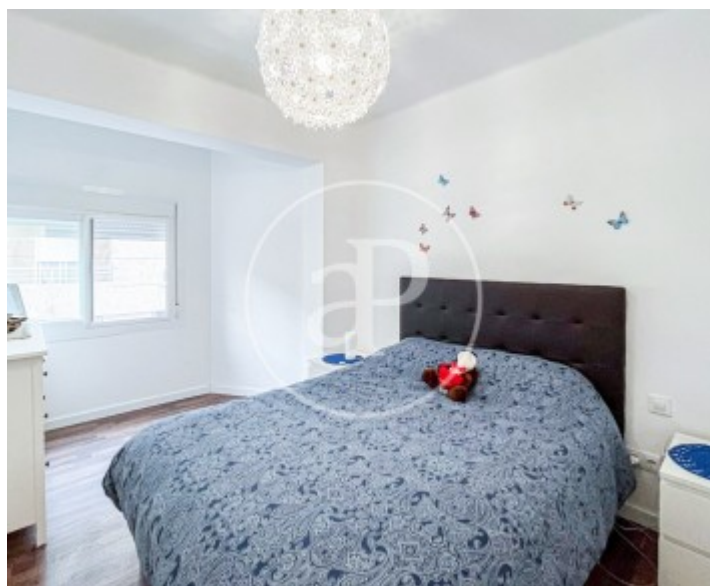
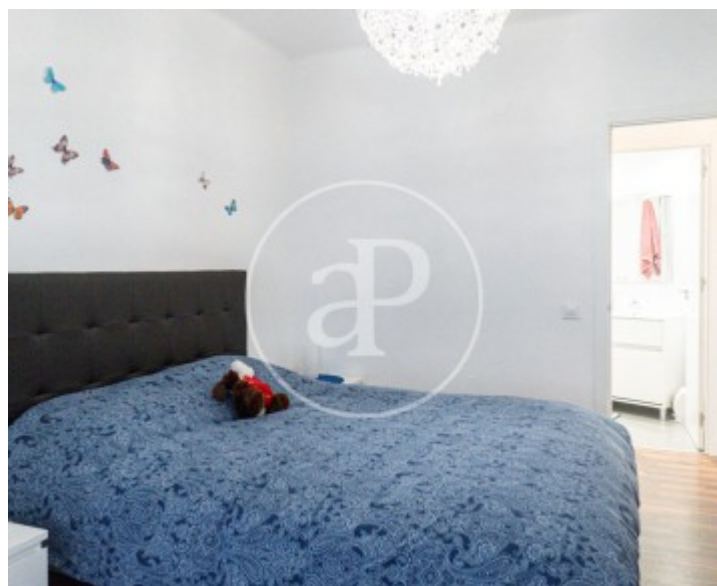
REF. VPM2401015





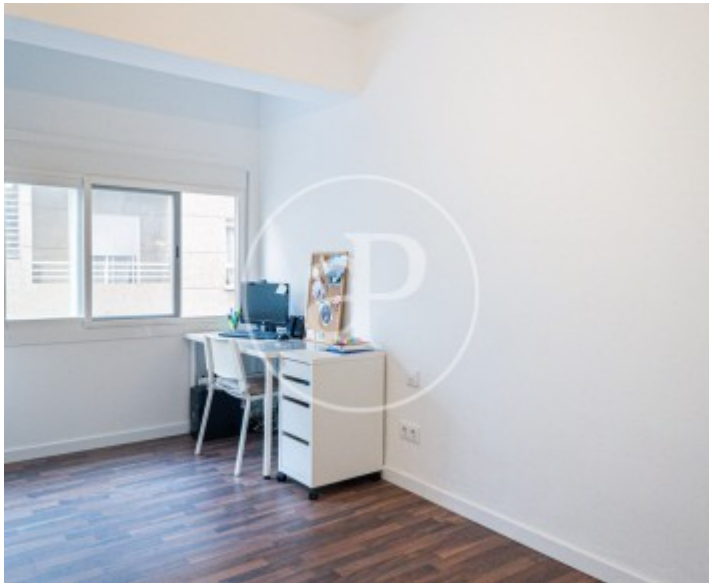
Arxiduc Lluís Salvador , Palma de Mallorca

REF. VPM2401015



Arxiduc Lluís Salvador , Palma de Mallorca

REF. VPM2401015



The information about any property is not binding to any offer or contract. Any verbal or written declaration made by aProperties with regards to the value or condition of the property should not be considered accurate or factual. The pictures make reference to some parts of the property at the times that they were taken. The areas, dimensions and distances that are given are approximate and should be checked by the client. The images are computer generated and are just an approximate indication of the real appearance of the property; these may change at any time. The information with regards to the property may also change at any time.



For **more information** or  
to make an appointment

[apropertiespalma@aproperties.es](mailto:apropertiespalma@aproperties.es)  
Tel: 871 16 01 60  
[www.aproperties.es](http://www.aproperties.es)