



Arxiduc Lluís Salvador , Palma de Mallorca

REF. VPM2511023

# Apartment for Sale in the Arxiduc Area

## Features

- ✓ Terrace
- ✓ Backyard
- ✓ Has parking

Surface

**134 m<sup>2</sup>**

Bedrooms

**3**

Bathroom

**1**

Price

**520,000 €**



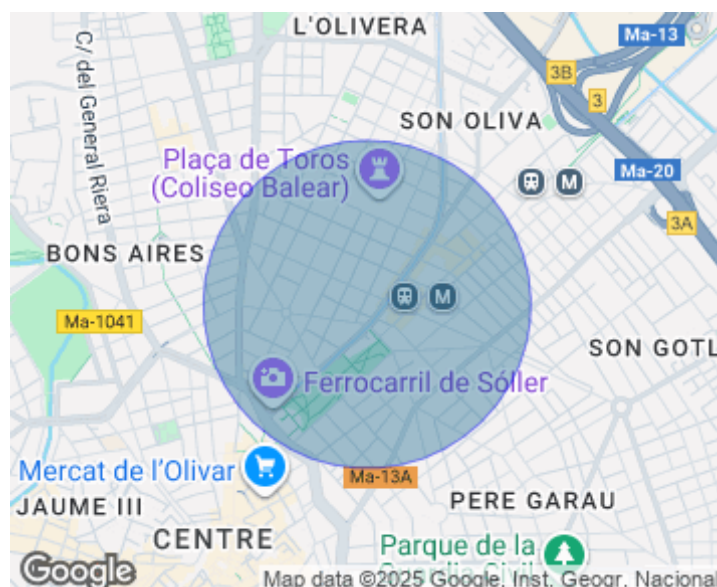
Located on Jaume Ferran Street, next to Eusebi Estada, this ground-floor apartment is in a privileged area of Palma, surrounded by shops, close to schools, and excellently connected to all kinds of transport thanks to its proximity to the Plaza España Intermodal Station. The property has 140 m<sup>2</sup> built, a garage, and a sunny 30 m<sup>2</sup> patio, ideal for relaxing or enjoying outdoor meals, in a building with only two neighbors. It is currently distributed in three bedrooms —one with street-facing windows and another overlooking the landscaped patio— a living room, dining room, kitchen with access to the garden, and a bathroom located next to the kitchen. The bedrooms are interconnected, offering various possibilities for redistribution. The property requires a full renovation but

features high ceilings and a structure that makes it a true blank canvas to develop a unique and personalized architectural project. Additionally, the garage can be integrated into the apartment to further expand the usable space. Discover this unique investment opportunity. Don't miss the chance to visit it.

**Contact us,**  
we will be happy to assist you,  
to offer you more details and information.

Arxiduc Lluís Salvador , Palma de Mallorca

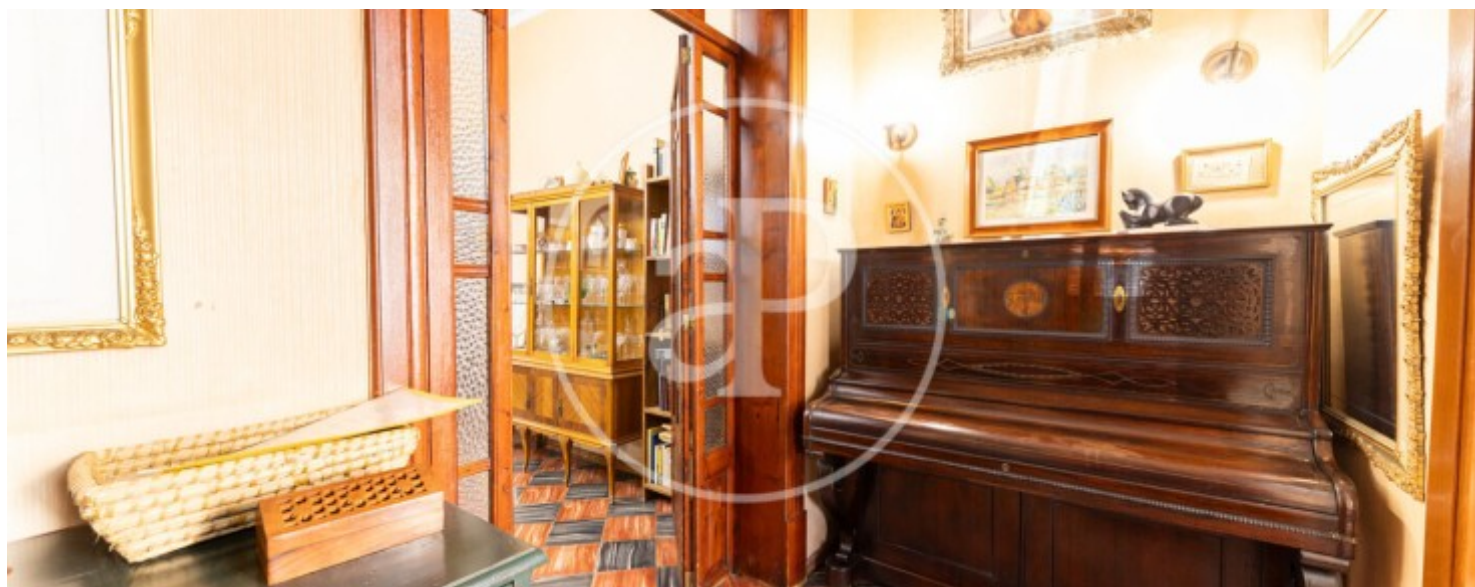
REF. VPM2511023





Arxiduc Lluís Salvador , Palma de Mallorca

REF. VPM2511023





Arxiduc Lluís Salvador , Palma de Mallorca

REF. VPM2511023





Arxiduc Lluís Salvador , Palma de Mallorca

REF. VPM2511023



The information about any property is not binding to any offer or contract. Any verbal or written declaration made by aProperties with regards to the value or condition of the property should not be considered accurate or factual. The pictures make reference to some parts of the property at the times that they were taken. The areas, dimensions and distances that are given are approximate and should be checked by the client. The images are computer generated and are just an approximate indication of the real appearance of the property; these may change at any time. The information with regards to the property may also change at any time.

For **more information** or  
to make an appointment

[apropertiespalma@aproperties.es](mailto:apropertiespalma@aproperties.es)  
Tel: 871 16 01 60  
[www.aproperties.es](http://www.aproperties.es)