

(Aragó)

Ref: ONPM2205002



## *New development in Palma City.*

Promotion of 6 new homes in carrer aragó. An exceptional area, very close to the center and connected to the commercial network of the city. It has services to malls, pharmacies, medical centers, parks, schools, buses, subway. The promotion has great collaborators such as Porcelanosa that gives great quality to the promotion. The homes have 2 bedrooms with 2 bathrooms with an intelligent distribution, taking advantage of all the meters. It has a common relaxation area, communal area with solarium and jacuzzi. Great investment! A unique project whose design and location make this building a great investment opportunity in one of the most mythical corners of Palma. the memory of qualities include, Aluminum exterior carpentry. Glazing with double glazing and air chamber type "climalit" or similar. Aluminum roller shutter in all the façade openings. Interior doors: solid smooth white lacquered finish, equipped with rubber gasket and stainless steel hardware design. Residential entrance doors: solid smooth, armored leaf, white lacquered finish. Three-point security lock, handle and optical peephole. COMMON AREA POOL Non-slip stoneware flooring, panoramic swimm [...]

Palma de Mallorca / Aragón

Surface  
84 m² - 84 m²  
Units  
3  
Completion  
Q1 2024

- ✓ Heating
- ✓ AACC
- ✓ Terrace
- ✓ Lift
- ✓ Has parking

Price from 390,000 €



(Aragó)

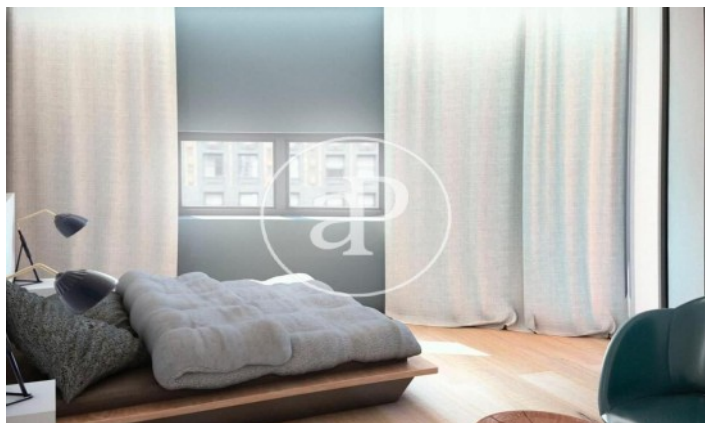
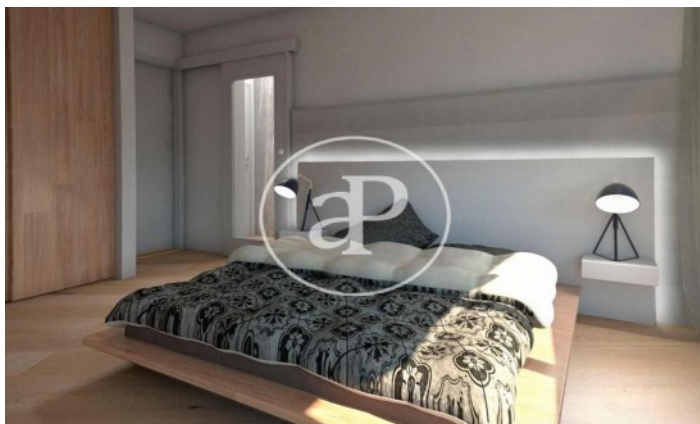
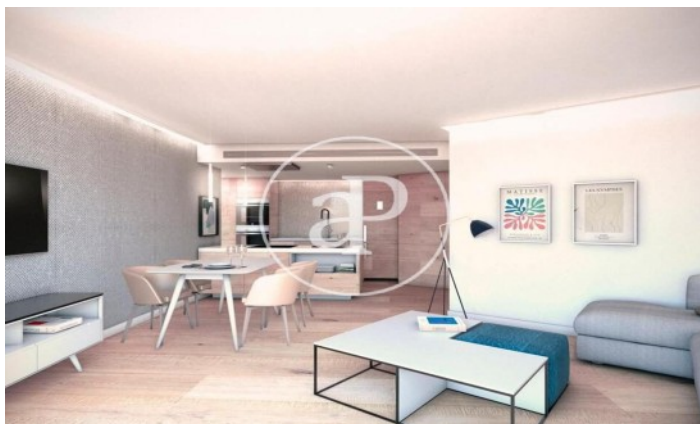
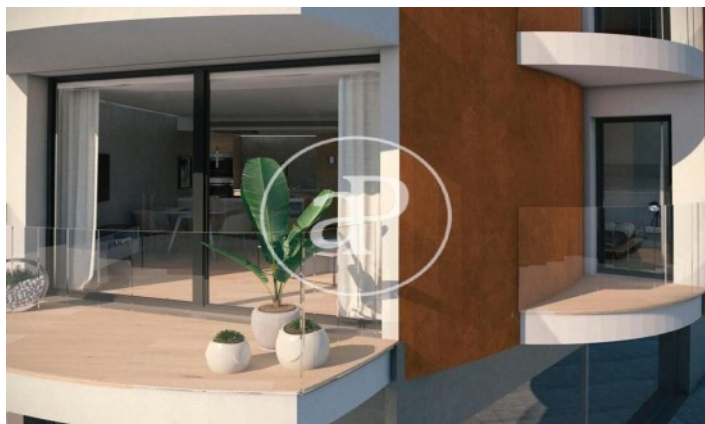
Ref: ONPM2205002

### Units in this development

Type	Surface	Terrace	Bedrooms	Bathrooms	Price	State
Flat	84 m <sup>2</sup>	1 ( 3.65 m <sup>2</sup> )	2	2	€ 390,000	Available
Flat	84 m <sup>2</sup>	-	2	2	€ 400,000	Available
Flat	84 m <sup>2</sup>	1 ( 3.65 m <sup>2</sup> )	2	2	€ 410,000	Available

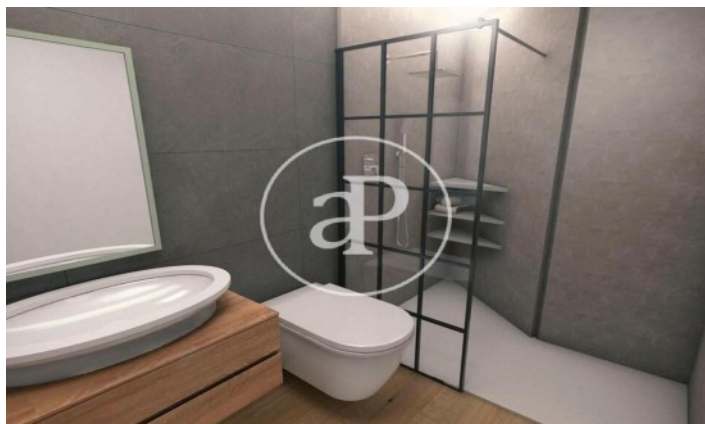
(Aragó)

Ref: ONPM2205002



(Aragó)

Ref: ONPM2205002



The information about any property is not binding to any offer or contract. Any verbal or written declaration made by aProperties with regards to the value or condition of the property should not be considered accurate or factual. The pictures make reference to some parts of the property at the times that they were taken. The areas, dimensions and distances that are given are approximate and should be checked by the client. The images are computer generated and are just an approximate indication of the real appearance of the property; these may change at any time. The information with regards to the property may also change at any time.

Contact us today for more information or to arrange a viewing

Tel: 871 16 01 60

[apropertiespalma@aproperties.es](mailto:apropertiespalma@aproperties.es)

<https://www.aproperties.es>