

Amanecer - S'Olivera, Palma de Mallorca

REF. VPM2211041

Flat for sale with terrace and unobstructed views in S'Olivera

Features

- ✓ Views
- ✓ Heating
- ✓ Furnished
- ✓ Boxroom
- ✓ AACC
- ✓ Terrace
- ✓ Lift
- ✓ Has parking

Surface

83 m²

Bedrooms

3

Bathrooms

2

Price

358,000 €



Great flat in the emerging and well known area of the Conservatory - S'Olivera.

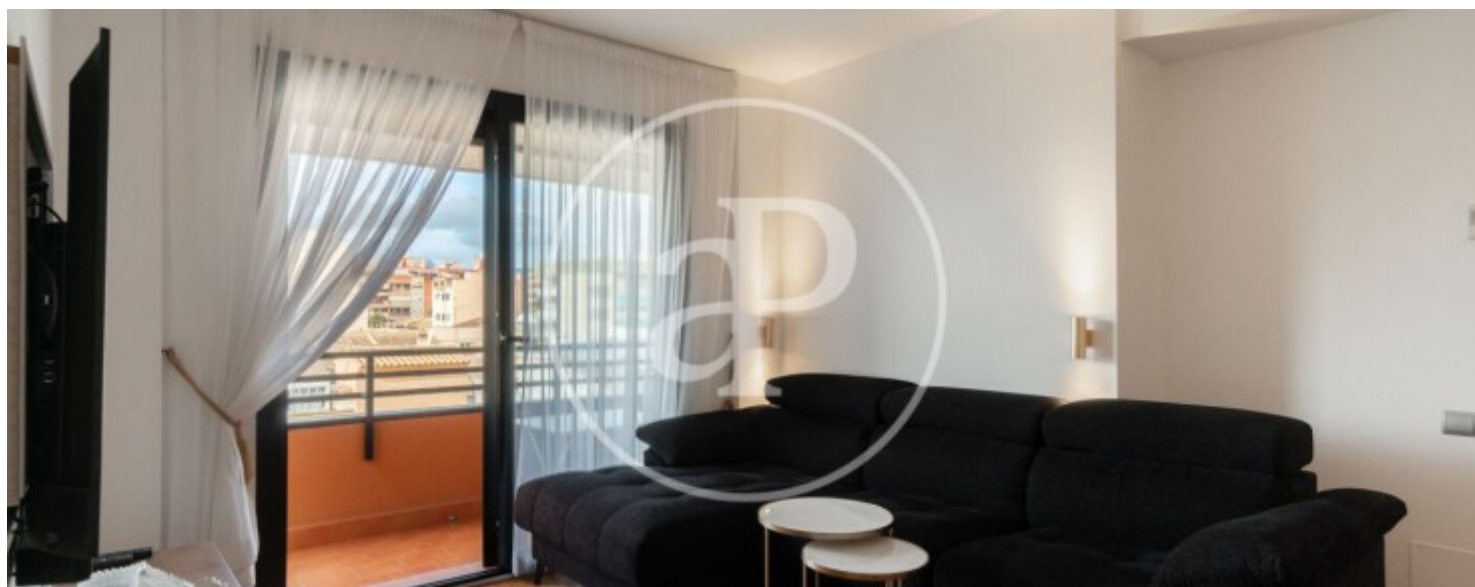
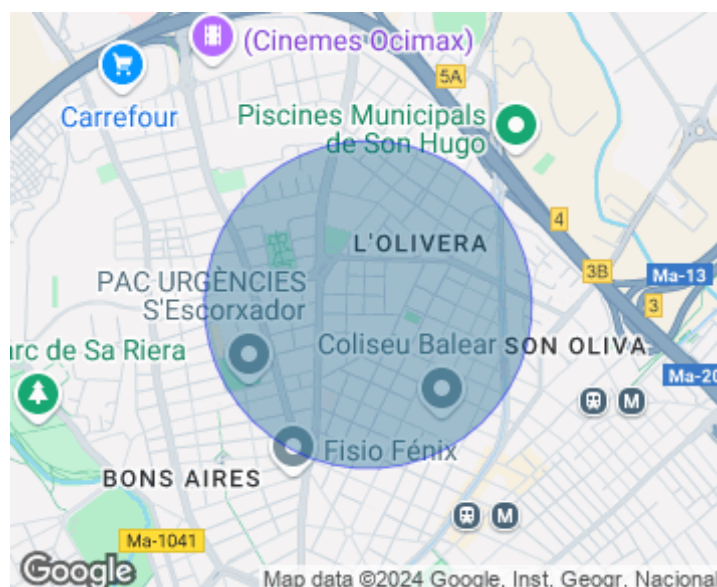
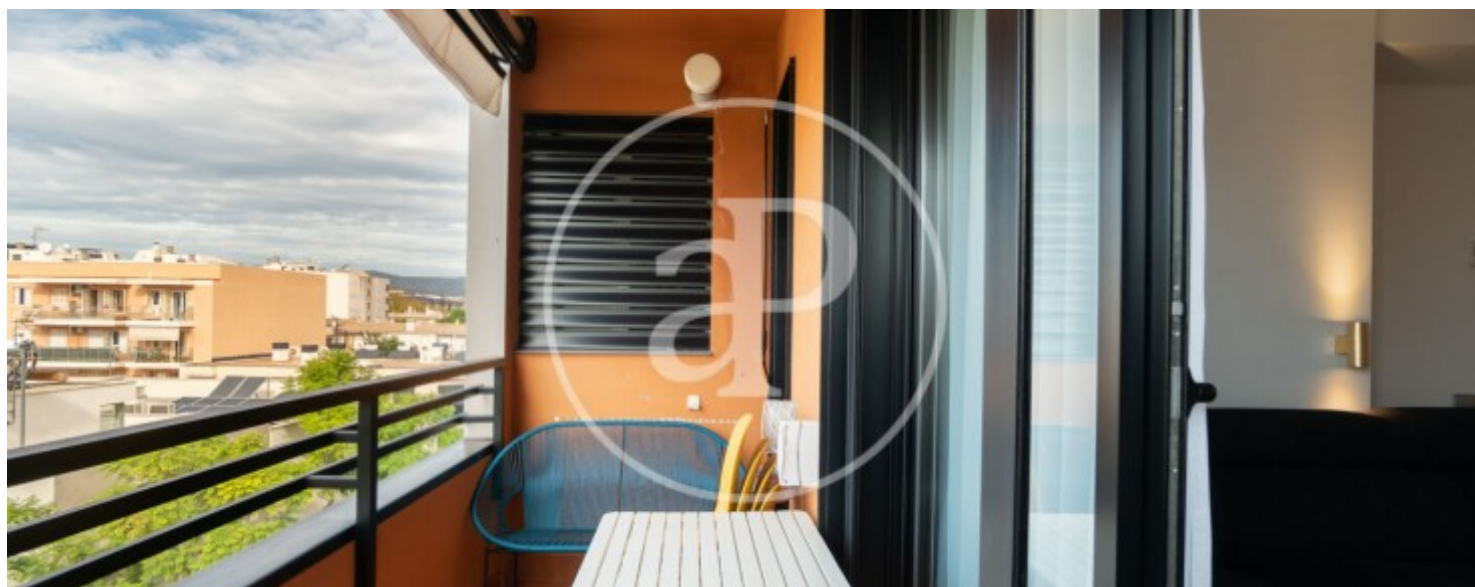
It is a third floor in a semi-new building only 11 years old. In the entrance we find a small hall that leads to the fully fitted kitchen with all its modern appliances and laundry room. Spacious living-dining room with direct access to the terrace and unobstructed views. It continues with a very good distribution towards a double bedroom and a single bedroom, complete bathroom and the master bedroom with en-suite bathroom. It is equipped with double glazed windows, parquet floors and fitted wardrobes in all rooms. Central heating and air conditioning throughout the property.

It also includes parking and storage room in the same building with direct access from the lift. It also has an original communal interior courtyard with a children's playground, ideal for children to enjoy and entertain themselves in the open air and in safety. Possibility of being sold partially or fully furnished. Very well communicated, as it is located about 15 minutes walking distance from the centre of Palma and 5 minutes by car from the motorway exit, as well as bus stop two blocks away. Can you imagine living here? Do not hesitate to contact us and...

Contact us,
we will be happy to assist you,
to offer you more details and information.

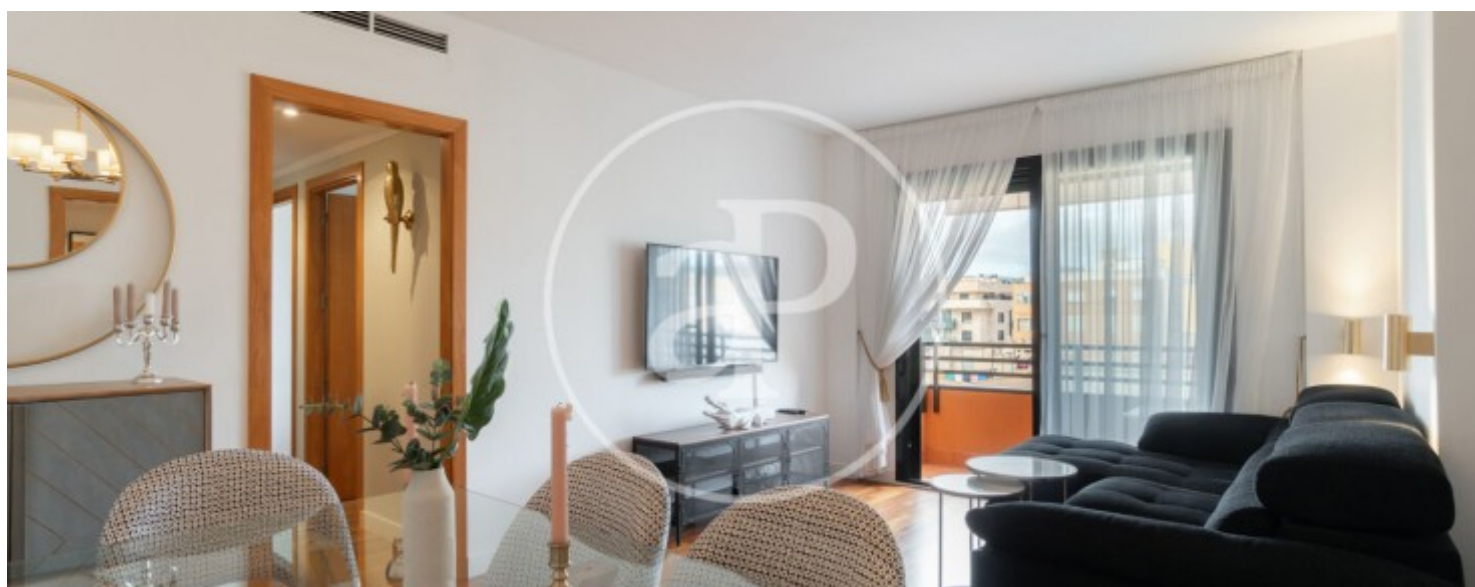
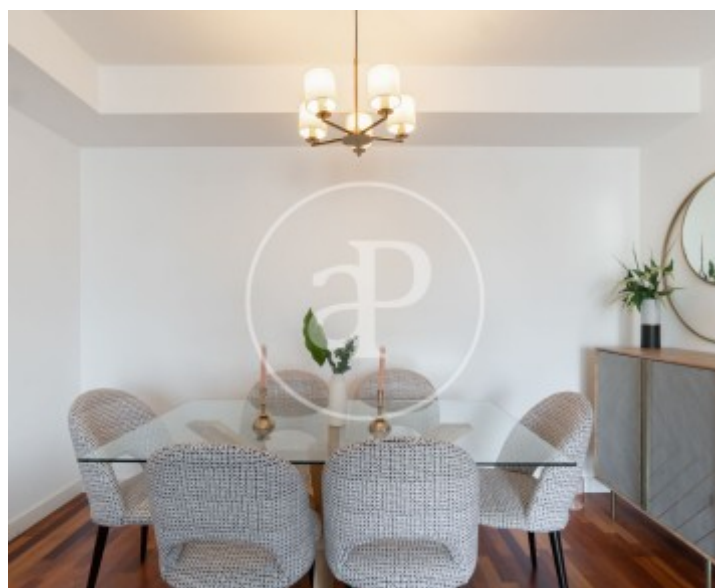
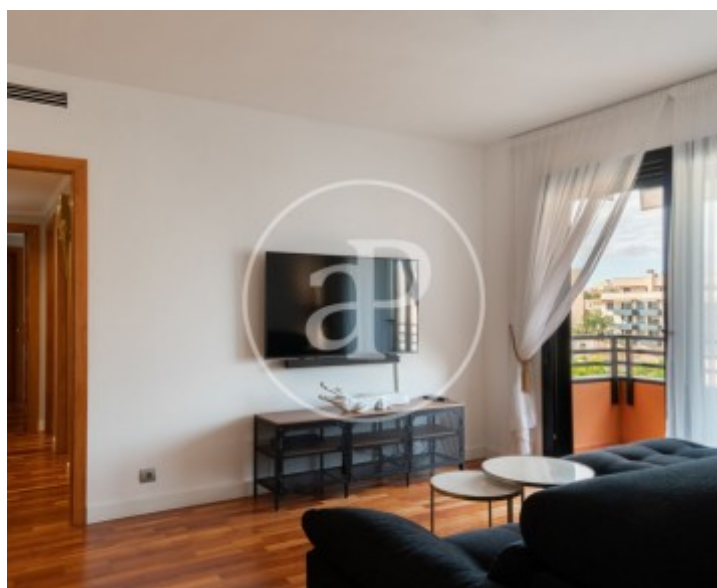
Amanecer - S'Olivera, Palma de Mallorca

REF. VPM2211041



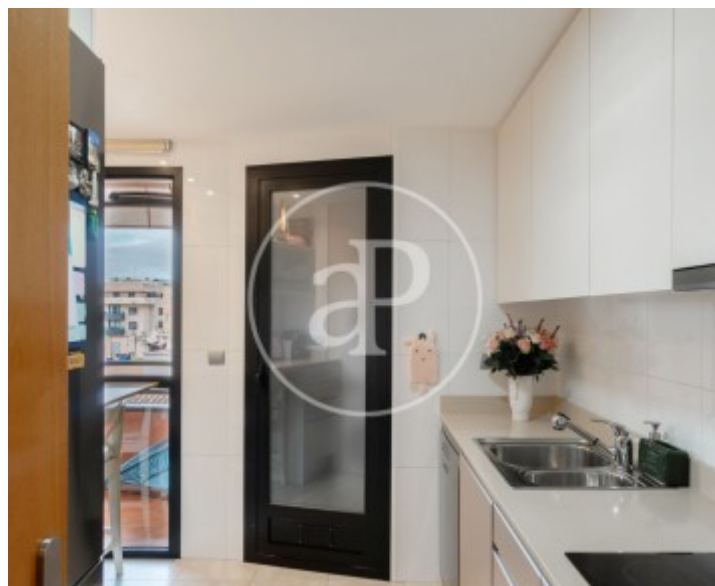
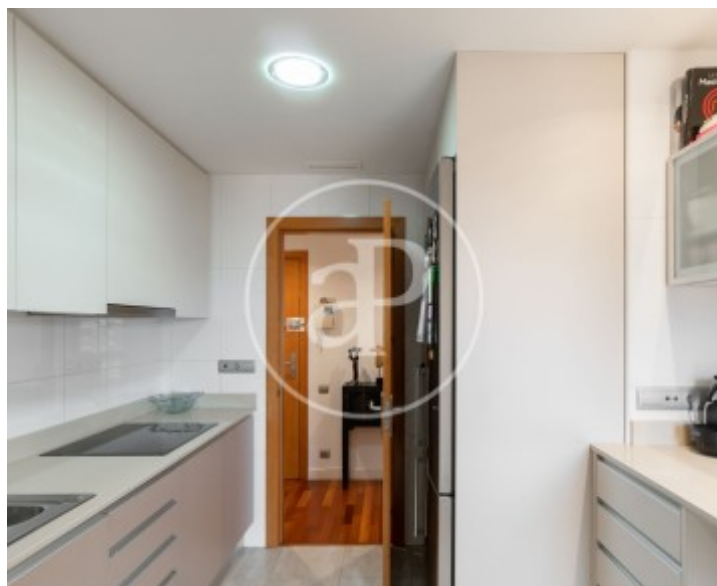
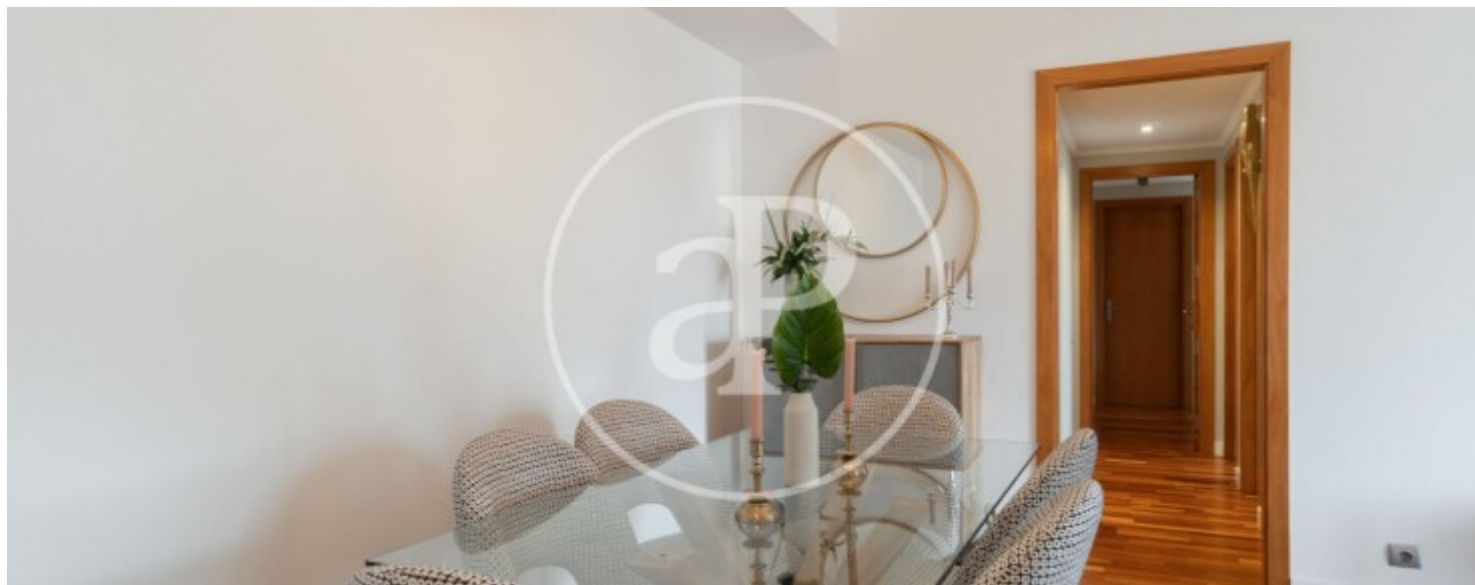
Amanecer - S'Olivera, Palma de Mallorca

REF. VPM2211041



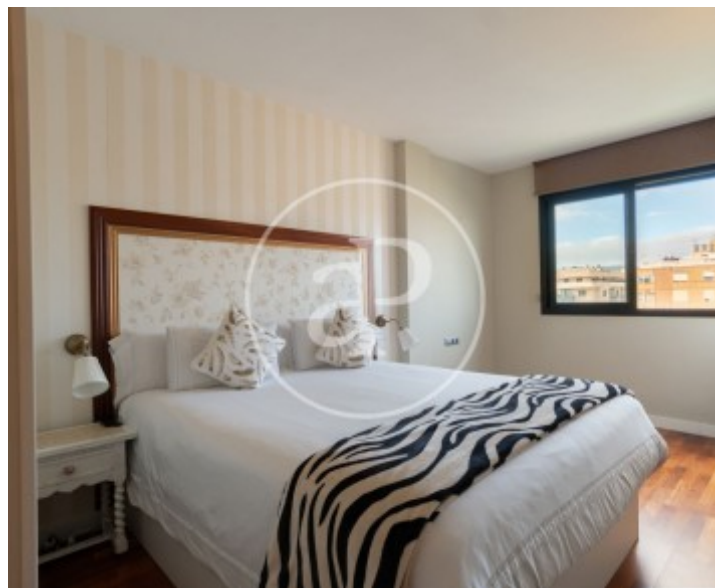
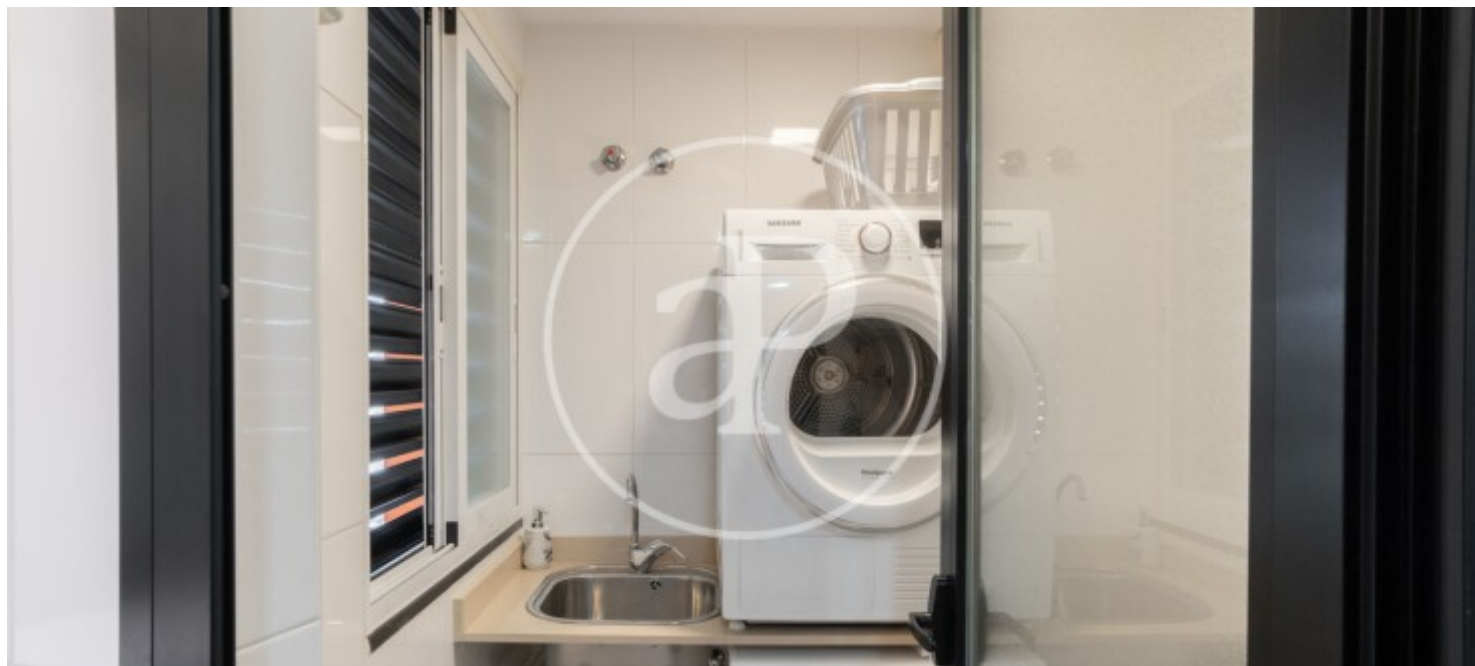
Amanecer - S'Olivera, Palma de Mallorca

REF. VPM2211041



Amanecer - S'Olivera, Palma de Mallorca

REF. VPM2211041



The information about any property is not binding to any offer or contract. Any verbal or written declaration made by aProperties with regards to the value or condition of the property should not be considered accurate or factual. The pictures make reference to some parts of the property at the times that they were taken. The areas, dimensions and distances that are given are approximate and should be checked by the client. The images are computer generated and are just an approximate indication of the real appearance of the property; these may change at any time. The information with regards to the property may also change at any time.

For **more information** or
to make an appointment

apropertiespalma@aproperties.es
Tel: 871 16 01 60
www.aproperties.es