

Palma de Mallorca

REF. APM2207002

Two-bedroom apartment for rent with parking in Jaume Balmes street

Features

- ✓ Heating
- ✓ AACC
- ✓ Lift
- ✓ Has parking

Price

1,200 €

Surface

65 m²

Bedrooms

2

Bathrooms

2



TWO BEDROOM APARTMENT WITH PARKING IN BALMES STREET Two-bedroom apartment with parking in Jaume Balmes street, in a central area of the city, surrounded by all kinds of shops, leisure centres, connected to all means of transport, we find this bright flat in a modern building. As we enter, we enter a living-dining room with access to the large balcony with views to Balmes street. From there you enter the kitchen, equipped with four burners and a gas oven. Next to the kitchen is the laundry room which looks out onto an internal courtyard. Next to the living room there is a complete bathroom with shower. The night area has two double bedrooms, one of them is external and en suite with a complete bathroom with hydro massage bathtub, both with built-in wooden wardrobes. The whole property has marble

floors and white walls, it has air conditioning in the main bedroom, the heating is by radiators system in all the rooms, the windows have double glazed windows with high soundproofing and metal shutters. Community fees and IBI included in the monthly rent. Ample parking space included. Immediate availability. Can you imagine living here?

Contact us,
we will be happy to assist you,
to offer you more details and information.

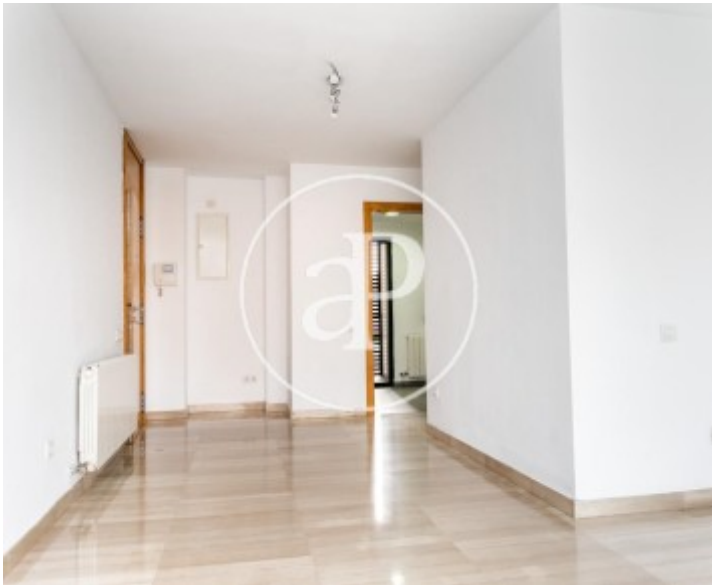
Palma de Mallorca

REF. APM2207002



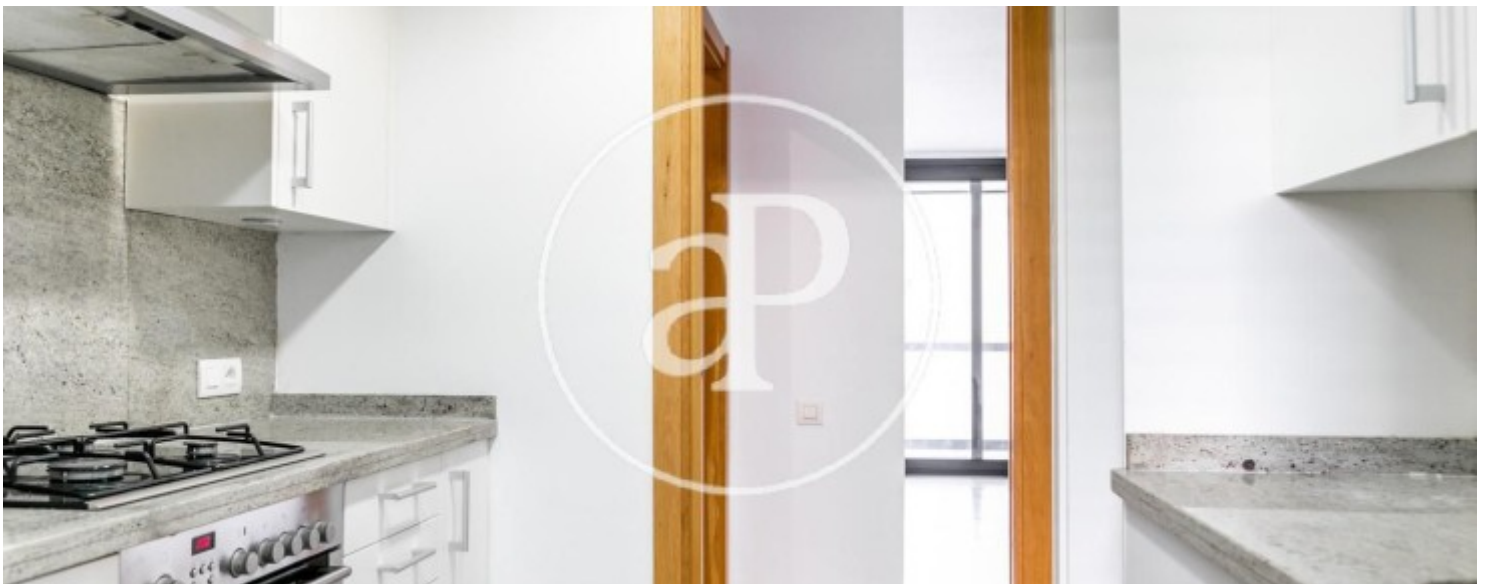
Palma de Mallorca

REF. APM2207002



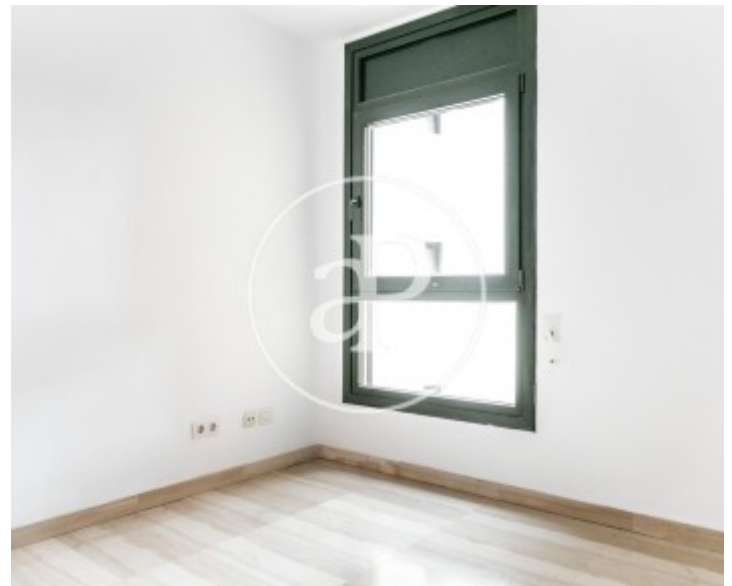
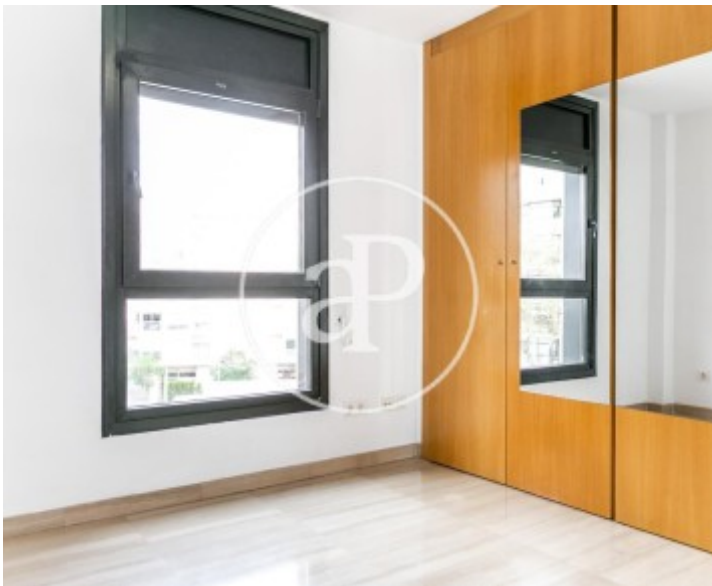
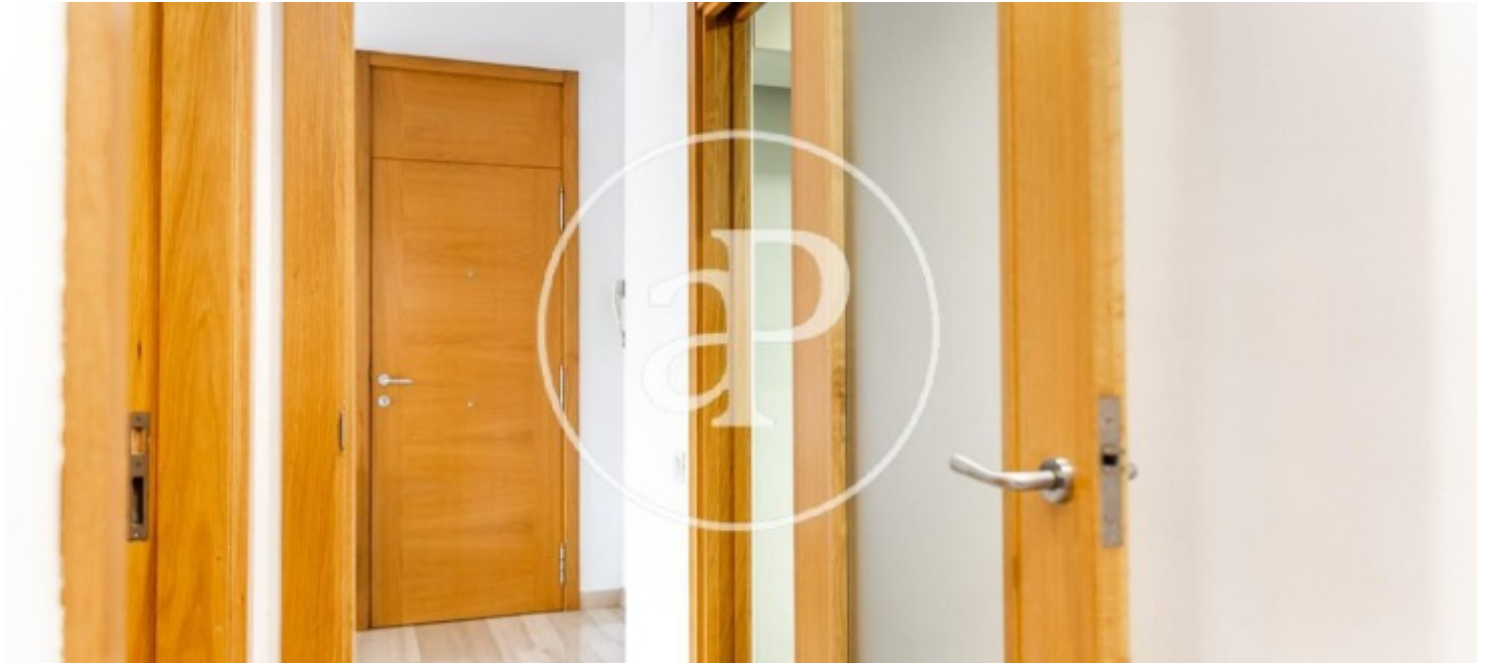
Palma de Mallorca

REF. APM2207002



Palma de Mallorca

REF. APM2207002



The information about any property is not binding to any offer or contract. Any verbal or written declaration made by aProperties with regards to the value or condition of the property should not be considered accurate or factual. The pictures make reference to some parts of the property at the times that they were taken. The areas, dimensions and distances that are given are approximate and should be checked by the client. The images are computer generated and are just an approximate indication of the real appearance of the property; these may change at any time. The information with regards to the property may also change at any time.

For **more information** or
to make an appointment

apropertiespalma@aproperties.es
Tel: 871 16 01 60
www.aproperties.es