

Palma de Cervelló

REF. VB2309032

House for sale in la Palma de Cervelló

Features

- ✓ Views
- ✓ Heating
- ✓ Boxroom
- ✓ AACC
- ✓ Backyard
- ✓ Pool
- ✓ Has parking

Surface

259 m²

Plot surface

1,743 m²

Bedrooms

6

Bathrooms

4



Price

900,000 €

House of perfect dimensions, structure and design in La Palma de Cervelló, very close to Barcelona.

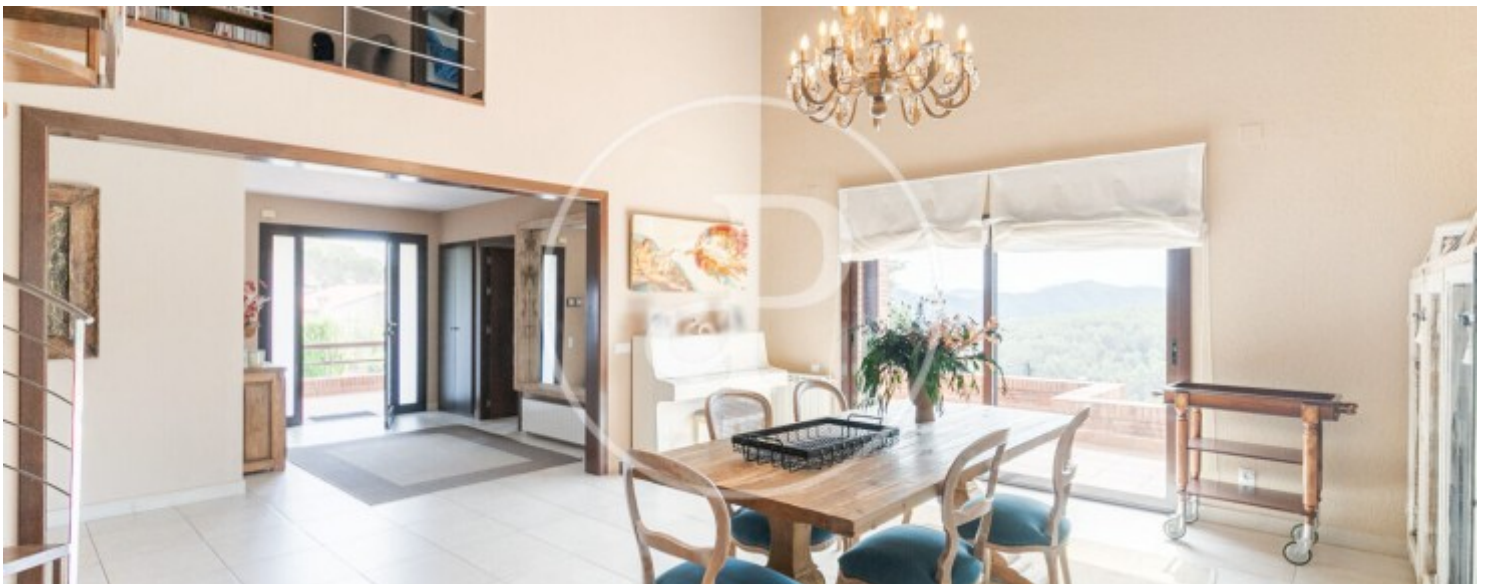
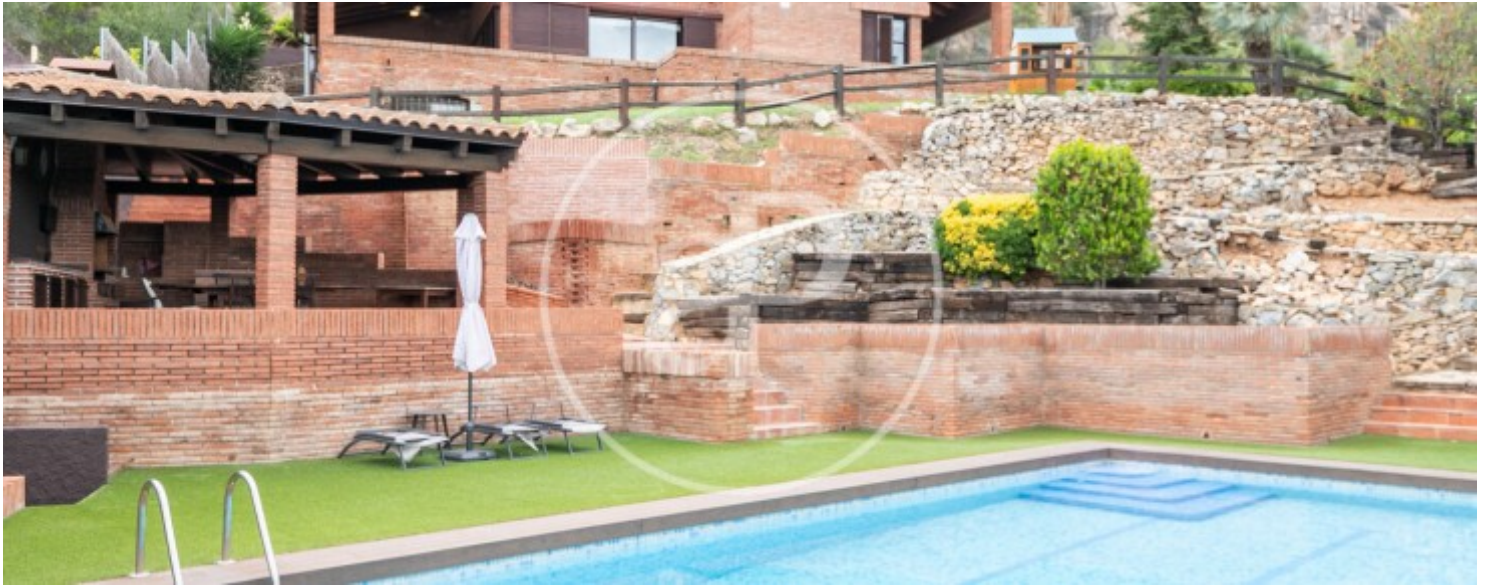
The house has a plot area of 1743 meters and 627 meters built, of which 259 meters correspond to the house. It is a perfect property for all nature lovers, who like unobstructed views, silence and tranquility; however, its proximity to Barcelona and its good communication by road, make that in 20 minutes we reach the city, which is why it is for the demanding who want everything. The house has harmony in its design and the wide spaces and views, makes it a perfect place to live and enjoy. The house has a first floor destined to garage area with capacity for two

cars or more inside and the possibility of leaving several cars in the outdoor area. On the same floor there is a multipurpose space used as a games room, where you can play, listen and play music, eat. It is a charming corner, an endearing bar that can be adapted to the leisure and tastes of the inhabitants. On this floor and with an access that leads to the pool we find the bathroom, so it is not necessary to climb inside the house. The second floor has a room, perfect as an office, bedroom, etc., a living room with fireplace several environments and a large kitchen, with beautiful views....

Contact us,
we will be happy to assist you,
to offer you more details and information.

Palma de Cervelló

REF. VB2309032



Palma de Cervelló

REF. VB2309032



Palma de Cervelló

REF. VB2309032



Palma de Cervelló

REF. VB2309032



The information about any property is not binding to any offer or contract. Any verbal or written declaration made by aProperties with regards to the value or condition of the property should not be considered accurate or factual. The pictures make reference to some parts of the property at the times that they were taken. The areas, dimensions and distances that are given are approximate and should be checked by the client. The images are computer generated and are just an approximate indication of the real appearance of the property; these may change at any time. The information with regards to the property may also change at any time.

For **more information** or
to make an appointment

apropertiesbarcelona@aproperties.es
Tel: 93 528 89 08
www.aproperties.es