

(Oliva)

Ref: ONV2205004



## *New building for sale with Terrace in Oliva*

Magnificent new homes where you can enjoy a myriad of services and qualities. The residential consists of 2 buildings, located a few meters from the sea and just in front of the Equestrian Center of Oliva Nova. Where you will enjoy the magnificent shows that the MET (Mediterranean Equestrian Tour) gives us year after year. OCEAN'S can also boast enviable common areas, such as a huge swimming pool with garden. The OCEAN'S residential complex will not leave indifferent even the most demanding, the quality of the highest level finishes from the hand of Porcelanosa and the guarantees provided by CHG make the perfect combination to make your future home the one you always dreamed of. Homes with two or three bedrooms, penthouses with swimming pool and first floor with garden. With access to all the services of Oliva Nova Beach & Golf Resort \*\*\*\*\*. Our luxury resort is located in a privileged enclave where the sun, the sea and the mountains come together to discover a different way of life. Everything in Oliva Nova Beach & Golf Resort is designed to achieve a complete sport practice. We offer an 18-hole golf course designed by Severiano Ballesteros, tennis and paddle tennis co [...]

Oliva

Unit 3 303

Completion Q3 2023

### **FEATURES**

Surface 120 m<sup>2</sup> / 16 m<sup>2</sup> terrace

2 Rooms

2 Toilets

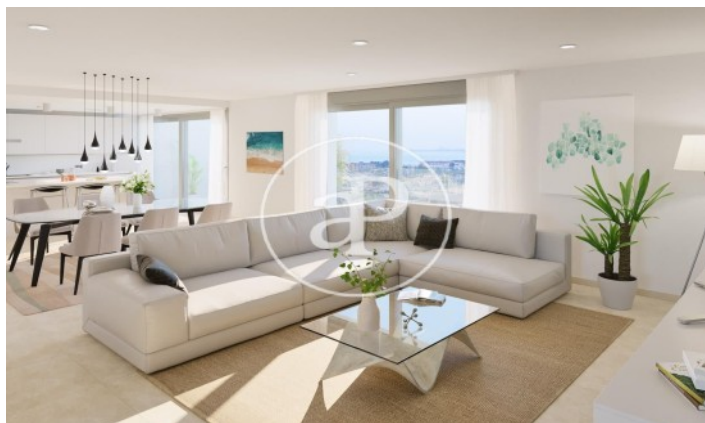
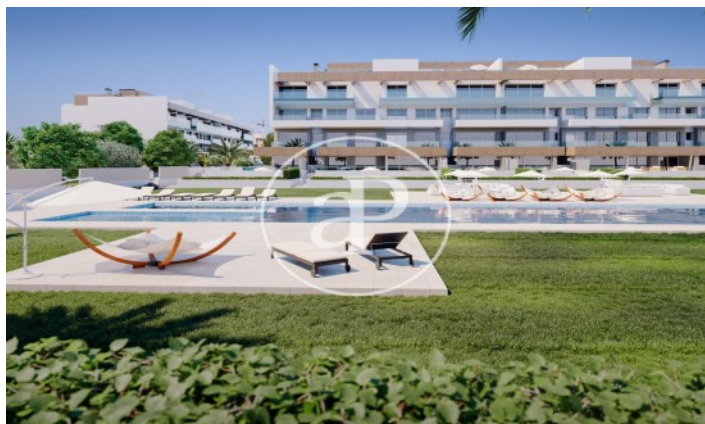
- ✓ Views
- ✓ Boxroom
- ✓ AACC
- ✓ Terrace
- ✓ Backyard
- ✓ Pool
- ✓ Lift
- ✓ Has parking

Price 362,725 €



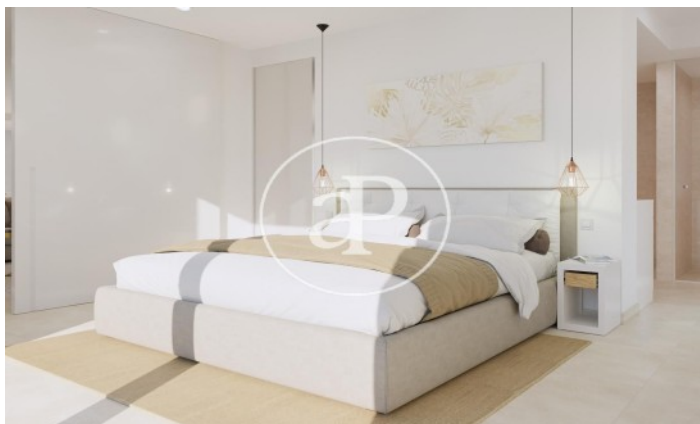
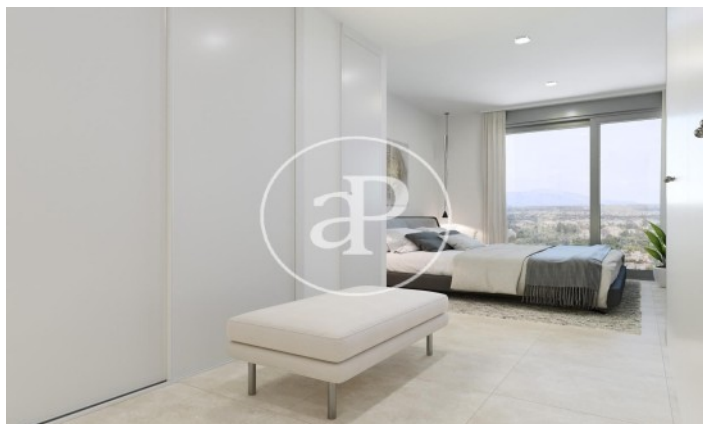
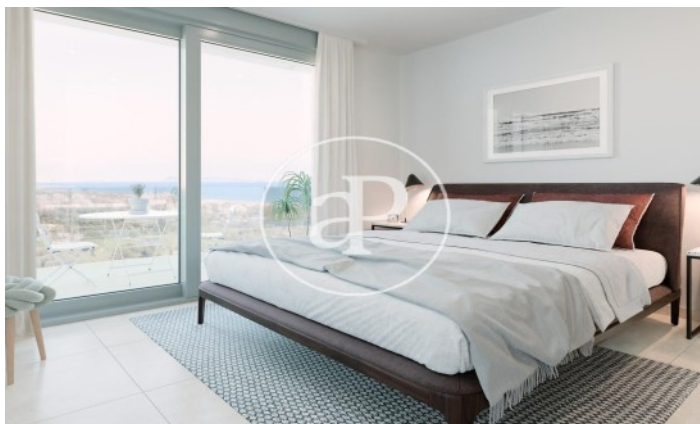
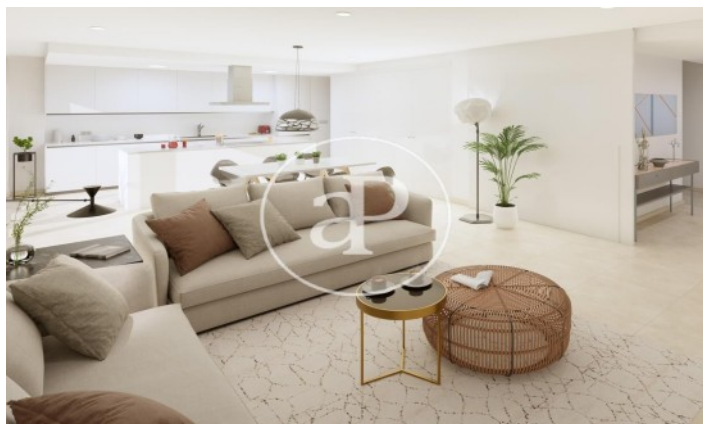
(Oliva)

Ref: ONV2205004



(Oliva)

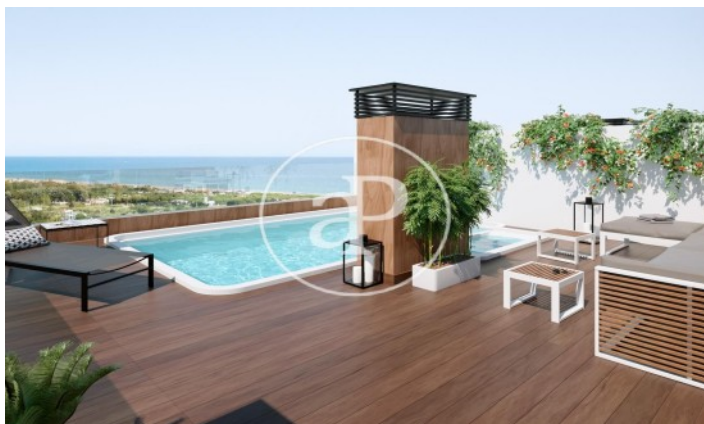
Ref: ONV2205004





(Oliva)

Ref: ONV2205004



The information about any property is not binding to any offer or contract. Any verbal or written declaration made by aProperties with regards to the value or condition of the property should not be considered accurate or factual. The pictures make reference to some parts of the property at the times that they were taken. The areas, dimensions and distances that are given are approximate and should be checked by the client. The images are computer generated and are just an approximate indication of the real appearance of the property; these may change at any time. The information with regards to the property may also change at any time.

Contact us today for more information or to arrange a viewing

Tel: 96 128 59 65

[apropertiesvalencia@aproperties.es](mailto:apropertiesvalencia@aproperties.es)

<https://www.aproperties.es>