

Náquera

REF. VV2606009

House for sale with Terrace in Náquera

Features

- ✓ Views
- ✓ AACC
- ✓ Pool
- ✓ Has parking
- ✓ Boxroom
- ✓ Terrace
- ✓ Gym

Price

1,450,000 €

Surface

631 m²

Plot surface

1,030 m²

Bedrooms

5

Bathrooms

3



aProperties is proud to present this stunning residence, where architecture and nature exist in perfect harmony.

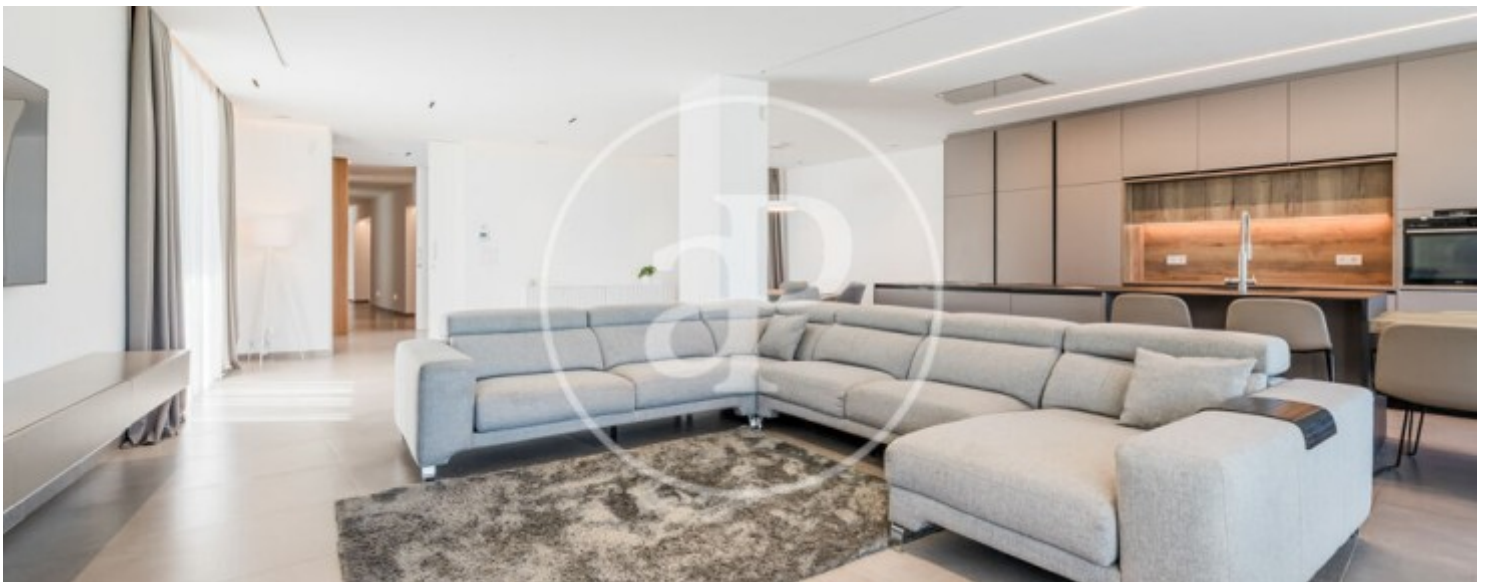
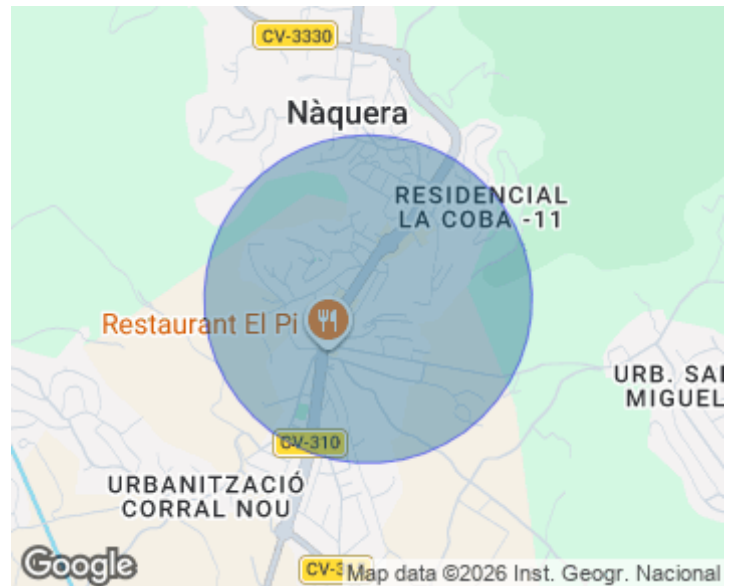
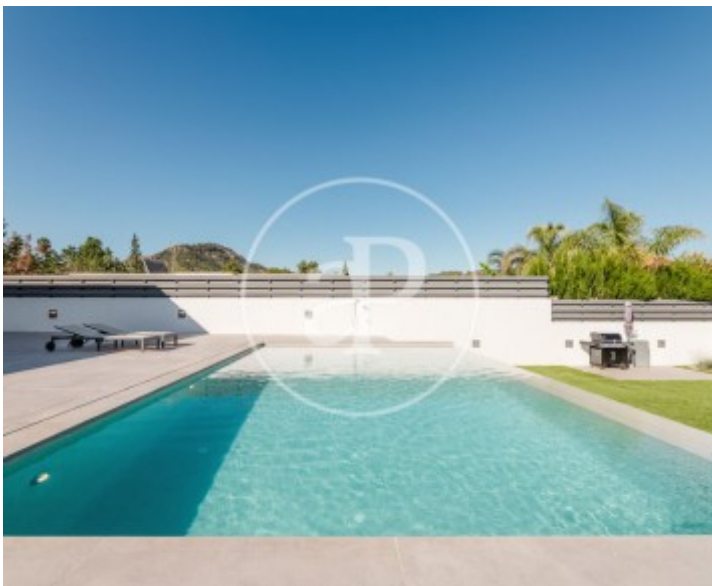
Nestled in a privileged enclave of Náquera, at the gateway to the Sierra Calderona Natural Park, this extraordinary contemporary villa has been designed for those who value privacy, design, and an exceptional quality of life. Offering 588 m² of built area on a 1,030 m² plot, the property blends elegantly into its surroundings, enjoying uninterrupted open views of the natural landscape thanks to its position facing protected rustic land. A rare privilege that guarantees natural light, visual openness, and absolute tranquillity. The home

stands out for its clean architectural lines, generous proportions, and carefully selected materials that convey both sophistication and warmth. Expansive floor-to-ceiling windows connect every room with the outdoors, flooding the interiors with natural light and creating a constant sense of space and well-being. At the heart of the property lies a spectacular open-plan living area, where the lounge, dining room, and kitchen coexist in perfect harmony alongside an elegant bioethanol fireplace and with direct access to the swimming pool and outdoor terraces. Every space has been designed to...

Contact us,
we will be happy to assist you,
to offer you more details and information.

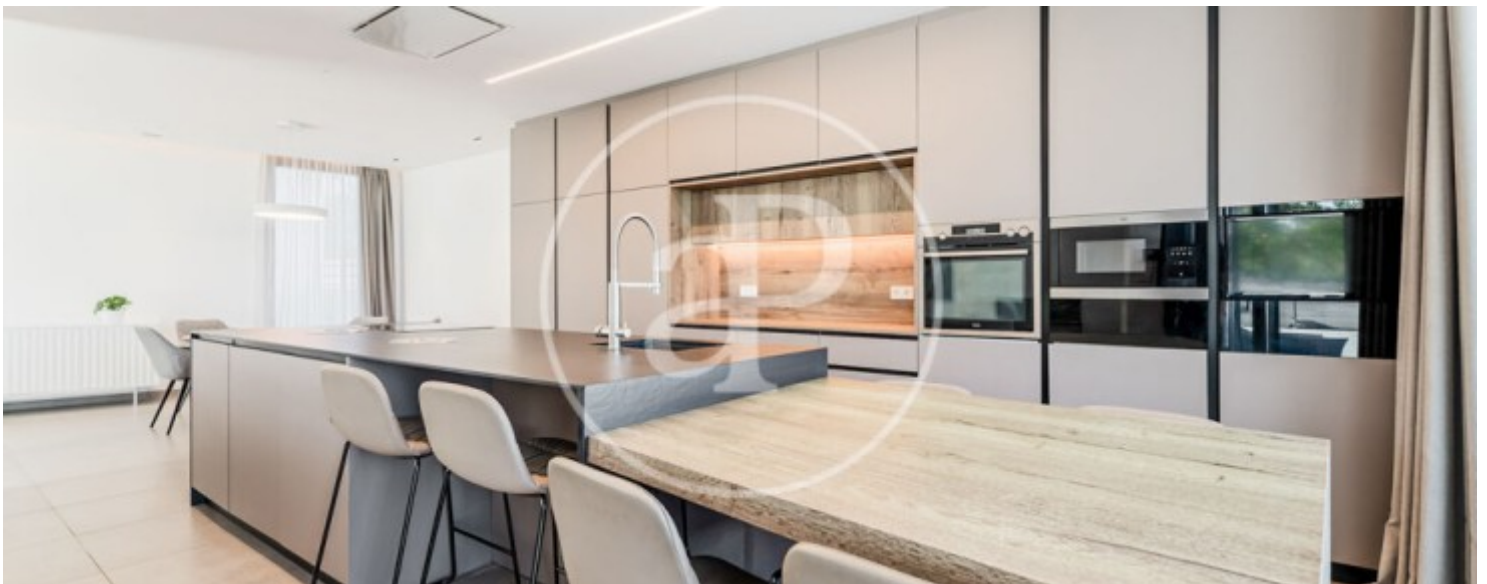
Nàquera

REF. VV2606009



Náquera

REF. VV2606009



Náquera

REF. VV2606009



Náquera

REF. VV2606009



The information about any property is not binding to any offer or contract. Any verbal or written declaration made by aProperties with regards to the value or condition of the property should not be considered accurate or factual. The pictures make reference to some parts of the property at the times that they were taken. The areas, dimensions and distances that are given are approximate and should be checked by the client. The images are computer generated and are just an approximate indication of the real appearance of the property; these may change at any time. The information with regards to the property may also change at any time.

For **more information** or
to make an appointment

apropertiesvalencia@aproperties.es
Tel: 96 128 59 65
www.aproperties.es