

Molins de Rei

REF. VB2103041

Cataloged house for sale in Molins de Rei

Features

- ✓ Views
- ✓ Heating
- ✓ Boxroom
- ✓ Terrace
- ✓ Backyard
- ✓ Lift
- ✓ Has parking

Surface

629 m²

Plot surface

5,525 m²

Bedrooms

9

Bathrooms

6

Price

1,500,000 €



Magnificent cataloged house of 629m² built according to cadastre and a plot of 5525m² located in one of the best areas of Molins de Rei with incredible views of the town and the mountains.

The house is totally exterior, at 4 winds, and with impressive 360° views. Original floors and carpentry have been maintained. The house is currently divided into a storage area and common room located on the ground floor and three individual homes. The house is adapted and has an elevator that reaches each of the houses. **GROUND FLOOR** of 183m² built in which we find a kitchen open to a large living room, study area and gym, a courtesy toilet, storage room and a gas boiler

room. **FIRST FLOOR** of 198m² built in which we find a house with a large hall, independent kitchen, formal dining room, office, living room, informal living room, two double bedrooms and 5-piece bathroom. **SECOND FLOOR** OF 183m² built distributed as follows: hall, independent kitchen, large living room, 4 double bedrooms and 2 complete bathrooms, 30m² terrace facing Tarragona. In the living-dining room there is a loft where the library is located. **THIRD FLOOR** OF 65m² built distributed in different floors, distributed as follows: large hall, open living room, semi-independent kitchen, two double...

Contact us,
we will be happy to assist you,
to offer you more details and information.

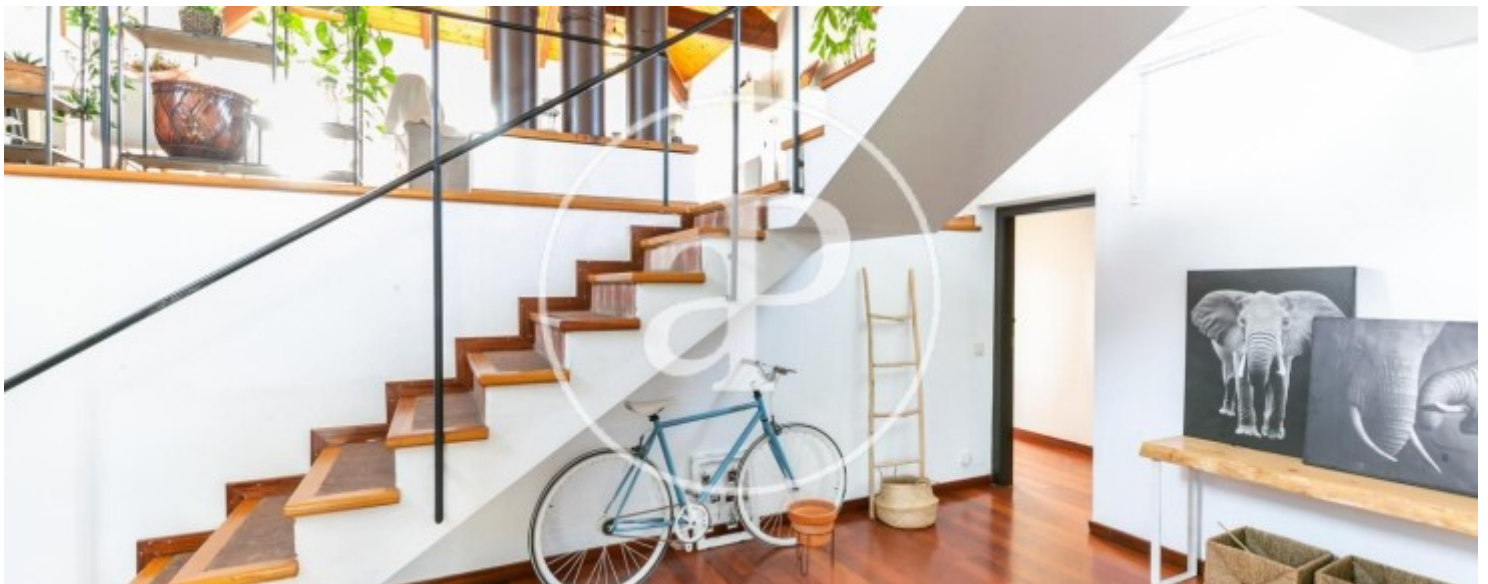
Molins de Rei

REF. VB2103041



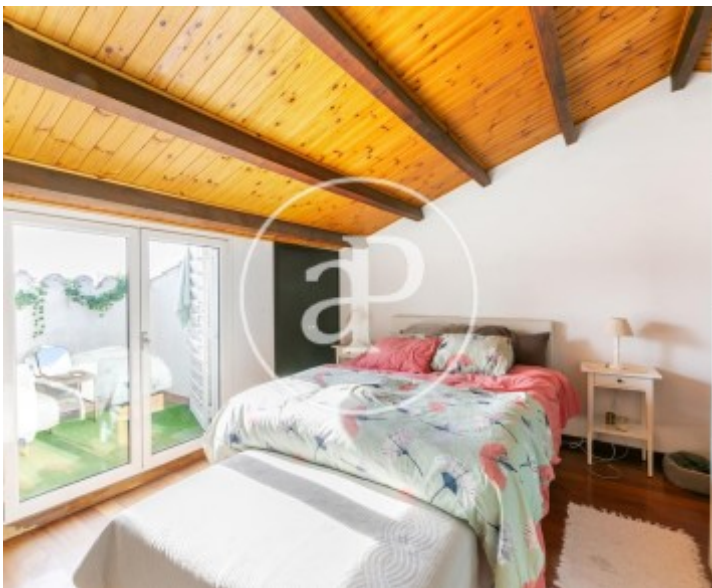
Molins de Rei

REF. VB2103041



Molins de Rei

REF. VB2103041



Molins de Rei

REF. VB2103041



The information about any property is not binding to any offer or contract. Any verbal or written declaration made by aProperties with regards to the value or condition of the property should not be considered accurate or factual. The pictures make reference to some parts of the property at the times that they were taken. The areas, dimensions and distances that are given are approximate and should be checked by the client. The images are computer generated and are just an approximate indication of the real appearance of the property; these may change at any time. The information with regards to the property may also change at any time.

For **more information** or
to make an appointment

apropertiesbarcelona@aproperties.es
Tel: 93 528 89 08
www.aproperties.es